

Product datasheet for **RC214925**

GIT2 (NM_014776) Human Tagged ORF Clone

Product data:

Product Type:	Expression Plasmids
Product Name:	GIT2 (NM_014776) Human Tagged ORF Clone
Tag:	Myc-DDK
Symbol:	GIT2
Synonyms:	CAT-2; CAT2; PKL
Mammalian Cell Selection:	Neomycin
Vector:	pCMV6-Entry (PS100001)
E. coli Selection:	Kanamycin (25 ug/mL)



[View online »](#)

ORF Nucleotide Sequence:

>RC214925 representing NM_014776
 Red=Cloning site Blue=ORF Green=Tags(s)

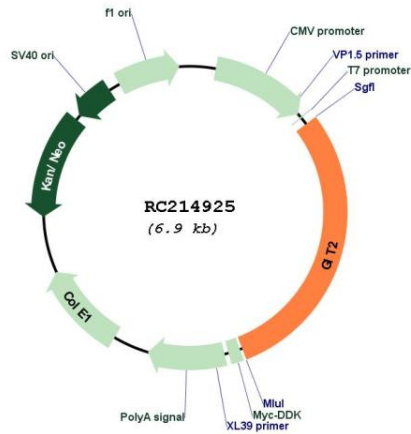
TTTTGTAATACGACTCACTATAGGGCGGCCGGGAATTCGTCGACTGGATCCGGTACCGAGGAGATCTGCC
 GCC**CGCATCGCC**

ATGTGCAAAACGGCTCCGGAGCAGCGAGGTGTGCGCTGACTGCAGCGGGCCGGATCCTTCCTGGGCATCAG
 TAAATAGGGGAACGTTTTTATGTGATGAGTGCTGCAGTGCCATCGGAGTCTAGGGCGCCATATCTCCA
 AGTGAGGCATCTGAAACACACACCGTGGCCTCCAACACTGCTTCAGATGTTGAGACCTTGATAATAAC
 GGTGCTAACTCTATATGGGAGCATTCTTTGCTGGACCCTGCGTCTATTATGAGTGAAGACGTAAGCTA
 ATCCACAGGATAAAGTACATCCCAATAAAGCGGAATTCATCAGAGCCAAGTATCAGATGTTAGCGTTCGT
 CCATCGTTGCCCTGCCGGGATGACGATAGTGTGACTGCCAAAGATCTTAGCAAGCAACTCCATTCGAGC
 GTGAGAACAGGGAATCTTGAAACCTGTTGAGACTGTTATCTTTAGGAGCACAAGCCAATCTTTTCATC
 CTGAAAAAGGAAACACCCCACTCCATGTTGCCCTCAAAGCAGGGCAGATTTTACAGGCTGAATTATTGGC
 AGTATATGGAGCAGACCCAGGCACACAGGATTCTAGTGGGAAAACCTCCGTTGATTATGCAAGGCAAGGA
 GGGCACCATGAGCTGGCAGAGCGCTCGTGAAAATACAGTATGAGCTAACGGACAGACTAGCCTTCTATC
 TCTGTGGCAGGAAACCAGATCACAAAAATGGACAGCACTTTATAATACCTCAAATGGCAGACAGCAGCCT
 GGATTTGTCTGAATTGGCAAAAGCTGCTAAGAAGAACTTCAATCTTAAGTAATCATTTGTTTGAAGAA
 CTTGCCATGGATGTGTACGATGAAGTTGACAGGCGAGAGACGGATGCAGTCTGGCTTGCCACGAAAACC
 ACAGCGCCTGGTAACCGAGACAACGGTCTGCCCTTTCTTCCGGTCAATCTGAGTACTCATCAACACG
 AAATCAGGGCAGACAGAAGTTAGCTCGGTTCAACGCCATGAGTTTCCACGCTGGTCATTGACATTCTC
 AGTGACCCAAGAGGAGACAGCAGGGCAGTTCTCTCTCGGGTTCAAAGACAATGTGGAGCTCATACTGA
 AAACCATCAATAACCAGCACAGCGTTGAGAGTCAAGACAACGATCAGCCGACTATGACAGCGTGGCATC
 AGACGAAGACACAGATTTGGAAACCACTGCAAGCAAAACAAACCGCAGAGCTTCAAACACTCCAGAGT
 GAAAAATCGAACCTCAGGAAACAGGCCACAACCAATGTATATCAGGTGCAAACCTGGTTCTGAGTACACG
 ACACCTTCAAACACTCTTCTTAAAGAGACGTCCGTCTGCCCGGGCAGTAGGCCATGTCCATGTACGA
 GACCGGATCAGGTGAGAAACCATATCTCCAATGGGAGAAGCGAGCCGCCCGAAGAGAGCAGGATGAGA
 CTCCAGCCCTTCCC CGCACGCATCCAGGCTGGAGAAGCAGAACAGCACACCTGAGAGTACTACGACA
 AACTCCCAACGACATGGAGCCAGATGGCATGGGGTCAAGCCGAAAGGGACGGCAAGAAGTATGGTGTG
 GCCAGGGGATGGCTTGGTACCAGACACAGCAGAACCCCATGTGGCCCAAGCCCCACTCTCCCTAGCACC
 GAAGATGTCATCAGGAAGACTGAACAGATCACAAAAACATACAGGAGCTCTTAAGAGCAGCCCAAGAAA
 ATAAACATGACAGTTATATCCCTGCTCAGAGAGGATACAGTAGCTGTTACAGAAATGGCAGCATTATT
 CCCCCAAAAACCAAGTCTGATATGGTGAGGACTTCCCTTCGTTTACTGACGTCCAGTGCCTACCGACTG
 CAGTCAGAGTGCAAGAAGACCCTCCAGGGGACCCCGGCTCACCCACAGACGTTTACAGTGGTCACGCAGC
 AGGTATCCAGTGTGCGTACGACATCGCCAAGGCTGCCAAGCAGCTGGTTACCATCACCACCAAGAGAA
 CAACAAC

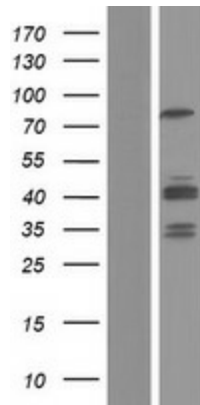
ACGCGTACGCGGGCCGCTCGAGCAGAAACTCATCTCAGAAGAGGATCTGGCAGCAAATGATATCCTGGATT
 ACAAGGATGACGACGATAAGGTTTAA

Components:	The ORF clone is ion-exchange column purified and shipped in a 2D barcoded Matrix tube containing 10ug of transfection-ready, dried plasmid DNA (reconstitute with 100 ul of water).
Reconstitution Method:	<ol style="list-style-type: none">1. Centrifuge at 5,000xg for 5min.2. Carefully open the tube and add 100ul of sterile water to dissolve the DNA.3. Close the tube and incubate for 10 minutes at room temperature.4. Briefly vortex the tube and then do a quick spin (less than 5000xg) to concentrate the liquid at the bottom.5. Store the suspended plasmid at -20°C. The DNA is stable for at least one year from date of shipping when stored at -20°C.
RefSeq:	<u>NM_014776.5</u>
RefSeq Size:	5285 bp
RefSeq ORF:	2040 bp
Locus ID:	9815
UniProt ID:	<u>Q14161</u>
Cytogenetics:	12q24.11
Domains:	ArfGap, ANK, GIT
Protein Families:	Druggable Genome
Protein Pathways:	Endocytosis
MW:	75.6 kDa
Gene Summary:	<p>This gene encodes a member of the GIT protein family, which interact with G protein-coupled receptor kinases and possess ADP-ribosylation factor (ARF) GTPase-activating protein (GAP) activity. GIT proteins traffic between cytoplasmic complexes, focal adhesions, and the cell periphery, and interact with Pak interacting exchange factor beta (PIX) to form large oligomeric complexes that transiently recruit other proteins. GIT proteins regulate cytoskeletal dynamics and participate in receptor internalization and membrane trafficking. This gene has been shown to repress lamellipodial extension and focal adhesion turnover, and is thought to regulate cell motility. This gene undergoes extensive alternative splicing to generate multiple isoforms, but the full-length nature of some of these variants has not been determined. The various isoforms have functional differences, with respect to ARF GAP activity and to G protein-coupled receptor kinase 2 binding. [provided by RefSeq, Sep 2008]</p>

Product images:



Circular map for RC214925



Western blot validation of overexpression lysate (Cat# [LY415041]) using anti-DDK antibody (Cat# [TA50011-100]). Left: Cell lysates from untransfected HEK293T cells; Right: Cell lysates from HEK293T cells transfected with RC214925 using transfection reagent MegaTran 2.0 (Cat# [TT210002]).