

Product datasheet for **RC214920**

TOX2 (NM_032883) Human Tagged ORF Clone

Product data:

Product Type:	Expression Plasmids
Product Name:	TOX2 (NM_032883) Human Tagged ORF Clone
Tag:	Myc-DDK
Symbol:	TOX2
Synonyms:	C20orf100; dj495O3.1; dj1108D11.2; GCX-1; GCX1
Mammalian Cell Selection:	Neomycin
Vector:	pCMV6-Entry (PS100001)
E. coli Selection:	Kanamycin (25 ug/mL)



[View online »](#)

ORF Nucleotide
Sequence:

>RC214920 representing NM_032883
Red=Cloning site Blue=ORF Green=Tags(s)

TTTTGTAATACGACTCACTATAGGGCGGCCGGAATTCGTCGACTGGATCCGGTACCGAGGAGATCTGCC
GCC**CGCATCGCC**

ATGAGTGACGGAAACCCAGAGCTCTGTCAACCAGCCAGACCTACAACGGCCAGAGCGAGAACAACGAAG
ACTATGAGATCCCCCGATAAACCTCCCAACCTCCCGGAGCCATCCCTCCTGCACCTGGGGGACCACGA
AGCCAGCTACCACTCGTGTGCCACGGCTCACCCCCAACGGTCTGCTCCCTGCCTACTCTATCAGGCC
ATGGACCTCCCAGCCATCATGGTGTCCAACATGCTAGCACAGGACAGCCACCTGTGTGGGCCAGCTGC
CCACGATCCAGGAGATGGTCCACTCGGAAGTGGCTGCCTATGACTCGGGCCGGCCGGGCCCTGTGGG
TCGCCCCGCAATGCTGGCCAGCCACATGAGTGCCTCAGCCAGTCCAGCTCATCTGCAGATGGGCATC
CGGAGCAGCATCGCCACAGCTCCCATCACCGCCGGGAGCAAGTCAGCGACCCCTCTCCCTCCAGCT
CCTACTCAGGAAGAGGAGTCGGAAGTGCATTTCAAGATCTCGGGAGAAAAGAGACCTTCAGCCGACCCAGG
AAAAAAGGCCAAGAACCCGAAGAAGAAGAAAAGAAGGACCCCAATGAGCCGAGAACCTGTGTGGCC
TACGCACTCTTCTCAGAGACACTCAGGCGCCATCAAGGGTCAAGACCCAGTGCCTCTTCGGTGACG
TGTCAAAATCGTGGCCTCCATGTGGGACAGCCTGGGAGAGGAACAGAAGCAGGCCTACAAGAGGAAGAC
AGAAGCAGCAAAGAAGGAATATCTGAAGGCCCTGGCAGCCTACCGGGCTAGCCTCGTCTCCAAGAGCTCC
CCAGATCAAGGTGAGACCAAGAGCACTCAGGCAAACCCACCAGCCAAAATGCTCCACCCAAGCAGCCCA
TGATATGCCATGCCAGGCCTGGCTCCTTCTGACGCCGTGGACCTGCAGGCCTCCGCAGTGGGGCCTC
CCCTGCCAGCCTCGCCGGACGCTGGGCTCCAAGTCTCTGCTGCCAGGCCTCAGTGGTCCCCGCCGCCG
CCACCTCCTTCCCGCTCAGCCCCACACTGCACCAGCAGCTGTCACTGCCCCCTCAGCCAGGGCGCCC
TCCTCAGTCCACCTGTTAGCATGTCCCCAGCCCCCAGCCCCCTGTCTGCCACCCCAATGGCCTCCA
GGTGCAGCTGGCGATGAGCCCCCTCACCTCAGGGCCACAGGACTTCCCGCACATCTCTGAGTTCCCCAGC
AGCTCGGGATCCTGCTCACCTGGCCATCCAACCCACCAGCAGCGGGGACTGGGACAGCAGCTACCCCA
GTGGGGAGTGTGGCATCAGCACCTGCAGCCTGCTCCCCAGGGACAATCGCTCTACCTCAC

ACGCGTACGCGGCCGCTCGAGCAGAACTCATCTCAGAAGAGGATCTGGCAGCAAATGATATCCTGGATT
ACAAGGATGACGACGATAAGGTTTAA

Protein Sequence:

>RC214920 representing NM_032883
Red=Cloning site Green=Tags(s)

MSDGNPELLSTSQTYNGQSENNEDYEIPPITPPNLPESLLHLGDHEASYHSLCHGLTPNGLLPAYSQYA
MDLPAIMVSNMLAQDShLLSGQLPTIQEMVHSEVAAYDSGRPGPLLGRPAMLASHMSALSQSQLISQMG
RSSIAHSSPSPPGSKSATPSPSSSTQEESEVHFKISGEKRPSADPGKKAKNPKKKKKDPNEPQKPVSA
YALFFRDTQAAIKGQNPSTFGDVSKIIVASMWDSLGEQKQAYKRKTEAAKKEYLKALAAAYRASLVSKSS
PDQGETKSTQANPPAKMLPPKQPMYAMPGLASFLTPSDLQAFRSGASPLARTLGSKSLLPGLSASPPP
PPSFPLSPTLHQQLSLPPHAQGALLSPPVSMSPAPQPPVLPMPALQVQLAMSPSPPGPQDFPHISEFPS
SSGSCSPGPSNPTSSGDWDSYPSGECGISTCSLLPRDKSLYLT

TRTRPLEQKLISEEDLAANDILDYKDDDDKV

Chromatograms:

https://cdn.origene.com/chromatograms/mk6578_h12.zip

Restriction Sites:

Sgfl-Mlul

Cloning Scheme:


ACCN: NM_032883

ORF Size: 1392 bp

OTI Disclaimer: The molecular sequence of this clone aligns with the gene accession number as a point of reference only. However, individual transcript sequences of the same gene can differ through naturally occurring variations (e.g. polymorphisms), each with its own valid existence. This clone is substantially in agreement with the reference, but a complete review of all prevailing variants is recommended prior to use. [More info](#)

OTI Annotation: This clone was engineered to express the complete ORF with an expression tag. Expression varies depending on the nature of the gene.

Components: The ORF clone is ion-exchange column purified and shipped in a 2D barcoded Matrix tube containing 10ug of transfection-ready, dried plasmid DNA (reconstitute with 100 ul of water).

Reconstitution Method:

1. Centrifuge at 5,000xg for 5min.
2. Carefully open the tube and add 100ul of sterile water to dissolve the DNA.
3. Close the tube and incubate for 10 minutes at room temperature.
4. Briefly vortex the tube and then do a quick spin (less than 5000xg) to concentrate the liquid at the bottom.
5. Store the suspended plasmid at -20°C. The DNA is stable for at least one year from date of shipping when stored at -20°C.

RefSeq: [NM_032883.3](#)

RefSeq Size: 2533 bp

RefSeq ORF: 1395 bp

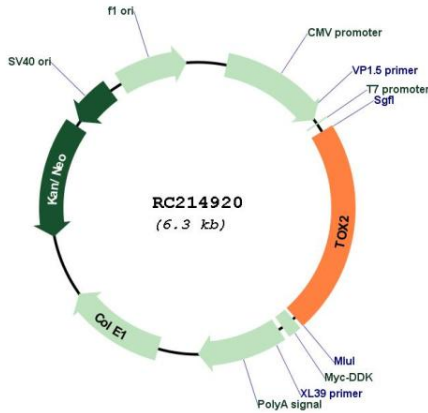
Locus ID: 84969

UniProt ID: [Q96NM4](#)

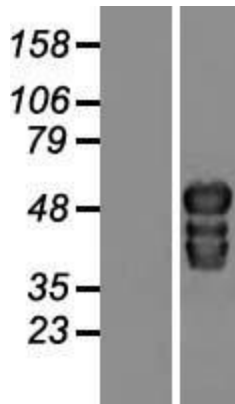
Cytogenetics: 20q13.12

Protein Families: Transcription Factors
MW: 48.9 kDa
Gene Summary: Putative transcriptional activator involved in the hypothalamo-pituitary-gonadal system. [UniProtKB/Swiss-Prot Function]

Product images:



Circular map for RC214920



Western blot validation of overexpression lysate (Cat# [LY409809]) using anti-DDK antibody (Cat# [TA50011-100]). Left: Cell lysates from untransfected HEK293T cells; Right: Cell lysates from HEK293T cells transfected with RC214920 using transfection reagent MegaTran 2.0 (Cat# [TT210002]).