

## Product datasheet for RC214918

### KDM5B (NM\_006618) Human Tagged ORF Clone

#### Product data:

Product Type:	Expression Plasmids
Product Name:	KDM5B (NM_006618) Human Tagged ORF Clone
Tag:	Myc-DDK
Symbol:	KDM5B
Synonyms:	CT31; JARID1B; MRT65; PLU-1; PLU1; PPP1R98; PUT1; RBBP2H1A; RBP2-H1
Mammalian Cell Selection:	Neomycin
Vector:	pCMV6-Entry (PS100001)
E. coli Selection:	Kanamycin (25 ug/mL)
ORF Nucleotide Sequence:	>RC214918 representing NM_006618 Red=Cloning site Blue=ORF Green=Tags(s)

TTTTGTAATACGACTCACTATAGGGCGGCCGGGAATTCGTCGACTGGATCCGGTACCGAGGAGATCTGCC  
GCC**CGATCGCC**

ATGGAGGCGGCCACCACACTGCACCCAGGCCCGCCGGCGCTGCCCTCGGGGGCCGGGCCCGCTGG  
GCGAGTTCCTGCCTCCACCCGAGTGCCCGTCTTCAACCCAGCTGGGAAGAGTTCGCGGACCCCTTCGC  
TTTCATCCACAAGATCCGGCCATAGCCGAGCAGACTGGCATCTGTAAGGTGCGGCCCGCCGGATTGG  
CAGCCACCATTTCATGTGATGTTGATAAACTTCATTTACGCCACGTATCCAGAGACTGAATGAATTGG  
AGGCCAAACTCGTGAAAATTGAATTTCTGGACCAGATTGCAAAGTACTGGGAGTTACAGGGAAGTAC  
TCTGAAAATCCACATGTGGAGAGGAAGATCTGGACTTATTTACGCTTAATAAGTTAGTTGCAGAAGAA  
GGTGGATTTGAGTTGTTGCAAGGATAGAAAATGGACAAAATTGCTACCAAGATGGGGTTTGCTCCTG  
GCAAAGCAGTGGGCTCACATATCAGAGGGCATTATGAACGAATTCTCAACCCCTACAACCTATTCTCTGTC  
CGGAGACAGCCTAAGGTGTTGCAAGCCAAACCTGACCACAGACACTAAGGACAAGGAGTACAAACCC  
CATGATATTTCCAGAGGCAGTCTGTGCAGCCTTCGGAACGTGCCCCCAGCCGACGAGCAAAACGCA  
TGAGAGCAGAGGCCATGAATATTAATAAGAACCCGAGGAGACAACAGAAGCCAGAATCATAATCTGAG  
ACGTGCAATGGTGTCCAACCTCAAAAATGTGAAAATGAGAAAGAAATGAAGAGTAGCATCAAGCAAGAA  
CCTATTGAGAGGAAAGATTATTTGAGAAAATGAGAAGGAAAAGCCCAAGAGTCGATCAAAAAGCCCA  
CCAATGCTGTGGACCTGTATGTCTGCTTTTATGTGGCAGTGGCAATGATGAAGACCGGCTACTGTTGTG  
TGATGGCTGTGATGACAGTTACCATACCTTTTGCTTGATCCCACCTCTCCATGATGTTCCAAGGGAGAC  
TGGAGGTGCTCCTAAGTGTGGCTCAGGAATGTAGTAAGCCACAAGAAGCATTGGCTTTGAACAAGCAG  
CCAGGGACTATACCCTCCGACTTTTGGGAAAATGGCAGATGCGTTCAAATCTGATTACTTCAACATGCC  
AGTCCATATGGTCCCACAGAGCTTGTGAGAAAGAAATTTGGAGACTAGTAAGCACTATTGAGGAGGAT  
GTCACAGTGAATATGGAGCTGACATTGCCTCAAAGGAATTTGGCAGTGGCTTCTCTGTCCGAGATGGGA  
AAATCAAACCTCACCTGAGGAAGAGGAGTATCTTGATAGTGGCTGGAATTTGAACAACATGCCAGTGAT  
GGAGCAGTCTGCTTGCACATATTACTGCTGATATATGTGGCATGAAACTTCTTGTTGTATGTGGGA



[View online »](#)

ATGTGCTTTTCTTCATTCTGTTGGCACATTGAAGACCACTGGAGCTATTCAATTAACACTTGCCTGGG  
 GTGAGCCAAAAACCTGGTATGGAGTCCCAGGGTATGCTGCTGAGCAGCTAGAAAAATGAATGAAGAACT  
 AGCTCCAGAACTCTTTGTGTCCCAGCCGGATCTCCTCCATCAGCTTGTGACCATCATGAACCCCAATACC  
 CTGATGACTCATGAAGTGCTGTTTACCAGAACTAATCAGTGTGCTGGGGAGTTTGTGATTACATTTCCAA  
 GAGCCTACCACAGTGGTTTTAACAGGGTTTTAATTTTGTGAGGCTGTTAACTTCTGCACTGTTGATTG  
 GCTGCCATTAGGCCGACAGTGTGTGGAGCATTATCGCTTGCTTCATCGATATTGTGTGTTTTCCCATGAT  
 GAGATGATCTGCAAGATGGCTTCCAAGGCTGATGTATTAGATGTTGTAGTGGCTTCAACTGTTCCAGAAAG  
 ACATGGCCATTATGATTGAGGATGAGAAAGCTTTAAGAGAACTGTCCGTAATTTGGGAGTGATTGATTC  
 GGAAAGAATGGATTTTGGCTGTTGCCAGATGATGAACGTCAGTGTGAAAATGCAAACTACATGCTTC  
 ATGTCTGCCATCTCCTGTTCTTGTAAACCTGGCCTTCTTGTTCCTGCATCATGTAAAAGAATTGTGTT  
 CCTGTCTCCTTATAAATAAAATTGCGGTATAGGTACACGCTGGATGATCTCTACCCTATGATGAATGC  
 ATTGAAGCTTCGAGCAGAATCTTACAACGAATGGCCTTGAATGTGAATGAAGCTTTGGAGGCAAAGATC  
 AACAAGAAGAAAAGCCTTGTGAGCTTCAAGGCTTAAATGAAGAATCTGAAATGAAGAAATTTCCAGACA  
 ATGATCTTTTGCACACCTTCGCTAGTCACACAGGATGCAGAGAAGTGTGCTCTGTTGCGCAGCAGTT  
 GCTTAATGGCAAAAGGCAAACTAGATATCGATCTGGTGGAGGAAATCCCAAAATCAGTTGACAGTGAAT  
 GAGCTCCGGCAGTTTGTAAACACAGCTGTATGCTCTCCATGTGTCTCAGTCAGACACCATTACTAAAGG  
 ATCTCTTGAATCGTGTAGAAGATTTTCAACAGCATAGTCAGAACTACTCTCTGAGGAAACGCTAGTGC  
 TGCGGAGCTGCAGGACTTGTAGATGTCAGCTTTGAATTTGATGTTGAACTTCCACAGCTTGTGAGATG  
 CGTATCCGTTTGGAAACAAGCCGTTGGCTAGAAGAGGTGCAGCAAGCTTGCCTAGACCCAGCTCCCTTA  
 CTTTAGATGATATGAGACGTCTCATAGACCTAGGGGTAGGGCTGGCCCGTATTCAGCAGTGGAGAAAGC  
 TATGGCCCGGCTGCAGGAACTGCTCACAGTGTGAGCAGTGGGACGACAAAGCAAGAGTCTCCTCAAG  
 GCCAGGCCACGACATTCATTGAATAGCCTTGTACGGCAGTAAAGGAAATCGAAGAGATCCCTGCATATC  
 TGCCCAATGGTGGCTCTGAAAGACTCAGTGCAGAGAGCCAGAGACTGGCTTCAGGATGTAGAGGATC  
 GCAGGCTGGAGGACGTGTGCCAGTGTAGACACTCATAGAACTTGTACACGAGGCCGATCTATCCCG  
 GTACATCTGAATCTTTGCCAAGACTGGAAACCTAGTAGCTGAGGTTCCAGGCTTGGAAAGAATGTGCTG  
 TTAATACATCTTACTGACTGAGAATCTCCATATTCTCTTAGAGGTGCTGTGCTCGATGTGATATTGG  
 CCTTTTGGGATTGAAAAGGAAGCAGAGAAAGTTAAAGGAGCCCTTGCCAAATGGAAGAAAAAAGCACC  
 AAATTAGAGAGTCTGAGTGACCTGGAGAGAGCTTAACTGAAAGCAAGGAGACTGCTTCAGCTATGGCAA  
 CTCTTGGGAAGCTCGCCTAAGGAAATGGAAGCCTTGCAGTCTCTCAGACTCGCAATGAAGGGAAAT  
 GCTGTGCGCTCTCCAAGATGTGGATATAAAAATCTGCCTATGTCAGAAGGCCCCAGCTGCCCTATGATT  
 CAATGTGAACTCTGCAGGATGCTTTCCACACCAGTTGTGTGGCGGTACCCAGTATTTACAGGGCCTGC  
 GAATCTGGCTTTGTCCCAATTGTGCGGAGTGCAGAGAACTCCATTAGAGAAAATTTGCCCCTGCTCGC  
 CTCCCTCAGCGTATCCGAGTTCGCTTCTGAGGGAGATGCACTTCGATATATGATTGAAAAGAACCGTG  
 AACTGGCAGCACAGAGCCAGCAACTGCTTTCGTGAGGGAATCTTAAATTTGTGCAAGATCGAGTGGGCT  
 CAGGACTGTTATATAGCAGATGGCAAGCCTCAGCAGGACAGGTGTGAGACACAAACAAGGTATCTCAACC  
 TCCTGGCACAACATATTTTCTTGGCTGATGACTGGGACAACAGAACCTCATATTTGCACTCCCTTTC  
 TCAACTGGACGAAGTTGTATCCCTCCATGGTGTAGTCCAGAAGTGAATGAATATTGATGGAAGCCC  
 AGCTGCTCCAGGTATCCCTTCTGAAATTCAGGAACTTTACCAGACTTTACTTGCAAAGCCAAGCCCTGC  
 TCAGCAGACTGACCGAAGCTCACCAGTGCAGTGCAGTGCAGTGCAGTGCAGTGCAGTGCAGTGCAGTGC  
 GATGGAATTAACAGTCTTGAGAGAAAAGTGAAGAGACGCCTGGAAGAGAGGGCCTCTCCAGTGCAGGCT  
 GGAACAGGTTAAGAAAATGCGGACCCCAAAAAGAAAATCAAAGTGCAGCACCCTCAAGGACATGAA  
 CAATTTCAAGTTAGAGAGAGAGCGTAGCTATGAATTAGTTCGTTCTGCTGAAACTCATTCCCTGCCTCA  
 GACACATCTATTCCGAACAGGAAGACTCTGAGGATGAAGATGCCATCTGCCAGCTGTGAGCTGCCTGC  
 AGCCAGAAGGAGATGAGGTGGACTGGTCCAGTGTGATGGCAGCTGCAATCAGTGGTTTCATCAGGTCTG  
 TGTTGGTGTCTCCCAAGATGGCAGAGAAAGAAGACTACATCTGTGTGCGCTGTACTGTGAAGGACGCA  
 CCAAGCCGAAAG

ACGCGTACGCGGCCGCTCGAGCAGAACTCATCTCAGAAGAGGATCTGGCAGCAAATGATATCCTGGATT  
 ACAAGGATGACGACGAT AAGGTTTAA

**Protein Sequence:** >RC214918 representing NM\_006618  
 Red=Cloning site Green=Tags(s)

```

MEAATTLHPGPRPALPLGGPGPLGEFLPPPECPVFEPWSWEEFADPF AF IHKIRPIAEQTGICKVRPPPDW
QPPFACDVKLHFTPRIQRLNELEAQTRVKLNFLDQIAKYWELQGSTLKI PHVERKILDLFQLNKLVAEE
GGF AVVCKDRKWKIATKMGFAPGKAVGSHIRGHYERILNPYNLFLSGDSL RCLQKPNLTTDTKDKEYKP
HDIPQRQSVQPSETCPPARRAKRMRAEAMNIKIEPEETTEARTHNLRRRMGCPTPKCENEKEMKSSIKQE
PIERKDYIVENEKEPKSRSKKATNAVDLYVCLLCGSGNDEDRLLLCDGCDSDSYHTFCLIPPLHDVPGKD
WRCPKCLAQECSKPQEAFGFEQAARDYTLRTFGEMADAFKSDYFNMPVHMVPTTELVEKEFWRLVSTIEED
VTVEYGADIASKEFGSGFPVRDGKIKLSPEEEEEYLD SGWNLNNMPVMEQSVLAHITADICGMKLPWL YVG
MCFSSFCWHIEDHWSYSINYLHWGEPKTWYGVPGYAAEQLE NVMKKLAPELFVSQPDLLHLQVLTIMNPNT
LMTHEVPVYRTNQCAGEFVITFPRAYHSGFNQGFNFAEAVNFCTVDWLP LGRQCVEHYRLLHRYCVF SHD
EMICKMASKADVL DVVVASTVQKDMAIMIEDEKALRETVRKLGVIDSERMDFELLPDDERQCVKCKTTTCF
MSAISCSCCKPGLLVCLHHVKELCSCPPYKYLRYRYTLDDL YPMMNALKLRAESYNEWALNVNEALEAKI
NKKKSLVSFKALIEESEMKKFPDNDLLRHLRLVTQDAEKASVAQQL LNKQRQTRYRSGGK SQNQLTVN
ELRQFVTQLYALPCVLSQTPLLKDLLNRVEDFQQHSQKLLSEETPSAAELQD LLDVSEFDFVLPQLAEM
RIRLEQARWLEEVQQA CLDPSSLTDDMRRLIDLGVGLAPYSAVEKAMARLQELLTVSEHWDDKAKSLLK
ARPRHSLNSLATAVKEIEEIPAYLPNGAALKDSVQRARDWLQDVEGLQAGGRVPVLDTLIELVTRGRSIP
VHLNSLPRLETLVAEVQAWKECAVNTFLTENSPYSLLEVL CPRCDIGLLGLKRKQRLKEPLPNGKKKST
KLESLSDLERALTESKETASAMATLGEARLREMEALQSLRLANEGKLL SPLQDVDIKICLCQKAPAAMI
QCELCRDAFHTSCVAVPSISQGLRIWLCPHCRRSEKPPLEKIL PLLASLQRIRVRLPEGDALRYMIERTV
NWQHRAQQLLSSGNLKFVQDRVGSGLLYSRWQASAGQVSDTNKVSQPPGTT SFSLPDDWDNRTSYLHSPF
STGRSC IPLHGVSPEVNELLMEAQLLQVSLPEIQEL YQTLLAKPSPAQQTDRSSPVRPSSEKNDCCRGKR
DGINSLERLKRRLEREGLSSERWERVKKMRTPK KKKIKLSHPKDMNNFKLERERSYELVRS AETHSLPS
DTSYSEQEDSEDAICPAVSCLQPEGDEVDWVQC DGSNCQWFHQVCGVSPEMA EKEDYICVRCTVKDA
PSRK
  
```

TRTRPLEQKLISEEDLAANDILDYKDDDDKV

**Chromatograms:** [https://cdn.origene.com/chromatograms/mk6204\\_g09.zip](https://cdn.origene.com/chromatograms/mk6204_g09.zip)

**Restriction Sites:** SgfI-MluI

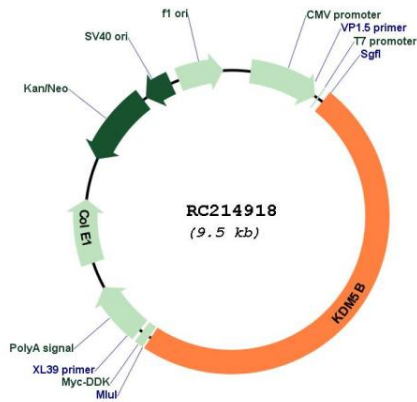
**Cloning Scheme:**



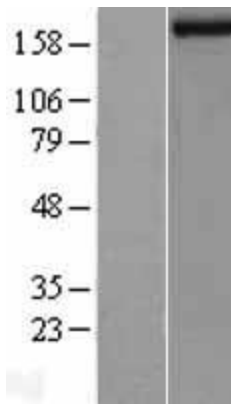
**ACCN:** NM\_006618

<b>ORF Size:</b>	4632 bp
<b>OTI Disclaimer:</b>	The molecular sequence of this clone aligns with the gene accession number as a point of reference only. However, individual transcript sequences of the same gene can differ through naturally occurring variations (e.g. polymorphisms), each with its own valid existence. This clone is substantially in agreement with the reference, but a complete review of all prevailing variants is recommended prior to use. <a href="#">More info</a>
<b>OTI Annotation:</b>	This clone was engineered to express the complete ORF with an expression tag. Expression varies depending on the nature of the gene.
<b>Components:</b>	The ORF clone is ion-exchange column purified and shipped in a 2D barcoded Matrix tube containing 10ug of transfection-ready, dried plasmid DNA (reconstitute with 100 ul of water).
<b>Reconstitution Method:</b>	<ol style="list-style-type: none"><li>1. Centrifuge at 5,000xg for 5min.</li><li>2. Carefully open the tube and add 100ul of sterile water to dissolve the DNA.</li><li>3. Close the tube and incubate for 10 minutes at room temperature.</li><li>4. Briefly vortex the tube and then do a quick spin (less than 5000xg) to concentrate the liquid at the bottom.</li><li>5. Store the suspended plasmid at -20°C. The DNA is stable for at least one year from date of shipping when stored at -20°C.</li></ol>
<b>Note:</b>	Plasmids are not sterile. For experiments where strict sterility is required, filtration with 0.22um filter is required.
<b>RefSeq:</b>	<a href="#">NM_006618.5</a>
<b>RefSeq Size:</b>	6393 bp
<b>RefSeq ORF:</b>	4635 bp
<b>Locus ID:</b>	10765
<b>UniProt ID:</b>	<a href="#">Q9UGL1</a>
<b>Cytogenetics:</b>	1q32.1
<b>Domains:</b>	ARID, PHD, JmjC, JmjN, zf-C5HC2
<b>Protein Families:</b>	Druggable Genome, Transcription Factors
<b>MW:</b>	175.5 kDa
<b>Gene Summary:</b>	This gene encodes a lysine-specific histone demethylase that belongs to the jumonji/ARID domain-containing family of histone demethylases. The encoded protein is capable of demethylating tri-, di- and monomethylated lysine 4 of histone H3. This protein plays a role in the transcriptional repression or certain tumor suppressor genes and is upregulated in certain cancer cells. This protein may also play a role in genome stability and DNA repair. Alternate splicing results in multiple transcript variants. [provided by RefSeq, Nov 2016]

Product images:



Circular map for RC214918



Western blot validation of overexpression lysate (Cat# [LY401985]) using anti-DDK antibody (Cat# [TA50011-100]). Left: Cell lysates from untransfected HEK293T cells; Right: Cell lysates from HEK293T cells transfected with RC214918 using transfection reagent MegaTran 2.0 (Cat# [TT210002]).