

Product datasheet for RC214916

DMAC2 (NM_018035) Human Tagged ORF Clone

Product data:

Product Type: Expression Plasmids
Product Name: DMAC2 (NM_018035) Human Tagged ORF Clone
Tag: Myc-DDK
Symbol: DMAC2
Synonyms: ATP5SL
Mammalian Cell Selection: Neomycin
Vector: pCMV6-Entry (PS100001)
E. coli Selection: Kanamycin (25 ug/mL)
ORF Nucleotide Sequence: >RC214916 representing NM_018035
 Red=Cloning site Blue=ORF Green=Tags(s)

TTTTGTAATACGACTCACTATAGGGCGCCGGGAATTCGTCGACTGGATCCGGTACCGAGGAGATCTGCC
 GCC**CGATCGCC**

ATGGCGGCTCCCTGGGCGTCCCTGCGCCTGGTCGCCCCATGTGGAATGGGCGTATCAGGGGCATCCATC
 GCCTGGGTGCGGCAGTGGCCCCAGAGGGCAGTCAGAAGAAGAAAAGGACAATACTCCAGTTCCTGACCAA
 CTATTTCTACGATGTGGAGGCTCTGAGGGATTACTTGCTCAAAGGGAGATGTACAAGGTGCATGAGAAA
 AATCGATCTTACACCTGGCTGGAGAAGCAACATGGTCCATACGGCGCAGGTGCCTTTTTTCATCCTGAAGC
 AGGGAGGCGCAGTCAAGTTTCGAGACAAGGAGTGGATCAGGCCAGATAAGTATGGCCATTTCTCTCAGGA
 GTTCTGGAATTTCTGTGAAGTGCCTGTGGAAGCTGTGGATGCCGGTGACTGTGACATCAACTACGAGGGC
 CTGGATAACCTCCTCCGCTGAAGGAGCTCCAGTCTTGTGCTGCAGCGCTGCTCCACGTGGACGACT
 GGTGTCTCAGCCGCTCTACCACTGGCCGACTCGTTGCAGGAGCTCTGCTGGCCGTTGCCCCCGCAT
 CTCCGAACGGGGCCTCGCTGCCTCCACCCTCCAGAACCTCCGAGGCTGGACATCTCGGACCTCCCT
 GCCGTGTCCAACCTGGCCTCACTCAGATATTGGTGGAGGAGATGCTGCCAATTGCGAGGTTGTGGGAG
 TCGACTGGGCTGAGGGCCTGAAGTCAGGGCCGGAGGAGCAGCCTCGGGACACAGCCAGCCCTGTCCCTGC
 C

ACGCGTACGCGGCCGCTCGAGCAGAACTCATCTCAGAAGAGGATCTGGCAGCAAATGATATCCTGGATT
 ACAAGGATGACGACGATAAGGTTTAA



[View online »](#)

Protein Sequence: >RC214916 representing NM_018035
 Red=Cloning site Green=Tags(s)

MAAPWASLRLVAPMWNIRIRGIHRLGAAVAPEGSQKKRRTILQFLTNYFYDVEALRDYLLQREMYKVHEK
 NRSYTWLEKQHGPYAGAFFILKQGGAVKFRDKEWIRPKYGHF SQEFWNFCEVPVEAVDAGDCDINYEG
 LDNLLRLKELQSLSLQRCSHVDDWCL SRLYPLADSLQELSLAGCPRI SERGLACLHHLQNLRRLDI SDLP
 AVSNPGLTQILVEEMLPNCEVVGVDWAEGLKSGPEEQPRDTASPVPA

TRTRPLEQKLISEEDLAANDILDYKDDDDKV

Chromatograms: https://cdn.origene.com/chromatograms/mk6479_d04.zip

Restriction Sites: SgfI-MluI

Cloning Scheme:



ACCN: NM_018035

ORF Size: 771 bp

OTI Disclaimer: The molecular sequence of this clone aligns with the gene accession number as a point of reference only. However, individual transcript sequences of the same gene can differ through naturally occurring variations (e.g. polymorphisms), each with its own valid existence. This clone is substantially in agreement with the reference, but a complete review of all prevailing variants is recommended prior to use. [More info](#)

OTI Annotation: This clone was engineered to express the complete ORF with an expression tag. Expression varies depending on the nature of the gene.

Components: The ORF clone is ion-exchange column purified and shipped in a 2D barcoded Matrix tube containing 10ug of transfection-ready, dried plasmid DNA (reconstitute with 100 ul of water).

Reconstitution Method:

1. Centrifuge at 5,000xg for 5min.
2. Carefully open the tube and add 100ul of sterile water to dissolve the DNA.
3. Close the tube and incubate for 10 minutes at room temperature.
4. Briefly vortex the tube and then do a quick spin (less than 5000xg) to concentrate the liquid at the bottom.
5. Store the suspended plasmid at -20°C. The DNA is stable for at least one year from date of shipping when stored at -20°C.

RefSeq: [NM_018035.1](#), [NP_060505.1](#)

RefSeq Size: 1692 bp

RefSeq ORF: 774 bp

Locus ID: 55101

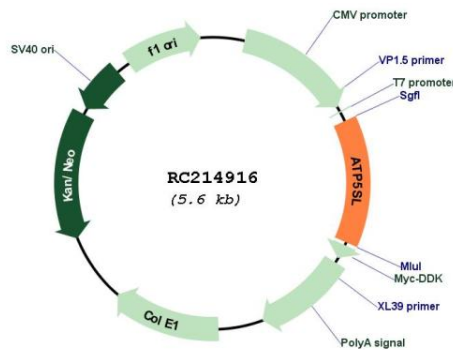
UniProt ID: [Q9NW81](#)

Cytogenetics: 19q13.2

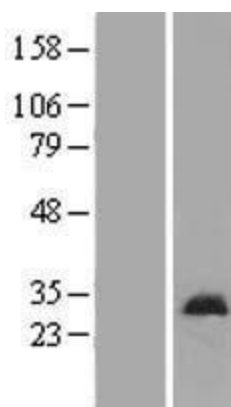
MW: 29.1 kDa

Gene Summary: Required for the assembly of the mitochondrial NADH:ubiquinone oxidoreductase complex (complex I). Involved in the assembly of the distal region of complex I.[UniProtKB/Swiss-Prot Function]

Product images:



Circular map for RC214916



Western blot validation of overexpression lysate (Cat# [LY413374]) using anti-DDK antibody (Cat# [TA50011-100]). Left: Cell lysates from untransfected HEK293T cells; Right: Cell lysates from HEK293T cells transfected with RC214916 using transfection reagent MegaTran 2.0 (Cat# [TT210002]).