

## Product datasheet for RC214913

### RAB41 (NM\_001032726) Human Tagged ORF Clone

#### Product data:

**Product Type:** Expression Plasmids  
**Product Name:** RAB41 (NM\_001032726) Human Tagged ORF Clone  
**Tag:** Myc-DDK  
**Symbol:** RAB41  
**Mammalian Cell Selection:** Neomycin  
**Vector:** pCMV6-Entry (PS100001)  
**E. coli Selection:** Kanamycin (25 ug/mL)  
**ORF Nucleotide Sequence:** >RC214913 representing NM\_001032726  
 Red=Cloning site Blue=ORF Green=Tags(s)

TTTTGTAATACGACTCACTATAGGGCGGCCGGAATTCGTCGACTGGATCCGGTACCGAGGAGATCTGCC  
 GCC**CGATCGCC**

ATGTCTGCCTTTGGTCACGACGAGGCCTGGATGGAGGCCGGAGGCTTTGGTCTGGAGGCTGCCGAAAGAA  
 CGGAATACCAGTCTCTGTGCAAATCTAAACTCTTATTCTGGGAGAGCAGAGCGGGAAGACATCCATCAT  
 CAGCCGCTTACGTACAACAGCTTCGGCTGCGCCTGCCAGGCAACTGTTGGAATTGACTTCTTGTCTAAG  
 ACCATGTACTTGGAGACCAAATAGTTTCAGCTGCAGCTATGGACACAGCTGGCCAGGAGCGCTTTCACA  
 GCCTAATTCCTAGCTACATTCGTGATTCAACTATTGCAGTGGTTGTCTATGACATTACAAACATCAATTC  
 TTTAAGGAGACAGATAAGTGGGTAGAACACGTGCGAGCAGAAAGAGGTGACGATGTTGTCATCATGTTG  
 TTGGGTAACAAGATTGATTTGGATAACAAAAGACAAGTCACTGCAGAACAGGGTGAAGAAAAATCCAGAA  
 ACCTCAATGTGATGTTTATTGAGACCAGTGCCAAAACCGTTACAACGTGAAAAAGCTGTTCCGGCGTGT  
 GGCTTCTGCCCTTCTTCCACAAGGACTTCACCTCCACAAAAGAGGGGACGGTTGAAATCGAACTGGAA  
 TCCTTCGAGGAGTCAGGCAACAGAAGCTATTGT

**ACGCGT**ACGCGGCCGCTCGAGCAGAAACTCATCTCAGAAGAGGATCTGGCAGCAAATGATATCCTGGATT  
 ACAAGGATGACGACGATAAGGTTTAA

**Protein Sequence:** >RC214913 representing NM\_001032726  
 Red=Cloning site Green=Tags(s)

MSAFGHDEAWMEAGGFLEAAERTEYQSLCKSKLLFLGEQSGKTSIISRFMYNSFGCACQATVGIDFLSK  
 TMYLEDQIVQLQLWDTAGQERFHSILIPSYIRDSTIAVVVYDITNINSFKETDKWVEHVRAERGDDVVIML  
 LGNKIDLNKRQVTAEQGEKSRNLNVMFIETSAKTGYNVKKLFRRVASALLSTRTPPPKEGTVEIELE  
 SFEESGNRSYC

**TRTRPLEQKLISEEDLAANDILDYKDDDDKV**



Chromatograms: [https://cdn.origene.com/chromatograms/mk6098\\_g02.zip](https://cdn.origene.com/chromatograms/mk6098_g02.zip)

Restriction Sites: SgfI-MluI

Cloning Scheme:



ACCN: NM\_001032726

ORF Size: 2537 bp

OTI Disclaimer: The molecular sequence of this clone aligns with the gene accession number as a point of reference only. However, individual transcript sequences of the same gene can differ through naturally occurring variations (e.g. polymorphisms), each with its own valid existence. This clone is substantially in agreement with the reference, but a complete review of all prevailing variants is recommended prior to use. [More info](#)

OTI Annotation: This clone was engineered to express the complete ORF with an expression tag. Expression varies depending on the nature of the gene.

Components: The ORF clone is ion-exchange column purified and shipped in a 2D barcoded Matrix tube containing 10ug of transfection-ready, dried plasmid DNA (reconstitute with 100 ul of water).

Reconstitution Method:

1. Centrifuge at 5,000xg for 5min.
2. Carefully open the tube and add 100ul of sterile water to dissolve the DNA.
3. Close the tube and incubate for 10 minutes at room temperature.
4. Briefly vortex the tube and then do a quick spin (less than 5000xg) to concentrate the liquid at the bottom.
5. Store the suspended plasmid at -20°C. The DNA is stable for at least one year from date of shipping when stored at -20°C.

RefSeq: [NM\\_001032726.3](#)

RefSeq Size: 1028 bp

RefSeq ORF: 666 bp

Locus ID: 347517

UniProt ID: [Q5JT25](#)

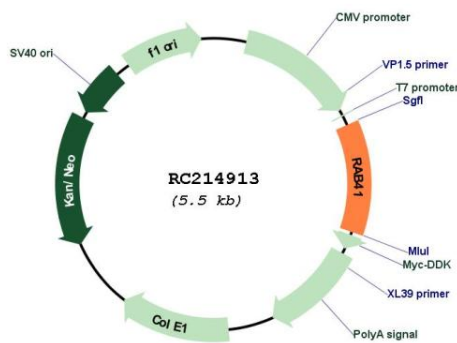
Cytogenetics: Xq13.1

Protein Families: Druggable Genome

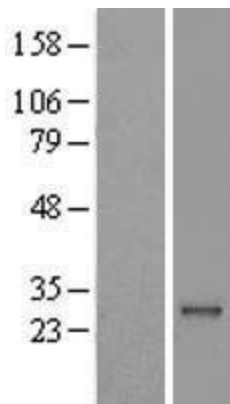
MW: 24.9 kDa

**Gene Summary:** This gene encodes a small GTP-binding protein that belongs to the largest family within the Ras superfamily. These proteins function as regulators of membrane trafficking. They cycle between inactive GDP-bound and activated GTP-bound states, which is controlled by GTP hydrolysis-activating proteins (GAPs). This family member can be activated by the GAP protein RN-Tre, and it is localized to the Golgi complex. [provided by RefSeq, May 2010]

**Product images:**



Circular map for RC214913



Western blot validation of overexpression lysate (Cat# [LY422331]) using anti-DDK antibody (Cat# [TA50011-100]). Left: Cell lysates from untransfected HEK293T cells; Right: Cell lysates from HEK293T cells transfected with RC214913 using transfection reagent MegaTran 2.0 (Cat# [TT210002]).