

Product datasheet for **RC214912**

CRISPLD2 (NM_031476) Human Tagged ORF Clone

Product data:

Product Type:	Expression Plasmids
Product Name:	CRISPLD2 (NM_031476) Human Tagged ORF Clone
Tag:	Myc-DDK
Symbol:	CRISPLD2
Synonyms:	CRISP11; LCRISP2; LGL1
Mammalian Cell Selection:	Neomycin
Vector:	pCMV6-Entry (PS100001)
E. coli Selection:	Kanamycin (25 ug/mL)



[View online »](#)

ORF Nucleotide Sequence:

>RC214912 representing NM_031476
 Red=Cloning site Blue=ORF Green=Tags(s)

TTTTGTAATACGACTCACTATAGGGCGGCCGGGAATTCGTCGACTGGATCCGGTACCGAGGAGATCTGCC
 GCC**CGGATCGCC**

ATGAGCTGCGTCTGGGTGGTGTATCCCCTTGGGGCTGCTGTTCTGGTCTGCGGATCCCAAGGCTACC
 TCCTGCCCAACGTCCTCTTAGAGGAGCTGCTCAGCAAATACCAGCACACGAGTCTCACTCCCGGGT
 CCGCAGAGCCATCCCCAGGGAGGACAAGGAGGAGATCCTCATGCTGCACAACAAGCTTCGGGGCCAGGTG
 CAGCCTCAGGCCTCCAACATGGAGTACATGACCTGGGATGACGAACTGGAGAAGTCTGCTGCAGCGTGGG
 CCAGTCAGTGCATCTGGGAGCACGGGCCACCAGTCTGCTGGTGTCCATCGGGCAGAACCTGGGCGCTCA
 CTGGGGCAGGTATCGCTCTCCGGGGTTCATGTGACGCTCTGGTATGACGAGGTGAAGGACTACACCTAC
 CCCTACCCGAGCGAGTGAACCCCTGGTGTCCAGAGAGGTGCTCGGGCCTATGTGCACGCACTACACAC
 AGATAGTTTGGGCCACCACAAGATCGTTGTGCTGTGAACACCTGCCGGAAGTACTGTCTGGGG
 AGAAGTTTGGGAGAACCGGGTCTACTTTGTCTGCAATTATCTCAAAGGGGAAGTGGATTGGAGAAGCC
 CCTACAAGAATGGCCGGCCTGCTCTGAGTGCCACCCAGCTATGGAGGAGCTGCAGGAACAACCTGT
 GTTACCGAGAAGAACTACACTCCAAAACCTGAAACGGACGAGATGAATGAGGTGGAAACGGCTCCCAT
 TCCTGAAGAAAACCATGTTTGGCTCCAACCGAGGGTGTGAGACCCACCAAGCCAAAGAAAACCTCTGCG
 GTCAACTACATGACCCAAGTCTGTCAGATGTGACACCAAGTGAAGGACAGGTGCAAAGGGTCCACGTGTA
 ACAGGTACCAGTGCCAGCAGGCTGCCTGAACCACAAGGCGAAGATCTTTGGAAGTCTGTTCTATGAAA
 CTCGTCTAGCATATGCCGCGCCCATCCACTACGGGATCCTGGATGACAAGGGAGGCTGGTGGATATC
 ACCAGGAACGGGAAGGTCCCCTTCTCGTGAAGTCTGAGAGACACGGCGTGCAGTCCCTCAGCAAATACA
 AACCTCCAGCTCATTGATGGTGTCAAAGTCAAAGTGCAGGATTTGGACTGCTACACGACCGTTGCTCA
 GCTGTGCCCGTTTGAAGGAGCAGCAACTACTGCCAAGAATCCATTGTCCGGCACACTGCAAAGACGAA
 CCTTCTACTGGGCTCCGGTGTGGAACCAACATCTATGCAGTACCTCAAGCATCTGCAAGACAGCTG
 TGCACGCGGGAGTCATCAGCAACGAGAGTGGGGTACGCTGGACGTGATGCCCGTGGATAAAAAGAAGAC
 CTACGTGGGCTCGCTCAGGAATGGAGTTCAGTCTGAAAGCCTGGGGACTCCTCGGGATGGAAGGCCCTC
 CGGATCTTTGCTGTCAGGCAG

ACGCGTACGCGGCCGCTCGAGCAGAACTCATCTCAGAAGAGGATCTGGCAGCAAATGATATCCTGGATT
 ACAAGGATGACGACGATAAGGTTTAA

Protein Sequence:

>RC214912 representing NM_031476
 Red=Cloning site Green=Tags(s)

MSCVLGGVIPLGLLFLVCGSQYLLPNVTLLLEELL SKYQHNEHSRVRRAIPREDKEEILMLHNKLRGQV
 QPQASNMEYMTWDELEKSAAAWASQCIWEHGPTSLLVSIGQNLGAHWGRYRSPGFHVQSWYDEVKDYTY
 PYPSECNPWPCPERCSGPMCTHYTQIVWATTNKIGCAVNTCRKMTVWGEVWENAVYFVFNYSFKGNWIGEA
 PYKNGRPCSECPPSYGGSCRNNLCYREETYTPKPTDEMNEVETAPIPEENHVWLQPRVMRPTKPKKTS
 VNYMTQVVRCDTKMKDRCKGSTCNRYQCPAGLNHKAKIFGSLFYESSSSICRAAIHYGILDGKGLVDI
 TRNGKVPFFVKSERHGVQSLSKYKPSFSFMVSKVKVQDLDCYTTVAQLCPFEKPATHCPRIHCPAHCKDE
 PSYWAPVFGTNIYADTSSICKTAVHAGVISNESGGDVPVDDKKTIVGSLRNGVQSESLGTPRDGKAF
 RIFAVRQ

TRTRPLEQKLISEEDLAANDILDYKDDDDKV

Chromatograms:

https://cdn.origene.com/chromatograms/mg3842_d09.zip

Restriction Sites:

Sgfl-Mlul

Cloning Scheme:


ACCN: NM_031476

ORF Size: 1491 bp

OTI Disclaimer: Due to the inherent nature of this plasmid, standard methods to replicate additional amounts of DNA in E. coli are highly likely to result in mutations and/or rearrangements. Therefore, OriGene does not guarantee the capability to replicate this plasmid DNA. Additional amounts of DNA can be purchased from OriGene with batch-specific, full-sequence verification at a reduced cost. Please contact our customer care team at custsupport@origene.com or by calling 301.340.3188 option 3 for pricing and delivery.

The molecular sequence of this clone aligns with the gene accession number as a point of reference only. However, individual transcript sequences of the same gene can differ through naturally occurring variations (e.g. polymorphisms), each with its own valid existence. This clone is substantially in agreement with the reference, but a complete review of all prevailing variants is recommended prior to use. [More info](#)

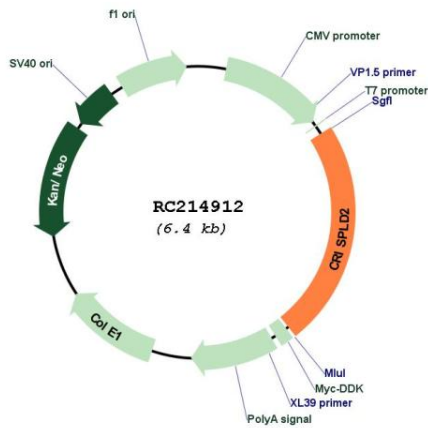
OTI Annotation: This clone was engineered to express the complete ORF with an expression tag. Expression varies depending on the nature of the gene.

Components: The ORF clone is ion-exchange column purified and shipped in a 2D barcoded Matrix tube containing 10ug of transfection-ready, dried plasmid DNA (reconstitute with 100 ul of water).

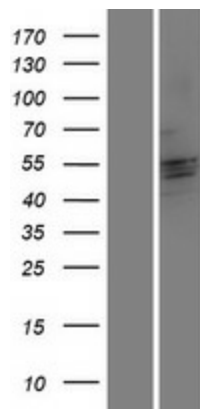
- Reconstitution Method:**
1. Centrifuge at 5,000xg for 5min.
 2. Carefully open the tube and add 100ul of sterile water to dissolve the DNA.
 3. Close the tube and incubate for 10 minutes at room temperature.
 4. Briefly vortex the tube and then do a quick spin (less than 5000xg) to concentrate the liquid at the bottom.
 5. Store the suspended plasmid at -20°C. The DNA is stable for at least one year from date of shipping when stored at -20°C.

RefSeq: [NM_031476.4](#)
RefSeq Size: 4574 bp
RefSeq ORF: 1494 bp
Locus ID: 83716
UniProt ID: [Q9H0B8](#)
Cytogenetics: 16q24.1
Domains: SCP, LCCL
Protein Families: Secreted Protein, Transmembrane
MW: 55.7 kDa
Gene Summary: Promotes matrix assembly.[UniProtKB/Swiss-Prot Function]

Product images:



Circular map for RC214912



Western blot validation of overexpression lysate (Cat# [LY410482]) using anti-DDK antibody (Cat# [TA50011-100]). Left: Cell lysates from untransfected HEK293T cells; Right: Cell lysates from HEK293T cells transfected with RC214912 using transfection reagent MegaTran 2.0 (Cat# [TT210002]).