

Product datasheet for **RC214907**

Cytokeratin 14 (KRT14) (NM_000526) Human Tagged ORF Clone

Product data:

Product Type:	Expression Plasmids
Product Name:	Cytokeratin 14 (KRT14) (NM_000526) Human Tagged ORF Clone
Tag:	Myc-DDK
Symbol:	Cytokeratin 14
Synonyms:	CK14; EBS3; EBS4; K14; NFJ
Mammalian Cell Selection:	Neomycin
Vector:	pCMV6-Entry (PS100001)
E. coli Selection:	Kanamycin (25 ug/mL)



[View online »](#)

ORF Nucleotide Sequence:

>RC214907 representing NM_000526
 Red=Cloning site Blue=ORF Green=Tags(s)

TTTTGTAATACGACTCACTATAGGGCGGCCGGAATTCGTCGACTGGATCCGGTACCGAGGAGATCTGCC
 GCC**GCGATCGCC**

ATGACTACCTGCAGCCGCGAGTTCACCTCCTCCAGCTCCATGAAGGGCTCCTGCGGCATCGGGGGCGCA
 TCGGGGGCGGCTCCAGCCGCATCTCCTCCGTCTGGCCGGAGGGTCTGCCGCGCCCCAGCACCTACGG
 GGGCGGCCTGTCTGTCTCATCTCCCGCTTCTCCTCTGGGGGAGCCTACGGGCTGGGGGGCGCTATGGC
 GGTGGCTTCAGCAGCAGCAGCAGCTTTGGTAGTGGCTTTGGGGGAGGATATGGTGGTGGCCTTGGTG
 CTGGCTTGGTGGTGGCTTTGGTGGTGGCTTTGCTGGTGGTGTGGGCTTCTGGTGGCAGTGAGAAGGT
 GACCATGCAGAACCTCAATGACCGCTGGCCTCTACCTGGACAAGGTGCGTGCTCTGGAGGAGGCCAAC
 GCCGACCTGGAAGTGAAGATCCGTGACTGGTACCAGAGGCAGCGGCTGCTGAGATCAAAGACTACAGTC
 CCTACTTCAAGACCATTGAGGACCTGAGGAACAAGATTCTCACAGCCACAGTGGACAATGCCAATGTCT
 TCTGCAGATTGACAATGCCCGTCTGGCCGCGGATGACTCCGCACCAAGTATGAGACAGAGTTGAACCTG
 CGCATGAGTGTGAAGCCGACATCAATGGCCTGCGCAGGGTGTGGACGAACTGACCCTGGCCAGAGCTG
 ACCTGGAGATGCAGATTGAGAGCCTGAAGGAGGAGCTGGCCTACCTGAAGAAGAACCACGAGGAGGAGAT
 GAATGCCCTGAGAGGCCAGGTGGGTGGAGATGTCAATGTGGAGATGGACGCTGCACCTGGCGTGGACCTG
 AGCCGCATTCTGAACGAGATGCGTGACCAAGTATGAGAAGTGGCAGAGAAGAACCGAAGGATGCCGAGG
 AATGGTTCTTACCAAGACAGAGGAGCTGAACCGCAGGTGGCCACCAACAGCGAGCTGGTGCAGAGCGG
 CAAGAGCGAGATCTCGGAGCTCCGGCGCACCATGCAGAACCTGGAGATTGAGTGCAGTCCCAGCTCAGC
 ATGAAAGCATCCCTGGAGAACAGCCTGGAGGAGACCAAGGTGCTACTGCATGCAGTGGCCAGATCC
 AGGAGATGATTGGCAGCTGGAGGAGCAGCTGGCCAGCTCCGCTGCGAGATGGAGCAGCAGAACCAGGA
 GTACAAGATCCTGCTGGACGTGAAGACGCGGCTGGAGCAGGAGATCGCCACCTACCGCCGCTGCTGGAG
 GCGAGGACGCCACCTCTCCTCCTCCAGTTCTCCTCTGGATCGCAGTCATCCAGAGATGTGACCTCCT
 CCAGCCGCCAAATCCGCACCAAGGTCATGGATGTGCACGATGGCAAGGTGGTGTCCACCCACGAGCAGGT
 CCTTCGCACCAAGAAC

ACGCGTACGCGGCCGCTCGAGCAGAACTCATCTCAGAAGAGGATCTGGCAGCAAATGATATCCTGGATT
 ACAAGGATGACGACGATAAGGTTTAA

Protein Sequence:

>RC214907 representing NM_000526
 Red=Cloning site Green=Tags(s)

MTTCSRQFTSSSSMKGSCGIGGGIGGGSSRISSVLAGGSCRAPSTYGGGLSVSSSRFSSGGAYLGGGYG
 GGFSSSSSFSGFGGGYGGGLGAGLGGFGGGFAGGDGLLVGSEKVTMQNLNDRLASYLDKVRALEEAN
 ADLEVKIRDWYQRQPAEIKDYSPYFKTIEDLRNKILTATVDNANVLLQIDNARLAADDFRTKYETELNL
 RMSVEADINGLRVLDLTLARADLEMQIESLKEELAYLKNHEEEMNALRGQVGGDVNVEMDAAPGVDL
 SRILNEMRDQYEKMAEKNRKAEEWFFTKTEELNREVATNSELVQSGKSEISELRRTMQNLIEIQLSLS
 MKASLENSLEETKGRYCMQLAQIQEMIGSVEEQLAQLRCEMEQQNQEYKILLDVKTRLEQEIATYRRLLE
 GEDAHLSQQFSSGSQSRDVTSSSRQIRTKVMDVHDGKVVSTHEQVLRITKN

TRTRPLEQKLISEEDLAANDILDYKDDDDKV

Chromatograms:

https://cdn.origene.com/chromatograms/mk6248_d12.zip

Restriction Sites:

Sgfl-Mlul

Cloning Scheme:

ACCN: NM_000526

ORF Size: 1416 bp

OTI Disclaimer: The molecular sequence of this clone aligns with the gene accession number as a point of reference only. However, individual transcript sequences of the same gene can differ through naturally occurring variations (e.g. polymorphisms), each with its own valid existence. This clone is substantially in agreement with the reference, but a complete review of all prevailing variants is recommended prior to use. [More info](#)
OTI Annotation: This clone was engineered to express the complete ORF with an expression tag. Expression varies depending on the nature of the gene.

Components: The ORF clone is ion-exchange column purified and shipped in a 2D barcoded Matrix tube containing 10ug of transfection-ready, dried plasmid DNA (reconstitute with 100 ul of water).

- Reconstitution Method:**
1. Centrifuge at 5,000xg for 5min.
 2. Carefully open the tube and add 100ul of sterile water to dissolve the DNA.
 3. Close the tube and incubate for 10 minutes at room temperature.
 4. Briefly vortex the tube and then do a quick spin (less than 5000xg) to concentrate the liquid at the bottom.
 5. Store the suspended plasmid at -20°C. The DNA is stable for at least one year from date of shipping when stored at -20°C.

RefSeq: [NM_000526.3](#), [NP_000517.2](#)
RefSeq Size: 1634 bp

RefSeq ORF: 1419 bp

Locus ID: 3861

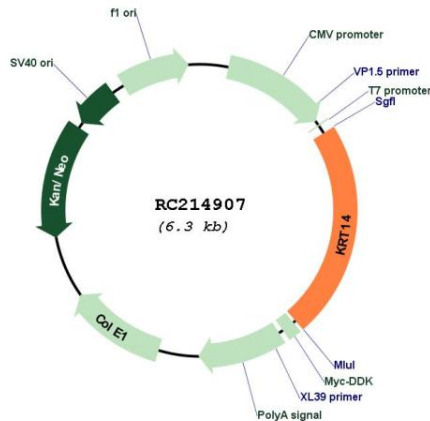
UniProt ID: [P02533](#)
Cytogenetics: 17q21.2

Domains: filament

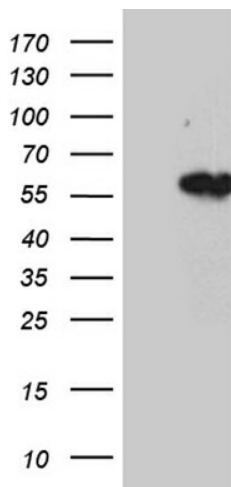
MW: 51.4 kDa

Gene Summary: This gene encodes a member of the keratin family, the most diverse group of intermediate filaments. This gene product, a type I keratin, is usually found as a heterotetramer with two keratin 5 molecules, a type II keratin. Together they form the cytoskeleton of epithelial cells. Mutations in the genes for these keratins are associated with epidermolysis bullosa simplex. At least one pseudogene has been identified at 17p12-p11. [provided by RefSeq, Jul 2008]

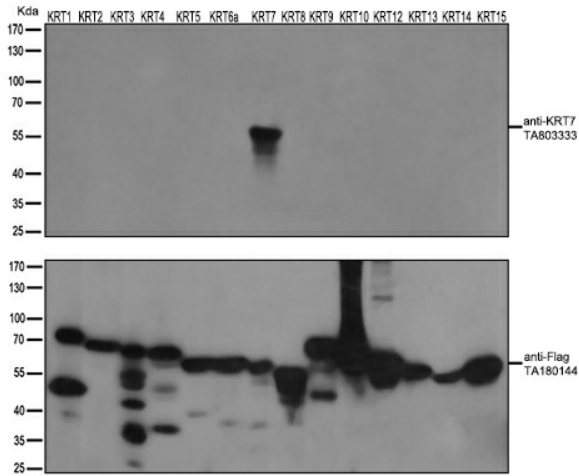
Product images:



Circular map for RC214907



HEK293T cells were transfected with the pCMV6-ENTRY control (Cat# [PS100001], Left lane) or pCMV6-ENTRY KRT14 (Cat# RC214907, Right lane) cDNA for 48 hrs and lysed. Equivalent amounts of cell lysates (5 ug per lane) were separated by SDS-PAGE and immunoblotted with anti-KRT14 (Cat# [TA803190])(1:500).



HEK293T cells were transfected with the overexpression plasmids of 14 KRT isoforms (from left to right: KRT1, Cat# [RC223146]; KRT2, Cat# [RC213030]; KRT3, Cat# [RC223011]; KRT4, Cat# [RC220350]; KRT5, Cat# [RC206870]; KRT6a, Cat# [RC204328]; KRT7, Cat# [RC201124]; KRT8, Cat# [RC209570]; KRT9, Cat# [RC218091]; KRT10, Cat# [RC204500]; KRT12, Cat# [RC224946]; KRT13, Cat# [RC201179]; KRT14, Cat# RC214907; KRT15, Cat# [RC201150]) for 48 hrs and lysed. Equivalent amounts of cell lysates (5 ug per lane) were separated by SDS-PAGE and immunoblotted with anti-flag antibody (Cat# [TA180144], 1:1000) or anti-KRT7 mouse monoclonal antibody (Cat# [TA803333], 1:500).