

Product datasheet for **RC214897**

alpha Adducin (ADD1) (NM_176801) Human Tagged ORF Clone

Product data:

Product Type:	Expression Plasmids
Product Name:	alpha Adducin (ADD1) (NM_176801) Human Tagged ORF Clone
Tag:	Myc-DDK
Symbol:	alpha Adducin
Synonyms:	ADDA
Mammalian Cell Selection:	Neomycin
Vector:	pCMV6-Entry (PS100001)
E. coli Selection:	Kanamycin (25 ug/mL)



[View online »](#)

ORF Nucleotide
Sequence:

>RC214897 representing NM_176801
 Red=Cloning site Blue=ORF Green=Tags(s)

TTTTGTAATACGACTCACTATAGGGCGGCCGGAATTCGTCGACTGGATCCGGTACCGAGGAGATCTGCC
 GCCGCGATCGCC

ATGAATGGTGATTCTCGTCTGCGGTGGTGACCTCACCACCCCGACCACAGCCCTCACAAGGAGAGGT
 ACTTCGACCGAGTAGATGAGAACAACCCAGAGTACTTGAGGGAGAGGAACATGGCACCAGACCTTCGCCA
 GGACTTCAACATGATGGAGCAAAAAGAAGAGGGTGTCCATGATTCTGCAAAAGCCCTGCTTTCTGTGAAGAA
 TTGGAATCAATGATACAGGAGCAATTTAAGAAGGGGAAGAACCCACAGGCCTATTGGCATTACAGCAGA
 TTGCAGATTTTATGACCACGAATGTACCAATGTCTACCCAGCAGCTCCGCAAGGAGGGATGGCTGCCTT
 AAACATGAGTCTTGGTATGGTGACTCCTGTGAACGATCTTAGAGGATCTGATTCTATTGCGTATGACAAA
 GGAGAGAAGTTATTACGGTGTAAATTGGCAGCGTTTTATAGACTAGCAGATCTCTTTGGGTGGTCTCAGC
 TTATCTACAATCATATCACAACCAGAGTGAACCTCCGAGCAGGAACACTTCCTCATTGTCCCTTTGGGCT
 TCTTTACAGTGAAGTACTGCATCCAGTTTGGTTAAGATCAATCTACAAGGAGATATAGTAGATCGTGGA
 AGCACTAATCTGGGAGTGAATCAGGCCGCTTACACTTACACTCTGCAATTTATGCTGCACGCCCGGACG
 TGAAGTGCCTGCTGCACATTCACACCCAGCAGGGCTGCGGTCTCTGCAATGAAATGTGGCCTCTTGCC
 AATCTCCCGGAGGCGCTTCCCTTGGAGAAGTGGCTTATCATGACTACCATGGCATTCTGGTTGATGAA
 GAGGAAAAAGTTTTGATTAGAAAAATCTGGGGCCTAAAAGCAAGTTCTTATTCTCCGGAACCATGGGC
 TCGTGTCAAGTGGAGAGAGCGTTGAGGAGGCTTCTATTACATCCATAACCTTGTGGTGGCTGTGAGAT
 CCAGGTTCAACTCTGGCCAGTGCAGGAGGACCAGACACTTGTCTGCTGAATCCTGAGAAGTACAAA
 GCCAAGTCCCGTCCCGAGGCTCCGGTAGGGGAAGGCACTGGATCGCTCCCAAGTGGCAGATTGGTG
 AGCAGGAATTTGAAGCCCTCATGCGGATGCTCGATAATCTGGGCTACAGAAGTGGTACCCTTATCGATA
 CCCTGCTCTGAGAGAGAAGTCTAAAAAATACAGCGATGTGGAGGTTCTGCTAGTGTACAGGTTACTCC
 TTTGCTAGTGACGGTGATTCGGGCACTTCTCCCACTCAGACACAGTTTTCAGAAGCAGCAGCGGGAGA
 AGACAAGATGGCTGAACTCTGGCCGGGCGACGAAGCTTCCGAGGAAGGGCAGAATGGAAGCAGTCCCAA
 GTCGAAGACTAAGGTGTGGACGAACATTACACACGATCACGTGAAACCCTTGTGTCAGTCTCTCTCGTCC
 GGTGTCTGCGTGCCAAGCTGTATTACCAACTGCTTGTGGACTAAAGAGGATGGACATAGAAGTCCACCT
 CTGCTGTCCCTAACCTGTTTGTCCATTGAACACTAACCCAAAAGAGTCCAGGAGATGAGGAACAAGAT
 CCGAGAGCAGAATTTACAGGACATTAAGACGGCTGGCCCTCAGTCCAGGTTTTGTGGTGTAGTGATG
 GACAGGAGCCTCGTCCAGGGAGAGCTGGTGACGGCTCCAAGGCCATCATTGAAAAGGAGTACCAGCCCC
 ACGTCATTGTGAGCACCAGGGCCCAACCCCTTACCACACTCAGACCGTGAGCTGGAGGAGTACCG
 CAGGGAGGTGGAGAGGAAGCAGAAGGGCTCTGAAGAGAATCTGGACGAGGCTAGAGAACGAAAAGAAAAG
 AGTCTCCAGACCAGCTGCGGTCCCCACCCGCTCCAGCACTCCCATCAAGCTGGAGGAAGGAGACG
 GATGCGCTAGAGAGTACCTGTTACCC

ACGCGTACGCGGCCGCTCGAGCAGAACTCATCTCAGAAGAGGATCTGGCAGCAATGATATCCTGGATT
 ACAAGGATGACGACGATAAGGTTTAA

Protein Sequence: >RC214897 representing NM_176801
 Red=Cloning site Green=Tags(s)

MNGDSRAAVVTSPPPTTAPHKERYFDRVDENNPEYLRRNMAPDLRQDFNMMEQKKRVSMILQSPAFCEE
 LESMIQEQFKGKNPTGLLALQQIADFMTTNVNVYPAAPQGGMAALNMSLGMVTPVNDLRGSDSIAYDK
 GEKLLRCKLAIFYRLADLFGWSQLIYNHITTRVNSEQEHFLIVPFGLLYSEVTASSLVKINLQGDIVDRG
 STNLGVNQAGFTLHSAIYAARPDVKCVVHIHTPAGAAVSAMKCGLLPISPEALSLGEVAYHDYHGILVDE
 EEKVLIQKNLGPVSKVLILRNHGLVSVGESVEEAFYYIHNLVVACEIQVRTLASAGPDNLVLLNPEKYK
 AKSRSPGSPVGEVGTGSPPKWQIGEQEFALMRMLDNLGYRTGYPYRYPALREKSKKYSDEVVPASVTGYS
 FASDGDGSGTCSPLRHSFQKQREKTRWLNNSGRGDEASEEGQNGSSPKSKTKVWNTNITHDHVKPLQLSLS
 GVCVPSCITNCLWTKEDGHRTSTSAVPLNFVPLNTPKEVQEMRNKIREQNLQDIKTAGPQSQVLCGVVM
 DRSLVQGELVTASKAIIIEKEYQPHVIVSTTGPNPFTLLTDRELEEYRREVERKQKGEENLDEAREQKEK
 SPPDQPAVPHPPPSTPIKLEEGDGCAREYLLP

TRTRPLEQKLISEEDLAANDILDYKDDDDKV

Chromatograms: https://cdn.origene.com/chromatograms/mk6718_e04.zip

Restriction Sites: SgfI-MluI

Cloning Scheme:



ACCN: NM_176801

ORF Size: 1986 bp

OTI Disclaimer: The molecular sequence of this clone aligns with the gene accession number as a point of reference only. However, individual transcript sequences of the same gene can differ through naturally occurring variations (e.g. polymorphisms), each with its own valid existence. This clone is substantially in agreement with the reference, but a complete review of all prevailing variants is recommended prior to use. [More info](#)

OTI Annotation: This clone was engineered to express the complete ORF with an expression tag. Expression varies depending on the nature of the gene.

Components: The ORF clone is ion-exchange column purified and shipped in a 2D barcoded Matrix tube containing 10ug of transfection-ready, dried plasmid DNA (reconstitute with 100 ul of water).

Reconstitution Method:

1. Centrifuge at 5,000xg for 5min.
2. Carefully open the tube and add 100ul of sterile water to dissolve the DNA.
3. Close the tube and incubate for 10 minutes at room temperature.
4. Briefly vortex the tube and then do a quick spin (less than 5000xg) to concentrate the liquid at the bottom.
5. Store the suspended plasmid at -20°C. The DNA is stable for at least one year from date of shipping when stored at -20°C.

RefSeq: [NM_176801.2](#)

RefSeq Size: 4068 bp

RefSeq ORF: 1989 bp

Locus ID: 118

UniProt ID: [P35611](#)

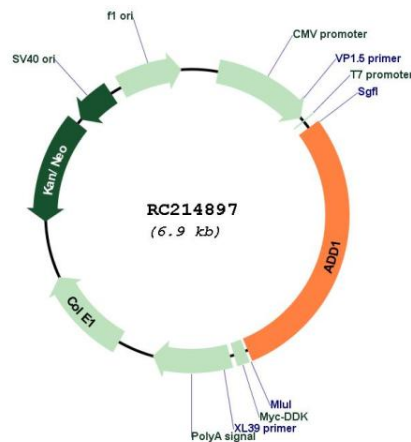
Cytogenetics: 4p16.3

Protein Families: Druggable Genome

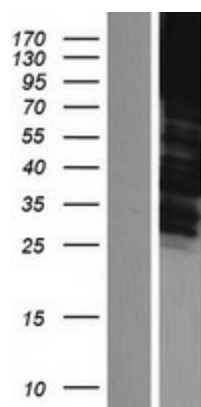
MW: 73.2 kDa

Gene Summary: Adducins are a family of cytoskeletal proteins encoded by three genes (alpha, beta, and gamma). Adducin acts as a heterodimer of the related alpha, beta, or gamma subunits. The protein encoded by this gene represents the alpha subunit. Alpha- and beta-adducin include a protease-resistant N-terminal region and a protease-sensitive, hydrophilic C-terminal region. Adducin binds with high affinity to Ca(2+)/calmodulin and is a substrate for protein kinases A and C. [provided by RefSeq, Aug 2017]

Product images:



Circular map for RC214897



Western blot validation of overexpression lysate (Cat# [LY406127]) using anti-DDK antibody (Cat# [TA50011-100]). Left: Cell lysates from untransfected HEK293T cells; Right: Cell lysates from HEK293T cells transfected with RC214897 using transfection reagent MegaTran 2.0 (Cat# [TT210002]).