

## Product datasheet for **RC214895**

### **GALNT10 (NM\_017540) Human Tagged ORF Clone**

#### Product data:

Product Type:	Expression Plasmids
Product Name:	GALNT10 (NM_017540) Human Tagged ORF Clone
Tag:	Myc-DDK
Symbol:	GALNT10
Synonyms:	DKFZp586H0623; FLJ00205; FLJ11715; GalNAcT10; pp-GalNAc-T10
Mammalian Cell Selection:	Neomycin
Vector:	pCMV6-Entry (PS100001)
E. coli Selection:	Kanamycin (25 ug/mL)
ORF Nucleotide Sequence:	>RC214895 representing NM_017540 Red=Cloning site Blue=ORF Green=Tags(s)

TTTTGTAATACGACTCACTATAGGGCGGCCGGAATTCGTCGACTGGATCCGGTACCGAGGAGATCTGCC  
GCC**CGGATCGCC**

ATGCTGGCCTGGCGGGATGGTGAAGCAGAAACGTCATCCTCTCTTCTTCTTCCATGCAGG  
TGTGGATGTGTGGGGCCGCATGGAGGACATCCCCTGCTCCAGGGTGGCCATATCTACAGGAAGTATGT  
GCCCTACAAGTCCCAGCGGAGTCAGCCTGGCCGGAACCTTAAGCGGGTGGCCGAAGTGTGGATGGAT  
GAGTACGCAGAGTACATTTACCAGCGCCGGCCTGAATACCGCCACCTCTCCGCTGGGGATGTCGCAGTCC  
AGAAAAAGCTCCGAGCTCCCTTAACTGCAAGAGTTTCAAGTGGTTTATGACGAAGATAGCCTGGGACCT  
GCCCAAATCTACCCACCGTGGAGCCCCGGCTGCAGCTTGGGGGAGATCCGAAATGTGGGCACAGGG  
CTGTGTGCAGACAAAAGCACGGGGCTTGGGCTCCCCACTAAGGCTAGAGGGCTGCGTCCGAGGCCGCTG  
GGGAGGCTGCCTGGAACAACATGCAGGTATTCACCTTACCTGGAGAGAGGACATCCGGCCTGGAGACCC  
CCAGCACACCAAGAAGTTCTGCTTTGATGCCATTTCCACACCAGCCCTGTACGCTGTACGACTGCCAC  
AGCATGAAGGGCAACAGCTGTGGAAATACCGCAAAGACAAGACCCTGTACCACCTGTCACTGGCAGCT  
GCATGGACTGCAGTGAAGTGACCATAGGATCTTCATGAACACCTGCAACCCATCCTCTCTACCCAGCA  
GTGGCTGTTTGAACACACCAACTCAACAGTCTTGGAAAAATTCAATAGGAAC

**ACGCGT**ACGCGGCCGCTCGAGCAGAAACTCATCTCAGAAGAGGATCTGGCAGCAAATGATATCCTGGATT  
ACAAGGATGACGACGATAAGGTTTAA



[View online »](#)

**Protein Sequence:** >RC214895 representing NM\_017540

Red=Cloning site Green=Tags(s)

MLAWRDGELEAETSSSLFLLAMQVVMCGGRMEDIPCSRVGHIYRKYVPYKVPAGVSLARNLKRVAEVWMD  
EYAEYIYQRRPEYRHL SAGDVAVQKLRSSLNCKSFKWFMTKIAWDL PKFYPPVEPPAAAWGEIRNVGTG  
LCADTKHGALGSPLRLEGCVRGRGEAAWNMQVF FTTWREDIRPGDPQHTKKFCDAISHTSPVTLYDCH  
SMKGNQLWKYRKDKTLYHPVSGSCMDCSESDHRIFMNTCNPSSL TQQWLF EHTNSTVLEKFNRR

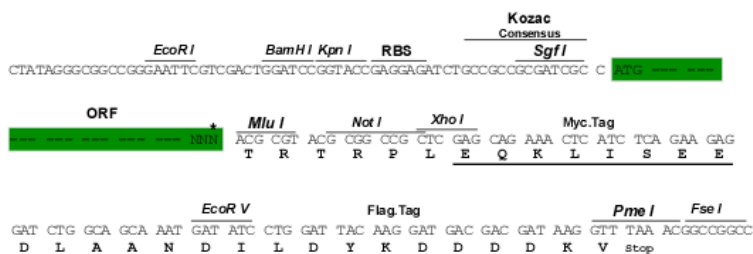
TRTRPLEQKLI SEEDLAANDILDYKDDDDKV

**Chromatograms:** [https://cdn.origene.com/chromatograms/mk8048\\_e10.zip](https://cdn.origene.com/chromatograms/mk8048_e10.zip)

**Restriction Sites:** SgfI-MluI

**Cloning Scheme:**

Cloning sites used for ORF Shuttling:



\* The last codon before the Stop codon of the ORF

**ACCN:** NM\_017540

**ORF Size:** 822 bp

**OTI Disclaimer:** The molecular sequence of this clone aligns with the gene accession number as a point of reference only. However, individual transcript sequences of the same gene can differ through naturally occurring variations (e.g. polymorphisms), each with its own valid existence. This clone is substantially in agreement with the reference, but a complete review of all prevailing variants is recommended prior to use. [More info](#)

**OTI Annotation:** This clone was engineered to express the complete ORF with an expression tag. Expression varies depending on the nature of the gene.

**Components:** The ORF clone is ion-exchange column purified and shipped in a 2D barcoded Matrix tube containing 10ug of transfection-ready, dried plasmid DNA (reconstitute with 100 ul of water).

**Reconstitution Method:**

1. Centrifuge at 5,000xg for 5min.
2. Carefully open the tube and add 100ul of sterile water to dissolve the DNA.
3. Close the tube and incubate for 10 minutes at room temperature.
4. Briefly vortex the tube and then do a quick spin (less than 5000xg) to concentrate the liquid at the bottom.
5. Store the suspended plasmid at -20°C. The DNA is stable for at least one year from date of shipping when stored at -20°C.

**RefSeq:** [NM\\_017540.3](#), [NP\\_060010.3](#)

**RefSeq Size:** 4361 bp

**RefSeq ORF:** 824 bp

**Locus ID:** 55568

**Cytogenetics:** 5q33.2

**Domains:** RICIN

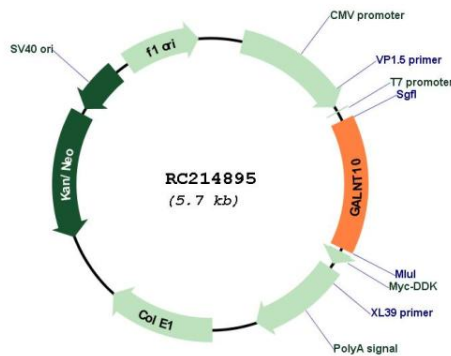
**Protein Families:** Transmembrane

**Protein Pathways:** Metabolic pathways, O-Glycan biosynthesis

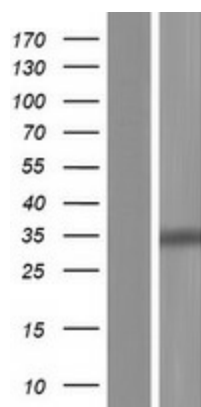
**MW:** 31.4 kDa

**Gene Summary:** This gene encodes a member of the GalNAc polypeptide N-acetylgalactosaminyltransferases. These enzymes catalyze the first step in the synthesis of mucin-type oligosaccharides. These proteins transfer GalNAc from UDP-GalNAc to either serine or threonine residues of polypeptide acceptors. The protein encoded by this locus may have increased catalytic activity toward glycosylated peptides compared to activity toward non-glycosylated peptides. [provided by RefSeq, Apr 2010]

### Product images:



Circular map for RC214895



Western blot validation of overexpression lysate (Cat# [LY413728]) using anti-DDK antibody (Cat# [TA50011-100]). Left: Cell lysates from untransfected HEK293T cells; Right: Cell lysates from HEK293T cells transfected with RC214895 using transfection reagent MegaTran 2.0 (Cat# [TT210002]).