

Product datasheet for **RC214890**

SLC9A1 (NM_003047) Human Tagged ORF Clone

Product data:

Product Type:	Expression Plasmids
Product Name:	SLC9A1 (NM_003047) Human Tagged ORF Clone
Tag:	Myc-DDK
Symbol:	SLC9A1
Synonyms:	APNH; LIKNS; NHE-1; NHE1; PPP1R143
Mammalian Cell Selection:	Neomycin
Vector:	pCMV6-Entry (PS100001)
E. coli Selection:	Kanamycin (25 ug/mL)



[View online »](#)

ORF Nucleotide
Sequence:

>RC214890 representing NM_003047
 Red=Cloning site Blue=ORF Green=Tags(s)

TTTTGTAATACGACTCACTATAGGGCGGCCGGAATTCGTCGACTGGATCCGGTACCGAGGAGATCTGCC
 GCC**CGGATCGCC**

ATGGTTCTGCGGTCTGGCATCTGTGGCCTCTCCACATCGGATCTTCCCTTCTTACTCGTGGTGGTCCG
 CTTTGGTGGGGCTGCTGCCTGTTCTCAGGAGCCATGGCCTCCAGCTCAGCCCAACTGCCAGCACCATTCCG
 AAGCTCAGAGCCACCACGAGAACGCTCGATTGGGGATGTCACCACCGCTCCACCGGAGGTACCCCCAGAG
 AGCCGCCCTGTTAATCATTCCGTCATGATCATGGCATGAAGCCGCGCAAGGCCTTCCAGTCTGGGCA
 TCGACTACACACAGTGCACACCCCTTCGAGATCTCCCTCTGGATCCTTCTGGCCTGCCTCATGAAGAT
 AGGTTTCCATGTGATCCCCTACTCTCAAGCATCGTCCCGGAGAGCTGCCTGCTGATCGTGGTGGGGCTG
 CTGGTGGGGGGCCTGATCAAGGGTGTAGGCGAGACACCCCTTCTGCAGTCCGACGCTTCTTCTCTCT
 TCCTGCTGCCGCCATCATCTGGATGCGGGCTACTTCTGCCACTGCGGCAGTTCACAGAAAACCTGGG
 CACCATCTGATCTTTGCCGTGGTGGGCACGCTGTGGAACGCCTTCTTCTGGGGCCCTCATGTACGCC
 GTGTGCCTGGTGGCGGTGAGCAGATCAACAACATCGGCCTCCTGGACAACCTGCCTTCCGCGAGCATCA
 TCTCGGCCGTGGACCCCGTGGCGGTTCTGGCTGTCTTTGAGGAAATTCACATCAATGAGCTGCTGCACAT
 CCTTGTTTTTGGGGAGTCTTGCTCAATGACGCCGTCACTGTGGTCTGTATCACCTCTTTGAGGAGTTT
 GCCAACTACGAACACGTGGGCATCGTGGACATCTTCTCGGCTTCTGAGCTTCTTCTGGTGGCCCTGG
 GCGGGGTGCTTGTGGCGTGGTCTACGGGGTATCGCAGCCTTCACTCCCGATTACCTCCCACATCCG
 GGTATCGAGCCGCTCTTCGCTTCTCTACAGCTACATGGCCTACTTGTGAGCCGAGCTTCCACCTG
 TCAGGCATCATGGCGCTCATAGCCTCAGGAGTGGTGTGCGCCCTATGTGGAGGCCAACATCTCCACACA
 AGTCCCACACCACCAATAACTTCTGAAGATGTGGAGCAGCGTCAGCGAGACCTCATCTTCTATCTT
 CCTCGGGCTCTCCACGGTGGCGGCTCCCACTGGAACCTGGACCTTCTGTCATCAGCACCTGCTCTTC
 TGCCATCGCCCGGTGCTGGGGTGTGGGCCTGACCTGGTTCATCAACAAGTTCCGTATCGTGAAGC
 TGACCCCAAGGACAGTTCATCATCGCCTATGGGGCCTGCGAGGGGCCATCGCCTTCTCTGGGCTA
 CCTCTGGACAAGAAGCACTTCCCATGTGTGACCTGTTCTCACTGCCATCATCACTGTGATCTTCTTC
 ACCGTCTTTGTGAGGGCATGACCATTCGGCCCTGGTAGACCTGTTGGCTGTGAAGAAAAGCAAGAGA
 CGAAGCGCTCCATCAACGAAGAGATCCACACACAGTTCCTGGACCCTTCTGACAGGCATCGAAGACAT
 CTGTGGCCACTACGGTCAACCACTGGAAGGACAAGCTCAACCGGTTAATAAGAAATATGTGAAGAAG
 TGTCTGATAGCTGGCGAGCGCTCAAGGAGCCCACTGCTATTGCCTTCTACCACAAGATGGAGATGAAGC
 AGGCCATCGAGCTGGTGGAGAGCGGGGCATGGGCAAGATCCCTCTGCGTCTCCACCGTCTCCATGCA
 GAACATCCACCCAAGTCCCTGCCTCCGAGCGCATCCTGCCAGCACTGTCCAAGGACAAGGAGGAGGAG
 ATCCGCAAAATCCTGAGGAACAATTGCAGAAGACCAGGAGCGGCTGCGGTCTACAACAGACACACGC
 TGGTGGCAGACCCCTACGAGGAAGCCTGGAACCAAGATGCTGCTCCGAGGAGGAGGAGGAGGAGGAG
 GCAGAAGATCAACAACCTACCTGACGGTGCAGCCACAAGCTGGACTCACCCACCATGTCTCGGGCCCGC
 ATCGGCTCAGACCACTGGCCTATGAGCCGAAGGAGGACCTGCCTGTATCACCATCGACCCGGCTTCCC
 CGCAGTCAACCGAGTCTGTGGACCTGGTGAATGAGGAGCTGAAGGGCAAAGTCTTAGGGTTGAGCCGGGA
 TCCTGCAAAAGGTGGCTGAGGAGGACGAGGACGACGATGGGGGCATCATGATGCGGAGCAAGGAGACTTCG
 TCCCAGGAACCGACGATGTCTTACCCCGCGCCAGTGACAGCCCACTCCAGAGGATACAGCGCT
 GCCTCAGTGACCCAGGCCACACCTGAGCCTGGGGAGGAGAACCCTTCTCCCAAGGGGACG

ACGCGTACGCGGGCGCTCGAGCAGAACTCATCTCAGAAGAGGATCTGGCAGCAATGATATCCTGGATT
 ACAAGGATGACGACGATAAGGTTTAA

Protein Sequence: >RC214890 representing NM_003047
Red=Cloning site Green=Tags(s)

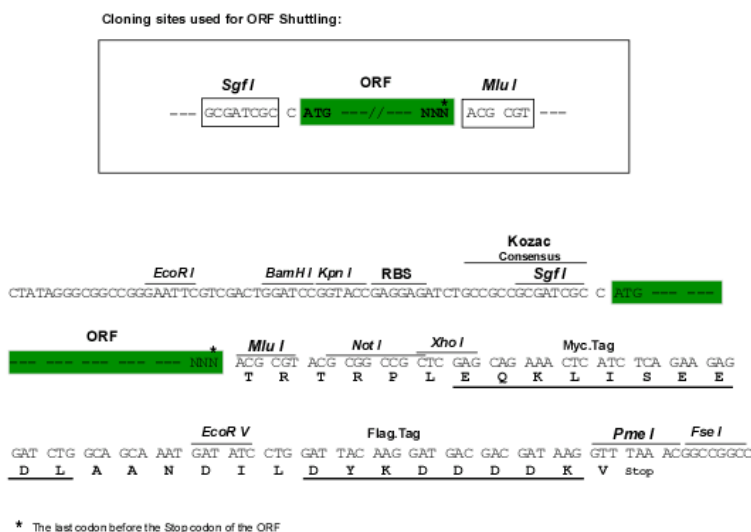
MVLRSGICGLSPHRIFPSLLVVVALVGLLPVLRSHGLQLSPTASTIRSSEPPRERSIGDVTTAPPEVTPE
SRPVNHSVTDHGMKPRKAFPVLGIDYTHVRTPFEISLWILLACLKIGFHVPTISSIVPESCLLIVVGL
LVGGLIKGVGETPPFLQSDVFFLFLPPIILDAGYFLPLRQFTENLGTILIFAVVGTLWNAFFLGGLMYA
VCLVGGEQINNIGLLDNLLFGSII SAVDPVAVLAVFEEIHINELLHILVFGESLLNDAVTVVLYHLFEF
ANYEHVGIVDIFLGFSLFFVVALGGVLGVVYGVIAAFTSRFTSHIRVIEPLFVFLYSYMAYLSAELFHL
SGIMALIASGVVMRPYVEANISHKSHTTIKYFLKMWSSVSETLIFIFLGVSTVAGSHHWNWTFVISTLLF
CL IARVLGVLGLTWFINKFRIVKLT PKDQFIIAYGGLRGAIAFSLGYLLDKKHFPMDLFLTAIITVIF
TVFVQGMTIRPLVDLLAVKKKQETKRSINEEIHTQFLDHL LTGIEDICGHYGHWHKDKLNRFNKKYVKK
CL IAGERSKEPQLIAFYHKMEMKQAIELVESGGMGKIPSAVSTVSMQNIHPKSLPSERILPALSKDKEE
IRKILRNNLQKTRQLRSYNRHTLVADPYEEAWNQMLLRRQKARLEQKINNYL TVPAHKLDSPTMSRAR
IGSDPLAYEPKEDLPVITIDPASPOSPESVDLVNEELKGKVLGLSRDPAKVAEEDDDGGIMMRKETS
SPGTDDVFTPAPSDSPSSQRIQRCLSDPGPHPEPGEPEFFPKGQ

TRTRPLEQKLI SEEDLAANDILDYKDDDDKV

Chromatograms: https://cdn.origene.com/chromatograms/mk6204_c06.zip

Restriction Sites: Sgfl-Mlul

Cloning Scheme:



ACCN: NM_003047

ORF Size: 2445 bp

OTI Disclaimer: The molecular sequence of this clone aligns with the gene accession number as a point of reference only. However, individual transcript sequences of the same gene can differ through naturally occurring variations (e.g. polymorphisms), each with its own valid existence. This clone is substantially in agreement with the reference, but a complete review of all prevailing variants is recommended prior to use. [More info](#)

OTI Annotation: This clone was engineered to express the complete ORF with an expression tag. Expression varies depending on the nature of the gene.

Components: The ORF clone is ion-exchange column purified and shipped in a 2D barcoded Matrix tube containing 10ug of transfection-ready, dried plasmid DNA (reconstitute with 100 ul of water).

Reconstitution Method:

1. Centrifuge at 5,000xg for 5min.
2. Carefully open the tube and add 100ul of sterile water to dissolve the DNA.
3. Close the tube and incubate for 10 minutes at room temperature.
4. Briefly vortex the tube and then do a quick spin (less than 5000xg) to concentrate the liquid at the bottom.
5. Store the suspended plasmid at -20°C. The DNA is stable for at least one year from date of shipping when stored at -20°C.

RefSeq: [NM_003047.5](#)

RefSeq Size: 4516 bp

RefSeq ORF: 2448 bp

Locus ID: 6548

UniProt ID: [P19634](#)

Cytogenetics: 1p36.11

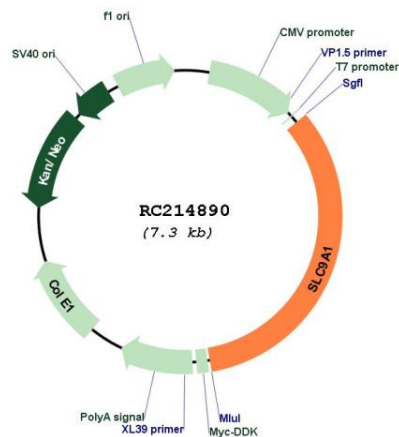
Protein Families: Druggable Genome, Transmembrane

Protein Pathways: Cardiac muscle contraction, Regulation of actin cytoskeleton

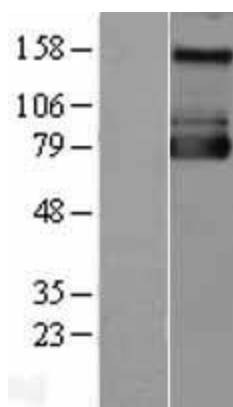
MW: 90.6 kDa

Gene Summary: This gene encodes a Na⁺/H⁺ antiporter that is a member of the solute carrier family 9. The encoded protein is a plasma membrane transporter that is expressed in the kidney and intestine. This protein plays a central role in regulating pH homeostasis, cell migration and cell volume. This protein may also be involved in tumor growth. [provided by RefSeq, Sep 2011]

Product images:



Circular map for RC214890



Western blot validation of overexpression lysate (Cat# [LY401064]) using anti-DDK antibody (Cat# [TA50011-100]). Left: Cell lysates from untransfected HEK293T cells; Right: Cell lysates from HEK293T cells transfected with RC214890 using transfection reagent MegaTran 2.0 (Cat# [TT210002]).