

Product datasheet for **RC214888**

FTHL17 (NM_031894) Human Tagged ORF Clone

Product data:

Product Type: Expression Plasmids
Product Name: FTHL17 (NM_031894) Human Tagged ORF Clone
Tag: Myc-DDK
Symbol: FTHL17
Synonyms: CT38
Mammalian Cell Selection: Neomycin
Vector: pCMV6-Entry (PS100001)
E. coli Selection: Kanamycin (25 ug/mL)
ORF Nucleotide Sequence: >RC214888 ORF sequence
Red=Cloning site Blue=ORF Green=Tags(s)

TTTTGTAATACGACTCACTATAGGGCGCCGGGAATTCGTCGACTGGATCCGGTACCGAGGAGATCTGCC
GCC**CGGATCGCC**

ATGGCCACCGCCAGCCGTCGCAGGTGCCGAGAGTACGACACCAACTGCGACGCCGCCATCAACAGCC
ACATCACGCTGGAGCTCTACACCTCCTACCTGTACCTGTCTATGGCCTTCTACTTCAACCGGGACGACGT
AGCCCTGGAGAATTCTCCGCTACTTCTGCGCCTGTCGGACGACAAAATGGAGCATGCCAGAAGCTG
ATGAGGCTGCAGAACCTGCGCGGTGGCCACATCTGCCTTACGATATCAGGAAGCCAGAGTGCCAAGGCT
GGGAGAGCGGGCTCGTGGCCATGGAGTCCGCTTCCACCTGGAGAAGAAGCTCAACCAGAGCCTGCTGGA
TCTGTACCAGCTGGCCGTGGAGAAGGGCGACCCCAAGCTGTGCCACTTCTGGAGAGCCACTACCTGCAC
GAGCAAGTCAAGACCATCAAAGAGCTGGGTGGCTACGTGAGCAACCTGCGCAAGATTTGTTCCCGGAAG
CCGGCCTGGCTGAGTACCTGTTCGACAAGCTCACCTGGCGGCCGCGTCAAAGAGACT

ACGCGTACGCGGCCGCTCGAGCAGAACTCATCTCAGAAGAGGATCTGGCAGCAAATGATATCCTGGATT
ACAAGGATGACGACGATAAGGTTTAA

Protein Sequence: >RC214888 protein sequence
Red=Cloning site Green=Tags(s)

MATAQPSQVRQKYDTNCDAAINSHITLLEYLSYLYLSMAFYFNRRDDVALENFFRYFLRLSDDKMEHAQKL
MRLQNLRGGHICLHDIRKPECQGWESGLVAMESAFHLEKNNVQSLLDLYQLAVEKGDPQLCHFLESHYLH
EQVKTIKELGGYVSNLRKICSPAEGLAEYLFDKLTLGGRVKET

TRTRPLEQKLISEEDLAANDILDYKDDDDKV

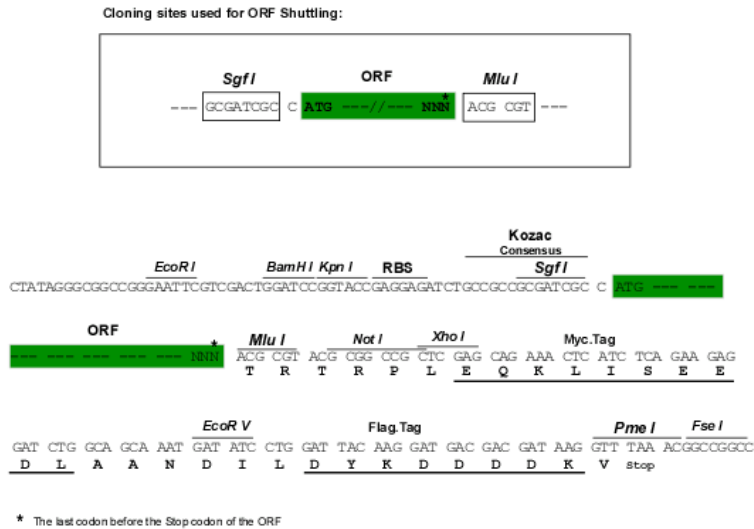
Chromatograms: https://cdn.origene.com/chromatograms/mk6474_b02.zip



[View online »](#)

Restriction Sites: SgfI-MluI

Cloning Scheme:



ACCN: NM_031894

ORF Size: 549 bp

OTI Disclaimer: The molecular sequence of this clone aligns with the gene accession number as a point of reference only. However, individual transcript sequences of the same gene can differ through naturally occurring variations (e.g. polymorphisms), each with its own valid existence. This clone is substantially in agreement with the reference, but a complete review of all prevailing variants is recommended prior to use. [More info](#)

OTI Annotation: This clone was engineered to express the complete ORF with an expression tag. Expression varies depending on the nature of the gene.

Components: The ORF clone is ion-exchange column purified and shipped in a 2D barcoded Matrix tube containing 10ug of transfection-ready, dried plasmid DNA (reconstitute with 100 ul of water).

Reconstitution Method:

1. Centrifuge at 5,000xg for 5min.
2. Carefully open the tube and add 100ul of sterile water to dissolve the DNA.
3. Close the tube and incubate for 10 minutes at room temperature.
4. Briefly vortex the tube and then do a quick spin (less than 5000xg) to concentrate the liquid at the bottom.
5. Store the suspended plasmid at -20°C. The DNA is stable for at least one year from date of shipping when stored at -20°C.

RefSeq: [NM_031894.3](#)

RefSeq Size: 830 bp

RefSeq ORF: 552 bp

Locus ID: 53940

UniProt ID: [Q9BXU8](#)

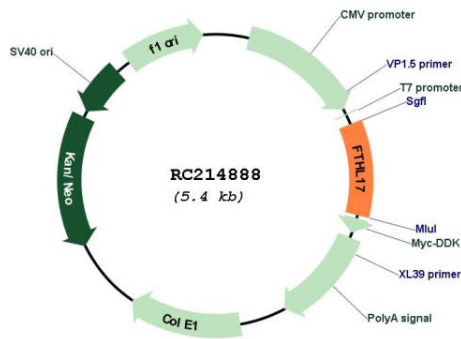
Cytogenetics: Xp21.2

Protein Families: Transmembrane

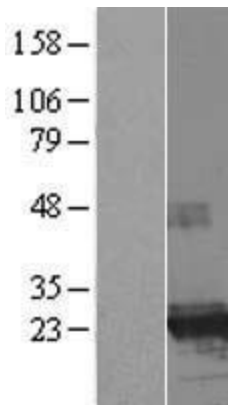
MW: 21.1 kDa

Gene Summary: This gene encodes a ferritin heavy chain-like protein. This gene is primarily expressed in embryonic germ cells. The encoded protein may lack ferroxidase activity. Multiple pseudogenes of this gene are found on chromosome X. [provided by RefSeq, Oct 2016]

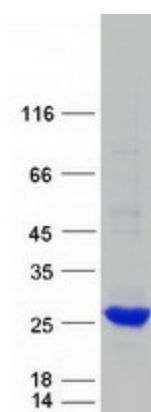
Product images:



Circular map for RC214888



Western blot validation of overexpression lysate (Cat# [LY410455]) using anti-DDK antibody (Cat# [TA50011-100]). Left: Cell lysates from untransfected HEK293T cells; Right: Cell lysates from HEK293T cells transfected with RC214888 using transfection reagent MegaTran 2.0 (Cat# [TT210002]).



Coomassie blue staining of purified FTHL17 protein (Cat# [TP314888]). The protein was produced from HEK293T cells transfected with FTHL17 cDNA clone (Cat# RC214888) using MegaTran 2.0 (Cat# [TT210002]).