

Product datasheet for RC214883

PLEKHG7 (NM_001037671) Human Tagged ORF Clone

Product data:

Product Type: Expression Plasmids
Product Name: PLEKHG7 (NM_001037671) Human Tagged ORF Clone
Tag: Myc-DDK
Symbol: PLEKHG7
Synonyms: C12orf74
Mammalian Cell Selection: Neomycin
Vector: pCMV6-Entry (PS100001)
E. coli Selection: Kanamycin (25 ug/mL)
ORF Nucleotide Sequence: >RC214883 ORF sequence
 Red=Cloning site Blue=ORF Green=Tags(s)

TTTTGTAATACGACTCACTATAGGGCGCCGGGAATTCGTCGACTGGATCCGGTACCGAGGAGATCTGCC
 GCC**CGATCGCC**

ATGGAGAAAACAGAGTCATTCTGTCCAGAGGTGCCACCCCAAGACTGTGGAGCCTCTCCTCGGCCCTCGC
 TGAGGAGCCTGCCAAGAACCAGGGGAGTCTCCTCAGTTTGACCGCAAGCCCCAGGCCGATCTCCAC
 CTCGCCACTTTGAGGAGATTAAGGACCCGTGGCTGTGGGACAAGGCAGGATGCCTGGCAGGTGACCACC
 TGGGGAAGCTGGGAGCTCCTGTGGCTTCCCATGTTACCTTTGAAGAGCCTGCCAGGAAGCCCAAGG
 ATTCTTACACTTGCTGTCAACCCTTGAGACTCCACTCAAGATTGACCTCTGAACCTGAAAGGCCCTGAA
 TGCAGCTGACTACTGGAGCCCCAACCCGGCCCACTGACAAGTATCTCCCTCCTGAGCTTCAGCCTGTC
 AATGAAGGGTCCCTTACCAGGCCCTCTTTCGGCAGCAAGAAGGCCACTTCTGCCAGCCCCACCTAC
 GACACCCTAGTCCTCAGGGAGAAGAATTGCACCCATCCAGGTGTGTATGCATTTATTTTCTCCGGTGCTA
 TGACATCTGT

ACGCGTACGCGGCCGCTCGAGCAGAACTCATCTCAGAAGAGGATCTGGCAGCAATGATATCCTGGATT
 ACAAGGATGACGACGATAAGGTTTAA

Protein Sequence: >RC214883 protein sequence
 Red=Cloning site Green=Tags(s)

MEKTESFCPEVPPQDCGASPRPSLRSLPKNQGSLLQFDRQAPGRISTPTLRLRTRGCGTRQDAWQVTT
 WGSWGAPVGFPCYLKSLPGSPKDSHLLSPLRLHSRLTSEPERALNAADSLEPQTRPTDKYLPPELQPV
 NEGSLHQASLRQQEGHFLPSPTLRHPSQGEELHPSRCVCIYFLRCYDIC

TRTRPLEQKLISEEDLAANDILDYKDDDDKV



[View online »](#)

Chromatograms: https://cdn.origene.com/chromatograms/mk6458_b10.zip

Restriction Sites: SgfI-MluI

Cloning Scheme:



ACCN: NM_001037671

ORF Size: 570 bp

OTI Disclaimer: The molecular sequence of this clone aligns with the gene accession number as a point of reference only. However, individual transcript sequences of the same gene can differ through naturally occurring variations (e.g. polymorphisms), each with its own valid existence. This clone is substantially in agreement with the reference, but a complete review of all prevailing variants is recommended prior to use. [More info](#)

OTI Annotation: This clone was engineered to express the complete ORF with an expression tag. Expression varies depending on the nature of the gene.

Components: The ORF clone is ion-exchange column purified and shipped in a 2D barcoded Matrix tube containing 10ug of transfection-ready, dried plasmid DNA (reconstitute with 100 ul of water).

Reconstitution Method:

1. Centrifuge at 5,000xg for 5min.
2. Carefully open the tube and add 100ul of sterile water to dissolve the DNA.
3. Close the tube and incubate for 10 minutes at room temperature.
4. Briefly vortex the tube and then do a quick spin (less than 5000xg) to concentrate the liquid at the bottom.
5. Store the suspended plasmid at -20°C. The DNA is stable for at least one year from date of shipping when stored at -20°C.

RefSeq: [NM_001037671.3](#), [NP_001032760.1](#)

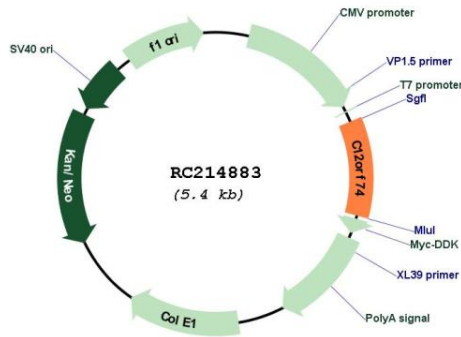
RefSeq Size: 1858 bp

RefSeq ORF: 573 bp

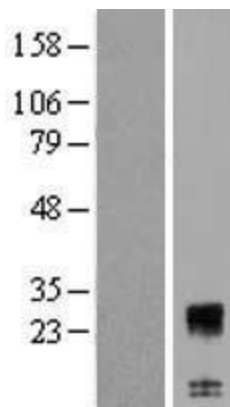
Locus ID: 338809

UniProt ID: Q32Q52
 Cytogenetics: 12q22
 MW: 21.2 kDa

Product images:



Circular map for RC214883



Western blot validation of overexpression lysate (Cat# [LY421977]) using anti-DDK antibody (Cat# [TA50011-100]). Left: Cell lysates from untransfected HEK293T cells; Right: Cell lysates from HEK293T cells transfected with RC214883 using transfection reagent MegaTran 2.0 (Cat# [TT210002]).