

## Product datasheet for **RC214882**

### CEACAM20 (NM\_001102598) Human Tagged ORF Clone

#### Product data:

Product Type:	Expression Plasmids
Product Name:	CEACAM20 (NM_001102598) Human Tagged ORF Clone
Tag:	Myc-DDK
Symbol:	CEACAM20
Synonyms:	UNQ9366
Mammalian Cell Selection:	Neomycin
Vector:	pCMV6-Entry (PS100001)
E. coli Selection:	Kanamycin (25 ug/mL)



[View online »](#)

**ORF Nucleotide Sequence:**

>RC214882 representing NM\_001102598  
 Red=Cloning site Blue=ORF Green=Tags(s)

TTTTGTAATACGACTCACTATAGGGCGGCCGGAATTCGTCGACTGGATCCGGTACCGAGGAGATCTGCC  
 GCC**CGCATCGCC**

ATGGGGCCTGCTGACTCATGGGGACACCACTGGATGGGAATCCTGCTTTACGCTCGCTTTGTACCGTAT  
 GGAGTCCCTCCAGCTGCAGCCCAGCTCACCTCAATGCCAACCCACTTGATGCCACCCAAAGTGAGGATGT  
 TGTTCCTGCTGTGTTGGGACCCCCAGGACACCCAGATTTCATGGCAGATCCAGAGAGCTGGCCAAACCC  
 TCCATTGCAGTCAGCCCAGGCACTGCCATAGAGCAGAAGGACATGGTGACCTTCTACTGCACCACTAAGG  
 ACGTCAACATTACCATCCACTGGGTTTCCAACAACCTCTCCGTTGTGTTCCATGAGCGCATGCAGCTGTC  
 CAAGGATGGCAAGATCCTCACCATTCTCATTGTCCAGCGGGAGGACTCAGGGACTACCAATGTGAAGCT  
 CGAGATGCCCTTCTGAGCCAGAGGAGCGACCCCATCTTCTGGATGTGAAGTATGGTCTGATCCTGTTG  
 AAATCAAATTGGAGTCTGGTGTGCCAGTGGGGAGGTGGTTGAGGTGATGGAGGGCTCCAGCATGACCTT  
 CTTAGCGGAAACAAAGTCTCACCACCCCTGTGCCTATACTTGGTTTCTCCTTGACTCCATTCTGTCTCAC  
 ACCACGAGAACATTACCATCCATGCTGTGTCCAGAGAACATGAGGGCCTGTACAGGTGCTTGGTGTCCA  
 ACAGTGCCACCCACCTGTCCAGCCTGGGTACTCTGAAGGTCCGAGTACTTGAAACACTGACCATGCCTCA  
 AGTCGTGCCTTCAAGCCTGAACCTTGTGGAGAATGCTAGGTCTGTGGACCTGACCTGCCAAACCGTCAAT  
 CAGAGTGTGAATGTCCAGTGGTTCCTAAGTGGCCAGCCCTCCTGCCAGTGAGCACCTGCAGCTGTGAG  
 CTGACAACAGGACCCTAATCATCCATGGCCTCCAGCGGAATGACACGGGGCCCTATGCCTGTGAGGTCTG  
 GAACTGGGGCAGCCGGGCGGAGTGAGCCCTTGAAGTCAACTGTCCCAGTCCCTCCTCCCTG  
 TCCTCAGGGGCCATCGTGGTATTGTATCGGGATCCTGGCTGTCATTGCTGTGGCCTCAGAAGTGGCT  
 ATTTTCTACATCAGAAATGCCAGACGGCCCTCAAGGAAAACAACAGAGGACCCAGTCATGAGACCTC  
 ACAACCCATCCCGAAGGAGGAGCACCCACAGAGCCAGTTCGAAAGCCTGAGTCTGAGTATTGCAAT  
 ATATCCAGCTTTCAGGGACGGATCAGAGTGAAGTCAACTGACGAAGCTGCCTTCAAGCAAGCCGTAGAGGCAAT  
 CTTTCAGCCCCTGGAAGCCACCACCCAAACCTCTGATGCCCCACTCAGATTGGTCTCCACTGTGCCAAA  
 AAACATGGAGTCAATCTATGAGGAGCTTGTGAATCCAGAGCCCAACACTTACATCCAAATCAACCCCTCC  
 GTC

**ACGCGT**ACGCGGCCGCTCGAGCAGAAACTCATCTCAGAAGAGGATCTGGCAGCAAATGATATCCTGGATT  
 ACAAGGATGACGACGATAAGGTTTAA

**Protein Sequence:**

>RC214882 representing NM\_001102598  
 Red=Cloning site Green=Tags(s)

MGPADSWGHWMGILLSASLCTVWSPAAAQLTLNANPLDATQSEDVVLVFGTTPRTPQIHGRSRELAKP  
 SIAVSPGTAIEQKDMVTFYCTTKDYNITIHWSNNLSVVFHERMQLSKDGKILITILIVQREDSGTQCEA  
 RDALLSQRSDPIFLDKYGPDPVEIKLESGVASGEVVEVMEGSSMTFLAETKSHPPCAYTWFLDLSILSH  
 TTRFTIHAVSREHEGLYRCLVNSATHLSSLGTLKVRVLETLTMPQVVPSSLNLVENARSVDLTCQTVN  
 QSVNVQWFLSGQPLLSEHLQLSADNRTLIIHGLQRNDTPYACEVWNGSRARSEPLELTINCPQSSSL  
 SSGAIVIGILAVIAVASELYFLYIRNARRPSRKTTEDPSHETSQIPKKEHPTSPSESLSPEYCN  
 ISQLQGRIRVELTKLPSASRRGNSFSPWKPPKPLMPPLRLVSTVPKNMESIYEELVNPEPNTYIQINPS  
 V

**TRTRPLEQKLI**SEEDLAANDILDYKDDDDKV

**Chromatograms:**

[https://cdn.origene.com/chromatograms/mk8063\\_b04.zip](https://cdn.origene.com/chromatograms/mk8063_b04.zip)

**Restriction Sites:**

SgfI-MluI

**Cloning Scheme:**


**ACCN:** NM\_001102598

**ORF Size:** 1473 bp

**OTI Disclaimer:** The molecular sequence of this clone aligns with the gene accession number as a point of reference only. However, individual transcript sequences of the same gene can differ through naturally occurring variations (e.g. polymorphisms), each with its own valid existence. This clone is substantially in agreement with the reference, but a complete review of all prevailing variants is recommended prior to use. [More info](#)

**OTI Annotation:** This clone was engineered to express the complete ORF with an expression tag. Expression varies depending on the nature of the gene.

**Components:** The ORF clone is ion-exchange column purified and shipped in a 2D barcoded Matrix tube containing 10ug of transfection-ready, dried plasmid DNA (reconstitute with 100 ul of water).

- Reconstitution Method:**
1. Centrifuge at 5,000xg for 5min.
  2. Carefully open the tube and add 100ul of sterile water to dissolve the DNA.
  3. Close the tube and incubate for 10 minutes at room temperature.
  4. Briefly vortex the tube and then do a quick spin (less than 5000xg) to concentrate the liquid at the bottom.
  5. Store the suspended plasmid at -20°C. The DNA is stable for at least one year from date of shipping when stored at -20°C.

**RefSeq:** [NM\\_001102598.1](#), [NP\\_001096068.1](#)

**RefSeq Size:** 1494 bp

**RefSeq ORF:** 1476 bp

**Locus ID:** 125931

**UniProt ID:** [Q6UY09](#)

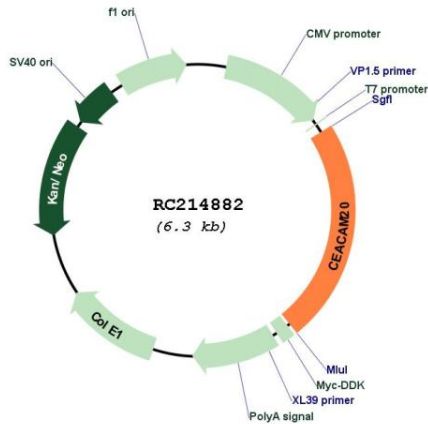
**Cytogenetics:** 19q13.31

**Protein Families:** Transmembrane

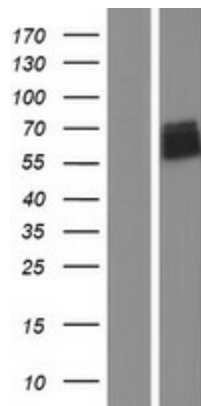
**MW:** 54 kDa

**Gene Summary:** Together with the tyrosine-protein kinase SYK, enhances production of the cytokine CXCL8/IL-8 via the NFkB pathway and may thus have a role in the intestinal immune response. [UniProtKB/Swiss-Prot Function]

**Product images:**



Circular map for RC214882



Western blot validation of overexpression lysate (Cat# [LY420167]) using anti-DDK antibody (Cat# [TA50011-100]). Left: Cell lysates from untransfected HEK293T cells; Right: Cell lysates from HEK293T cells transfected with RC214882 using transfection reagent MegaTran 2.0 (Cat# [TT210002]).