

Product datasheet for RC214872

SULT1A2 (NM_177528) Human Tagged ORF Clone

Product data:

Product Type:	Expression Plasmids
Product Name:	SULT1A2 (NM_177528) Human Tagged ORF Clone
Tag:	Myc-DDK
Symbol:	SULT1A2
Synonyms:	HAST4; P-PST; P-PST 2; ST1A2; STP2; TSPST2
Mammalian Cell Selection:	Neomycin
Vector:	pCMV6-Entry (PS100001)
E. coli Selection:	Kanamycin (25 ug/mL)
ORF Nucleotide Sequence:	>RC214872 ORF sequence Red=Cloning site Blue=ORF Green=Tags(s)

TTTTGTAATACGACTCACTATAGGGCGCCGGGAATTCGTCGACTGGATCCGGTACCGAGGAGATCTGCC
GCC**CGGATCGCC**

ATGGAGCTGATCCAGGACATCTCTCGCCCGCCACTGGAGTACGTGAAGGGGGTCCCCTCATCAAGTACT
TTGCAGAGGCACTGGGGCCCTGCAGAGCTTCCAGGCCCGCCTGATGACCTGCTCATCAGCACCTACCC
CAAGTCCGGCACCACCTGGGTGAGCCAGATTCTGGACATGATCTACCAGGGCGGTGACCTGGAAAAGTGT
CACCGAGCTCCCATCTTCATGCGGGTGCCTTCCCTTGAGTTCAAAGTCCCAGGGATCCCTCAGGGATGG
AGACTCTGAAAAACACACCAGCCCCAGACTCCTGAAGACACACCTGCCCTGGCTCTGCTCCCCAGAC
TCTGTTGGATCAGAAGGTCAAGGTGGTCTATGTTGCCCGCAACGCAAAGGATGTGGCGGTTTCTACTAC
CACTTCTACCACATGGCCAAAGTGTACCCTCACCTGGGACCTGGGAAAGCTTCTGGAGAAGTTCATGG
CTGGAGAAGTGTCTATGGGTCCCTGGTACCAGCACGTGCAAGAGTGGTGGGAGCTGAGCCGACCCACCC
TGTTCTCTACCTCTTCTATGAAGACATGAAGGAGAACCCAAAAGGGAGATTCAAAGATCTCTGGAGTTT
GTGGGGCGCTCCCTGCCAGAGGAGACTGTGGACCTCATGGTTGAGCACACGTGTTCAAGGAGATGAAGA
AGAACCCTATGACCAACTACACCACCGTCCGCCGGGAGTTCATGGACCACAGCATCTCCCCTTCATGAG
GAAAGGCATGGCTGGGGACTGGAAGACCACCTTACCCTGGCGCAGAATGAGCGCTTCGATGCGGACTAT
GCGGAGAAGATGGCAGGCTGCAGCCTCAGCTTCCGCTCTGAGCTG

ACGCGTACGCGGGCCGCTCGAGCAGAAACTCATCTCAGAAGAGGATCTGGCAGCAAATGATATCCTGGATT
ACAAGGATGACGACGATAAGGTTTAA



[View online »](#)

Protein Sequence: >RC214872 protein sequence
Red=Cloning site Green=Tags(s)

MELIQDISRPPLEYVKGVPLIKYFAEALGPLQSFQARPDLLISTYPKSGTTWVSQILDMIYQGGDLEKC
 HRAPIFMRVPFLEFKVPGIPSGMETLKNTPAPRLLKTHLPLALLPQTLLDQKVKVYVARNADVAVSYY
 HFYHMAKVYPHPGTWESFLEKFMAGEVSYGSWYQHVQEWELSRTHPVL YLFYEDMKENPKREIQKILEF
 VGRSLPEETVDLMVEHTSFKEMKKNPMTNYTTVRRREFMDHSISPFMRKGMAGDWKTTFTVAQNERFDADY
 AEKMAGCSLSFRSEL

TRTRPLEQKLISEEDLAANDILDYKDDDDKV

Chromatograms: https://cdn.origene.com/chromatograms/mk6609_g06.zip

Restriction Sites: SgfI-MluI

Cloning Scheme:



ACCN: NM_177528

ORF Size: 885 bp

OTI Disclaimer: The molecular sequence of this clone aligns with the gene accession number as a point of reference only. However, individual transcript sequences of the same gene can differ through naturally occurring variations (e.g. polymorphisms), each with its own valid existence. This clone is substantially in agreement with the reference, but a complete review of all prevailing variants is recommended prior to use. [More info](#)

OTI Annotation: This clone was engineered to express the complete ORF with an expression tag. Expression varies depending on the nature of the gene.

Components: The ORF clone is ion-exchange column purified and shipped in a 2D barcoded Matrix tube containing 10ug of transfection-ready, dried plasmid DNA (reconstitute with 100 ul of water).

Reconstitution Method:

1. Centrifuge at 5,000xg for 5min.
2. Carefully open the tube and add 100ul of sterile water to dissolve the DNA.
3. Close the tube and incubate for 10 minutes at room temperature.
4. Briefly vortex the tube and then do a quick spin (less than 5000xg) to concentrate the liquid at the bottom.
5. Store the suspended plasmid at -20°C. The DNA is stable for at least one year from date of shipping when stored at -20°C.

RefSeq: [NM_177528.2](#)

RefSeq Size: 1348 bp

RefSeq ORF: 888 bp

Locus ID: 6799

UniProt ID: [P50226](#)

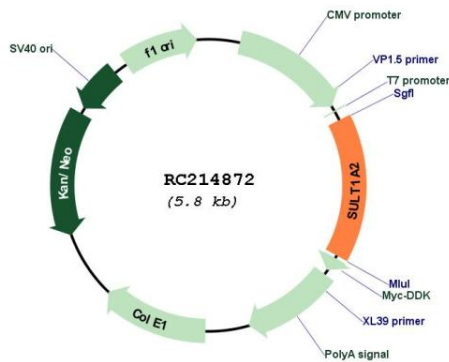
Cytogenetics: 16p11.2

Protein Pathways: Sulfur metabolism

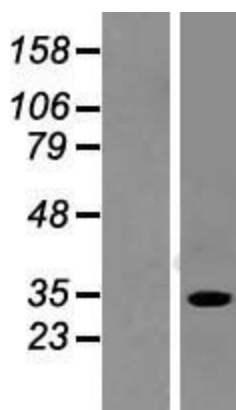
MW: 34.3 kDa

Gene Summary: Sulfotransferase enzymes catalyze the sulfate conjugation of many hormones, neurotransmitters, drugs, and xenobiotic compounds. These cytosolic enzymes are different in their tissue distributions and substrate specificities. The gene structure (number and length of exons) is similar among family members. This gene encodes one of two phenol sulfotransferases with thermostable enzyme activity. Two alternatively spliced variants that encode the same protein have been described. [provided by RefSeq, Jul 2008]

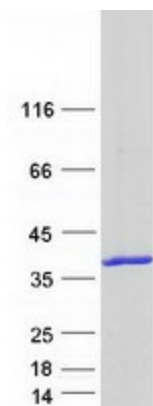
Product images:



Circular map for RC214872



Western blot validation of overexpression lysate (Cat# [LY420734]) using anti-DDK antibody (Cat# [TA50011-100]). Left: Cell lysates from untransfected HEK293T cells; Right: Cell lysates from HEK293T cells transfected with [RC224689] using transfection reagent MegaTran 2.0 (Cat# [TT210002]).



Coomassie blue staining of purified SULT1A2 protein (Cat# [TP314872]). The protein was produced from HEK293T cells transfected with SULT1A2 cDNA clone (Cat# RC214872) using MegaTran 2.0 (Cat# [TT210002]).