

Product datasheet for RC214869

TREX1 (NM_016381) Human Tagged ORF Clone

Product data:

Product Type: Expression Plasmids
Product Name: TREX1 (NM_016381) Human Tagged ORF Clone
Tag: Myc-DDK
Symbol: TREX1
Synonyms: AGS1; CRV; DRN3; HERNS
Mammalian Cell Selection: Neomycin
Vector: pCMV6-Entry (PS100001)
E. coli Selection: Kanamycin (25 ug/mL)
ORF Nucleotide Sequence: >RC214869 representing NM_016381
 Red=Cloning site Blue=ORF Green=Tags(s)

TTTTGTAATACGACTCACTATAGGGCGGCCGGAATTCGTCGACTGGATCCGGTACCGAGGAGATCTGCC
 GCC**CGATCGCC**

ATGGGCCCTGGAGCTCGCAGACAGGGCAGGATTGTGCAGGAAGGCCTGAGATGTGCTTCTGCCACCCC
 CTACCCCACTCCCTCCCTTCGGATCTTAACACTGGGCACTCACACACCCACCCCATGCTCCTCTCCAGG
 CTCAGCAGCAGGTACGTACCAACCATGGGCTCGCAGGCCCTGCCCGGGGCCCATGCAGACCCTCATC
 TTTTTCGACATGGAGGCCACTGGCTTGCCCTTCTCCAGCCCAAGGTCACGGAGCTGTGCCTGCTGGCTG
 TCCACAGATGTGCCCTGGAGAGCCCCACCTCTCAGGGCCACCTCCCACAGTTCTCCACCACCGCG
 TGTGTTAGACAAGCTCTCCCTGTGTGGCTCCGGGAAGGCCTGCAGCCCTGCAGCCAGCGAGATCACA
 GGTCTGAGCACAGCTGTGCTGGCAGCGCATGGGCGTCAATGTTTTGATGACAACCTGGCCAACTGCTCC
 TAGCCTTCTGCGGCGCCAGCCACAGCCCTGGTGCCTGGTGGCACACAATGGTGACCGCTACGACTTCCC
 CCTGCTCAAGCAGAGCTGGCTATGCTGGGCTCACCAGTGTCTGGATGGTGCCTTCTGTGTGGATAGC
 ATCACTGCGCTGAAGGCCCTGGAGCGAGCAAGCAGCCCCCAGAACAACGGCCCAAGGAAGAGCTATAGCC
 TAGGCAGCATCTACACTCGCCTGTATGGGCAGTCCCCTCCAGACTCGCACACGGCTGAGGGTGATGCTC
 GGCCCTGCTCAGCATCTGTCAGTGGAGACCACAGGCCCTGCTGCGGTGGTGGATGCTCACGCCAGGCCT
 TTCGGCACCATCAGGCCATGTATGGGGTCAAGCCTCTGCTAGGACCAAGCCAAGACCATCTGCTGTCA
 CAACCACTGCACACCTGGCCACAACAGGAACACTAGTCCAGCCTTGGAGAGAGCAGGGGTACCAAGGA
 TCTTCTCCAGTGAAGGACCCTGGAGCCCTATCCAGGGAGGGGCTGCTGGCCCCACTGGGTCTGCTGGCC
 ATCCTGACCTTGGCAGTAGCCACACTGTATGGACTATCCCTGGCCACACCTGGGGAG

ACGCGTACGCGGCCGCTCGAGCAGAACTCATCTCAGAAGAGGATCTGGCAGCAATGATATCCTGGATT
 ACAAGGATGACGACGATAAGGTTAA



[View online »](#)

Protein Sequence: >RC214869 representing NM_016381
Red=Cloning site Green=Tags(s)

MGPGARRQGRIVQGRPEMCFPPPTPLPLRILTLGHTPTPCSSPGSAAGTYPTMGSQALPPGPMQTLI
 FFDMEATGLPFSQPKVTELCLLAVHRCALLESPTSQGPPPTVPPPPRVVDKLSLCVAPGKACSPAASEIT
 GLSTAVLAAHGRCQCFDDNLANLLLAFLRRQPQPWCLVAHNGDRYDFLLQAEAMLGLTSALDGAFVDS
 ITALKALERASSPSEHGPRKSYSLGSIYTRLYGQSPDSHTAEGDVLALLSICQWRPQALLRWVDAHARP
 FGTIRPMYGVTAASARTKPRPSAVTTTAHLATTRNTSPSLGESRGTKDLPPVKDPGALSREGLLAPLGLLA
 ILTLAVATLYGLSLATPGE

TRTRPLEQKLISEEDLAANDILDYKDDDDKV

Chromatograms: https://cdn.origene.com/chromatograms/mk6114_c02.zip

Restriction Sites: SgfI-MluI

Cloning Scheme:



ACCN: NM_016381

ORF Size: 1107 bp

OTI Disclaimer: The molecular sequence of this clone aligns with the gene accession number as a point of reference only. However, individual transcript sequences of the same gene can differ through naturally occurring variations (e.g. polymorphisms), each with its own valid existence. This clone is substantially in agreement with the reference, but a complete review of all prevailing variants is recommended prior to use. [More info](#)

OTI Annotation: This clone was engineered to express the complete ORF with an expression tag. Expression varies depending on the nature of the gene.

Components: The ORF clone is ion-exchange column purified and shipped in a 2D barcoded Matrix tube containing 10ug of transfection-ready, dried plasmid DNA (reconstitute with 100 ul of water).

Reconstitution Method:

1. Centrifuge at 5,000xg for 5min.
2. Carefully open the tube and add 100ul of sterile water to dissolve the DNA.
3. Close the tube and incubate for 10 minutes at room temperature.
4. Briefly vortex the tube and then do a quick spin (less than 5000xg) to concentrate the liquid at the bottom.
5. Store the suspended plasmid at -20°C. The DNA is stable for at least one year from date of shipping when stored at -20°C.

Note: Plasmids are not sterile. For experiments where strict sterility is required, filtration with 0.22um filter is required.

RefSeq: [NM_016381.5](#)

RefSeq Size: 2216 bp

RefSeq ORF: 1110 bp

Locus ID: 11277

UniProt ID: [Q9NSU2](#)

Cytogenetics: 3p21.31

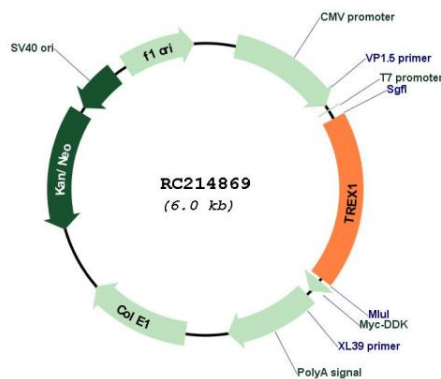
Protein Families: Druggable Genome, Transmembrane

Protein Pathways: Cytosolic DNA-sensing pathway

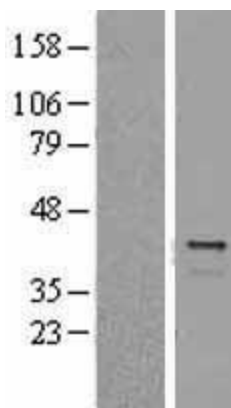
MW: 38.7 kDa

Gene Summary: This gene encodes a nuclear protein with 3' exonuclease activity. The encoded protein may play a role in DNA repair and serve as a proofreading function for DNA polymerase. Mutations in this gene result in Aicardi-Goutieres syndrome, chilblain lupus, Cree encephalitis, and other diseases of the immune system. Alternative splicing results in multiple transcript variants. [provided by RefSeq, Sep 2012]

Product images:



Circular map for RC214869



Western blot validation of overexpression lysate (Cat# [LY402546]) using anti-DDK antibody (Cat# [TA50011-100]). Left: Cell lysates from untransfected HEK293T cells; Right: Cell lysates from HEK293T cells transfected with RC214869 using transfection reagent MegaTran 2.0 (Cat# [TT210002]).