

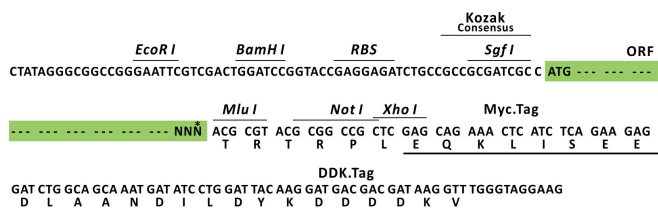
Product datasheet for RC214867L3

Cadherin like 26 (CDH26) (NM_177980) Human Tagged Lenti ORF Clone

Product data:

Product Type:	Expression Plasmids
Product Name:	Cadherin like 26 (CDH26) (NM_177980) Human Tagged Lenti ORF Clone
Tag:	Myc-DDK
Symbol:	Cadherin like 26
Synonyms:	VR20
Mammalian Cell Selection:	Puromycin
Vector:	pLenti-C-Myc-DDK-P2A-Puro (PS100092)
E. coli Selection:	Chloramphenicol (34 ug/mL)
ORF Nucleotide Sequence:	The ORF insert of this clone is exactly the same as(RC214867).
Restriction Sites:	SgfI-MluI
Cloning Scheme:	

Cloning sites used for ORF Shuttling:



* The last codon before the Stop codon of the ORF.

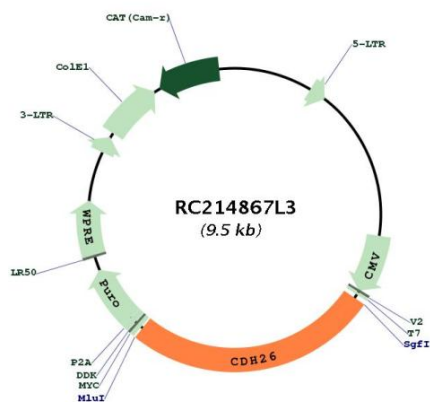
ACCN:	NM_177980
ORF Size:	2496 bp



[View online »](#)

OTI Disclaimer:	The molecular sequence of this clone aligns with the gene accession number as a point of reference only. However, individual transcript sequences of the same gene can differ through naturally occurring variations (e.g. polymorphisms), each with its own valid existence. This clone is substantially in agreement with the reference, but a complete review of all prevailing variants is recommended prior to use. More info
OTI Annotation:	This clone was engineered to express the complete ORF with an expression tag. Expression varies depending on the nature of the gene.
Components:	The ORF clone is ion-exchange column purified and shipped in a 2D barcoded Matrix tube containing 10ug of transfection-ready, dried plasmid DNA (reconstitute with 100 ul of water).
Reconstitution Method:	<ol style="list-style-type: none"> 1. Centrifuge at 5,000xg for 5min. 2. Carefully open the tube and add 100ul of sterile water to dissolve the DNA. 3. Close the tube and incubate for 10 minutes at room temperature. 4. Briefly vortex the tube and then do a quick spin (less than 5000xg) to concentrate the liquid at the bottom. 5. Store the suspended plasmid at -20°C. The DNA is stable for at least one year from date of shipping when stored at -20°C.
RefSeq:	NM_177980.1
RefSeq Size:	3192 bp
RefSeq ORF:	2499 bp
Locus ID:	60437
UniProt ID:	Q8IXH8
Cytogenetics:	20q13.33
Protein Families:	Transmembrane
MW:	92.2 kDa
Gene Summary:	This gene encodes a member of the cadherin protein family. Cadherins are a family of calcium-dependent adhesion molecules that mediate cell-cell adhesion in all solid tissues and modulate a wide variety of processes, including cell polarization, migration and differentiation. Cadherin domains occur as repeats in the extracellular region and are thought to contribute to the sorting of heterogeneous cell types and the maintenance of orderly structures such as epithelium. This protein is expressed in gastrointestinal epithelial cells and may be upregulated during allergic inflammation. This protein interacts with alpha integrins and may also be involved in leukocyte migration and adhesion. [provided by RefSeq, Jan 2017]

Product images:



Circular map for RC214867L3