

## Product datasheet for **RC214867**

### Cadherin like 26 (CDH26) (NM\_177980) Human Tagged ORF Clone

#### Product data:

Product Type:	Expression Plasmids
Product Name:	Cadherin like 26 (CDH26) (NM_177980) Human Tagged ORF Clone
Tag:	Myc-DDK
Symbol:	Cadherin like 26
Synonyms:	VR20
Mammalian Cell Selection:	Neomycin
Vector:	pCMV6-Entry (PS100001)
E. coli Selection:	Kanamycin (25 ug/mL)



[View online »](#)

**ORF Nucleotide  
Sequence:**

>RC214867 representing NM\_177980  
 Red=Cloning site Blue=ORF Green=Tags(s)

TTTTGTAATACGACTCACTATAGGGCGGCCGGAATTCGTCGACTGGATCCGGTACCGAGGAGATCTGCC  
 GCC**CGGATCGCC**

ATGGCCATGAGATCCGGGAGGCACCCCTCGCTGCTGCTTCTAGTGCTGCTGCTGGCTGCTGCAGG  
 TCAGTATCATTGACAGTGTCAACAGGAAACAGATGATCTTACTAAGCAAACAAAGGAAAAGATCTACCA  
 GCCTCTACGGCGATCCAAGAGAAGATGGTTATACCACCTTGGAGCTGGAGGAGGAAGACCCGGGACCC  
 TTTCCAAACTCATTGGTGAGCTGTTCAATAATATGTCTTATAACATGTCACTAATGTATCTAATCAGTG  
 GACCTGGTGTGGATGAATATCCAGAGATTGGTTTGTCTCTAGAAGATCATGAGAACGGAAGGATATA  
 TGTTCCACGCCCTGTCGATCGAGAAATGACACCATCTTTCACGGTTTATTTTGATGTTGTGGAGCGCTCA  
 ACAGGAAAAATTGTGGATACATCCTTGATTTTCAACATTAGGATCAGTGTGAATGATCATGCACCCC  
 AGTTTCCAGAGAAGGAATTAACATCACTGTGCAAGAAAACCAATCTGCAGGGCAACCTATTTTTCAGAT  
 GTTAGCAGTCGATTTGGATGAAGAAAACACTCCAAATTCTCAAGTCCTTACTTCTCATTCTCAAACA  
 CCATTACTGAAAGAAAGTGGTTTCCGGTTGATCGCCTTAGTGGAGAAATACGACTCTCTGGCTGCTTAG  
 ATTATGAGACCGCTCCTCAGTTTACACTGCTAATCAGAGCCAGGGACTGTGGAGAACCGTCACTGTCATC  
 CACGACCACCGTTACAGTGGATGTGCAAGAAGGCAACAACCACAGGCCTGCATTTACCCAGGAGAATAT  
 AAGTTTACAGATTCCTGAAGGCCGAGCCAGCCAGGGCGTGTTCGCTCTCCTGGTTCAAGATCGAGATTCTC  
 CATTTACATCAGCTTGGAGAGCAAAATTAACATATTGCATGGCAATGAAGAGGGGCATTTTACATTTTC  
 GACTGACCCTGAGACCAAGGATATTAATGTTATCAAGCCTTGGATTATGAGACTCGCCACGGC  
 CAAAGCCTCATCATTGTCGTGGAGAATGAGGAGAGGCTCGTCTTCTGTGAGAGAGGAAAGCTTCAGCCGC  
 CAAGGAAGGCAGCAGCCAGCCACTGTGAGTGTGACAGTGCAGAGCCAAACGACCCACCCAGCCTTTCA  
 CCCCAGAGCTTCAATTGTCAATAAAGAGAGGGCGCCAGGCCTGGGACCTGTTGGGAACCTTTAATGCC  
 ATGGATCCAGACAGCCAGATAAGATATGAACTGGTTCATGACCCAGCAAATGGGTGAGCGTCGACAAAA  
 ACTCCGGAGTGGTCATCACCGTGGAGCCAAATGACCGAGAATCCCTCATGTAATAACAGTTTTTATGT  
 AATCATATTACGCTGTTGATGATGGCTTCCACCGCAGACTGTACAGGGACCCTAATGCTCTTCTCTG  
 TCTGACATCAATGACAACGTCCGACTCTCCGGCCAGTTCGCTACATGGAGGCTGTGAGTCTGCTG  
 TGCATGAGCCCTCCACATCGAGGCAGAGGATCCGGACCTGGAGCCGTTCTTGACCCATTTACATTTGA  
 ATTGGACAATACCTGGGAAATGCGGAGGACACATGGAAGTTGGGAGAAATGGGGTCAATCAGTTGAA  
 CTTTTAACCTTGAGAAGCCTGCCACGTGGTAATTACTTGGTGCCACTTTCATTGGAGACAAACAGGGAC  
 TTTCCAGAAAGCAAACTGTCCATGTAAGGATCTGCCCTGTGCCAGTGGGCTCACATGTGTGGAGCTTGC  
 AGATGCAGAAGTGGGGTTCATGTGGGGCCCTGTTCCCTGTCTGTGCAGCATTGTGGCTCTGGCAGTG  
 GCTCTGCTTTTTCTGTTGCGATGCTATTTTGTGCTTGAACCTAAGAGGCATGGATGCTCTGTATCCAATG  
 ATGAAGGCCACCAAACTGGTCATGTATAATGCGGAGAGCAAAGGCACTTCAGCCAGACATGGTCAGA  
 TGTTGAAGGCCAGAGGCCGGCTCTGCTCATCTGCACAGCTGCAGCAGGACCCACGCAGGGAGTTAAGGAT  
 CTCGAGGAAGTGCCTCCATCTGCAGCGAGTCAGTCAGCCAAAGCACGCTGTGCTCTGGGGAGCTGGGTT  
 ATGGCAAGCCCTTGGAGCAAGAAGTGTGAAAAACATACTACTCTACTCTGCTTACCCAGATGCCACAAT  
 GCACAGACAACCTCTGGCTCCGGTGGAAAGGAGGATGGCAGAGACATTGAATCAGAAAACCATGTTGCC  
 AATGTGCTGGAAGATGACCCCGGTACCTACCTCACGTCTACAGCGAGGAAGGGGAGTGTGGAGGGGCC  
 CATCCCTCAGCTCTTGCCAGCTTGAACAGGAGTTGCAACCTGATTTGCTGGACTCTTTGGTTCAAA  
 AGCGACTCCGTTTGGAGAAATATATTCAGAGTCAGGTGTTCTTCC

**ACGGT**ACGCGGCCGCTCGAGCAGAACTCATCTCAGAAGAGGATCTGGCAGCAAATGATATCCTGGATT  
 ACAAGGATGACGACGATAAGGTTTAA

**Protein Sequence:** >RC214867 representing NM\_177980  
Red=Cloning site Green=Tags(s)

MAMRSGRHPSLLLLLVLLLWLLQVSIIDSVOQETDDLTKQTKEKIYQPLRRSKRRWITTLEEEEDPGP  
FPKLI GELFNNMSYNMSL MYLISGPGVDEYPEIGLFSLEDHENGRIYVHRPV DREMTSPSFTVYFDVVERS  
TGKIVDTSLIFNIRISDVNDHAPQFPEKEFNITVQENQSAGQPIFQMLAVDLDEENTPNSQVLYFLISQT  
PLLKESGFRVDRLSGEIRLSGCLDYETAPQFTLLIRARDCGEPSSLSTTTVHVDVQEGNNHRPAFTQENY  
KVQIPEGRASQGVLRLLVQDRDSPFTSAWRAKFNILHGNEEGHFDISTDPETNEGILNVIKPLDYETRPA  
QSLIIVVENEERLVFCERGKLQPPRKAASATVSVQVTDANDPPAFHPQSFIVNKEEGARPGTLLGTFNA  
MDPDSQIRYELVHDPANWVSDKNSGVVITVEPIDRESPHVNNSFYVIIHAVDDGFPPQTATGTLMLFL  
SDINDNVPTLRPRSRYMEVCESAVHEPLHIEAEDPDLEPFSDPFTFELDNTWGNAEDTWKLRNWXGQSV  
LLTLRSLPRGNLVPLFIGDKQGLSQKQTVHVRICPCASGLTCVELADAEVGLHVGALFPVCAAFVALAV  
ALLFLLRCYFVLEPKRHGCSVSNDEGHQTLVMYNAESKGTSAQTWSDVEGQRPALLICTAAAGPTQGVKD  
LEEVPASASQSAQARCALGSWGYGKPFEPKSVKNIHSTPAYPDATMHRQLLAPVEGRMAETLNQKLHVA  
NVLEDDPGYLPVYSEEGECGGAPSLSSLASLEQELQPDLLDSL GSKATPFEEIYSESGVPS

TRTRPLEQKLISEEDLAANDILDYKDDDDKV

**Chromatograms:** [https://cdn.origene.com/chromatograms/mk8013\\_c05.zip](https://cdn.origene.com/chromatograms/mk8013_c05.zip)

**Restriction Sites:** Sgfl-Mlul

Cloning Scheme:



ACCN: NM\_177980

ORF Size: 2496 bp

OTI Disclaimer: The molecular sequence of this clone aligns with the gene accession number as a point of reference only. However, individual transcript sequences of the same gene can differ through naturally occurring variations (e.g. polymorphisms), each with its own valid existence. This clone is substantially in agreement with the reference, but a complete review of all prevailing variants is recommended prior to use. [More info](#)

OTI Annotation: This clone was engineered to express the complete ORF with an expression tag. Expression varies depending on the nature of the gene.

Components: The ORF clone is ion-exchange column purified and shipped in a 2D barcoded Matrix tube containing 10ug of transfection-ready, dried plasmid DNA (reconstitute with 100 ul of water).

**Reconstitution Method:**

1. Centrifuge at 5,000xg for 5min.
2. Carefully open the tube and add 100ul of sterile water to dissolve the DNA.
3. Close the tube and incubate for 10 minutes at room temperature.
4. Briefly vortex the tube and then do a quick spin (less than 5000xg) to concentrate the liquid at the bottom.
5. Store the suspended plasmid at -20°C. The DNA is stable for at least one year from date of shipping when stored at -20°C.

**RefSeq:** [NM\\_177980.4](#)

**RefSeq Size:** 3192 bp

**RefSeq ORF:** 2499 bp

**Locus ID:** 60437

**UniProt ID:** [Q8IXH8](#)

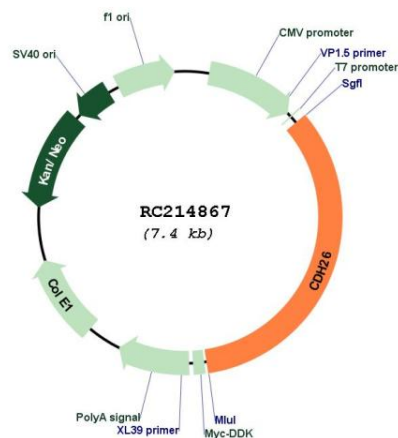
**Cytogenetics:** 20q13.33

**Protein Families:** Transmembrane

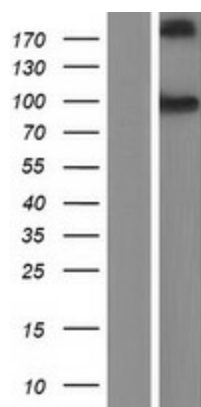
**MW:** 92.2 kDa

**Gene Summary:** This gene encodes a member of the cadherin protein family. Cadherins are a family of calcium-dependent adhesion molecules that mediate cell-cell adhesion in all solid tissues and modulate a wide variety of processes, including cell polarization, migration and differentiation. Cadherin domains occur as repeats in the extracellular region and are thought to contribute to the sorting of heterogeneous cell types and the maintenance of orderly structures such as epithelium. This protein is expressed in gastrointestinal epithelial cells and may be upregulated during allergic inflammation. This protein interacts with alpha integrins and may also be involved in leukocyte migration and adhesion. [provided by RefSeq, Jan 2017]

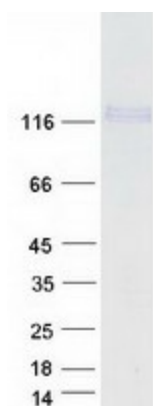
### Product images:



Circular map for RC214867



Western blot validation of overexpression lysate (Cat# [LY406070]) using anti-DDK antibody (Cat# [TA50011-100]). Left: Cell lysates from untransfected HEK293T cells; Right: Cell lysates from HEK293T cells transfected with RC214867 using transfection reagent MegaTran 2.0 (Cat# [TT210002]).



Coomassie blue staining of purified CDH26 protein (Cat# [TP314867]). The protein was produced from HEK293T cells transfected with CDH26 cDNA clone (Cat# RC214867) using MegaTran 2.0 (Cat# [TT210002]).