

Product datasheet for **RC214853**

PALD (PALD1) (NM_014431) Human Tagged ORF Clone

Product data:

Product Type:	Expression Plasmids
Product Name:	PALD (PALD1) (NM_014431) Human Tagged ORF Clone
Tag:	Myc-DDK
Symbol:	PALD
Synonyms:	KIAA1274; PALD
Mammalian Cell Selection:	Neomycin
Vector:	pCMV6-Entry (PS100001)
E. coli Selection:	Kanamycin (25 ug/mL)



[View online »](#)

ORF Nucleotide Sequence:

>RC214853 representing NM_014431
 Red=Cloning site Blue=ORF Green=Tags(s)

TTTTGTAATACGACTCACTATAGGGCGGCCGGGAATTCGTCGACTGGATCCGGTACCGAGGAGATCTGCC
 GCC**CGGATCGCC**

ATGGGTACAACGGCCAGCACAGCCAGCAGCGGTCTCGGACGGCACCCATTTGAGGGCTACAGGGCA
 GTGGCAGCATGGACAGTCGGCACTCCGTACAGTCCACTCCTCCAGAGCACTAGCTTGATAACAGCAA
 GGCCAAGTCCATCATCCCAACAAGGTGGCCCTGTTGTGATCACGTACAACGCAAGGAGGAGTCCAG
 ATCCATGATGAGCTGCTCAAGGCTCATTACACGTTGGGCCGGCTCTCGGACAACACCCCTGAGCACTACC
 TGGTGCAAGGCCGCTACTTCTGGTGGGGATGTCAGTGAAGAAGTGGATGTGCTGGCACCGTGGGAAG
 CTGTGGGGCCCCAACTCCGGCAGGTGCAGGGTGGGCTCACTGTGTTCCGGCATGGGACAGCCAGCCTC
 TCAGGGTTCAGGCGGGTCTCCAGAACTCCAGAAGGACGGACATAGGGAGTGTGCATCTTCTGTGTGC
 GGGAGGAACCTGTGCTTTCTCGTGCAGATGAGGACTTGTGTCTACACACCTCGAGACAAGCAGAA
 CCTTCATGAGAACCTCCAGGGCCTTGGACCCGGGTCCGGTGGAGAGCCTGGAGCTGGCCATCCGGAAA
 GAGATCCACGACTTTGCCAGCTGAGCGAGAACACATACCATGTGTACCAATAACACCGAGGACCTGTGGG
 GGGAGCCCCATGCTGTGGCCATCCATGGTGAGGACGACTTGCATGTGACGGAGGAGGTGTACAAGCGGCC
 CCTTCTCTGCAGCCACCTACAGGTACCACCGCTGCCCTGCCCGAGCAAGGGAGTCCCTGGAGGCC
 CAGTTGGACGCCTTTGTGAGTGTCTCCGGGAGACCCCAAGCCTGCTGCAGCTCCGTGATGCCACGGGC
 CTCCCCAGCCCTCGTCTTACGTGCCAGATGGGCGTGGGAGGACCAACCTGGGCATGGTCTGGGCAC
 CCTCATCTGCTTACCGCAGTGGGACCACTCCAGCCAGAGGCTGCCCCACGCAGGCCAAGCCCTG
 CCTATGGAGCAGTCCAGGTGATCCAGAGCTTTCTCCGCATGGTCCCAAGGGAAGGAGGATGGTGGAA
 AGGTGGACAGAGCCATCACTGCCTGTGCCGAGTTGCATGACCTGAAAGAAGTGGTCTTGGAAAACAGAA
 GAAGTTAGAAGGTATCCGACCGGAGAGCCAGCCAGGGAAGCGGACGCCGACACAGCGTCTGGCAGAGG
 GCGCTGTGGAGCCTGGAGCGATACTTCTACCTGATCCTGTTAACTACTACCTTCATGAGCAGTACCCGC
 TGGCCTTTGCCCTCAGTTTACGCCGCTGGCTGTGTGCCACCCTGAGCTGTACCGCTGCCCGTACGCT
 GAGCTCAGCAGGCCCTGTGGCTCCGAGGGACCTCATCGCCAGGGGCTCCCTACGGGAGGACGATCTGGTC
 TCCCCGGACGCGCTCAGCACTGTGAGAGATGGATGTGGCAACTTCCGGCGGGTCCCCGCATGCCCA
 TCTACGGCACGGCCAGCCAGCCCAAGGCCCTGGGAGCATCTGGCCTACCTGACGGACGCCAAGAG
 GAGGCTGCGGAAGTTGTCTGGGTGAGCCTTCGGGAGGAGGCCGTGTTGGAGTGTGACGGGCACACCTAC
 AGCCTGCGGTGGCTGGGCCCTGTGGCTCCTGACCAGCTGGAGACCCTGGAGGCCAGCTGAAGGCC
 ATCTAAGCGAGCCTCCCCAGGCAAGGAGGGCCCTGACCTACAGGTTCCAGACCTGCCTTACCATGCA
 GGAGGTCTTACGCCAGCACCGCAGGGCCTGTCTGGCCTCACCTACCACCGCATCCCCATGCCGACTTC
 TGTGCCCCCCGAGAGGAGGACTTTGACCAGCTGTGGAGGCCCTGCGGGCCGCCCTCTCCAAGGACCCAG
 GCACTGGCTTCGTGTTACAGTGCCTCAGCGCCAGGGCCGTACCAACTGCGATGGTGGTGGCTGTCTCT
 GGCCTTCTGGCACATCCAAGGCTTCCCCGAGGTGGGTGAGGAGGAGCTCGTGAGTGTGCCTGATGCCAAG
 TTCCTAAGGGTGAATTTACAGTAGTAATGAAGGTGGTGCAGCTGCTACCCGATGGGCACCGTGTGAAGA
 AGGAGGTGGACGACGCTGGACTGTGACGAGACCATGACGCCATGCACTACCACCTGCGGGAGAT
 CATCATCTGCACCTACCGCCAGGCGAAGGCAGCGAAAGAGGCGCAAGAAATGCGGAGGCTGCAGCTGCGG
 AGCCTGCAGTACTTGGAGCGCTATGTCTGCCTGATTCTCTTCAACGCGTACCTCCACCTGGAGAAGGCCG
 ACTCTGGCAGAGGCCCTTACGACCTGGATGCAGGAGGTGGCATCGAAGGCTGGCATCTACGAGATCCT
 TAACGAGCTGGGCTTCCCCGAGCTGGAGAGCGGGAGGACCAGCCCTTCTCCAGGCTGCGCTACCGGTGG
 CAGGAGCAGAGCTGCAGCCTCGAGCCCTGCCCCGAGGACTTGCTG

AG**CGGACCG**ACGCGTACGCGGCCGCTCGAGCAGAACTCATCTCAGAAGAGGATCTGGCAGCAAATGATATCC
 TGGATTACAAGGATGACGACGATAAGGTTTAA

Protein Sequence: >RC214853 representing NM_014431
 Red=Cloning site Green=Tags(s)

MGTTASTAQQTVSAGTPFEGLQSGTMDSRHSVSIHSFQSTSLHNSKAKSIIPNKVAPVVITYNCKEEFQ
 IHDELLKAHYTLGRLSDNTPEHYLVQGRYFLVRDVTEKMDVLGTVGSCGAPNFRQVQGGTLVFGMGQPSL
 SGFRRVLQKLQKDGHRECVIFCVREPVFLRADEDFVSYTPRDKQNLHENLQGLGPGVRVESLELAIRK
 EIHDFAQLSENTYHVYHNTEDLWGEPHAVAIGHEDDLHVTEEVYKRPLFLQPTYRYHRLPLPEQGSPL
 QLDADFVSVLRETPSLQLRDAHGPPALVFSQMGVGRTNLGMVLGTLILLHRSQTTSQPEAAPTQAKPL
 PMEQFQVIQSFLRMVPQGRMVVEVDRAITACAELHDLKEVLENQKKLEGIRPESPAQGSGRHSVWQR
 ALWSLERYFYLLFNYYLHEQYPLAFALFSRWLCAPELYRPLVTLSSAGPVAPRDLIARGSLREDDL
 SPDALSTVREMDVANFRVPRMPIYGTAPSAKALGSILAYLTDKRRLKVVVWVSLREEAVLECDGHTY
 SLRWPGPPVAPDQLETLEAQLKAHLSEPPPGKEGPLTYRFQTCLEMQEVSQHRACPLTYHRIPMPDF
 CAPREEDFDQLEALRAALSKDPGTGFVFSCLSGQGRITAMVVAVLAFWHIQGFPEVGEELVSVPAK
 FTKGEFQVVMKVQQLPDGHRVKKEVDAALDTVSETMTPMHYHLREIIICTYRQAKAAKEAQEMRRLQLR
 SLQYLERVYVCLILFNAYLHLEKADSWQRPFSTWMQEVASKAGIYEILNELGFPELESGEDQPF
 SRLRYR
 QEQSCSLEPSAPEDLL

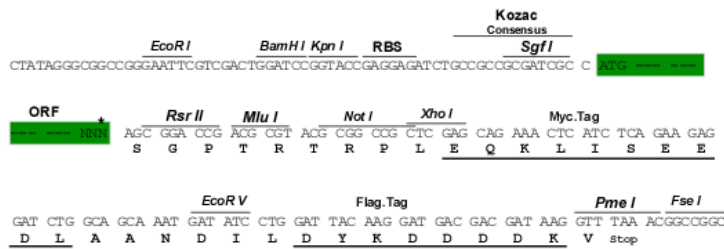
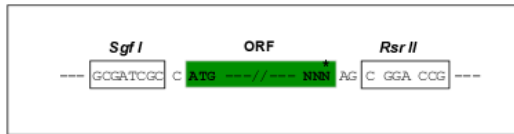
SGPTRRRLEQKLISEEDLAANDILDYKDDDDKV

Chromatograms: https://cdn.origene.com/chromatograms/mk8027_b09.zip

Restriction Sites: SgfI-RsrII

Cloning Scheme:

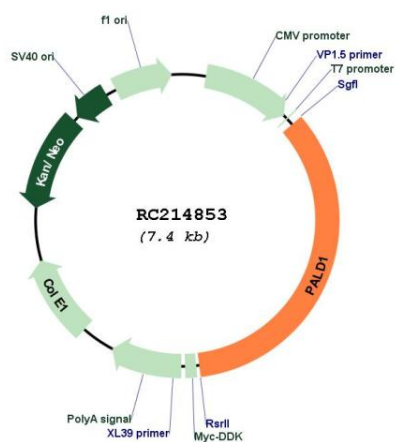
Cloning sites used for ORF Shuttling:



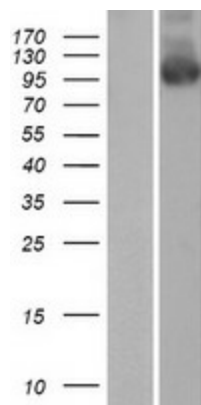
* The last codon before the Stop codon of the ORF

ACCN:	NM_014431
ORF Size:	2568 bp
OTI Disclaimer:	The molecular sequence of this clone aligns with the gene accession number as a point of reference only. However, individual transcript sequences of the same gene can differ through naturally occurring variations (e.g. polymorphisms), each with its own valid existence. This clone is substantially in agreement with the reference, but a complete review of all prevailing variants is recommended prior to use. More info
OTI Annotation:	This clone was engineered to express the complete ORF with an expression tag. Expression varies depending on the nature of the gene.
Components:	The ORF clone is ion-exchange column purified and shipped in a 2D barcoded Matrix tube containing 10ug of transfection-ready, dried plasmid DNA (reconstitute with 100 ul of water).
Reconstitution Method:	<ol style="list-style-type: none">1. Centrifuge at 5,000xg for 5min.2. Carefully open the tube and add 100ul of sterile water to dissolve the DNA.3. Close the tube and incubate for 10 minutes at room temperature.4. Briefly vortex the tube and then do a quick spin (less than 5000xg) to concentrate the liquid at the bottom.5. Store the suspended plasmid at -20°C. The DNA is stable for at least one year from date of shipping when stored at -20°C.
RefSeq:	NM_014431.3
RefSeq Size:	4569 bp
RefSeq ORF:	2571 bp
Locus ID:	27143
UniProt ID:	Q9ULE6
Cytogenetics:	10q22.1
MW:	96.6 kDa

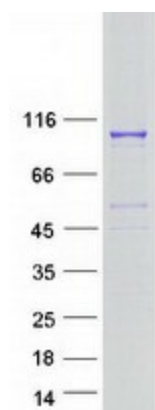
Product images:



Circular map for RC214853



Western blot validation of overexpression lysate (Cat# [LY415280]) using anti-DDK antibody (Cat# [TA50011-100]). Left: Cell lysates from untransfected HEK293T cells; Right: Cell lysates from HEK293T cells transfected with RC214853 using transfection reagent MegaTran 2.0 (Cat# [TT210002]).



Coomassie blue staining of purified PALD1 protein (Cat# [TP314853]). The protein was produced from HEK293T cells transfected with PALD1 cDNA clone (Cat# RC214853) using MegaTran 2.0 (Cat# [TT210002]).