

Product datasheet for **RC214849**

RNase L (RNASEL) (NM_021133) Human Tagged ORF Clone

Product data:

Product Type:	Expression Plasmids
Product Name:	RNase L (RNASEL) (NM_021133) Human Tagged ORF Clone
Tag:	Myc-DDK
Symbol:	RNase L
Synonyms:	PRCA1; RNS4
Mammalian Cell Selection:	Neomycin
Vector:	pCMV6-Entry (PS100001)
E. coli Selection:	Kanamycin (25 ug/mL)



[View online »](#)

ORF Nucleotide Sequence:

>RC214849 representing NM_021133
 Red=Cloning site Blue=ORF Green=Tags(s)

TTTTGTAATACGACTCACTATAGGGCGGCCGGAATTCGTCGACTGGATCCGGTACCGAGGAGATCTGCC
 GCC**CGCATCGCC**

ATGGAGAGCAGGGATCATAACAACCCCCAGGAGGGACCCACGTCCTCCAGCGGTAGAAGGGCTGCAGTGG
 AAGACAATCACTTGCTGATTAAAGCTGTTCAAAACGAAGATGTTGACCTGGTCCAGCAATTGCTGGAAGG
 TGGAGCCAATGTTAATTTCCAGGAAGAGGAAGGGGGCTGGACACCTCTGCATAACGCAGTACAAATGAGC
 AGGGAGGACATTGTGAACTTCTGCTTCGTCATGGTGCTGACCCTGTTCTGAGGAAGAAGAATGGGGCCA
 CGCCTTTTATCCTCGCAGCGATTGCGGGGAGCGTGAAGCTGCTGAACTTTTCTTTCTAAAGGAGCAGA
 TGTCAATGAGTGTATTTTTATGGCTTACAGCCTTCATGGAAGCCGCTGTGTATGGTAAGGTCAAAGCC
 CTAATAATCCTTTATAAGAGAGGAGCAAATGTGAATTTGAGGCGAAAGACAAAGGAGGATCAAGAGCGGC
 TGAGGAAAGGAGGGGCCACAGCTCTCATGGACGCTGCTGAAAAAGGACACGTAGAGGTCTTGAAGATTCT
 CCTTGATGAGATGGGGCAGATGTAACGCCTGTGACAATATGGGCAGAAATGCCTTGATCCATGCTCTC
 CTGAGCTCTGACGATAGTGATGTGGAGGCTATTACGCATCTGCTGCTGGACCATGGGGCTGATGTCAATG
 TGAGGGGAGAAAGAGGGAAGACTCCCCTGATCCTGGCAGTGGAGAAGAAGCACTTGGGTTTGGTGACAG
 GCTTCTGGAGCAAGAGCACATAGAGATTAATGACACAGACAGTGTGGCAAAACAGCACTGCTGCTTGTCT
 GTTGAACCAAAGTGAAGAAAATCGCCGAGTTGCTGTGCAAACTGGAGCCAGTACAGATTGTTGGGGATC
 TTGTTATGACAGCGAGGCGGAATTATGACCATTCCCTTGTGAAGTTCTTCTCTCATGGAGCCAAAGA
 AGATTTTACCCTCCTGCTGAAGACTGGAAGCCTCAGAGCTCACACTGGGGGCAGCCCTGAAGGATCTC
 CACAGAATATACCGCCCTATGATTGGCAAACCTCAAGTTCTTTATTGATGAAAAATACAAAATGCTGATA
 TTTCAGAAGGAGGCATCTACCTGGGTTCTATGAGAAGCAAGAAGTAGCTGTGAAGACGTTCTGTGAGGG
 CAGCCCCAGTGCACAGCGGGAAGTCTTGTCTGCAAAGCAGCCGAGAGAACAGTCACTTGGTGACATTC
 TATGGGAGTGAGAGCCACAGGGGCCACTTGTGTTGTGTGTACCCCTCTGTGAGCAGACTCTGGAAGCGT
 GTTTGGATGTGCACAGAGGGGAAGATGTGGAAAATGAGGAAGATGAATTTGCCGAAATGCTCTGCATC
 TATATTTAAGGCTGTTCAAGAACTACACTTGTCTGTGGATACACCCACCAGGATCTGCAACCACAAAAC
 ATCTTAATAGATTCTAAGAAAGCTGCTCACCTGGCAGATTTTGATAAGAGCATCAAGTGGCTGGAGATC
 CACAGGAAGTCAAGAGAGATCTAGAGGACCTTGGACGGCTGGTCTCTATGTGGTAAAGAAGGGAAGCAT
 CTCATTTGAGGATCTGAAAGCTCAAAGTAAATGAAGAGGTGGTTCAACTTCTCCAGATGAGGAACTAAG
 GACCTCATTTCATGCTCTTCCATCCTGGGGAACATGTGAGGGACTGTCTGAGTGACCTGCTGGGTATC
 CCTTCTTTGGACTTGGGAGAGCCGCTATAGGACGCTTCGGAATGTGGGAAATGAATCCGACATCAAAC
 ACGAAAATCTGAAAGTGAGATCCTCAGACTACTGCAACCTGGGCCTTCTGAACATTCCAAAAGTTTTGAC
 AAGTGGACGACTAAGATTAATGAATGTGTATGAAAAAATGAATAAGTTTTATGAAAAAGAGGCAATT
 TCTACCAGAACACTGTGGGTGATCTGCTAAAGTTCATCCGGAATTTGGGAGAACACATTGATGAAGAAA
 GCATAAAAAGATGAAATTAATAATGGAGACCCTTCCCTGATTTTTCAGAAGACATTTCCAGATCTGGTG
 ATCTATGTCTACAAAACTACAGAACACAGAATATAGAAAGCATTTCCCCAAACCCACAGTCAAACA
 AGCCTCAGTGTGATGGAGCTGGTGGGCCAGTGGGTTGGCCAGCCCTGGGTGC

ACGCGTACGCGGCCGCTCGAGCAGAACTCATCTCAGAAGAGGATCTGGCAGCAAATGATATCCTGGATT
 ACAAGGATGACGACGATAAGGTTTAA

Protein Sequence: >RC214849 representing NM_021133
Red=Cloning site Green=Tags(s)

```
MESRDHNNPQEGPTSSSGRRAAVEDNHLLIKAVQNEVDVLVQQLLEGGANVNFQEEEGGWTPLHNAVQMS
REDIVELLRRHGADPVLRRKNGATPFIILAAIAGSVKLLKFLSKGADVNECDFYGFATFMEAAYGKVKKA
LKFLYKRGANVLRKTKEDQERLRKGGATALMDAAEKHVEVLKILLDEMGADVNACDNMGRNALIHAL
LSDDSDVEAITHLLLDHGADVNRGERGKTPLILAVEKKHGLVQRLLEQEHIEINDTSDGKTALLLA
VELKLLKIAELLCKRGASTDCGDLVMTARRNYDHSLVKVLVSHGAKEDFHPPAEDWKPQSSHWGAALKDL
HRIYRPMIGLKKFFIDEKYKIADTSEGGIYLGFIYKQEVAVKTFCEGSPRAQREVSVLQSSRENSHLVTF
YGSESHRGHLFVVCVTLCEQTLEACLDVHRGEDVENEDEFARNVLSIFKAVQELHLSCGYTHQDLQPQN
ILIDSKKAHLADFDSIKWAGDPQEVKRDLEDLGRVLVYVKKGSI SFEDLKAQSNEEVQLSPDEETK
DLIHRLFHPGEHVRDCLSDLLGHPFFWTWESRYRTLNRVGNESDIKTRKSESEILRLLQPGPSEHSKSF
KWTTKINECVMMKMNKFYEKRGNFYQNTVGDLLKFI RNLGEHIDEKHKMKLKGDPVSLYFQKTFPDLV
IYVYTKLQNTYRKHFPTQTHSPNKPQCDGAGGASGLASPGC
```

TRTRPLEQKLISEEDLAANDILDYKDDDDKV

Chromatograms: https://cdn.origene.com/chromatograms/ja2511_c03.zip

Restriction Sites: SgfI-MluI

Cloning Scheme:

Cloning sites used for ORF Shuttling:



* The last codon before the Stop codon of the ORF

ACCN: NM_021133

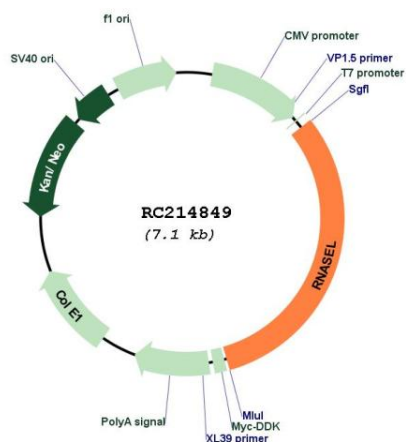
ORF Size: 2223 bp

OTI Disclaimer: The molecular sequence of this clone aligns with the gene accession number as a point of reference only. However, individual transcript sequences of the same gene can differ through naturally occurring variations (e.g. polymorphisms), each with its own valid existence. This clone is substantially in agreement with the reference, but a complete review of all prevailing variants is recommended prior to use. [More info](#)

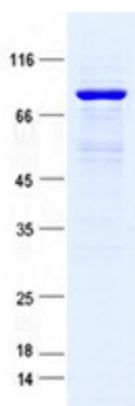
OTI Annotation: This clone was engineered to express the complete ORF with an expression tag. Expression varies depending on the nature of the gene.

Components:	The ORF clone is ion-exchange column purified and shipped in a 2D barcoded Matrix tube containing 10ug of transfection-ready, dried plasmid DNA (reconstitute with 100 ul of water).
Reconstitution Method:	<ol style="list-style-type: none">1. Centrifuge at 5,000xg for 5min.2. Carefully open the tube and add 100ul of sterile water to dissolve the DNA.3. Close the tube and incubate for 10 minutes at room temperature.4. Briefly vortex the tube and then do a quick spin (less than 5000xg) to concentrate the liquid at the bottom.5. Store the suspended plasmid at -20°C. The DNA is stable for at least one year from date of shipping when stored at -20°C.
Note:	Plasmids are not sterile. For experiments where strict sterility is required, filtration with 0.22um filter is required.
RefSeq:	NM_021133.4
RefSeq Size:	4258 bp
RefSeq ORF:	2226 bp
Locus ID:	6041
UniProt ID:	Q05823
Cytogenetics:	1q25.3
Domains:	pkinase, ANK, S_TKc, PUG
Protein Families:	Druggable Genome, Protein Kinase
MW:	83.5 kDa
Gene Summary:	This gene encodes a component of the interferon-regulated 2-5A system that functions in the antiviral and antiproliferative roles of interferons. Mutations in this gene have been associated with predisposition to prostate cancer and this gene is a candidate for the hereditary prostate cancer 1 (HPC1) allele. [provided by RefSeq, Jul 2008]

Product images:



Circular map for RC214849



Coomassie blue staining of purified RNASEL protein (Cat# [TP314849]). The protein was produced from HEK293T cells transfected with RNASEL cDNA clone (Cat# RC214849) using MegaTran 2.0 (Cat# [TT210002]).