

Product datasheet for **RC214847**

EEF1AKMT4-ECE2 (NM_014693) Human Tagged ORF Clone

Product data:

Product Type:	Expression Plasmids
Product Name:	EEF1AKMT4-ECE2 (NM_014693) Human Tagged ORF Clone
Tag:	Myc-DDK
Symbol:	EEF1AKMT4-ECE2
Synonyms:	ECE-2; ECE2
Mammalian Cell Selection:	Neomycin
Vector:	pCMV6-Entry (PS100001)
E. coli Selection:	Kanamycin (25 ug/mL)



[View online »](#)

**ORF Nucleotide
Sequence:**

>RC214847 representing NM_014693
 Red=Cloning site Blue=ORF Green=Tags(s)

TTTTGTAATACGACTCACTATAGGGCGGCCGGAATTCGTCGACTGGATCCGGTACCGAGGAGATCTGCC
 GCC**CGGATCGCC**

ATGGCCTCTCAGGGGCAGGTAGGGCGCCTCCGGAGTTACCGGAGCGGAAGTACCGGGTACCGGAAGTCG
 AGTACTGGGATCAGCGCTACCAAGGCGCAGCCGATTCTGCCCCCTACGATTGGTTCGGGGACTTCTCCTC
 CTTCCGTGCCCTCCTAGAGCCGGAGCTGCGGCCCGAGGACCGTATCCTTGTGCTAGGTTGCGGGAACAGT
 GCCCTGAGCTACGAGCTGTTCTCGGAGGCTTCCCTAATGTGACCAGTGTGGACTACTCATCAGTCGTGG
 TGGCTGCCATGCAGGCTCGCCATGCCCATGTGCCGCAGCTGCGCTGGGAGACCATGGATGTGCGGAAGCT
 GGACTTCCCCAGTGCTTCTTTTGTGTTGCTCGAGAAGGGCACGCTGGATGCCCTGCTGGCTGGGGAA
 CGAGATCCCTGGACCGTGTCTCTGAAGGTGTCCACACTGTGGACCAGGTGTTGAGTGAGGTGGGATTCC
 AGAAGGGGACAAGACAGCTGTTAGGCTCACGCACGCAGCTGGAGCTGGTCTTAGCAGGTGCCTCTCTACT
 GCTGGCTGCACTGCTTCTGGGCTGCCTTGTGGCCCTAGGGGTCCAGTACCACAGAGACCCATCCCACAGC
 ACCTGCCTTACAGAGGCCGTCATTTCGAGTGGCTGGAAAAATCCTGGAGTCCCTGGACCGAGGGGTGAGCC
 CCTGTGAGGACTTTTACCAGTTCCTGTGGGGCTGGATTCCGGAGGAACCCCTGCCCGATGGGCGTTC
 TCGCTGGAACACCTTCAACAGCCTCTGGGACAAAACCAGGCCATACTGAAGCACCTGCTTGAACACACC
 ACCTTCAACTCCAGCAGTGAAGCTGAGCAGAAGACACAGCGCTTCTACCTATCTTGCCTACAGGTGGAGC
 GCATTGAGGAGCTGGGAGCCAGCCACTGAGAGACCTCATTGAGAAGATTGGTGGTTGGAACATTACGGG
 GCCCTGGGACCAGGACAACCTTTATGGAGGTGTTGAAGGCAGTAGCAGGGACCTACAGGGCCACCCATT
 TTCACCGTCTACATCAGTGCCGACTCTAAGAGTCCAACAGCAATGTTATCCAGGTGACCCAGTCTGGGC
 TCTTTCTGCCCTCTCGGATTACTACTTAAACAGAAGTCCCAATGAGAAGTGTCTACTGCCTATCTGGA
 TTACATGGAGGAAGTGGGATGCTGCTGGGTGGGCGGCCACCTCCACGAGGGAGCAGATGCAGCAGGTG
 CTGGAGTTGGAGATACAGCTGGCCAACATCACAGTGCCCCAGGACCAGCGCGCAGGAGAGAAGATCT
 ACCACAAGATGAGCATTTCGGAGCTGCAGGCTCTGGCGCCCTCCATGGACTGGCTTGAGTTCCTGTCTTT
 CTTGCTGTACCATTGGAGTTGAGTGACTCTGAGCCTGTGGTGGTGTATGGGATGGATTATTTGCAGCAG
 GTGTCAGAGCTCATCAACCGCACGGAACCAAGCATCCTGAACAATTACCTGATCTGGAACCTGGTGCAA
 AGACAACCTCAAGCCTGGACCGACGCTTTGAGTCTGCACAAGAGAAGCTGCTGGAGACCTCTATGGCAC
 TAAGAAGTCTGTGTGCCGAGGTGGCAGACCTGCATCTCCAACACGGATGACGCCCTTGCTTTGCTTTG
 GGTCCCTCTTGTGAAGGCCACGTTTGACCGGCAAAGCAAAGAAATTGCAGAGGGGATGATCAGCGAAA
 TCCGGACCGCATTGAGGAGGCCCTGGGACAGCTGGTTTGGATGGATGAGAAGACCCGCCAGGCAGCCAA
 GGAGAAAGCAGATGCCATCTATGATATGATTGGTTTTCCAGACTTTATCCTGGAGCCCAAAGAGCTGGAT
 GATGTTTATGACGGGTACGAAATTTCTGAAGATTCTTTCTTCCAAAACATGTTGAATTTGTACAACCTCT
 CTGCCAAGGTTATGGCTGACCAGCTCCGCAAGCCTCCCAGCCGAGACAGTGGAGCATGACCCCCAGAC
 AGTGAATGCCTACTACCTTCCAACATAAGAATGAGATCGTCTTCCCCGCTGGCATCCTGCAGGCCCTTC
 TATGCCCGCAACCACCCCAAGGCCCTGAACCTCGGTGGCATCGGTGTGGTGTGGCCATGAGTTGACGC
 ATGCCCTTTGATGACCAAGGGCGCGAGTATGACAAAAGAAGGAACCTGCGGCCCTGGTGGCAGAATGAGTC
 CCTGGCAGCCTTCCGGAACCACACGGCCTGCATGGAGGAACAGTACAATCAATACCAGTCAATGGGGAG
 AGGCTCAACGGCCGACAGCCTGGGGGAGAACATTGCTGACAACGGGGGGCTGAAGGCTGCCTACAATG
 CTTACAAAAGCATGGCTGAGAAAGCATGGGGAGGAGCAGCAACTGCCAGCCGTGGGGCTACCAACACCA
 GCTCTTCTCGTGGGATTTGCCAGGTGTGGTGTGCGTCCGCACACCAGAGAGCTCTACGAGGGGCTG
 GTGACCGACCCCCACAGCCCTGCCCGTTCGCGTGTGGGCACTCTCTCAACTCCCGTACTTCTCG
 GCACTTCGGCTGCCCTGTGGCTCCCCATGAACCCAGGGCAGCTGTGTGAGGTGTGG

ACGCGTACGCGGCCGCTCGAGCAGAAACTCATCTCAGAAGAGGATCTGGCAGCAATGATATCCTGGATT
 ACAAGGATGACGACGATAAGGTTTAA

Protein Sequence: >RC214847 representing NM_014693
 Red=Cloning site Green=Tags(s)

MASPGAGRAPPPELLPERNCGYREVEYWDQRYQGAADSAPYDWFDFSSFRALLEPELREPEDRILVLGCGNS
 ALSYELFLGGFPNVTSDYSSVVAAMQARHAHVPQLRWETMDVRKLDFPSASFVVLKGTLDALLAGE
 RDPWTVSSEGVHTVDQVLSEVGFQKGTROQLLSRTQLELVLGASLLLAALLLGLVALGVQYHRDPSHS
 TCLTEACIRVAGKILES LDRGVSPCEDFYQFSCGGWIRRNPLPDGRSRWNTFNSLWDQNQAILKHLENT
 TFNSSSEAEQKTQRFYLSCLQVERIEELGAQPLRDLIEKIGGWNITGPWDQDNFMEVLKAVAGTYRATPF
 FTVYISADSKSSNSNVIQVDQSGFLPSRDYLLNRTANEKVL TAYLDYMEELGMLLGRRPTSTREQMQQV
 LELEIQLANITVPQDQRRDEEKIYHKMSISELQALAPSMDWLEFLSFLLSPLELSDSEPVVVYGM DYLQQ
 VSELINRTEPSILNNYL IWNLVQKTTSSLDRRFESAQEKLETL YGTTKSCVPRWQTCISNTDDALGFAL
 GSLFVKATFDRQSKEIAEGMISEIRTA FEEALGQLVWMDEKTRQAAEKADAIYDMIGFPDFILEPKELD
 DVYDGYEISEDSFFQNMLNLYNFSAKVMADQLRPPSRDQWSMTPQTVNAYYLPKNEIVFPAGILQAPF
 YARNHPKALNFGGIGVVMGHEL THAFDDQGREYDKEGNLRPWWQNESLA AFRNHTACMEEQYNQYQVNGE
 RLNGRQTLGENIADNGGLKAAYNAYKAWLRKHGEEQQLPAVGL TNHQLFFVGFQVWCSVRTPESSHEGL
 VTDPHSPARFRVLGTLNSRDFLRHFGCPVGSMPMNPQGQLCEVW

TRTRPLEQKLISEEDLAANDILDYKDDDDKV

Chromatograms: https://cdn.origene.com/chromatograms/mk8009_a10.zip

Restriction Sites: SgfI-MluI

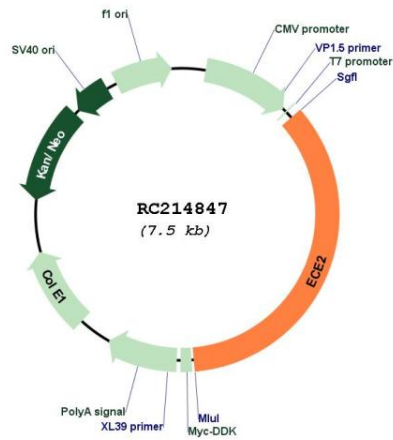
Cloning Scheme:

Cloning sites used for ORF Shuttling:

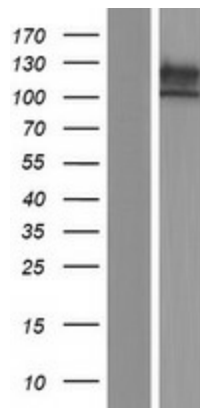


* The last codon before the Stop codon of the ORF

ACCN:	NM_014693
ORF Size:	2649 bp
OTI Disclaimer:	The molecular sequence of this clone aligns with the gene accession number as a point of reference only. However, individual transcript sequences of the same gene can differ through naturally occurring variations (e.g. polymorphisms), each with its own valid existence. This clone is substantially in agreement with the reference, but a complete review of all prevailing variants is recommended prior to use. More info
OTI Annotation:	This clone was engineered to express the complete ORF with an expression tag. Expression varies depending on the nature of the gene.
Components:	The ORF clone is ion-exchange column purified and shipped in a 2D barcoded Matrix tube containing 10ug of transfection-ready, dried plasmid DNA (reconstitute with 100 ul of water).
Reconstitution Method:	<ol style="list-style-type: none">1. Centrifuge at 5,000xg for 5min.2. Carefully open the tube and add 100ul of sterile water to dissolve the DNA.3. Close the tube and incubate for 10 minutes at room temperature.4. Briefly vortex the tube and then do a quick spin (less than 5000xg) to concentrate the liquid at the bottom.5. Store the suspended plasmid at -20°C. The DNA is stable for at least one year from date of shipping when stored at -20°C.
Note:	Plasmids are not sterile. For experiments where strict sterility is required, filtration with 0.22um filter is required.
RefSeq:	NM_014693.4
RefSeq Size:	3498 bp
RefSeq ORF:	2652 bp
Locus ID:	110599583
UniProt ID:	P0DPD6
Cytogenetics:	3q27.1
Domains:	Peptidase_M13
MW:	99.6 kDa
Gene Summary:	This gene represents naturally occurring readthrough transcription between adjacent genes eukaryotic translation elongation factor 1 alpha lysine methyltransferase 4 (GeneID: 110599564) and endothelin converting enzyme 2 (GeneID:9718). The readthrough transcript representing this gene encodes a fusion protein that shares sequence identity with each individual gene product. [provided by RefSeq, Jul 2017]

Product images:


Circular map for RC214847



Western blot validation of overexpression lysate (Cat# [LY415110]) using anti-DDK antibody (Cat# [TA50011-100]). Left: Cell lysates from untransfected HEK293T cells; Right: Cell lysates from HEK293T cells transfected with RC214847 using transfection reagent MegaTran 2.0 (Cat# [TT210002]).