

Product datasheet for RC214846

TMEM132A (NM_017870) Human Tagged ORF Clone

Product data:

Product Type:	Expression Plasmids
Product Name:	TMEM132A (NM_017870) Human Tagged ORF Clone
Tag:	Myc-DDK
Symbol:	TMEM132A
Synonyms:	GBP; HSPA5BP1
Mammalian Cell Selection:	Neomycin
Vector:	pCMV6-Entry (PS100001)
E. coli Selection:	Kanamycin (25 ug/mL)
ORF Nucleotide Sequence:	>RC214846 representing NM_017870 Red=Cloning site Blue=ORF Green=Tags(s)

TTTTGTAATACGACTCACTATAGGGCGGCCGGAATTCGTCGACTGGATCCGGTACCGAGGAGATCTGCC
GCC**CGATCGCC**

ATGTGCGCGGGATGGCCGGTCGCACAACAGCGGCCCTCGGGGGCCCTACGGCCCTGGCTCTGCCTCC
TGGTGGCCCTCGCCCTGGACGTCGTGAGAGTGGACTGTGGCCAGGCTCCCTGGACCCTGTCTACCTGCC
GGCAGCCCTGGAGCTCCTAGACGCCCTGAACACTTCCGTGTGCAGCAGGTGGCCACTACCCACCTGCC
AACTCCTCTCTGAGCTCCGATCTGAGACCTTTCTGCTCTACAGCCCTGGCCAGGGCCAGCCACTTC
TCCGGGCTCCTACCCACCTTTTGGCACTCAGCAGGTGGTCCCCCTCGAGTCACTGAGCCCCACCAACG
GCCAGTCCCATGGGACGTGCGGGCCGTTTCAGTGAAGCGGCTGTGACTCCAGCAGAGCCCTACGCCCGG
GTTCTCTTCCACCTCAAAGGGCAGGATTGGCCACCAGGGTCTGGCAGCCTGCCCTGTGCCGGCTCCATG
CCACACACCCTGCCGGCACTGCTACCAAGCCTGCCGCTTCCAGCCATCCCTGGGCGCCTGCGTGGTGG
GCTGGAGCTTCCCTCGCACTGGTTCTCACAGGCCCTCCACCACACGGGCGGAGCTGGCCTACACGCTTGA
CCTGCAGCTGAGGGCCCTGGGGCTGTGGCTCCGGCGAGGAGAACGACCTGGGGAGCAGGCCCTCCAG
TGGGGGTGTGGAGCTGCGCCAGCAGACCCCCGAGTACCAGGAGGTACCTCTGGACGAGGCTGTGAC
TCTGCGGGTGCCTGACATGCCAGTGGCCCGGCCAGCTCTTTAGTGCTACCTCCTGCTTCGGCACAAC
TTCACAGCCAGCCTCCTGACCCTGCGGATCAAGGTGAAGAAGGGCTGCATGTGACAGCCGCCCGCCAG
CCAGCCCACTCTGGACTGCCAAGCTGGACCGCTTCAAGGGCTCCAGGCACCACACCCTCATCAC
CTGCCACCGTGCTGGGCTCACAGAGCCAGATTCCAGCAGTCCCCTTGAAGTGTCTGAGTTCTATGGGTG
GACTTTGTGGTGGAGAATAGCACTGGTGGGGCGTAGCGGTCACTCGCCCGTCACTGCGCAGCTGGAGT
ACCCAGGCCAGGCCCTGAAGCAGAGAAGGACAAAATGGTGTGGGAAATCCTGGTGTCTGAGCGGGACAT
CAGAGCCCTTATCCCACTGGCCAAGGCTGAGGAGCTGGTGAATACAGCACCCTGACTGGAGTGCCCGAG
CATGTCCCGTGCCTTGTCACTGTGGACGGCGGGGGCCCTGGTGGAGGTGACAGAGCATGTCCGCT
GCGAGTCTGCCAACACAGGCTCTGCAGTGTCTGAGGCCTGTGATGCCGTGTTCTGGCTGGCAAGGA
GAGCCGGGGCGCCGGGGGTGCGAGTGGACTTCTGGTGGCGCCGCTCCGCGCCTCGTGGCTGACC



[View online >](#)

GTGTGGGCCCCCTGCTACCGCTGCGTATCGAGCTCACCGACACCACCCTCGAGCAGGTCCGCGGCTGGA
 GGGTACCTGGCCCTGCTGAAGGGCTGCGGAACCCGCTGCAGAGGCGTCGGATGAGGCCGAGCGCGCGC
 CCGTGGCTGCCACCTGCAGTACCAGCGGGCCGGTGTGCGCTTCTCGCCCCCTCGCGGCCACCCGCTG
 GACGGCGGCCCGCCCTCACGCACCTGCTTGGCCCCGACTGGTGCTAGACGTGTCCACCTCGTGGCGC
 CACACGCCCGCGTGTGGACTCGCGTGTAGCCTCTTGGAGGGTGGCCGTGTCTGGTGGGCCGGGAGCC
 CGGTGTACCTCCATTGAGGTGCGTTCCCCTGTCTGACTCCATCTGGGGGAGCAGGCCGTGGCTGTG
 ACGGACGACAAGGTCTCAGTGTGGAGTGAAGGTGCAGCCAGTATGGGCATCTCGCTGACCTTGAGCC
 GGGGCACTGCCACCCCGGGGAGGTACAGCTACGTGCTGGGCACAGTCAGCCCTTCCCGCCCAAGCA
 GGAGGTGGCCCTCTCCCTATGGCTGTCTTCTCTGATCACACTGTGGCCCCAGCTGAGCTTACGACCGC
 CGTGACCTGGGACTGTCCGTCTCAGCCGAGGAGCCTGGTCCATCCTGCCAGCTGAGGAGCAGGGTGCC
 AGCTCGGGGTGGTGGTGTGAGTGGGCAGGCGCCGAGGGGCTGCCGCTGCATGTGGCTTGCACCCGCCGA
 GCCCTGCCCGGGGCCGCCACCGTGTGCCTCTGGCCTTGGCACCGCCTGGCTGGGGTGGCCCCCTGCC
 TCCACTCCAGCCCTGCTCTCCATCCAGCCCTGCTTGGAGCCCACCAGCCACAGAAGCCACCATGGGTG
 GTAACCGCAGGTGGCAGGCAGTGTGGGGCAACACAGGTGTGAGGGGCAAGTTTGTAGCGGGCAGAGGA
 GGAGGCCAGGAAGGAGGAGACCAAGCCAGGGAGGAGGAGGAGGAAGAGGAGGAGGATGTTCCCTGCC
 CCTCAGCATGTACTGAGCTAGAGCTGGGCATGTACGCCCTGCTGGGAGTCTTCTGCGTGGCCATCTTCA
 TCTTCTGGTCAATGGTGTGGTCTTCTGCTGCGCTATCAGCGCAAGAACCCTCCCGACAGTGCCACTGA
 CCCCACCTCCCCCAGCCCCACAACCTGGGTCTGGCTGGGCACTGACCAGGAGAACTGAGCCGCCAGCTG
 GACCGGACGTCCCTGGCCCGCCCAAGGGGAGGGGAGCTGCCCTGTGAGAGTGGGGGAGGAGGGGAGG
 CCCCTACCCTGGCCCTGGCCCTCTGGGGGACCACCAGCTCCTCAAGCACCCCTGGCCGAAAGGAGGC
 TGGGGGGCGCGGAAGCGAGTAGAGTTTGTGACATTTGCGCCAGCCCTCCAGCCAGTCACTGAGGAG
 CCTGTAGGGGCCCTGCTGTGCAGTCCATCCTTGTGGCAGGCGAGGAGGACATCCGCTGGGTGTGAGG
 ACATGGGGCTGAAGGACCCTGAGGAGCTTCGCAACTACATGGAGAGGATCCGGGGCAGCTCC

ACGCGTACGCGGCCGCTCGAGCAGAACTCATCTCAGAAGAGGATCTGGCAGCAATGATATCTGGATT
 ACAAGGATGACGACGATAAGGTTTAA

Protein Sequence:

>RC214846 representing NM_017870
 Red=Cloning site Green=Tags(s)

MCARMAGRTTAAPRGPYPWLCLLVALALDVVRVDCGQAPLDPVYLPAALELLDAPEHFRVQQVGHYPPA
 NSSLSRSETFLLLQPWPRAQPLLRASYPPFATQQVVPVPRVTEPHQRVPVWDVRAVSVEAAVTPAEPYAR
 VLFHLKGQDWPPGSGSLPCARLHATHPAGTAHQACRFQPSLGACVVELELPSHWFQASTTRAELAYTLE
 PAAEGPGGCGSGEENDPGEQALPVGGVELRPADPPQYQEVPLDEAVTLRVPDMPVRPQGLFSATLLLRHN
 FTASLLTLRIKVKKGLHVTAARPAQPTLWAKLDRFKSRHHTTLITCHRAGL TEPDSSSPELSEFLWV
 DFVVENSTGGGVAVTRPVTWQLEYPGQAPEAEKDKMWWEILVSEDIRALIPLAKAEELVNTAPLTGVPQ
 HVPVRLVTVDGGALVEVTEHVGESANTQVLQVSEACDAVFVAGKESRGARGVRVDFWWRRLRASLRLT
 VWAPLLPLRIELTDTTLEQVRGWRVPGPAEGPAEPAEASDEAERRARGCHLQYQRAGVRFAPFAAHL
 DGGRRLLHLLGPDWLLDVSHLVAPHARVLSRVASLEGGRRVVVGREPGVTSIEVRSPLSDSILGEQALAV
 TDDKVSVLELRVQPMGISLTLSRGTAHPGEVATCWAQSALPAPKQEVALSLWLSFSDHTVAPAELYDR
 RDLGLSVSAEEPGAILPAEEQGAQLGVVVSAGAEGLPLHVALHPPEPCRRRHRVPLASGTAWLGLPPA
 STPAPALPSSPAWSPATEATMGGRQVAGSVGGNTGVRGKFERAEERKEETEAREEEEEEMVPA
 PQHVTELELGMYALLGVFCVAIFIFLVNGVVFVLRVQRKEPPDSATDPTSPQPHNWWLGTDQEELSRQL
 DRQSPGPKGEGSCPCESGGGGEAPTLAPGPPGGTTSSSSTLARKEAGRRKRVEFTVFAPAPPAQSPEE
 PVGAPAVQSILVAGEEDIRWVCEMDMLKDPEELRNYMERIRGSS

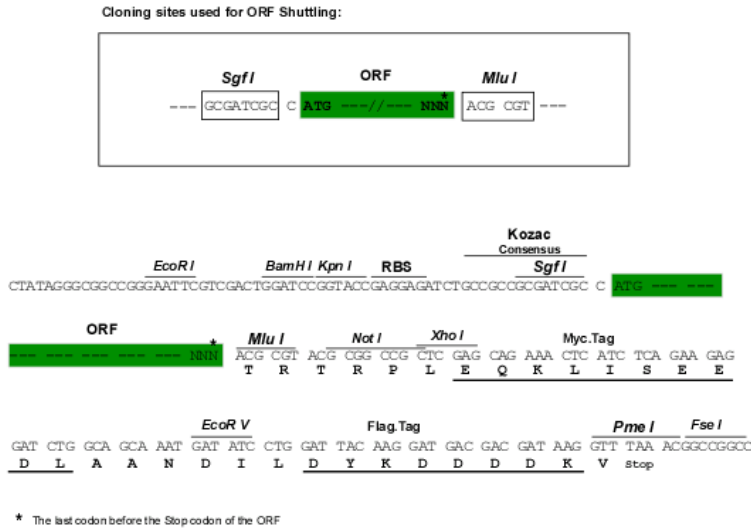
TRTRPLEQKLISEEDLAANDILDYKDDDDKV

Chromatograms:

https://cdn.origene.com/chromatograms/mk8009_f07.zip

Restriction Sites:

Sgfl-Mlul

Cloning Scheme:

ACCN:

NM_017870

ORF Size:

3072 bp

OTI Disclaimer:

Due to the inherent nature of this plasmid, standard methods to replicate additional amounts of DNA in E. coli are highly likely to result in mutations and/or rearrangements. Therefore, OriGene does not guarantee the capability to replicate this plasmid DNA. Additional amounts of DNA can be purchased from OriGene with batch-specific, full-sequence verification at a reduced cost. Please contact our customer care team at custsupport@origene.com or by calling 301.340.3188 option 3 for pricing and delivery.

The molecular sequence of this clone aligns with the gene accession number as a point of reference only. However, individual transcript sequences of the same gene can differ through naturally occurring variations (e.g. polymorphisms), each with its own valid existence. This clone is substantially in agreement with the reference, but a complete review of all prevailing variants is recommended prior to use. [More info](#)

OTI Annotation:

This clone was engineered to express the complete ORF with an expression tag. Expression varies depending on the nature of the gene.

Components:

The ORF clone is ion-exchange column purified and shipped in a 2D barcoded Matrix tube containing 10ug of transfection-ready, dried plasmid DNA (reconstitute with 100 ul of water).

Reconstitution Method:

1. Centrifuge at 5,000xg for 5min.
2. Carefully open the tube and add 100ul of sterile water to dissolve the DNA.
3. Close the tube and incubate for 10 minutes at room temperature.
4. Briefly vortex the tube and then do a quick spin (less than 5000xg) to concentrate the liquid at the bottom.
5. Store the suspended plasmid at -20°C. The DNA is stable for at least one year from date of shipping when stored at -20°C.

RefSeq: [NM_017870.4](#)

RefSeq Size: 3486 bp

RefSeq ORF: 3075 bp

Locus ID: 54972

UniProt ID: [Q24JP5](#)

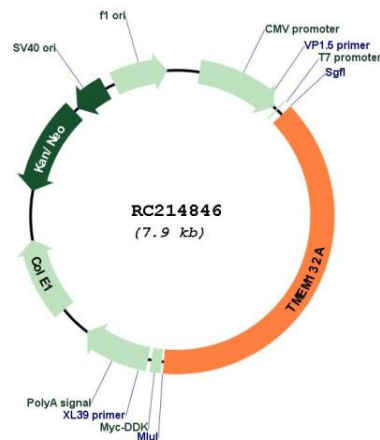
Cytogenetics: 11q12.2

Protein Families: Transmembrane

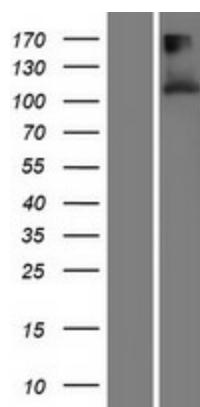
MW: 110 kDa

Gene Summary: This gene encodes a protein that is highly similar to the rat Grp78-binding protein (GBP). Alternatively spliced transcript variants encoding different isoforms have been described. [provided by RefSeq, Jul 2008]

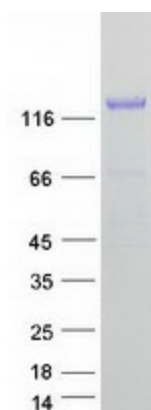
Product images:



Circular map for RC214846



Western blot validation of overexpression lysate (Cat# [LY413492]) using anti-DDK antibody (Cat# [TA50011-100]). Left: Cell lysates from untransfected HEK293T cells; Right: Cell lysates from HEK293T cells transfected with RC214846 using transfection reagent MegaTran 2.0 (Cat# [TT210002]).



Coomassie blue staining of purified TMEM132A protein (Cat# [TP314846]). The protein was produced from HEK293T cells transfected with TMEM132A cDNA clone (Cat# RC214846) using MegaTran 2.0 (Cat# [TT210002]).