

Product datasheet for **RC214844**

CLECSF6 (CLEC4A) (NM_194448) Human Tagged ORF Clone

Product data:

Product Type: Expression Plasmids
Product Name: CLECSF6 (CLEC4A) (NM_194448) Human Tagged ORF Clone
Tag: Myc-DDK
Symbol: CLECSF6
Synonyms: CD367; CLECSF6; DCIR; DDB27; HDCGC13P; hDCIR; LLIR
Mammalian Cell Selection: Neomycin
Vector: pCMV6-Entry (PS100001)
E. coli Selection: Kanamycin (25 ug/mL)
ORF Nucleotide Sequence: >RC214844 representing NM_194448
Red=Cloning site Blue=ORF Green=Tags(s)

TTTTGTAATACGACTCACTATAGGGCGGCCGGAATTCGTCGACTGGATCCGGTACCGAGGAGATCTGCC
GCC**CGATCGCC**

ATGACTTCGAAATCACTTATGCTGAAGTGAGGTTCAAAAATGAATTCAGTCCTCAGGCATCAACACAG
CCTCTTCTGCAGAGACAGCCTGGAGCTGTTGCCAAAGAATTGGAAGTCATTTAGTTCCAAGTCTACTT
TATTTCTACTGAATCAGCATCTGGCAAGACAGTGAGAAGGACTGTGCTAGAATGGAGGCTCACCTGCTG
GTGATAAACACTCAAGAAGAGCAGGATTCATCTCCAGAATCTGCAAGAAGAATCTGCTATTTTGTGG
GGCTCTCAGATCCAGAAGGTCAGCGACATTGGCAATGGGTTGATCAGACACCATAACAATGAAAGTCCAC
ATTCTGGCATCCACGTGAGCCCAGTGATCCCAATGAGCGCTGCGTTGTGCTAAATTTTCGTAATCACCC
AAAAGATGGGGCTGGAATGATGTTAATTGTCTTGGTCCTCAAAGGTCAGTTTGTGAGATGATGAAGATCC
ACTTA

ACGCGTACGCGGCCGCTCGAGCAGAACTCATCTCAGAAGAGGATCTGGCAGCAAATGATATCCTGGATT
ACAAGGATGACGACGATAAGGTTTAA

Protein Sequence: >RC214844 representing NM_194448
Red=Cloning site Green=Tags(s)
MTSEITYAEVRFKNEFKSSGINTASSAETAWSCCPKNWKFSFSSNCYFISTESASWQDSEKDCARMEHLL
VINTQEEQDFIFQNLQEESAYFVGLSDPEGQRHWQWVDQTPYNESSTFWHPREPSDPNERCVLNFRRKSP
KRWGWNDVNCLGPQRSVCEMMKIHL

TRTRPLEQKLISEEDLAANDILDYKDDDDKV

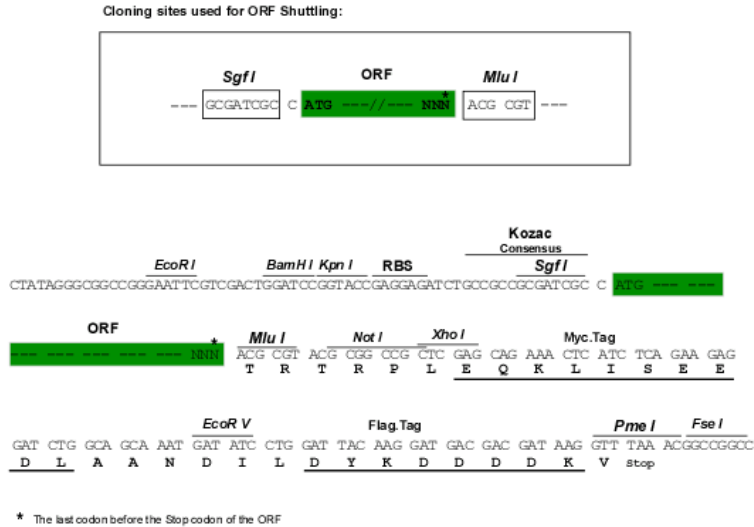
Chromatograms: https://cdn.origene.com/chromatograms/ja1451_b09.zip



[View online »](#)

Restriction Sites: SgfI-MluI

Cloning Scheme:



ACCN: NM_194448

ORF Size: 495 bp

OTI Disclaimer: Due to the inherent nature of this plasmid, standard methods to replicate additional amounts of DNA in E. coli are highly likely to result in mutations and/or rearrangements. Therefore, OriGene does not guarantee the capability to replicate this plasmid DNA. Additional amounts of DNA can be purchased from OriGene with batch-specific, full-sequence verification at a reduced cost. Please contact our customer care team at custsupport@origene.com or by calling 301.340.3188 option 3 for pricing and delivery.

The molecular sequence of this clone aligns with the gene accession number as a point of reference only. However, individual transcript sequences of the same gene can differ through naturally occurring variations (e.g. polymorphisms), each with its own valid existence. This clone is substantially in agreement with the reference, but a complete review of all prevailing variants is recommended prior to use. [More info](#)

OTI Annotation: This clone was engineered to express the complete ORF with an expression tag. Expression varies depending on the nature of the gene.

Components: The ORF clone is ion-exchange column purified and shipped in a 2D barcoded Matrix tube containing 10ug of transfection-ready, dried plasmid DNA (reconstitute with 100 ul of water).

- Reconstitution Method:**
1. Centrifuge at 5,000xg for 5min.
 2. Carefully open the tube and add 100ul of sterile water to dissolve the DNA.
 3. Close the tube and incubate for 10 minutes at room temperature.
 4. Briefly vortex the tube and then do a quick spin (less than 5000xg) to concentrate the liquid at the bottom.
 5. Store the suspended plasmid at -20°C. The DNA is stable for at least one year from date of shipping when stored at -20°C.

Note: Plasmids are not sterile. For experiments where strict sterility is required, filtration with 0.22um filter is required.

RefSeq: [NM_194448.2](#)

RefSeq Size: 1075 bp

RefSeq ORF: 498 bp

Locus ID: 50856

UniProt ID: [Q9UMR7](#)

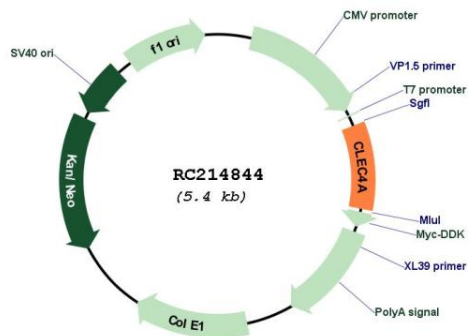
Cytogenetics: 12p13.31

Protein Families: Druggable Genome, Transmembrane

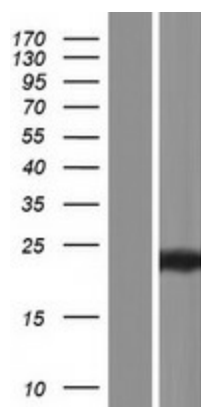
MW: 19.1 kDa

Gene Summary: This gene encodes a member of the C-type lectin/C-type lectin-like domain (CTL/CTLD) superfamily. Members of this family share a common protein fold and have diverse functions, such as cell adhesion, cell-cell signalling, glycoprotein turnover, and roles in inflammation and immune response. The encoded type 2 transmembrane protein may play a role in inflammatory and immune response. Multiple transcript variants encoding distinct isoforms have been identified for this gene. This gene is closely linked to other CTL/CTLD superfamily members on chromosome 12p13 in the natural killer gene complex region. [provided by RefSeq, Jul 2008]

Product images:



Circular map for RC214844



Western blot validation of overexpression lysate (Cat# [LY405133]) using anti-DDK antibody (Cat# [TA50011-100]). Left: Cell lysates from untransfected HEK293T cells; Right: Cell lysates from HEK293T cells transfected with RC214844 using transfection reagent MegaTran 2.0 (Cat# [TT210002]).