

Product datasheet for RC214838

GCET1 (SERPINA9) (NM_001042518) Human Tagged ORF Clone

Product data:

Product Type:	Expression Plasmids
Product Name:	GCET1 (SERPINA9) (NM_001042518) Human Tagged ORF Clone
Tag:	Myc-DDK
Symbol:	GCET1
Synonyms:	GCET1; SERPINA11; SERPINA11b
Mammalian Cell Selection:	Neomycin
Vector:	pCMV6-Entry (PS100001)
E. coli Selection:	Kanamycin (25 ug/mL)
ORF Nucleotide Sequence:	>RC214838 representing NM_001042518 Red=Cloning site Blue=ORF Green=Tags(s)

TTTTGTAATACGACTCACTATAGGGCGGCCGGAATTCGTCGACTGGATCCGGTACCGAGGAGATCTGCC
GCC**CGATCGCC**

ATGCAAGGACAGGGCAGGAGAAGAGGAACCTGCAAAGACATATTTTGTCCAAAATGGCATCTTACCTTT
ATGGAGTACTCTTTGCTGTTGGCCTCTGTGCTCCAATCTACTGTGTGTCCCGGCCAATGCCCCAGTGC
ATACCCCGCCCTTCTCCACAAAGAGCACCCCTGCCTCACAGGTGTATCCCTCAACACCGACTTTGCC
TTCCGCCTATACCGCAGGCTGGTTTTGGAGACCCGAGTCAGAACATCTTCTTCCCTGCGAGGATCA
ACAGCCATGTGAAAAAGAAGACCCAAGGAAGGTTGTAGACATAATCCAAGGCCTTGACCTTCTGACGGC
CATGGTTCTGGTGAACCACATTTCTTTAAAGCCAAGTGGGAGAAGCCCTTTCACCTGAATATACAAGA
AAGAACTCCCATTCCTGGTGGCGAGCAGGTCACTGTGCATGTCCCATGATGCACCAGAAGAGCAGT
TCGCTTTTGGGGTGGATACAGAGCTGAAGTCTTTGTGCTGCAGATGGATTACAAGGGAGATGCCGTGGC
CTTCTTTGTCCTCCCTAGCAAGGCAAGATGAGGCAACTGGAACAGGCCTTGTCAGCCAGAACACTGAGA
AAGTGGAGCCACTCACTCCAGAAAAGGTGGATAGAGGTGTTTATCCCGAGATTTTCCATTTCTGCCTCT
ACAATCTGGAAACCATCCTCCGAAGATGGGCATCCAAAATGTCTTTGACAAAAATGCTGATTTTTCTGG
AATTGCAAAGAGAGACTCCCTGCAGTCTTAAGCAACCCACAAGGCTGTGCTGGATGTCAGTGAAGAG
GGCACTGAGGCCACAGCAGCTACCACCACCAAGTTCATAGTCCGATCGAAGGATGGCCCTTTACTTCA
CTGTCTCCTTCAATAGGACCTTCTGATGATTACAAAATAAGCCACAGACGGTATTCTCTTTCTAGG
GAAAGTGGAAAATCCCACTAAATCC

ACGCGTACGCGGCCGCTCGAGCAGAAACTCATCTCAGAAGAGGATCTGGCAGCAAATGATATCCTGGATT
ACAAGGATGACGACGATAAGGTTTAA



[View online »](#)

Protein Sequence: >RC214838 representing NM_001042518
Red=Cloning site Green=Tags(s)

MQQGRRRGTCCKDIFCSKMASYLYGVLFVAVGLCAPIYCVSPANAPSAYPRPSSTKSTPASQVYSLNTDFA
 FRLYRRLVLETPSQNIFFSPARINSHVKKKTQGKVVDIIQGLDLLTAMVLVNHIFFKAKWEKPFHPEYTR
 KNFPFLVGEQVTVHVPMHQEQFAFGVDTELNCFVLQMDYKGDVAFFVLP SKGKMRQLEQALSARTLR
 KWSHSLQKRWIEVFIPRFISASYNLETILPKMGIQNVFDKNADFSGIAKRDSLQVSKATHKAVLDVSEE
 GTEATAATTTKFIVRSKDGPSTVTSFNRTFLMMITNKATDGI LFLGKVENPTKS

TRTRPLEQKLISEEDLAANDILDYKDDDDKV

Chromatograms: https://cdn.origene.com/chromatograms/mk8053_a02.zip

Restriction Sites: SgfI-MluI

Cloning Scheme:

Cloning sites used for ORF Shuttling:



* The last codon before the Stop codon of the ORF

ACCN: NM_001042518

ORF Size: 1005 bp

OTI Disclaimer: The molecular sequence of this clone aligns with the gene accession number as a point of reference only. However, individual transcript sequences of the same gene can differ through naturally occurring variations (e.g. polymorphisms), each with its own valid existence. This clone is substantially in agreement with the reference, but a complete review of all prevailing variants is recommended prior to use. [More info](#)

OTI Annotation: This clone was engineered to express the complete ORF with an expression tag. Expression varies depending on the nature of the gene.

Components: The ORF clone is ion-exchange column purified and shipped in a 2D barcoded Matrix tube containing 10ug of transfection-ready, dried plasmid DNA (reconstitute with 100 ul of water).

Reconstitution Method:

1. Centrifuge at 5,000xg for 5min.
2. Carefully open the tube and add 100ul of sterile water to dissolve the DNA.
3. Close the tube and incubate for 10 minutes at room temperature.
4. Briefly vortex the tube and then do a quick spin (less than 5000xg) to concentrate the liquid at the bottom.
5. Store the suspended plasmid at -20°C. The DNA is stable for at least one year from date of shipping when stored at -20°C.

Note: Plasmids are not sterile. For experiments where strict sterility is required, filtration with 0.22um filter is required.

RefSeq: [NM_001042518.1](#), [NP_001035983.1](#)

RefSeq Size: 1551 bp

RefSeq ORF: 954 bp

Locus ID: 327657

UniProt ID: [Q86WD7](#)

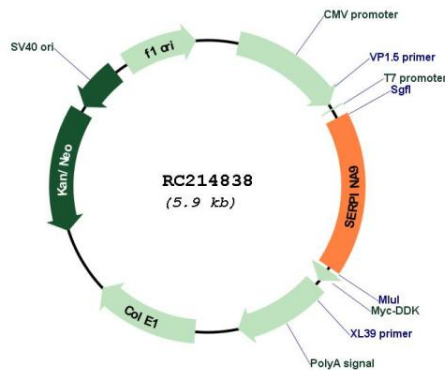
Cytogenetics: 14q32.13

Protein Families: Druggable Genome, Secreted Protein, Transmembrane

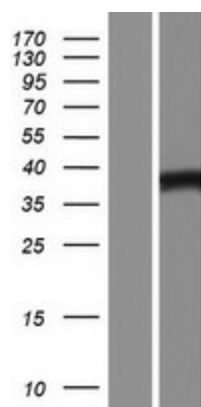
MW: 37.6 kDa

Gene Summary: Protease inhibitor that inhibits trypsin and trypsin-like serine proteases (in vitro). Inhibits plasmin and thrombin with lower efficiency (in vitro).[UniProtKB/Swiss-Prot Function]

Product images:



Circular map for RC214838



Western blot validation of overexpression lysate (Cat# [LY420956]) using anti-DDK antibody (Cat# [TA50011-100]). Left: Cell lysates from untransfected HEK293T cells; Right: Cell lysates from HEK293T cells transfected with RC214838 using transfection reagent MegaTran 2.0 (Cat# [TT210002]).