

Product datasheet for **RC214829**

MINA53 (MINA) (NM_001042533) Human Tagged ORF Clone

Product data:

Product Type:	Expression Plasmids
Product Name:	MINA53 (MINA) (NM_001042533) Human Tagged ORF Clone
Tag:	Myc-DDK
Symbol:	MINA53
Synonyms:	JMJD10; MDIG; MINA; MINA53; NO52; ROX
Mammalian Cell Selection:	Neomycin
Vector:	pCMV6-Entry (PS100001)
E. coli Selection:	Kanamycin (25 ug/mL)



[View online »](#)

ORF Nucleotide Sequence:

>RC214829 ORF sequence
 Red=Cloning site Blue=ORF Green=Tags(s)

TTTTGTAATACGACTCACTATAGGGCGGCCGGGAATTCGTCGACTGGATCCGGTACCGAGGAGATCTGCC
 GCC**CGGATCGCC**

ATGCCAAAGAAAGCAAAGCCTACAGGGAGTGGGAAGGAAGAGGGCCGGCTCCCTGTAAGCAGATGAAGT
 TAGAAGCAGCTGGGGGGCTTCAGCTTTAACTTTGACAGTCCCAGTAGTCTCTTTGAAAGTTTAACTCTC
 GCCCATCAAGACAGAGACTTTTTTCAAGGAATTCTGGGAGCAGAAGCCCTTCTCATTAGAGAGATGAC
 CCTGCACTGGCCACATACTATGGGTCCCTGTTCAAGCTAACAGATCTGAAGAGTCTGTGCAGCCGGGGGA
 TGTACTATGGAAGAGATGTAATGTCTGCCGTGTGCAATGGGAAGAAGAAGGTTTTAAATAAAGATGG
 CAAAGCACACTTTCTCAGCTGAGAAAAGATTTTGATCAGAAAAGGGCAACGATTCAGTTTCACCAACCT
 CAGAGATTTAAGGATGAGCTTTGGAGGATCCAGGAGAAGCTGGAATGTTACTTTGGCTCCTTGGTTGGCT
 CGAATGTGTACATAACTCCCGCAGGATCTCAGGGCCTGCCGCCCATATGATGATGTCGAGTTTTTCAT
 CCTGCAGCTGGAGGGAGAGAAACTGGCGCCTCTACCACCCACTGTGCCCTGGCAGCAGAGTACAGC
 GTGGAGGCCGAGGAAAGGATCGGCAGGCCGGTGCATGAGTTTATGCTGAAGCCGGGTGATTTGTTGACT
 TTCCCAGAGGAACCATTATCAAGCGGACACTCCTGCGGGGCTGGCCACTCGACTCACGTGACCATCAG
 CACCTACCAGAACAATTCATGGGGAGATTTCTTTTGGATACCATCTCGGGGCTTGATTTGATACTGCA
 AAGGAAGACGTGGAGTTACGGACCGGCATACCCCGCAGCTGCTCCTGCAGGTGGAATCCACAACGTGTG
 CTAACAAGACGATTAAGTGGCTTCTGAGGACACTTGCAGACCGGCTGGAGGGCACCAGAAAGTGCATTC
 CTCAGACATGAAGAAGGATTTTATTATGCACAGACTCCCCCTTACTCTGCGGGAGATGGGGCAGAGCTG
 TCAACACCAGGTGAAAGTTACCGAGGCTGGACAGTGTAGTGAGACTGCAGTTTAAAGACCACATTGTCC
 TCACAGTACTGCCGGATCAAGATCAATCTGATGAAACTCAAGAAAAGATGGTGTACATCTATCCTCCT
 AAAGAATAGTAGAGAGACACATGATGGGAAATGAGGAGGAAACAGAGTTTCATGGACTTCGCTTCCCT
 TTGTCACATTTGGATGCACTGAAGCAAATTTGGAATAGTCCAGCTATTTCTGCAAGGACCTGAAACTTA
 CTACAGATGAGGAAAAGGAAAGCCTGGTATTATCCCTCTGGACAGAATGTTTAATCAAGTAGTC

ACGCGTACGCGGCCGCTCGAGCAGAAACTCATCTCAGAAGAGGATCTGGCAGCAAATGATATCCTGGATT
 ACAAGGATGACGACGATAAGGTTTAA

Protein Sequence:

>RC214829 protein sequence
 Red=Cloning site Green=Tags(s)

MPKKAKPTGSGKEEGPAPCKQMKLEAAGGPSALNFDSPSSLFESLISPIKTETFFKEFWQKPLLIQRDD
 PALATYYGSLFKLTDLKSLCSRGMYYGRDVNVCRCVNGKKVNLKDGKAHFLQLRKDFDQKRATIQFHQP
 QRFKDELWRIQEKLECYFGSLVGSNVYITPAGSQGLPPHYDDVEVFILQLEGEKHWRLYHPTVPLAREYS
 VEAERIGRPVHEFMLKPGDLLYFPRGTIHQADTPAGLAHSTHVTISTYQNNSWGDFLLDTISGLVFDTA
 KEDVELRTGIPRQLLQVESTTVATRRLSGFLRTLADRLEGTKELLSSDMKKDFIMHRLPPYSAGDGAEL
 STPGGKLPRLDSVRLQFKDHIVLTVLPDQDQSDQETQEKMYIYHSLKNSRETHMMGNEEETFHGLRFP
 LSHLDALKQIWNSPAISVKDLKLTDEEKESLVLVSLWTECLIQVV

TRTRPLEQKLISEEDLAANDILDYKDDDDKV

Chromatograms:

https://cdn.origene.com/chromatograms/mk6539_f11.zip

Restriction Sites:

Sgfl-Mlul

Cloning Scheme:


ACCN: NM_001042533

ORF Size: 1395 bp

OTI Disclaimer: The molecular sequence of this clone aligns with the gene accession number as a point of reference only. However, individual transcript sequences of the same gene can differ through naturally occurring variations (e.g. polymorphisms), each with its own valid existence. This clone is substantially in agreement with the reference, but a complete review of all prevailing variants is recommended prior to use. [More info](#)

OTI Annotation: This clone was engineered to express the complete ORF with an expression tag. Expression varies depending on the nature of the gene.

Components: The ORF clone is ion-exchange column purified and shipped in a 2D barcoded Matrix tube containing 10ug of transfection-ready, dried plasmid DNA (reconstitute with 100 ul of water).

Reconstitution Method:

1. Centrifuge at 5,000xg for 5min.
2. Carefully open the tube and add 100ul of sterile water to dissolve the DNA.
3. Close the tube and incubate for 10 minutes at room temperature.
4. Briefly vortex the tube and then do a quick spin (less than 5000xg) to concentrate the liquid at the bottom.
5. Store the suspended plasmid at -20°C. The DNA is stable for at least one year from date of shipping when stored at -20°C.

RefSeq: [NM_001042533.2](#), [NP_001035998.1](#)

RefSeq Size: 5342 bp

RefSeq ORF: 1398 bp

Locus ID: 84864

UniProt ID: [Q8IUJ8](#)

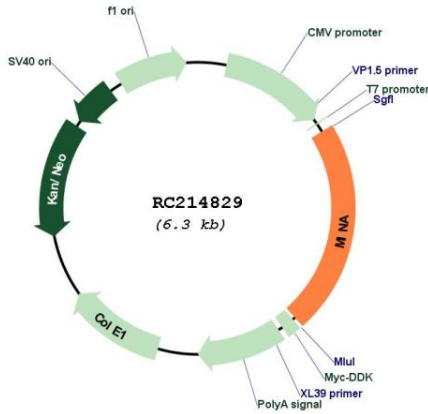
Cytogenetics: 3q11.2

Protein Families: Druggable Genome

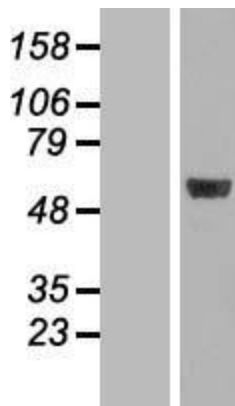
MW: 52.8 kDa

Gene Summary: MINA is a c-Myc (MYC; MIM 190080) target gene that may play a role in cell proliferation or regulation of cell growth. (Tsuneoka et al., 2002 [PubMed 12091391]; Zhang et al., 2005 [PubMed 15897898]).[supplied by OMIM, May 2008]

Product images:



Circular map for RC214829



Western blot validation of overexpression lysate (Cat# [LY420967]) using anti-DDK antibody (Cat# [TA50011-100]). Left: Cell lysates from un-transfected HEK293T cells; Right: Cell lysates from HEK293T cells transfected with RC214829 using transfection reagent MegaTran 2.0 (Cat# [TT210002]).