

Product datasheet for **RC214821**

CRMP3 (DPYSL4) (NM_006426) Human Tagged ORF Clone

Product data:

Product Type:	Expression Plasmids
Product Name:	CRMP3 (DPYSL4) (NM_006426) Human Tagged ORF Clone
Tag:	Myc-DDK
Symbol:	CRMP3
Synonyms:	CRMP3; DRP-4; ULIP4
Mammalian Cell Selection:	Neomycin
Vector:	pCMV6-Entry (PS100001)
E. coli Selection:	Kanamycin (25 ug/mL)



[View online »](#)

ORF Nucleotide Sequence:

>RC214821 representing NM_006426.
 Blue=ORF Red=Cloning site Green=Tag(s)

```
GCTCGTTTAGTGAACCGTCAGAATTTTGTAAACGACTCACTATAGGGCGGCCGGGAATTCGTGACTG
GATCCGGTACCGAGGAGATCTGCCGCCCGCATCGCC
ATGTCCTTCCAGGGCAAGAAAAGCATCCCCGGATCACGAGTGACCGCCTTCTGATCAGAGGTGGGAGG
ATCGTGAATGACGACCCAGTCCTTTTACGCTGATGTGCACGTGGAAGATGGCTTGATAAAACAAATCGGA
GAAAACCTCATCGTCCCTGGGGGCATCAAGACCATTGACGCCACGGCCTGATGGTCTTCTGTTGGC
GTTGACGTCCACACAAGGCTGCAGATGCCTGCTGCGGCATGACACCGGCTGACGACTTCTGTCAGGGC
ACCAAGGCAGCGCTAGCAGGAGGAACCACCATGATCTTGACCACGTCTTCCCGACACGGGTGTGAGC
CTGCTGGCGGCTACGAGCAGTGGCGGGAGCGGGCGGACAGCGCGCCTGCTGCGACTACTCCCTGCAC
GTGGACATCACCCGATGGCATGAGAGCATCAAGGAGGAGCTGGAGGCCCTGGTCAAGGAGAAGGGTGTG
AACTCCTTCTGGTCTTTCATGGCATAACAAGACCGGTGCCAGTGCAGCGACAGCCAGATGTACGAGATC
TTCAGCATCATCCGGGACCTGGGGCCTTGGCCAGGTGCACGCTGAGAACGGGGACATCGTGGAGGAG
GAGCAGAAGCGGTTGCTGGAGCTCGGCATCACTGGCCCCGAGGGCCAGTCTCAGCCACCCGAGGAG
GTGGAGGCTGAGGCGGTGTACCGAGCTGTACCATCGCCAAGCAGGCAAACCTGCCGCTGTACGTACC
AAGGTGATGAGCAAGGGGGCGGCCGACGCCATCGCTCAGGCCAAGCGCAGAGGGTGGTCTGTTGGG
GAGCCCATCACCGCCAGCCTGGGCACCGACGGTTCACACTACTGGAGCAAGAAGTGGGCCAAGGCCGCA
GCCTTCGTACATCACCCCTGTCAACCCAGACCCACACGGCAGACCCTCACCTGCTTGTGCTCC
AGCGGGGACCTCCAGGTGACAGGCAGCGCCACTGCACCTTACCAGTCCCAGAAAGGCTGTGGGCAAG
GACAACTTCGCGCTGATCCCCGAGGGCACCAACGGCATTGAGGAGCGCATGTCGATGGTCTGGGAGAAA
TGTGTGGCCTCTGGGAAGATGGACGAGAATGAGTTCGTGCGGTGACAGTACAAATGCTGCCAAATC
TTCAATTTTTACCAAGGAAGGGCGAGTGGCTGTGGGCTGACGCTGACCTGGTGCATAGGAACCC
AAGGCCACCAAGATCATCTCTGCCAAGACCCACAATCTGAACGTGGAGTACAACATCTTCGAGGGAGTG
GAGTGCCGGGAGCGCCTGCCGTGGTATAAGTACGGCCGAGTGGCGCTGGAGGACGGGAAGATGTTT
GTCACCCCGGGGGCGGGCCGCTTCTGTCCTCGAAAACATTCCCGGACTTGTCTACAAGAGGATCAAA
GCTCGAACAGGCTGGCGGAGATCCACGGTGTGCCCGTGGGCTGTATGACGGGCCCGTCCACGAGGTG
ATGGTGCCTGCCAAGCCAGGAGTGGCGCTCCGGCCCGCGCTCTGCCAGGCAAGATCTCCGTCCT
CCTGTGCGCAACCTACATCAGTCGGGGTTCAGCCTATCTGGGTCTCAGGCTGATGACCACATCGCCCA
CGCACAGCACAGAAGATCATGGCACCACTGGCGGCCGCTCCAACATCACCTCTCTCTCC
AGCGGACCGACGCGTACGCGGCCGCTCGAGCAGAACTCATCTCAGAAGAGGATCTGGCAGCAAATGAT
ATCCTGGATTACAAGGATGACGACGATAAGGTTTAA
```

Protein Sequence:

>Peptide sequence encoded by RC214821
 Blue=ORF Red=Cloning site Green=Tag(s)

```
MSFQKKSIPIRITSDRLLIRGGRIVNDQSFYADVHVEDGLIKQIGENLIVPGGIKTIDAHLMLVLPGG
VDVHTRLQMPVLGMTADDPCQGTKAALAGGTTMILDHVPDGTGVSLLAAEQWRERADSAACDDYSLH
VDITRWHEISKEELEALVKEKGVNSFLVFMAYKDRQCSDSQMYEIFSIIRDLGALAQVHAENGDI VEE
EQKRLLELGITGPEGHVLSHPPEVEAEAVYRAVTIAKQANCLYVTKVMSKGAADAIAQAKRRGVVVF
EPITASLGTGSHYWSKNWAKAAAFVTSPPVNPDPPTADHLTCLLSSGDLQVTGSAHCTFTTAQKAVGK
DNFALIPEGTNGIEERMSMVWEKCVASGKMDENEFVAVTSTNAKIFNFYPRKGRVAVGSDADLVIWNP
KATKIIISAKTHNLNVEYNI FEGVECRGAPAVVISQGRVALEDGKMFVTPGAGRFVPRKTFPDFVYKRIK
ARNRLAEIHGVPRLGYDGPVHEVMVPAKPGSGAPARASCPGKISVPPVRNLHQSGFSLSGSQADDHIAR
RTAQKIMAPPGRSNITSLS
SGPTRTRPLEQKLISEEDLAANDILDYKDDDDKV
```

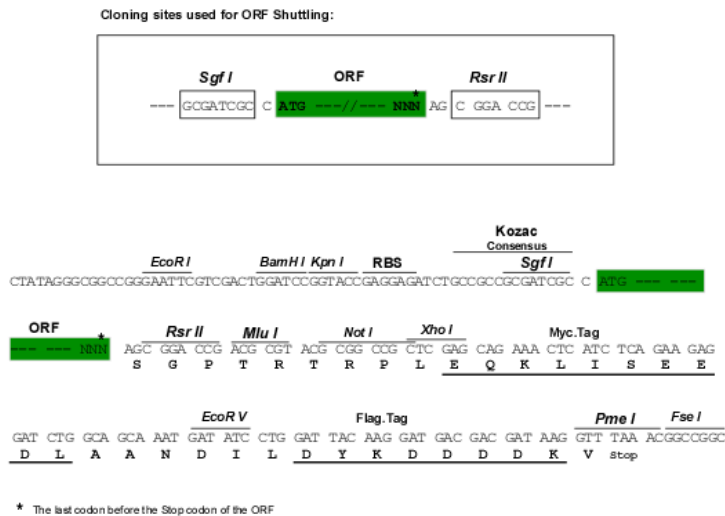
Recombinant protein using RC214821 also available, [TP314821](#)

Chromatograms:

https://cdn.origene.com/chromatograms/mk6622_d04.zip

Restriction Sites:

SgfI-RsrII

Cloning Scheme:


ACCN: NM_006426

ORF Size: 1716 bp

OTI Disclaimer: The molecular sequence of this clone aligns with the gene accession number as a point of reference only. However, individual transcript sequences of the same gene can differ through naturally occurring variations (e.g. polymorphisms), each with its own valid existence. This clone is substantially in agreement with the reference, but a complete review of all prevailing variants is recommended prior to use. [More info](#)

OTI Annotation: This clone was engineered to express the complete ORF with an expression tag. Expression varies depending on the nature of the gene.

Components: The ORF clone is ion-exchange column purified and shipped in a 2D barcoded Matrix tube containing 10ug of transfection-ready, dried plasmid DNA (reconstitute with 100 ul of water).

Reconstitution Method:

1. Centrifuge at 5,000xg for 5min.
2. Carefully open the tube and add 100ul of sterile water to dissolve the DNA.
3. Close the tube and incubate for 10 minutes at room temperature.
4. Briefly vortex the tube and then do a quick spin (less than 5000xg) to concentrate the liquid at the bottom.
5. Store the suspended plasmid at -20°C. The DNA is stable for at least one year from date of shipping when stored at -20°C.

Note: Plasmids are not sterile. For experiments where strict sterility is required, filtration with 0.22um filter is required.

RefSeq: [NM_006426.3](#)

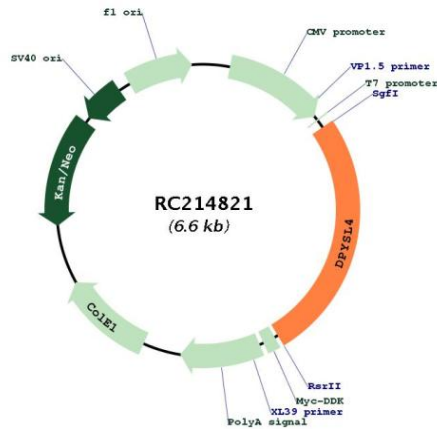
RefSeq Size: 2699 bp

RefSeq ORF: 1719 bp

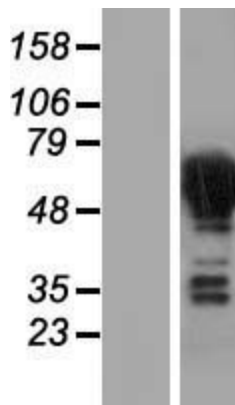
Locus ID: 10570

UniProt ID: [O14531](#)
Cytogenetics: 10q26.3
Domains: Amidohydro_1
MW: 61.9 kDa
Gene Summary: Necessary for signaling by class 3 semaphorins and subsequent remodeling of the cytoskeleton. Plays a role in axon guidance, neuronal growth cone collapse and cell migration (By similarity).[UniProtKB/Swiss-Prot Function]

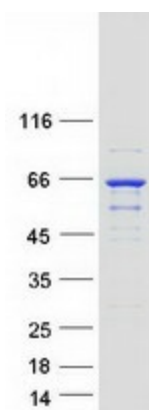
Product images:



Circular map for RC214821



Western blot validation of overexpression lysate (Cat# [LY416651]) using anti-DDK antibody (Cat# [TA50011-100]). Left: Cell lysates from untransfected HEK293T cells; Right: Cell lysates from HEK293T cells transfected with RC214821 using transfection reagent MegaTran 2.0 (Cat# [TT210002]).



Coomassie blue staining of purified DPYSL4 protein (Cat# [TP314821]). The protein was produced from HEK293T cells transfected with DPYSL4 cDNA clone (Cat# RC214821) using MegaTran 2.0 (Cat# [TT210002]).