

Product datasheet for **RC214817**

DTX2 (NM_001102596) Human Tagged ORF Clone

Product data:

Product Type:	Expression Plasmids
Product Name:	DTX2 (NM_001102596) Human Tagged ORF Clone
Tag:	Myc-DDK
Symbol:	DTX2
Synonyms:	RNF58
Mammalian Cell Selection:	Neomycin
Vector:	pCMV6-Entry (PS100001)
E. coli Selection:	Kanamycin (25 ug/mL)



[View online »](#)

ORF Nucleotide Sequence:

>RC214817 representing NM_001102596
 Red=Cloning site Blue=ORF Green=Tags(s)

TTTTGTAATACGACTCACTATAGGGCGGCCGGAATTCGTCGACTGGATCCGGTACCGAGGAGATCTGCC
 GCC**GCGATCGCC**

ATGGCCATGGCCCAAGCCCTTCCTGGTGCAGGTGTACACCAGCCCGGGCTGTGGCCGTGTGGGAAT
 GGCAGGACGGGCTGGGCACCTGGCACCCCTACAGTGCCACCGTCTGCAGCTTCATCGAGCAGCAGTTGT
 CCAGCAGAAGGGCCAACGTTTTGGGCTTGGGAGCCTGGCCACAGCATCCCTTGGGCCAGGCAGACCCC
 TCGCTGGCCCTTACATTATTGACCTCCCCAGCTGGACCCAGTTCGCCAGGACACCGGCACCATGCGGG
 CTGTGCGGAGACCTGTTCCCCAGCACTCAGCCCTGGCCGAGGTGTCGTCTGGGAGTGGCTGAGCGA
 CGATGGCTCCTGGACTGCCTATGAAGCCAGCGTCTGTGACTATCTGGAGCAGCAGGTGGCCAGGGGCAAC
 CAGCTCGTGGACTTGGCCCCCTGGGGTACAACACTACTGTCAACTACACCACCCACACGCAGACCAACA
 AGACTTCCAGCTTCTGCCGACGCTGCGCGCCAAGCAGGGCCGCTTACCCGGTACCACCATCATCGC
 TCCGCCGGGCCACACAGGCGTGCCTGCTTTGCCACCAGTGCCTCAGTGGCAGCAGAATGGCCCCGTG
 TCAGGCCGCTACCGCCACTCCATGACCAACCTCCCTGCATACCCCGTCCCCAGCACCCCCACACAGGA
 CCGCTTCTGTGTTTGGGACCCACAGGCCCTTGCACCGTACAACAACCCCTCACTCTCCGGGGCCCGGTC
 TGCGCCAGGCTGAACACCACCAACGCCTGGGGCGCAGCTCCTCCTTCCCTGGGGAGCCAGCCCTCTAC
 CGCTCCAGCCTCTCCACCTGGGACCGCAGCACCTGCCCCAGGATCCTCCACCTCCGGTGCAGTCAGTG
 CCTCCCTCCCCAGCGGTCCCTCAAGCAGCCAGGGAGCGTCCCTGCCACTGTGCCATGCAGATGCCAAA
 GCCCAGCAGAGTCCAGCAGGCGCTCGCAGGAGCAGCCCGAAGCCAGAGCCAGAGCCAGAGCAGGTCCATA
 AAAAATACACGGAAGAGCTGAAAGTGCCCCAGATGAGGACTGCATCATCTGCATGGAGAAGCTGTCCA
 CAGCGTCTGGATACAGCGATGTGACTGACAGCAAGGCAATCGGGTCCCTAGCTGTGGCCACCTACCAA
 GTGCAGCCATGCCTTCCACCTGCTGTGCCTCCTGGCCATGTAAGCAACGCAATAAGGATGGAAGTCTG
 CAGTGTCCCTCCTGCAAAACCATCTATGGAGAGAAGACGGGGACCCAGCCCAAGGAAAGATGGAGGTAT
 TACGGTCCAGATGTCGCTCCCCGGCCACGAGGACTGCGGGACCATCCTCATAGTTTACAGCATTCCCCA
 TGGTATCCAGGGCCCTGAGCACCCCAATCCCGAAAGCCGTTCACTGCCAGAGGGTTTCCCCGCCAGTGC
 TACCTTCCAGACAACGCCAGGGCCGCAAGGTCTAGAGCTCCTGAAGTGGCTGGAAGAGGGCGTCA
 TCTTACAGTGGGCACGTCCAGCACCGGTGAGACGGACCCGTGGTATGGAACGAGATCCACCACAA
 GACAGAGATGGACCGCAACATTACGGGCCACGGCTATCCCGACCCCAACTACCTGCAGAAGCTGCTGGCT
 GAGCTGGTGTCCAGGGGTGACCGAGGACTGCCTGGAGCAGCAG

ACGCGTACGCGGGCCGCTCGAGCAGAAACTCATCTCAGAAGAGGATCTGGCAGCAAATGATATCCTGGATT
 ACAAGGATGACGACGATAAGGTTTAA

Protein Sequence:

>RC214817 representing NM_001102596
 Red=Cloning site Green=Tags(s)

MAMAPSPSLVQVYTPAAVAVWEWQDGLGTHWPHYSATVCSFIEQQFVQKQGRFGLGSLAHSIPLGQADP
 SLAPYIIDLPSWTQFRQDTGTMRAVRRHLFPQHSAPGRGVVWEWLSDDGSWTAYEASVCDYLEQQVARGN
 QLVDLAPLGYNYTVNYTHTQTNKTSFCSVRRQAGPPYPVTTIIAPPGHTGVACSCHQCLSGSRTGPV
 SGRYRHSMTNLPAYPVPQHPPHRTASVFGTHQAFAPYNKPSLSGARSAPRLNTTNAWGAAPPSLGSQPLY
 RSSLSHLGPQHLPPGSSTSGAVSASLPSGSSSPGVPATVPMQMPKPSRVQQALAGATPKPEPEPEQVI
 KNYTEELKVPPDEDICIICMEKLSTASGYSVTDSDKAIGSLAVGHLLTKCSHAFHLLCLLAMCNGNKDGL
 QCPSCKTIYGEKGTQPQGMVLRVQMSLPGHEDCGTILIVYSIPHGIQGEHPNPNGKPFRTARGFPRQC
 YLPDQAQRKVLLELLKVAWRRLIFTVGTSSTTGETDVTVVWNEIHHKTEMDRNTGHGYPDPNYLQNVLA
 ELAAQGVTEDCLEQQ

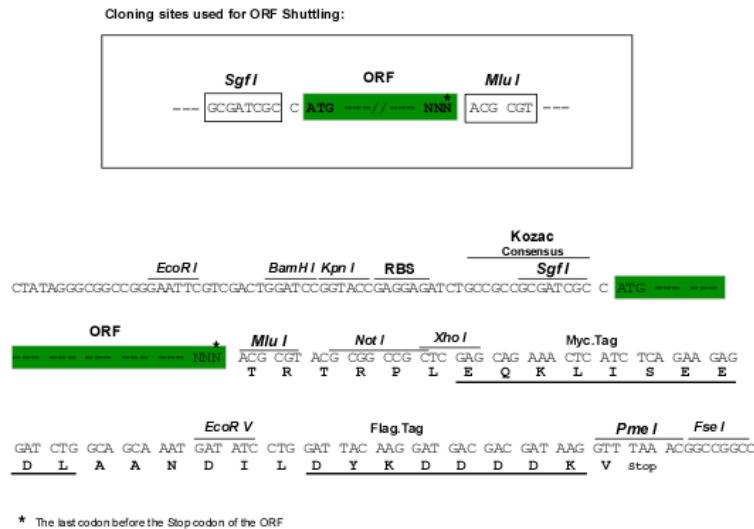
TRTRPLEQKLISEEDLAANDILDYKDDDDKV

Chromatograms:

https://cdn.origene.com/chromatograms/mk8068_a09.zip

Restriction Sites:

Sgfl-Mlul

Cloning Scheme:


ACCN: NM_001102596

ORF Size: 1725 bp

OTI Disclaimer: The molecular sequence of this clone aligns with the gene accession number as a point of reference only. However, individual transcript sequences of the same gene can differ through naturally occurring variations (e.g. polymorphisms), each with its own valid existence. This clone is substantially in agreement with the reference, but a complete review of all prevailing variants is recommended prior to use. [More info](#)

OTI Annotation: This clone was engineered to express the complete ORF with an expression tag. Expression varies depending on the nature of the gene.

Components: The ORF clone is ion-exchange column purified and shipped in a 2D barcoded Matrix tube containing 10ug of transfection-ready, dried plasmid DNA (reconstitute with 100 ul of water).

- Reconstitution Method:**
1. Centrifuge at 5,000xg for 5min.
 2. Carefully open the tube and add 100ul of sterile water to dissolve the DNA.
 3. Close the tube and incubate for 10 minutes at room temperature.
 4. Briefly vortex the tube and then do a quick spin (less than 5000xg) to concentrate the liquid at the bottom.
 5. Store the suspended plasmid at -20°C. The DNA is stable for at least one year from date of shipping when stored at -20°C.

RefSeq: [NM_001102596.2](#)

RefSeq Size: 2138 bp

RefSeq ORF: 1728 bp

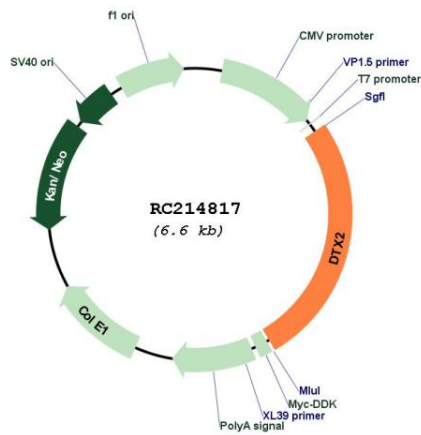
Locus ID: 113878

UniProt ID: [Q86UW9](#)

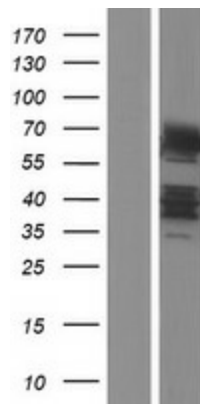
Cytogenetics: 7q11.23

Protein Families: Druggable Genome
Protein Pathways: Notch signaling pathway
MW: 62.2 kDa
Gene Summary: DTX2 functions as an E3 ubiquitin ligase (Takeyama et al., 2003 [PubMed 12670957]). [supplied by OMIM, Nov 2009]

Product images:



Circular map for RC214817



Western blot validation of overexpression lysate (Cat# [LY420165]) using anti-DDK antibody (Cat# [TA50011-100]). Left: Cell lysates from untransfected HEK293T cells; Right: Cell lysates from HEK293T cells transfected with RC214817 using transfection reagent MegaTran 2.0 (Cat# [TT210002]).