

Product datasheet for RC214806

FHDC1 (NM_033393) Human Tagged ORF Clone

Product data:

Product Type:	Expression Plasmids
Product Name:	FHDC1 (NM_033393) Human Tagged ORF Clone
Tag:	Myc-DDK
Symbol:	FHDC1
Synonyms:	INF1
Mammalian Cell Selection:	Neomycin
Vector:	pCMV6-Entry (PS100001)
E. coli Selection:	Kanamycin (25 ug/mL)
ORF Nucleotide Sequence:	>RC214806 representing NM_033393 Red=Cloning site Blue=ORF Green=Tags(s)

TTTTGTAATACGACTCACTATAGGGCGGCCGGAATTCGTCGACTGGATCCGGTACCGAGGAGATCTGCC
GCC**CGATCGCC**

ATGCATGTTATGAATTGTGTCCTTGGTCAGTGATAAAGAAAATGGGAATATTGCCACAGCACCTGGAT
TCATGATTGGGCAGACACCTCCTCCAGCACCTCCTCCACCTCCTCCTCCACCCCTCCATCTCCACCATG
TTCATGTTCAAGGAAGAGTGTCTTCTCCCTCCTCCACCCACCACCTCCACTTCTGGGGAGCCT
CCCATCCCACCTCCCCACCAGGCTACCCCACTACTCACATGAACGGCTACAGCCACCTTGGTAAGA
AAAAGCGGATGAGAAGCTTTTTTGGAAAATATTCCGGAGGAGCAAGTTCGAGGCAAACCAACATCTG
GACCTTGGCAGCCAGGCAGGAACATCACTACCAAATTGATACAAAGACCATTGAGGAGCTTTTGGGCG
CAGGAAGACACCACCAAGTCTTCCCTTCTAGGAGAGGAAGAAGTAAATTCATCCTTCAGAGAAGCTC
GAGAAGAGATTACTATTTTGGATGCAAAACGGAGCATGAACATTGGGATATTTCTTAAGCAATTTAAGAA
GTCTCCTCGGTCCATTGTAGAAGATTTTCAAGGAAAAAGTGAGCATTATGGATCAGAGACCTTGGCA
GAATTTCTTAAGTTTTTGGCAGAGTCAGAAGAGGTAAGAAGTAAAAGCGTTTAGTGGCGACGTGTCGA
AGCTGTCTCTGGCAGATTCTTTCTGTATGGCTAATTCAGGTGCCAACTATTCCTTCCGATTGAAGC
CATGGTGCTAAAAGAAGGAATTTCTACCTTCTTGTCTTCTCTATATACAGATATAACAGTTTTAAGAAT
GCTATAAAGAAGTATGATCATGTGAAGAGCTACATTCAATATTACACTTGGTGCTCCAGGCTGGGAATA
TCATGAATGCAGGAGGTATGCCGCAATGCAGTAGGATTTAAACTGTCTTCTTTGCTCAAATGGCAGA
CACAAAAGCAAACAACTGGGATGAATCTCCTGCACTTTGTTGCACAGGAAGCCAAAAGAAAGATACC
ATCTTCTAACTTTTTCAGAAAAATGTCATCATGTTTCAGAAGACTGCTAGATTATCTCTGGAGAACCGG
AGGCAGAACTGCACTTGTGTTTGTGAGGACAAAATCACTAAAAGAAAACATCCAGCGGGATGGTGAAT
TTGTCAGCAGATGGAAGATTTTCTCAGTTTGGCATAGAAAAGCTGAGGGAACTGGAATGCTGGAAACAA
GAGCTCCAGGATGAGGCCTACACCCTTATAGATTTTTTCTGTGAAGACAAAAAACCATGAACTGGATG
AATGCTTTCAGATATTTAGAGATTTCTGTACCAAATCAACAAAGCAGTTAAGGACAACCCAGCCGGGA
GGCGCAGGAGCTGAGGCAGCTGCAGAGGCTGAAGGAGCAGGAGCAGAAGCAGCGCTCCTGGCAACTGGG



[View online »](#)

GAGCTGGGGCATTGGCCGGAGCAGCAGTGAGAATGATGTGGAGCTGCTGACCAAGAAGGGTGCAGAGG
GCCTGCTCCCTTTCTGCACCCAGGCCATCAGCCCCTCCAGCCCCTCTACCGGCCCCGAACACCCG
CCGCTCCCGCCTCTCCCTGGGTCCCTCTGCTGACCGGGAGCTGCTGACCTTCTGGAGAGCTCCACCGGC
AGCCCTGAGGAGCCAAATAAGTTCCACAGCCTGCCCGGAGCAGCCCCGGCAGGCCCGGCCACGATAG
CCTGCCTGGAGCCTGCAGAAAGTGGGCACCAGGACTCCAGCTTTGCACACAAACCTCAGGCCTCGGGGG
CCAGGAGGAGGCCCAACCCACCCTCAGCACAGGCGCACCAGCTTGACGCCGCCAGCCTGAGAACCAT
GCCTCTGCCTTCCCAGAGCTCGGTGCCAGGGCGTCAGTGTCTCCGAAAGAGGTACAGTGAGCCGGTGA
GCCTGGGCTCAGCACAGTCCCCTCTCTCGCCATTGGCTCTGGGAATTAAGGAGCATGAGCTGGTGAC
AGGGCTGGCCAGTTCAACCTCCAGGGTCCCAGGGCATGGAGGAGACCTCCCAGCTGACTCTGAGTGAC
TTCAGCCCGATGGAGCTAGAGTCTGTGGGGCATAGGGGCCCGCAGTCCCTCAGTGCCAGCAGCAGAGCC
TGACACCCATGGGAGAGATGCCCTGGGGAGTCTCAGCCAGCGCTGGAGGATGGCAAGGCTGCCCCGA
TGAGCCTGGAAGTGCAGCTTTGGGATCTGTGGGTAGCAGCAGCCCTGAGAAACAAAGATCTAGACCTCTG
TTCTGCATCTCGACACCACCGACTGCTACTGACCCTGGACTGCTCAGAGGGAACCGACTCCAGACCCA
GAGGCGGGGACCCGGAGGAAGCGGGGAAGGGGATGGCTCCATGTCTCTGGGGTTGGAGAAATGGGGGA
CAGCCAAGTCTCCTCAACCTACATCCAGCCCCCTGGGGAGGCTCCTGCCCCGTCTCTGTGGATAGT
GAGCCCAGCTGCAAGGGCGGCCTGCCAGGGACAACCCACCAAAAGGAAAGATGTTGTAGCACCAAGA
GAGGCTCCCTGAAAGAGGCGTCTCCCGGGCCTCCAAGCCGGGAGCGCCCGGGCAGCCAGGGGGCAGT
GGCCAAGTCTGTGCGGACCCTGACCGCCTCAGAGAACGAGAGCATGCGCAAGGTGATGCCATCACCAAG
TCCAGCAGAGGCGCCGGCTGGAGGCGACCAGAGCTGTCATCCCGGGGGCCCTCCCAGAATCCCCCAGCA
GCACAGATACTGTGTGGTACGCCAGAACTCCGTGCGGAGGGCCTCCACAGGCGCCGAAGAGCAGAGGCT
GCCGCGGGGAGCAGCGGCTCCAGCAGCACCCGTCCGGGGAGGGACGTTCCCTGCAGCCCAGGGTTCT
TTCAAGAAGCCCAGTGCCAAACCACTCAGGAACCTCCCAGACAGAAGCCTGAGGAAAATAAGACCTGCC
GCGCCCACTCGAGGGCCCTGAGAGTCCCAAGAAGAGCCCAAGACCCCGTCAGTGCCAGCGTCCCCCA
CGAACTACCCCGTGTCCCGAGCTTTGCCCGGAACACAGTGGCCTCCTCCTCTCGAAGCATGAGAACAGAT
CTTCTCCCGTGGCCAAAGCCCCCGCATCACTCGGACAGTGTGCGAGCGGCAGCTGAGGGTGAAAGGGG
ACCCCAGGATGCCGCTCCCAAGGACAGCAGCACTTTGAGGCGAGCCAGCAGTGCCCGGGCCCCCAAGAA
GCGCCCAGAGTCTGCGGAGGGTCCAGTGCCAACACGGAGGCCCTCTGAAGGCCAGAGGGGCTGGGGAA
AGGGCCTCCCTCCGTCCGAAGGACTCCAGTCGGACCACGCTGGGGAGAATCCTCAATCCCTTACGGAAAG

ACGGTACGCGGGCCGCTCGAGCAGAACTCATCTCAGAAGAGGATCTGGCAGCAATGATATCCTGGATT
ACAAGGATGACGACGATAAGGTTTAA

Protein Sequence: >RC214806 representing NM_033393
Red=Cloning site Green=Tags(s)

MHVMNCVSLVSDKENGIATAPGFMIQTPPPAPPPPPPPPPSPPCSCSREECPSPPPPPPPPPLPGEPI
 PIPPPPPGLPPTTHMNGYSHLGKKRMRSFFWKTIPEEQVRGKTNIWTLAARQEHHYQIDTKTIEELFGQ
 QEDTTKSSLPRRGRTLNSSFREAREEITILDAKRSMNIGIFLKQFKKSPRSIVEDIHQGKSEHYGSETLR
 EFLKFLPESEEVKLLKAFSGDVSLSLADSFYGLIQVFNYSRLIEAMVLKKEFLPSCSSLYTDITVLR
 AIKELMSCEELHSILHLVLQAGNIMNAGGYAGNAVGFKLSLLKLADTKANKPGMNLHFVAQEAQKDDT
 ILLNFSEKLHHVQKTARLSLENTEAELHLLFVRTKSLKENIQRDGELCQQMEDFLQFAIEKLRELECWKQ
 ELQDEAYTLIDFFCEDKKTMLDECFQIFRDFCTKFNKAVKDNHDREAQELRQLRQLKEQEQQRSWATG
 ELGAFGRSSSENDVELLTKKGAEGLLPFLHPRPISPPSPSYRPPNTRRSRLSLGPSADRELLTFLESSTG
 SPEEPNKFHSLPRSSPRQARPTIACLEPAEVRHQDSSFAHKPQASGGQEEAPNPPSAQAHQLAAAQPENH
 ASAFPRRACQGVSVLRKRYSEPVSLGSAQSPPLSPLALGIKEHELVTGLAQFNLQGSQGMEEETSQLTLSD
 FSPMELESVGHGQPQLSASSSSLTPMGRDALGSLSPALEDGKAAPDEPGSAALGSGSSDPENKDRPRL
 FCI S D T T D C S L T L D C S E G T D S R P R G G D P E E G G E D G S M S S G V G E M G D S Q V S S N P T S P P G E A P A P V S V D S
 E P S C K G G L P R D K P T K R K D V V A P K R G S L K E A S P G A S K P G S A R R S Q G A V A K S V R T L T A S E N E S M R K V M P I T K
 S S R G A G W R R P E L S S R G P S Q N P P S S T D T V W S R Q N S V R R A S T G A E E Q R L P R G S S G S S T R P G R D V P L Q P R G S
 F K K P S A K P L R N L P R Q K P E E N K T C R A H S E G P E S P K E E P K T P S V P S V P H E L P R V P S F A R N T V A S S R S M R T D
 L P P V A K A P G I T R T V S Q R Q L R V K G D P E D A A P K D S S T L R R A S S A R A P K K R P E S A E G P S A N T E A P L K A R G A G E
 R A S L R R K D S S R T T L G R I L N P L R K

TRTRPLEQKLISEEDLAANDILDYKDDDDKV

Chromatograms: https://cdn.origene.com/chromatograms/mk8030_c10.zip

Restriction Sites: SgfI-MluI

Cloning Scheme:

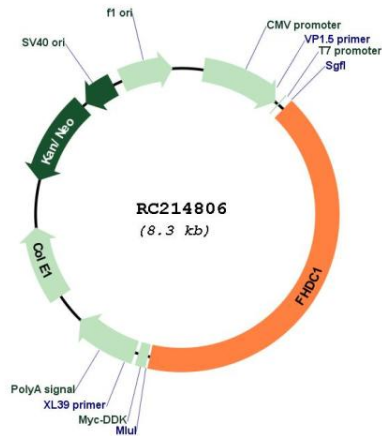


ACCN: NM_033393

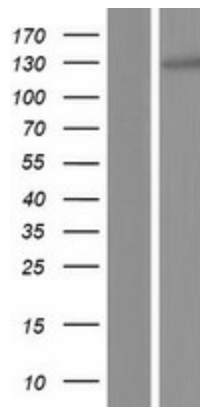
ORF Size: 3429 bp

OTI Disclaimer:	The molecular sequence of this clone aligns with the gene accession number as a point of reference only. However, individual transcript sequences of the same gene can differ through naturally occurring variations (e.g. polymorphisms), each with its own valid existence. This clone is substantially in agreement with the reference, but a complete review of all prevailing variants is recommended prior to use. More info
OTI Annotation:	This clone was engineered to express the complete ORF with an expression tag. Expression varies depending on the nature of the gene.
Components:	The ORF clone is ion-exchange column purified and shipped in a 2D barcoded Matrix tube containing 10ug of transfection-ready, dried plasmid DNA (reconstitute with 100 ul of water).
Reconstitution Method:	<ol style="list-style-type: none">1. Centrifuge at 5,000xg for 5min.2. Carefully open the tube and add 100ul of sterile water to dissolve the DNA.3. Close the tube and incubate for 10 minutes at room temperature.4. Briefly vortex the tube and then do a quick spin (less than 5000xg) to concentrate the liquid at the bottom.5. Store the suspended plasmid at -20°C. The DNA is stable for at least one year from date of shipping when stored at -20°C.
RefSeq:	NM_033393.1 , NP_203751.1
RefSeq Size:	6470 bp
RefSeq ORF:	3432 bp
Locus ID:	85462
UniProt ID:	Q9C0D6
Cytogenetics:	4q31.3
MW:	124.6 kDa
Gene Summary:	Microtubule-associated formin which regulates both actin and microtubule dynamics. Induces microtubule acetylation and stabilization and actin stress fiber formation (PubMed:18815276). Regulates Golgi ribbon formation (PubMed:26564798). Required for normal cilia assembly. Early in cilia assembly, may assist in the maturation and positioning of the centrosome/basal body, and once cilia assembly has initiated, may also promote cilia elongation by inhibiting disassembly (PubMed:29742020).[UniProtKB/Swiss-Prot Function]

Product images:



Circular map for RC214806



Western blot validation of overexpression lysate (Cat# [LY409574]) using anti-DDK antibody (Cat# [TA50011-100]). Left: Cell lysates from untransfected HEK293T cells; Right: Cell lysates from HEK293T cells transfected with RC214806 using transfection reagent MegaTran 2.0 (Cat# [TT210002]).