

Product datasheet for RC214802

Thrombospondin 1 (THBS1) (NM_003246) Human Tagged ORF Clone

Product data:

Product Type:	Expression Plasmids
Product Name:	Thrombospondin 1 (THBS1) (NM_003246) Human Tagged ORF Clone
Tag:	Myc-DDK
Symbol:	Thrombospondin 1
Synonyms:	THBS; THBS-1; TSP; TSP-1; TSP1
Mammalian Cell Selection:	Neomycin
Vector:	pCMV6-Entry (PS100001)
E. coli Selection:	Kanamycin (25 ug/mL)
ORF Nucleotide Sequence:	>RC214802 representing NM_003246 Red=Cloning site Blue=ORF Green=Tags(s)

TTTTGTAATACGACTCACTATAGGGCGGCCGGAATTCGTCGACTGGATCCGGTACCGAGGAGATCTGCC
GCC**CGATCGCC**

ATGGGGCTGGCCTGGGGACTAGGCGTCCTGTTCTGATGCATGTGTGGCACCACCGCATTCCAGAGT
CTGGCGGAGACAACAGCGTGTGGACATCTTTGAACTCACCGGGCCGCCGCAAGGGGTCTGGGCGCCG
ACTGGTGAAGGGCCCGACCCCTCCAGCCAGCTTTCCGCATCGAGGATGCCAACCTGATCCCCCTGTG
CCTGATGACAAGTTCCAAGACCTGGTGGATGCTGTGCGGGCAGAAAAGGGTTTCTCTTCTGGCATCCC
TGAGGCAGATGAAGAAGACCCGGGGCACGCTGCTGGCCCTGGAGCGGAAAGACCCTCTGGCCAGGTCTT
CAGCGTGGTGTCCAATGGCAAGGCGGGCACCCCTGGACCTCAGCCTGACCGTCCAAGGAAAGCAGCACGTG
GTGCTGTGGAAGAAGCTCTCCTGGCAACCGGCCAGTGAAGAGCATCACCTGTTTGTGCAAGGAAGACA
GGGCCCAGCTGTACATCGACTGTGAAAAGATGGAGAATGCTGAGTTGGACGTCCCATCCAAGCGTCTT
CACCAGAGACCTGGCCAGCATCGCCAGACTCCGCATCGCAAAGGGGGCGTCAATGACAATTTCCAGGGG
GTGCTGCAGAATGTGAGGTTTGTCTTTGGAACACACCAGAAGACATCCTCAGGAACAAAGGCTGTCCA
GCTCTACCAGTGTCTCCTCACCTTGACAACAACGTGGTGAATGGTCCAGCCCTGCCATCCGCACTAA
CTACATTGGCCACAAGACAAGGACTTGCAAGCCATCTGCGGCATCTCCTGTGATGAGCTGTCCAGCATG
GTCCTGGAACCTCAGGGGCTGCGCACCATTGTGACCAGCTGCAGGACAGCATCCGCAAAGTGACTGAAG
AGAACAAGAGTTGGCCAATGAGCTGAGGCGGCTCCCTATGCTATCACAACGGAGTTCAGTACAGAAA
TAACGAGGAATGGACTGTTGATAGCTGCACTGAGTGTCACTGTCAGAACTCAGTTACCATCTGCAAAAAG
GTGTCCTGCCCATCATGCCCTGCTCCAATGCCACAGTTCCTGATGGAGAATGCTGTCCTCGCTGTTGGC
CCAGCGACTCTGCGGACGATGGCTGGTCTCCATGGTCCGAGTGGACCTCCTGTTCTACGAGCTGTGGCAA
TGGAAATTCAGCAGCGCGGCGCTCCTGCGATAGCCTCAACAACCGATGTGAGGGCTCCTCGTCCAGACA
CGGACCTGCCACATTGAGGAGTGTGACAAGAGATTTAAACAGGATGGTGGCTGGAGCCACTGGTCCCCGT
GGTCATCTTGTCTGTGACATGTGGTGTGGTGTGATCACAAGGATCCGGCTCTGCAACTCTCCAGCCC
CCAGATGAACGGAAACCCTGTGAAGGCGAAGCGGGAGACCAAGCCTGCAAGAAAGACGCTGCC



[View online »](#)

ATCAATGGAGGCTGGGGTCTTGGTCACCATGGGACATCTGTTCTGTCACCTGTGGAGGAGGGGTACAGA
AACGTAGTCGTCTCTGCAACAACCCACACCCAGTTTGGAGGCAAGGACTGCGTTGGTATGTAACAGA
AAACCAGATCTGCAACAAGCAGGACTGTCCAATTGATGGATGCCTGTCCAATCCCTGCTTTGCCGGCGTG
AAGTGTACTAGCTACCCTGATGGCAGCTGGAAATGTGGTGCTTGTCCCCCTGGTTACAGTGGAAATGGCA
TCCAGTGACAGATGTTGATGAGTGCAAAGAAGTGCCTGATGCCTGTCAACCACAATGGAGAGCACCG
GTGTGAGAACACGGACCCCGCTACAACCTGCCTGCCCTGCCCCACGCTTCACCGGCTCACAGCCCTTC
GGCCAGGGTGTGGAACATGCCACGGCCAACAAACAGGTGTGCAAGCCCGTAACCCCTGCACGGATGGGA
CCCACGACTGCAACAAGAACGCCAAGTGAACCTACCTGGGCCACTATAGCGACCCCATGTACCGCTGCGA
GTGCAAGCCTGGCTACGCTGGCAATGGCATCATCTGCGGGGAGGACACAGACCTGGATGGCTGGCCCAAT
GAGAACCTGGTGTGCGTGGCCAATGCGACTTACCCTGCAAAAAGGATAATTGCCCAACCTTCCCAACT
CAGGGCAGGAAGACTATGACAAGGATGGAATTGGTATGCCTGTGATGATGACGATGACAATGATAAAAT
TCCAGATGACAGGGACAACCTGTCCATTCCATTACAACCCAGCTCAGTATGACTATGACAGAGATGATGTG
GGAGACCGCTGTGACAACTGTCCCTACAACCACAACCCAGATCAGGCAGACACAGACAACATGGGGAAG
GAGACGCCTGTGCTGCAGACATTGATGGAGACGGTATCCTCAATGAACGGGACAACCTGCCAGTACGTCTA
CAATGTGGACCAGAGAGACTGATATGGATGGGGTTGGAGATCAGTGTGACAATTGCCCTTGGAAAC
AATCCGGATCAGCTGGACTCTGACTCAGACCGCATTGGAGATACCTGTGCAACAATCAGGATATTGATG
AAGATGGCCACCAGAACAATCTGGACAACCTGTCCCTATGTGCCCAATGCCAACAGGCTGACCATGACAA
AGATGGCAAGGGAGATGCCTGTGACCACGATGATGACAACGATGGCATTCTGATGACAAGGACAACCTGC
AGACTCGTGCCCAATCCCGACCAGAAGGACTCTGACGGCGATGGTCGAGGTGATGCCTGCAAAGATGATT
TTGACCATGACAGTGTGCCAGACATCGATGACATCTGTCTGAGAATGTTGACATCAGTGAGACCGATTT
CCGCCGATTCCAGATGATTCTCTGGACCCAAAGGGACATCCCAAAATGACCCTAACTGGGTTGTACGC
CATCAGGGTAAAGAACTCGTCCAGACTGTCAACTGTGATCCTGGACTCGCTGTAGGTTATGATGAGTTTA
ATGCTGTGGACTTCAGTGGCACCTTCTTCATCAACACCCGAAAGGGACGATGACTATGCTGGATTTGTCTT
TGGCTACCAGTCCAGCAGCCGCTTTTATGTTGTGATGTGGAAGCAAGTCACCCAGTCTACTGGGACACC
AACCCACGAGGGCTCAGGGATACTCGGGCCTTTCTGTGAAAGTTGTAACCTCCACCACAGGGCCTGGCG
AGCACCTGCGGAACGCCCTGTGGCACACAGGAAACACCCCTGGCCAGGTGCGCACCCCTGTGGCATGACCC
TCGTCACATAGGCTGAAAGATTTACCGCCTACAGATGGCGTCTCAGCCACAGGCCAAAGACGGGTTTC
ATTAGAGTGGTATGATGAAGGAAGAAAATCATGGCTGACTCAGGACCCATCTATGATAAAACCTATG
CTGGTGGTAGACTAGGGTTGTTGTCTTCTCTCAAGAAATGGTGTCTTCTCTGACCTGAAATACGAATG
TAGAGATCCC

ACGCGTACGCGGCCGCTCGAGCAGAACTCATCTCAGAAGAGGATCTGGCAGCAAATGATATCCTGGATT
ACAAGGATGACGACGATAAGGTTTAA

Protein Sequence: >RC214802 representing NM_003246
 Red=Cloning site Green=Tags(s)

MGLAWGLGVLFLMHVCGTNRIPESGGDNSVFDIFELTGAARKGSGRRLVKGPDSPSPAFRIEDANLIPPV
 PDDKFQDLVDAVRAEKGFLLLASLRQMKTTRGTLALERKDHSGQVFSVVSNGKAGTLDLTLTVQKGQHV
 VSVEEALLATGQWKSITLQVQEDRAQLYIDCEKMENAELDVPIQSVFTRDLASIALRIAKGGVNDNFQGV
 VLQNVRFVFGTTPEDILRNKGCSSSTSVLLTLDNNVNGSSPAIRTNYIGHKTKDLQAICGISDELSSM
 VLELRGLRTIVTTLQDSIRKVTENKELANELRRPPLCYHNGVQYRNNEEWTVDSCTECHQNSVTICKK
 VSCPIMPCCSNATVPDGECCPRCWPSPSDSADDGWSPSEWTSCSTSCNGIQQRGRSCDSLNNRCEGSSVQT
 RTCHIQCCKRFKQDGGWSPWSSSVTCGDGVIIRIRLNSPSPQMNGKPCGEARETKACKKDACP
 INGGWGPSPWDICSVTCGGGVQKRSRLCANNPTPQFGGKDCVGDVTENQICNKQDCPIDGCLSNPCFAGV
 KCTSYPDGSKGACPPGYSGNGIQCTDVECKEVPDADFNHNGEHRCENTDPGYNCLPCPPRFTGSQPF
 GQGVEHATANKQVCKPRNPCTDGDHDCNNAKCNLYLGHYSDPMYRCECKPGYAGNGIICGEDTLDGWPN
 ENLVCVANATYHCKKDNCPNLPNSGQEDYDKDGIADACDDDDNDKIPDDRDNCFPHYNPAQYDYDRDDV
 GDRCDNCPYHNPDQADTDNNGEGDACAADIDGDGILNERDNCQYVYVNDQRDTMDGVDGQDCDNCLEH
 NPDQLDSDSDRIGDTCNNDQIDEDGHQNNLDNCPYVNPANQADHDKDGGKGDACDHHDDNDGIPDDKDC
 RLVNPDQKSDSDGDRGDAKDDFDHDSVPDIDDICPENVDISETDFRRFQMIPLDPKGTQNDPNWVVR
 HQKELVQTVNCDPGLAVGYDEFNAVDFSGTFFINTERDDYAGFVFGYQSSRFYVMMWKQVTSYQYWDT
 NPTRAQGYSGLSVKVNSTTGPGEHLRNALWHTGNTPGQVRTLWHDPRHIGWKDFAYRWRLSHRPKTGF
 IRVVMYEGKKIMADSGPIYDKTYAGGRLGLFVFSQEMVFFSDLKYECRDP

TRTRPLEQKLISEEDLAANDILDYKDDDDKV

Chromatograms: https://cdn.origene.com/chromatograms/mk6204_e07.zip

Restriction Sites: SgfI-MluI

Cloning Scheme:

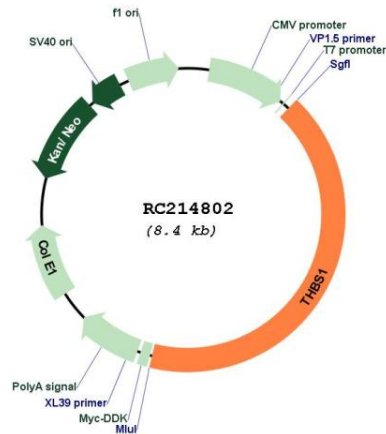


ACCN: NM_003246

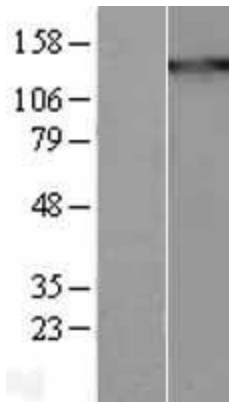
ORF Size: 3510 bp

OTI Disclaimer:	The molecular sequence of this clone aligns with the gene accession number as a point of reference only. However, individual transcript sequences of the same gene can differ through naturally occurring variations (e.g. polymorphisms), each with its own valid existence. This clone is substantially in agreement with the reference, but a complete review of all prevailing variants is recommended prior to use. More info
OTI Annotation:	This clone was engineered to express the complete ORF with an expression tag. Expression varies depending on the nature of the gene.
Components:	The ORF clone is ion-exchange column purified and shipped in a 2D barcoded Matrix tube containing 10ug of transfection-ready, dried plasmid DNA (reconstitute with 100 ul of water).
Reconstitution Method:	<ol style="list-style-type: none">1. Centrifuge at 5,000xg for 5min.2. Carefully open the tube and add 100ul of sterile water to dissolve the DNA.3. Close the tube and incubate for 10 minutes at room temperature.4. Briefly vortex the tube and then do a quick spin (less than 5000xg) to concentrate the liquid at the bottom.5. Store the suspended plasmid at -20°C. The DNA is stable for at least one year from date of shipping when stored at -20°C.
Note:	Plasmids are not sterile. For experiments where strict sterility is required, filtration with 0.22um filter is required.
RefSeq:	NM_003246.4
RefSeq Size:	5820 bp
RefSeq ORF:	3513 bp
Locus ID:	7057
UniProt ID:	P07996
Cytogenetics:	15q14
Domains:	tsp_1, VWC, EGF_CA, TSPN, tsp_3, EGF, EGF
Protein Families:	Druggable Genome
Protein Pathways:	Bladder cancer, ECM-receptor interaction, Focal adhesion, p53 signaling pathway, TGF-beta signaling pathway
MW:	129.38 kDa
Gene Summary:	The protein encoded by this gene is a subunit of a disulfide-linked homotrimeric protein. This protein is an adhesive glycoprotein that mediates cell-to-cell and cell-to-matrix interactions. This protein can bind to fibrinogen, fibronectin, laminin, type V collagen and integrins alpha-V/beta-1. This protein has been shown to play roles in platelet aggregation, angiogenesis, and tumorigenesis. [provided by RefSeq, Jul 2008]

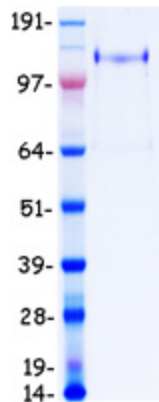
Product images:



Circular map for RC214802



Western blot validation of overexpression lysate (Cat# [LY401119]) using anti-DDK antibody (Cat# [TA50011-100]). Left: Cell lysates from untransfected HEK293T cells; Right: Cell lysates from HEK293T cells transfected with RC214802 using transfection reagent MegaTran 2.0 (Cat# [TT210002]).



Coomassie blue staining of purified THBS1 protein (Cat# [TP314802]). The protein was produced from HEK293T cells transfected with THBS1 cDNA clone (Cat# RC214802) using MegaTran 2.0 (Cat# [TT210002]).