

Product datasheet for **RC214801**

DNAJC6 (NM_014787) Human Tagged ORF Clone

Product data:

Product Type:	Expression Plasmids
Product Name:	DNAJC6 (NM_014787) Human Tagged ORF Clone
Tag:	Myc-DDK
Symbol:	DNAJC6
Synonyms:	DJC6; PARK19
Mammalian Cell Selection:	Neomycin
Vector:	pCMV6-Entry (PS100001)
E. coli Selection:	Kanamycin (25 ug/mL)



[View online »](#)

ORF Nucleotide
Sequence:

>RC214801 representing NM_014787
Red=Cloning site Blue=ORF Green=Tags(s)

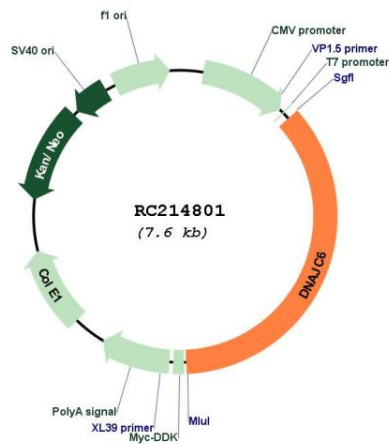
TTTTGTAATACGACTCACTATAGGGCGGCCGGAATTCGTCGACTGGATCCGGTACCGAGGAGATCTGCC
GCC**CGCATCGCC**

ATGAAAGATTCTGAAAATAAAGGTGCCTCATCTCCAGACATGGAGCCAGCTATGGGGGAGGTCTCTTTG
ACATGGTAAAAGGAGGTGCAGGGAGGCTCTTTAGTAACCTAAAGGACAACCTTAAAAGACACCCTCAAAGA
CACATCTTCTAGAGTGATACAATCTGTGACCAGCTACACAAAGGAGATTTAGACTTCACCTATGTTACC
TCCAGAATTATTGTGATGTCCTTCTCTGGACAATGTTGACATAGGATTCAGGAATCAGGTTGATGACA
TTCGAAGCTTTTTGGATTCCAGACATCTTGACCACTACACAGTATAACAATCTGTACCTAAGTCTTATCG
AACTGCCAAGTTTACAGCCGGTCTCAGAATGCAGTTGGCCATTAGGCAGGCTCCAGTCTGCACAAC
CTTTTTGTGTGTGCGAATATGTATAACTGGCTACTGCAGAATCCAAAAATGTCTGTGTGTGCCACT
GCTTGGATGGACGGCGGCATCAATCTGGTTGGTGTATGTTCAATTTCTGTAATCTCTACTCTAC
TCCTGGCCAGCCATTGATTGCTATATGCAAAGCGACCAGGAATTGGACTTTCACCATCCCATAGGAGA
TACCTGGGCTATATGTGTGACCTACTGGCAGACAAGCCCTACCGCCCTCACTTCAAGCCTCTCACAATTA
AGTCGATCACTGTGAGTCCAATACCCCTTTTCAACAAACAGAGGAATGGATGTCGCCCTTACTGTGATGT
ACTCATTGGAGAAACAAAATAATTGACTTGCACAGATTTTGAACGAATGAAAGAATATCGTGTCCAA
GATGGAAAAATCTTCATCCCTTGAACATCACTGTGCAAGGAGACGTGGTTGTTCCATGTATCACTTGA
GGTCAACCATTGGGAGCCGGCTACAGGCTAAGGTGACCAACACACAGATATCCAGCTTCAGTTTACAC
TGGATTCATACCACTGGACACAACAGTTTTAAAGTTACCAAGCCTGAGTTAGATGCATGTGATGTACCA
GAAAAATATCCTCAGCTATTTCAAGTGACACTGGATGTAGAACTACAGCCCCATGACAAAGTAATAGACT
TAATCCACCATGGGAACATTACTGCACAAAAGATGTCATCCAGCATCCTCTTCTCTCACCAGGA
ACATCAAGATACGCTGGCCTTAGGAGGACAGGCTCCAATAGATATCCCTCCAGACAACCCAGGCATTAC
GGACAAAGTGTTTTCTTTCCTCTCTGTTGGCAAGATCAGAAATCGGAGAAGTCATTCTGTGAGGAGG
ACCACGCTGCCCTAGTGAATCAGGAAAGTGAGCAATCAGATGATGAACCTTCTGACACTTTCCAGTCCGCA
TGGCAATGCCAATGGTGACAAGCCTCATGGAGTCAAGAAGCCAGCAAAAAGCAGCAGGAGCCAGCAGCC
CCTCCACCCCTGAGGATGTGGACCTTTTGGCCCTGGAAGGCTGCAATGAGTAACAGCTTCTCTCCGC
CAGCGGCTCTCCACCAATTCTGAACTACTGAGTGACCTGTTTGGGGTGGAGGTGCAGCTGGTCCAC
CCAGGCTGGACAGTCAGGAGTGAAGATGTGTTTCATCCTAGTGGACCTGCGTCTACCCAGTCAACACCA
CGCGGCTCTGCCACCTCCACCTCTGCGTCTCAACCCTAAGAGTGGGAGAAGGTGCCACCTTTGACCCAT
TTGGAGACCTTCTAAACCATCAGGTGAGGATTTGCTGGGTTCTTTCTGAACACATCCAGTGCTTCCAG
TGACCCCTTCTCCAGCCAACAAGAAGTCTTCGCCACAGTACATGCTTCTAGTACGCCTGCTGTGAAC
ATTCAGCCAGATGTTTCTGGAGTTGGGACTGGCATGCTAAACCAGGAGGCTTTGGAATGGGAAGCAAGT
CAGCTGCCACCAGCCAAACCGGATCCTCGCATGGTACTCCACCCATCAAAGCAAACCCAGACTCTGGA
TCCTTTTGGCGACCTTGGGACACTAGGTAGTCTTCTCTTGGCAGCAAACCCACCACCAACTGGATTG
GGTGGAGGATCCCGCTCTCAGCTCGCCACAGAAGGCGTCTCCCAGCCTATGGGTGGCGGGTGGCAGC
AGGGAGGTGCCTACAACCTGGCAGCAGCCACAGCCTAAGCCTCAGCCAGCATGCCCACTCTCTCCCA
GAACCGACCAACTACAACGTGAGCTTCTCAGCCATGCCTGGGGGCCAGAACGAACGTGGGAAAGGATCA
AGTAATTTGGAAGGAAACAAAAGCAGCTGATTTTGAAGACCTACTCTCTGGTCAAGGTTTCAATGCTC
ACAAAGACAAAAGGGCCCTCGGACAATAGCTGAGATGAGAAAGGAGGAAATGGCCAAGGAAATGGATCC
TGAGAAATTAAGATTCTGGAATGGATTGAAGGCAAAGAAAGAAATATCAGAGCCCTTCTTCCACGATG
CATACCGTACTATGGGCTGGGAGACCAAGTGGAAACCAGTTGGCATGGCAGACCTGGTAACACCAGAGC
AGGTGAAGAAGGTGTACAGGAAGGCTGTCTGGTGGTGCACCCAGATAAAGCTACTGGGCAACCCTATGA
ACAATACGCAAAGATGATTTTCATGGAGCTCAATGATGCCTGGTCTGAATTTGAAAACCAAGGCCAAAAG
CCCTTATAT

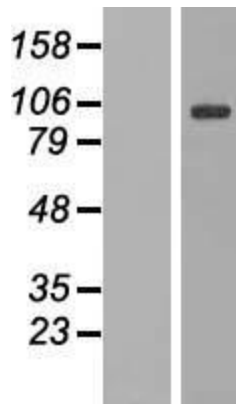
ACGCGTACGCGGCGCTCGAGCAGAACTCATCTCAGAAGAGGATCTGGCAGCAAATGATATCCTGGATT
ACAAGGATGACGACGATAAAGTTTAA

OTI Disclaimer:	The molecular sequence of this clone aligns with the gene accession number as a point of reference only. However, individual transcript sequences of the same gene can differ through naturally occurring variations (e.g. polymorphisms), each with its own valid existence. This clone is substantially in agreement with the reference, but a complete review of all prevailing variants is recommended prior to use. More info
OTI Annotation:	This clone was engineered to express the complete ORF with an expression tag. Expression varies depending on the nature of the gene.
Components:	The ORF clone is ion-exchange column purified and shipped in a 2D barcoded Matrix tube containing 10ug of transfection-ready, dried plasmid DNA (reconstitute with 100 ul of water).
Reconstitution Method:	<ol style="list-style-type: none"> 1. Centrifuge at 5,000xg for 5min. 2. Carefully open the tube and add 100ul of sterile water to dissolve the DNA. 3. Close the tube and incubate for 10 minutes at room temperature. 4. Briefly vortex the tube and then do a quick spin (less than 5000xg) to concentrate the liquid at the bottom. 5. Store the suspended plasmid at -20°C. The DNA is stable for at least one year from date of shipping when stored at -20°C.
RefSeq:	NM_014787.4
RefSeq Size:	5750 bp
RefSeq ORF:	2742 bp
Locus ID:	9829
UniProt ID:	O75061
Cytogenetics:	1p31.3
Domains:	Dnaj
Protein Families:	Druggable Genome
Protein Pathways:	Endocytosis
MW:	99.8 kDa
Gene Summary:	DNAJC6 belongs to the evolutionarily conserved DNAJ/HSP40 family of proteins, which regulate molecular chaperone activity by stimulating ATPase activity. DNAJ proteins may have up to 3 distinct domains: a conserved 70-amino acid J domain, usually at the N terminus, a glycine/phenylalanine (G/F)-rich region, and a cysteine-rich domain containing 4 motifs resembling a zinc finger domain (Ohtsuka and Hata, 2000 [PubMed 11147971]).[supplied by OMIM, Mar 2008]

Product images:



Circular map for RC214801



Western blot validation of overexpression lysate (Cat# [LY415000]) using anti-DDK antibody (Cat# [TA50011-100]). Left: Cell lysates from untransfected HEK293T cells; Right: Cell lysates from HEK293T cells transfected with RC214801 using transfection reagent MegaTran 2.0 (Cat# [TT210002]).