

Product datasheet for **RC214788**

Anoctamin 7 (ANO7) (NM_001001891) Human Tagged ORF Clone

Product data:

Product Type:	Expression Plasmids
Product Name:	Anoctamin 7 (ANO7) (NM_001001891) Human Tagged ORF Clone
Tag:	Myc-DDK
Symbol:	Anoctamin 7
Synonyms:	D-TMPP; DTMPP; IPCA-5; IPCA5; NGEP; PCANAP5; PCANAP5L; TMEM16G
Mammalian Cell Selection:	Neomycin
Vector:	pCMV6-Entry (PS100001)
E. coli Selection:	Kanamycin (25 ug/mL)



[View online »](#)

ORF Nucleotide Sequence:

>RC214788 representing NM_001001891
 Red=Cloning site Blue=ORF Green=Tags(s)

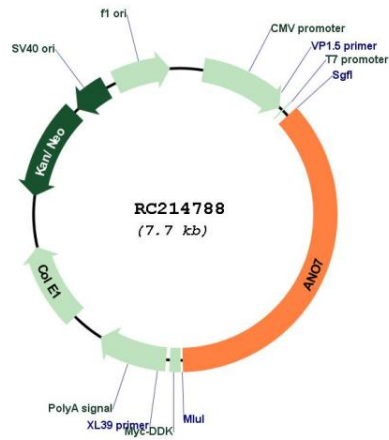
TTTTGTAATACGACTCACTATAGGGCGGCCGGAATTCGTCGACTGGATCCGGTACCGAGGAGATCTGCC
 GCC**CGGATCGCC**

ATGCGAATGGCTGCCACTGCCTGGGCGGGCTCCAAGGGCCACCCCTCCCACCCTCTGTCCCGCAGTGA
 GGACGGGACTCTACTGCCGAGACCAGGCTCACGCTGAGAGGTGGGCCATGACCTCCGAGACCTTCCGG
 AAGCCACTGTGCCAGGAGCAGGATGCTGCGGCGACGGGCCAGGAAGAGGACAGCACCGTCTGATCGAT
 GTGAGCCCCCTGAGGCAGAGAAGAGGGCTCTTACGGGAGCACAGCCACGCCTCGGAGCCAGGTGGAC
 AGCAAGCGGCCGCTGCAGAGCTGGGAGTCTGCCAAGCCCCGGATCGACTTCGTCCTCGTTTGGGAGGA
 GGACCTGAAGCTAGACAGGCAGCAGGACAGTGCCGCCGGGACAGAACAGACATGCACAGGACCTGGCGG
 GAGACTTTCTGGATAATCTTCGTGCGGCTGGGCTGTGTGTAGACCAGCAGGACGTCCAGGACGGGAACA
 CCACAGTGCCTACGCCCTCCTCAGCGCCTCCTGGGCTGTGCTGCTACTACGCCGAAGACCTGCGCCT
 GAAGCTGCCCTTGCAAGGATTACCAACCAGGCCTCCAACCTGGTGGCCCGCCTGCTGGCATGGCTGGGC
 ATCCCCAACGTCCTGCTGGAGGTTGTGCCAGACGTACCCCCGAGTACTACTCCTGCCGGTTCAGAGTGA
 ACAAGCTGCCACGCTTCCTCGGGAGTGACAACCAGGACACCTTCTTACAAAGCACCAAGAGGCACCAAAAT
 TCTGTTTGAGATCCTGGCCAAGACCCCGTATGGCCACGAGAAGAAAAACCTGCTTGGGATCCACCAGCTG
 CTGGCAGAGGGTGTCTCAGTGGCCGCTTCCCCCTGCATGACGGCCCTTCAAGACGCCCCAGAGGGCC
 CGCAGGCTCCACGCCTCAACCAGCGCAAGTCTTTTCCAGCACTGGGCGCGCTGGGGCAAGTGGAAACA
 GTACCAGCCCCTGGACCAGTGGCAGGTACTTCGGGGAGAAGGTGGCCCTTACTTCGCTGGCTCGGG
 TTTTACACAGGCTGGCTCCTGCCAGCGCAGTGGTGGGCACACTGGTGTCTCTGGTGGGCTGCTTCTGG
 TGTTCTCAGACATACCCACGCAGGAATGTGTGGCAGCAAGGACAGCTTCAGAGATGCCCCACTTTGCCT
 CGACTGCCCTTTCTGGCTGCTCCTCAGCGCCTGTGCCCTGGCCAGGCGCCGGCTGTTTCGACCAGGCG
 GGCACCGTGTCTTTCAGCTTGTTCATGGCACTGTGGGCCGTGCTGCTGCTGGAGTACTGGAAGCGGAAGA
 GCGCCACGCTGGCCTACCGCTGGGACTGCTGACTACGAGGACACTGAGGAGAGGCCTCGGCCCCAGTT
 TGCCGCTCAGCCCCATGACAGCCCCGAACCCATCACGGGTGAGGACGAGCCCTACTTCCCTGAGAGG
 AGCCGCGCGCCGCATGCTGGCCGGCTCTGTGGTGTGCTGGTGTGATGGTGGCCGTGGTGGTGTGCTGCC
 TCGTGTCTATCATCTGTACCGTGCATCATGGCCATCGTGGTGTCCAGGTGGGCAACACCCCTTCTCGC
 AGCCTGGGCTCTCGCATCGCCAGCCTCACGGGTCTGTAGTGAACCTCGTCTTTCATCCTCATCCTCTCC
 AAGATCTATGTATCCCTGGCCACGTCTGACACGATGGGAAATGCACCCACCCAGACCAAGTTCGAGG
 ACGCCTTACCCCTCAAGGTGTTTCATCTTCCAGTTCGTCAACTTCTACTCCTACCCGCTACATTGCCTT
 CTTCAAGGGCAGGTTTGTGGGATACCCAGGCAACTACCACACCTTGTGGAGTCCGCAATGAGGAGTGC
 GCGGCTGGAGGCTGCCTGATCGAGCTGGCACAGGAGCTCCTGGTTCATCATGGTGGCAAGCAGGTATCA
 ACAACATGCAGGAGGTCCTATCCCGAAGCTAAAGGGCTGGTGGCAGAAGTTCGGCTTCGCTCCAAGAA
 GAGGAAGGCGGGAGCTTCTGCAGGGCTAGCCAGGGCCCTGGGAGGACGACTATGAGCTTGTGCCCTGT
 GAGGGTCTGTTTACGAGTACCTGGAAATGGTGTGCACTTCGGCTTCGTCACCATCTTCGTGGCCGCT
 GTCCGCTCGCCCGCTCTTCGCCCTGCTCAACAACCTGGGTGGAGATCCGCTTGGACGCGCGCAAGTTCGT
 CTGCGAGTACCGGCGCCCGGTGGCCGAGCGCGCCAGGACATCGGCATCTGGTTCACATCTCTGGCGGC
 CTCACGCACCTGGCGGTATCAGCAACGCCTTCTCCTGGCCTTCTCGTCCGACTTCTGCGCGCGGCT
 ACTACCGTGGACCCGCGCCACGACCTGCGCGGCTTCTCAACTTACGCTGGCGGAGCCCGTCCCTC
 CTTTCGCCCGCGCACAAACCGCACGTGCAGGTATCGGGCTTTCGGGATGACGATGGACATTATCCAG
 ACCTACTGGAATCTTCTTGCATCCGCCTGGCCTTCGTATTGTGTTTGGAGCATGTGGTTTTCTCCGTTG
 GCCGCTCCTGGACCTCCTGGTGCCTGACATCCAGAGTCTGTGGAGATCAAAGTGAAGCGGGAGTACTA
 CCTGGCTAAGCAGGCACTGGCTGAGAATGAGGTTCTTTTTGGAACGAACGAACAAGGATGAGCAGCCC
 GAGGGCTCAGAGCTCAGCTCCACTGGACACCTTACGGTTCCTCAAGGCCAGCCAGCTGCAGCAG

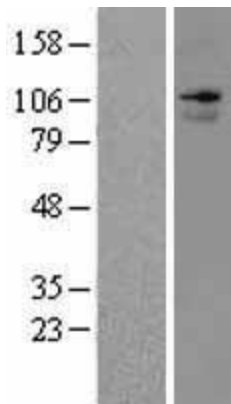
ACGCGTACGCGGCGGCTCGAGCAGAAACTCATCTCAGAAGAGGATCTGGCAGCAAATGATATCCTGGATT
 ACAAGGATGACGACGATAAGGTTTAA

OTI Disclaimer:	The molecular sequence of this clone aligns with the gene accession number as a point of reference only. However, individual transcript sequences of the same gene can differ through naturally occurring variations (e.g. polymorphisms), each with its own valid existence. This clone is substantially in agreement with the reference, but a complete review of all prevailing variants is recommended prior to use. More info
OTI Annotation:	This clone was engineered to express the complete ORF with an expression tag. Expression varies depending on the nature of the gene.
Components:	The ORF clone is ion-exchange column purified and shipped in a 2D barcoded Matrix tube containing 10ug of transfection-ready, dried plasmid DNA (reconstitute with 100 ul of water).
Reconstitution Method:	<ol style="list-style-type: none"> 1. Centrifuge at 5,000xg for 5min. 2. Carefully open the tube and add 100ul of sterile water to dissolve the DNA. 3. Close the tube and incubate for 10 minutes at room temperature. 4. Briefly vortex the tube and then do a quick spin (less than 5000xg) to concentrate the liquid at the bottom. 5. Store the suspended plasmid at -20°C. The DNA is stable for at least one year from date of shipping when stored at -20°C.
RefSeq:	NM_001001891.1 , NP_001001891.1
RefSeq Size:	3308 bp
RefSeq ORF:	2802 bp
Locus ID:	50636
UniProt ID:	Q6IWH7
Cytogenetics:	2q37.3
Protein Families:	Transmembrane
MW:	105.4 kDa
Gene Summary:	This prostate-specific gene encodes a cytoplasmic protein, as well as a polytopic membrane protein which may serve as a target in prostate cancer diagnosis and immunotherapy. Alternative splicing results in multiple transcript variants encoding different isoforms. [provided by RefSeq, Aug 2011]

Product images:



Circular map for RC214788



Western blot validation of overexpression lysate (Cat# [LY424262]) using anti-DDK antibody (Cat# [TA50011-100]). Left: Cell lysates from untransfected HEK293T cells; Right: Cell lysates from HEK293T cells transfected with RC214788 using transfection reagent MegaTran 2.0 (Cat# [TT210002]).