

Product datasheet for **RC214784**

SUMF2 (NM_001042468) Human Tagged ORF Clone

Product data:

Product Type:	Expression Plasmids
Product Name:	SUMF2 (NM_001042468) Human Tagged ORF Clone
Tag:	Myc-DDK
Symbol:	SUMF2
Synonyms:	pFGE
Mammalian Cell Selection:	Neomycin
Vector:	pCMV6-Entry (PS100001)
E. coli Selection:	Kanamycin (25 ug/mL)
ORF Nucleotide Sequence:	>RC214784 representing NM_001042468 Red=Cloning site Blue=ORF Green=Tags(s)

TTTTGTAATACGACTCACTATAGGGCGGCCGGAATTCGTCGACTGGATCCGGTACCGAGGAGATCTGCC
 GCC**CGATCGC**

ATGAGGGCGCATGCGCAGCGGGCCGTGGGTGTACGCGGCGCAGCGCGCAGTCCTGATGGCCCGGCATG
 GGTTACCGCTGCTGCCCTGCTGTCGCTCCTGGTCGGCGCGTGGCTCAAGCTAGGAAATGGACAGGCTAC
 TAGCATGGTCCAACCTGCAGGGTGGGAGATTCTGATGGGAACAAATCTCCAGACAGCAGAGATGGTGAA
 GGGCCTGTGCGGGAGGCGACAGTGAAACCCTTTGCCATCGACATATTTCTGTACCAACAAAGATTTC
 GGTACATCAGGGATTTTGTGTCAGGGAGAAAAAGTATCGGACAGAAGCTGAGATGTTTGGATGGAGCTTTGT
 CTTTGAGGACTTTGTCTCTGATGAGCTGAGAAACAAAGCCACCCAGCCAATGAAGTCTGTACTCTGGTGG
 CTTCCAGTGGAAGGCATTTTGGAGGCAGCCTGCAGGTCTGGCTCTGGCATCCGAGAGAGACTGGAGC
 ACCCAGTGTTACACGTGAGCTGGAATGACGCCCCTGCCTACTGTGCTTGGCGGGGAAAACGACTGCCAC
 GGAGGAAGAGTGGGAGTTTGCCGCCGAGGGGGCTTGAAGGTCAGTTTACCCATGGGGGAACCTGGTTC
 CAGCCAAACCGCACCAACCTGTGGCAGGGAAAGTTCCCAAGGGAGACAAAGCTGAGGATGGCTTCCATG
 GAGTCTCCCCAGTGAATGCTTTCCCGCCGAGAACACTACGGGCTCTATGACCTCTGGGAACGTGTG
 GGAGTGGACAGCATCACCGTACCAGGCTGCTGAGCAGGACATGCGCGTCTCCGGGGGCATCCTGGATC
 GACACAGCTGATGGCTCTGCCAATCACCGGGCCGGGTACCACCAGGATGGGCAACACTCCAGATTGAG
 CCTCAGACAACCTCGGTTTCCGCTGTGCTGCAGACGACGCGCGGCCGCCAGGGGAGCTG

ACGCGTACGCGGCCGCTCGAGCAGAACTCATCTCAGAAGAGGATCTGGCAGCAATGATATCCTGGATT
 ACAAGGATGACGACGATAAGGTTTAA


[View online »](#)

Protein Sequence: >RC214784 representing NM_001042468
 Red=Cloning site Green=Tags(s)

MRAHAQGRGCTRRSAAVLMARHGLPLLPLLSLLVGAWLKLGNQATSMVQLQGGRFLMGTNSPDSRDGE
 GPVREATVKPFAIDIFPVTNKDFRYIRDFVREKKYRTEAEMFGWSFVFEDFVSDELRNKATQPMKSVLWW
 LPVEKAFWRQPAGPGSGIRERLEHPVLHVSWNDARAYCAWRGKRLPTEEEWEFAARGGLKGQVYPWGNWF
 QPNRTNLWQGFPGDKAEDGFHGVSPVNAFPAQNNYGLYDLLGNVWEWTASPYQAAEQDMRVLRGASWI
 DTADGSANHRARVTTRMGNTPDSASDNLGFRCAADAGRPPGEL

TRTRPLEQKLISEEDLAANDILDYKDDDDKV

Chromatograms: https://cdn.origene.com/chromatograms/mk8052_b06.zip

Restriction Sites: SgfI-MluI

Cloning Scheme:



ACCN: NM_001042468

ORF Size: 969 bp

OTI Disclaimer: The molecular sequence of this clone aligns with the gene accession number as a point of reference only. However, individual transcript sequences of the same gene can differ through naturally occurring variations (e.g. polymorphisms), each with its own valid existence. This clone is substantially in agreement with the reference, but a complete review of all prevailing variants is recommended prior to use. [More info](#)

OTI Annotation: This clone was engineered to express the complete ORF with an expression tag. Expression varies depending on the nature of the gene.

Components: The ORF clone is ion-exchange column purified and shipped in a 2D barcoded Matrix tube containing 10ug of transfection-ready, dried plasmid DNA (reconstitute with 100 ul of water).

Reconstitution Method:

1. Centrifuge at 5,000xg for 5min.
2. Carefully open the tube and add 100ul of sterile water to dissolve the DNA.
3. Close the tube and incubate for 10 minutes at room temperature.
4. Briefly vortex the tube and then do a quick spin (less than 5000xg) to concentrate the liquid at the bottom.
5. Store the suspended plasmid at -20°C. The DNA is stable for at least one year from date of shipping when stored at -20°C.

Note: Plasmids are not sterile. For experiments where strict sterility is required, filtration with 0.22um filter is required.

RefSeq: [NM_001042468.1](#), [NP_001035933.2](#)

RefSeq Size: 2073 bp

RefSeq ORF: 915 bp

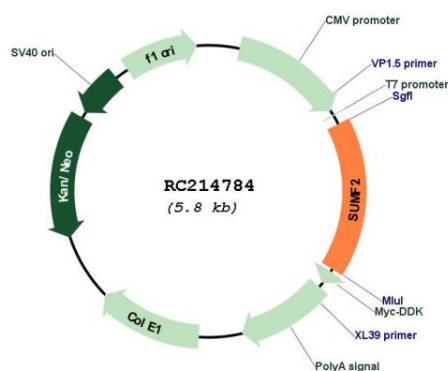
Locus ID: 25870

Cytogenetics: 7p11.2

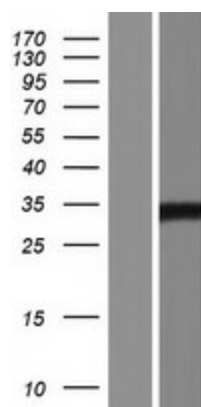
MW: 36.37 kDa

Gene Summary: The catalytic sites of sulfatases are only active if they contain a unique amino acid, C-alpha-formylglycine (FGly). The FGly residue is posttranslationally generated from a cysteine by enzymes with FGly-generating activity. The gene described in this record is a member of the sulfatase-modifying factor family and encodes a protein with a DUF323 domain that localizes to the lumen of the endoplasmic reticulum. This protein has low levels of FGly-generating activity but can heterodimerize with another family member - a protein with high levels of FGly-generating activity. Alternate transcriptional splice variants, encoding different isoforms, have been characterized. [provided by RefSeq, Jul 2008]

Product images:



Circular map for RC214784



Western blot validation of overexpression lysate (Cat# [LY420922]) using anti-DDK antibody (Cat# [TA50011-100]). Left: Cell lysates from untransfected HEK293T cells; Right: Cell lysates from HEK293T cells transfected with RC214784 using transfection reagent MegaTran 2.0 (Cat# [TT210002]).