

## Product datasheet for RC214782

### MAFA (NM\_201589) Human Tagged ORF Clone

#### Product data:

**Product Type:** Expression Plasmids  
**Product Name:** MAFA (NM\_201589) Human Tagged ORF Clone  
**Tag:** Myc-DDK  
**Symbol:** MAFA  
**Synonyms:** hMafA; INSDM; RIPE3b1  
**Mammalian Cell Selection:** Neomycin  
**Vector:** pCMV6-Entry (PS100001)  
**E. coli Selection:** Kanamycin (25 ug/mL)  
**ORF Nucleotide Sequence:** >RC214782 representing NM\_201589  
Red=Cloning site Blue=ORF Green=Tags(s)

TTTTGTAATACGACTCACTATAGGGCGGCCGGAATTCGTCGACTGGATCCGGTACCGAGGAGATCTGCC  
GCC**CGATCGCC**

ATGGCCGCGGAGCTGGCGATGGGCGCCGAGCTGCCAGCAGCCCGCTGGCCATCGAGTACGTCAACGACT  
TCGACCTGATGAAGTTCGAGGTGAAGAAGGAGCCTCCCGAGGCCGAGCGTTCTGCCACCGCTGCCGCC  
AGGCTCGTGTCTCGACGCCGCTCAGCACGCCCTGCTCCTCCGTGCCCTCCTCGCCAGCTTCTGCGCG  
CCCAGCCCGGGCACCGGGCGCGGGCGGGCGGGGGGGCGGGCGGGCTCGTCTCAGGCCGGGGCGCC  
CCGGGCCCGCCAGCGGGGCCCGGGCGCGCTCGGGGGCACCTCGGGGAAGCCGGCGCTGGAGGATCTGTA  
CTGGATGAGCGGCTACCAGCATCACTCAACCCGAGGCGCTCAACCTGACGCCCGAGGACGCGGTGGAG  
GCGCTCATCGGCAGCGGCCACCACGGCGCGCACCCAGGCGCGCACCCCGGGCGGCCGCCGAGCCTACG  
AGGCTTTCCGCGGCCCGGGCTTCGCGGGCGGGCGGGAGCGGACGACATGGGCGCCGCCACCACCACGG  
CGCGCACCGCCGCCACCACCACCACCGCCGCCACCACCACCACCACCACCACCACCATGGCGGC  
GCGGGACCGCGGTGGCGGGGCCACCACGTGCGCCTGGAGGAGCGCTTCTCCGACGACCAGCTGGTGT  
CCATGTCGGTGC GCGAGCTGAACCGCAGCTCCGCGGCTCAGCAAGGAGGAGGTATCCGGCTCAAGCA  
GAAGCGGCGCACGCTCAAGAACC CGGGCTACGCGCAGTCTCCGCTTCAAGCGGTGCAGCAGCGGCAC  
ATTCTGGAGAGCGAGAAGTGCCAACTCCAGAGCCAGGTGGAGCAGTGAAGCTGGAGTGGGGCGCCTGG  
CCAAAGAGCGGGACCTGTACAAGGAGAAAATACGAGAAGCTGGCGGGCCGGGGCGGCCCGGGAGCGCGGG  
CGGGGCCGGTTTCCCGGGGAGCCTTCGCCCGCCAGGCCGCTCCCGGGGGCCAAAGGCACGGCCGAC  
TTCTTCTG

**ACGCGT**ACGCGGCCGCTCGAGCAGAACTCATCTCAGAAGAGGATCTGGCAGCAATGATATCCTGGATT  
ACAAGGATGACGACGATAAGGTTTAA



[View online »](#)

**Protein Sequence:** >RC214782 representing NM\_201589  
Red=Cloning site Green=Tags(s)

MAAELAMGAELPSSPLAIEYVNDPDLMKFEVKKEPPEAERFCHRLPPGSLSSSTPLSTPCSSVSPSSPFCF  
 PSPGTGGGGGAGGGGSSQAGGAPGPPSGGPGAVGGTSGKPALEDLYWMSGYQHHLNPEALNLTPEDAVE  
 ALIGSGHHGAHHGAHHPAAAAAYEAFRPGFAGGGGADDMGAGHHHGAHHAHHHHHHHHHHHHHHGG  
 AGHGGGAGHHVRLLEERFSDQLVMSVRELNRLRGFSKEEVIRLKQKRRTLKNRGYAQSCRFKRVQQRH  
 ILESEKQLQSQVEQLKLEVGRLLAKERDLYKEYEKLGRGGPGSAGGAGFPREPSPQAGPGGAKGTAD  
 FFL

TRTRPLEQKLISEEDLAANDILDYKDDDDKV

**Chromatograms:** [https://cdn.origene.com/chromatograms/mg2950\\_b07.zip](https://cdn.origene.com/chromatograms/mg2950_b07.zip)

**Restriction Sites:** SgfI-MluI

**Cloning Scheme:**



**ACCN:** NM\_201589

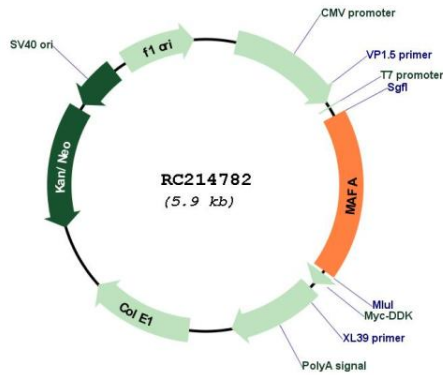
**ORF Size:** 1059 bp

**OTI Disclaimer:** Due to the inherent nature of this plasmid, standard methods to replicate additional amounts of DNA in E. coli are highly likely to result in mutations and/or rearrangements. Therefore, OriGene does not guarantee the capability to replicate this plasmid DNA. Additional amounts of DNA can be purchased from OriGene with batch-specific, full-sequence verification at a reduced cost. Please contact our customer care team at [custsupport@origene.com](mailto:custsupport@origene.com) or by calling 301.340.3188 option 3 for pricing and delivery.

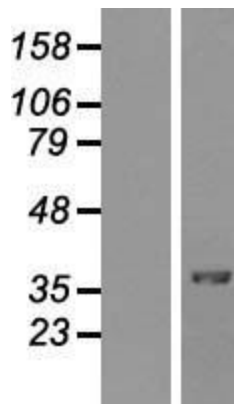
The molecular sequence of this clone aligns with the gene accession number as a point of reference only. However, individual transcript sequences of the same gene can differ through naturally occurring variations (e.g. polymorphisms), each with its own valid existence. This clone is substantially in agreement with the reference, but a complete review of all prevailing variants is recommended prior to use. [More info](#)

<b>OTI Annotation:</b>	This clone was engineered to express the complete ORF with an expression tag. Expression varies depending on the nature of the gene.
<b>Components:</b>	The ORF clone is ion-exchange column purified and shipped in a 2D barcoded Matrix tube containing 10ug of transfection-ready, dried plasmid DNA (reconstitute with 100 ul of water).
<b>Reconstitution Method:</b>	<ol style="list-style-type: none"><li>1. Centrifuge at 5,000xg for 5min.</li><li>2. Carefully open the tube and add 100ul of sterile water to dissolve the DNA.</li><li>3. Close the tube and incubate for 10 minutes at room temperature.</li><li>4. Briefly vortex the tube and then do a quick spin (less than 5000xg) to concentrate the liquid at the bottom.</li><li>5. Store the suspended plasmid at -20°C. The DNA is stable for at least one year from date of shipping when stored at -20°C.</li></ol>
<b>Note:</b>	Plasmids are not sterile. For experiments where strict sterility is required, filtration with 0.22um filter is required.
<b>RefSeq:</b>	<a href="#">NM_201589.4</a>
<b>RefSeq Size:</b>	1062 bp
<b>RefSeq ORF:</b>	1062 bp
<b>Locus ID:</b>	389692
<b>UniProt ID:</b>	<a href="#">Q8NHW3</a>
<b>Cytogenetics:</b>	8q24.3
<b>Protein Families:</b>	Druggable Genome, ES Cell Differentiation/IPS
<b>Protein Pathways:</b>	Maturity onset diabetes of the young, Type II diabetes mellitus
<b>MW:</b>	36.8 kDa
<b>Gene Summary:</b>	MAFA is a transcription factor that binds RIPE3b, a conserved enhancer element that regulates pancreatic beta cell-specific expression of the insulin gene (INS; MIM 176730) (Olbrot et al., 2002 [PubMed 12011435]).[supplied by OMIM, Mar 2008]

Product images:



Circular map for RC214782



Western blot validation of overexpression lysate (Cat# [LY404473]) using anti-DDK antibody (Cat# [TA50011-100]). Left: Cell lysates from untransfected HEK293T cells; Right: Cell lysates from HEK293T cells transfected with RC214782 using transfection reagent MegaTran 2.0 (Cat# [TT210002]).