

Product datasheet for RC214777L2

RBM15 (NM_022768) Human Tagged Lenti ORF Clone

Product data:

Product Type:	Expression Plasmids
Product Name:	RBM15 (NM_022768) Human Tagged Lenti ORF Clone
Tag:	mGFP
Symbol:	RBM15
Synonyms:	OTT; OTT1; SPEN
Mammalian Cell Selection:	None
Vector:	pLenti-C-mGFP (PS100071)
E. coli Selection:	Chloramphenicol (34 ug/mL)
ORF Nucleotide Sequence:	The ORF insert of this clone is exactly the same as(RC214777).
Restriction Sites:	SgfI-MluI
Cloning Scheme:	

Cloning sites used for ORF Shuttling:



* The last codon before the Stop codon of the ORF.

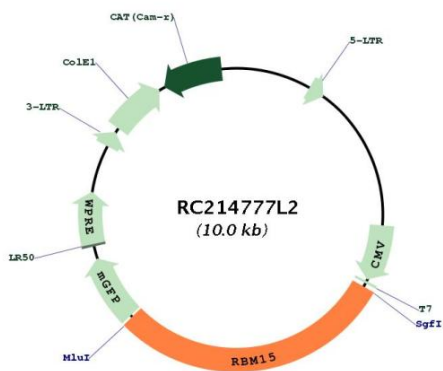
ACCN:	NM_022768
ORF Size:	2931 bp



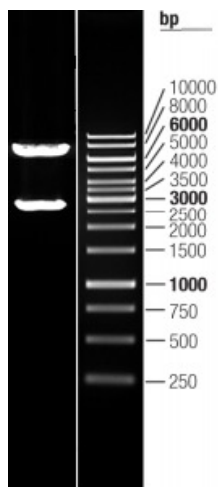
[View online »](#)

OTI Disclaimer:	The molecular sequence of this clone aligns with the gene accession number as a point of reference only. However, individual transcript sequences of the same gene can differ through naturally occurring variations (e.g. polymorphisms), each with its own valid existence. This clone is substantially in agreement with the reference, but a complete review of all prevailing variants is recommended prior to use. More info
OTI Annotation:	This clone was engineered to express the complete ORF with an expression tag. Expression varies depending on the nature of the gene.
Components:	The ORF clone is ion-exchange column purified and shipped in a 2D barcoded Matrix tube containing 10ug of transfection-ready, dried plasmid DNA (reconstitute with 100 ul of water).
Reconstitution Method:	<ol style="list-style-type: none">1. Centrifuge at 5,000xg for 5min.2. Carefully open the tube and add 100ul of sterile water to dissolve the DNA.3. Close the tube and incubate for 10 minutes at room temperature.4. Briefly vortex the tube and then do a quick spin (less than 5000xg) to concentrate the liquid at the bottom.5. Store the suspended plasmid at -20°C. The DNA is stable for at least one year from date of shipping when stored at -20°C.
RefSeq:	NM_022768.4 , NP_073605.4
RefSeq Size:	3450 bp
RefSeq ORF:	2934 bp
Locus ID:	64783
UniProt ID:	Q96T37
Cytogenetics:	1p13.3
Protein Families:	Transcription Factors
MW:	107 kDa
Gene Summary:	Members of the SPEN (Split-end) family of proteins, including RBM15, have repressor function in several signaling pathways and may bind to RNA through interaction with spliceosome components (Hiriart et al., 2005 [PubMed 16129689]).[supplied by OMIM, Feb 2009]

Product images:



Circular map for RC214777L2



Double digestion of RC214777L2 using SgfI and MluI