

Product datasheet for **RC214777**

RBM15 (NM_022768) Human Tagged ORF Clone

Product data:

Product Type:	Expression Plasmids
Product Name:	RBM15 (NM_022768) Human Tagged ORF Clone
Tag:	Myc-DDK
Symbol:	RBM15
Synonyms:	OTT; OTT1; SPEN
Mammalian Cell Selection:	Neomycin
Vector:	pCMV6-Entry (PS100001)
E. coli Selection:	Kanamycin (25 ug/mL)



[View online »](#)

ORF Nucleotide Sequence:

>RC214777 representing NM_022768
 Red=Cloning site Blue=ORF Green=Tags(s)

TTTTGTAATACGACTCACTATAGGGCGGCCGGGAATTCGTCGACTGGATCCGGTACCGAGGAGATCTGCC
 GCC**CGCATCGCC**

ATGAGGACTGCGGGCGGGACCCTGTGCCGCGCGGAGTCCAAGATGGCGCGTGGCGTTCCGCTGTGTG
 AAACGAGCGCGGGCGGGGTTACTCAGCTCCGCGGAGACGACCTCCGACGACCCGCAACAATGAAGGG
 AAAAGAGCGCTCGCCAGTGAAGGCCAAACGCTCCCGTGGTGGTGAAGGACTCGACTTCCCGCGGTGAGCGG
 AGCAAGAAGTTAGGGGGCTCTGGTGGCAGCAATGGGAGCAGCAGCGAAAGACCGATAGCGGCGGTGGGT
 CGCGGGGAGTCTCCACCTGGACAAGTCCAGCAGTGGAGGTGGCAGCCGCGAGTATGATACCGGTGGGGG
 CAGCTCCAGTAGCCGCTTGCATAGTTATAGCTCCCGAGCACAAAAATCTTCGGGCGGGGGCAGTCCG
 CGCAGCAGCTCCCGGGTGGAGGCGGGGAGTACGTTCTCTGGGCGCCTCTCAGCTCCCGCGCGG
 GGGACGGCGCGGAATAACAAGACTCTGAAGATAAGCGAGTTGGGGTCCCAGCTTAGTGACGAAGCGGTGGA
 GGACGGCTGTTTCATGAGTTCAAACGCTTCGGTATGTAAGTGTGAAAATCAGTCATCTGTCCGGTTCT
 GGCAGCGGGGATGAGCGGTAGCCTTTGTGAACCTCCGCGGCCAGAGGACGCGCGGGCGGCCAAGCATG
 CCAGAGGCCCGCTGGTGCTCTATGACCGCCTCTGAAGATAGAAGCTGTGTATGTGAGCCGGCGCCGAG
 CCGCTCCCTTTAGACAAAGATACTTATCTCCATCAGCCAGTGTGGTGGGGCCTCTGTAGGTGGTCCAC
 CGGCACCCCTGGAGGTGGTGGAGGCCAGAGTCACTTCCCTGGTGGCGCTGCTTTGGGATACAGAG
 ACTACCGCTGCAGCAGTTGGCTCTTGGCCGCTGCCCTCCACCTCCGCCACCATTGCCTCGAGACCT
 GGAGAGAAAAGAGACTACCCGTTCTATGAGAGAGTGCGCCCTGCATACAGTCTTGGCCAAAGGTGGGA
 GCTGGAGCAGGTGCTGCTCTTTAGAGAAGTGGATGAGATTTACCCGAGGATGATCAGCGAGCTAAC
 GGACGCTCTTCTGGCAACCTAGACATCACTGTAACGAGAGTGAATTTAAGAAGGGCGTTTGTGCTCT
 TGGAGTCATCACAGAAGTAGATATCAAGAGGCCTTCTCGCGGCCAGACTAGTACTTACGGCTTTCTCAAA
 TTTGAGAACTTAGATATGTCTCACCGGGCCAAATTAGCAATGTCTGGCAAATTAATTCGGAATCCTA
 TCAAAATTGGTTATGGTAAAGCTACACCCACCACCCGCTCTGGGTGGGAGGCCTGGGACCTTGGTTCC
 TCTTGCTGCCCTGGCAGGAAATTTGATCGATTTGGCACCATACGCACCATAGACTACCGAAAAGGTGAT
 AGTTGGGCATATATCCAGTATGAAAGCCTGGATGCAGCGCATGCTGCCTGGACCCATATGCGGGGCTTCC
 CACTTGGTGGCCAGATCGACGCTTAGAGTAGACTTTGCCGACCCGAACATCGTTACCAGCAGCAGTA
 TCTGCAGCCTCTGCCCTGACTCATTATGAGCTGGTGCAGATGCTTTTGGACATCGGGCACCAGACCT
 TTGAGGGGTGCTCGGGATAGGACACCACCTTACTATACAGAGATCGTGATAGGGACCTTATCCTGACT
 CTGATTGGGTGCCACCCACCCAGTCCGAGAACGCAGCACTCGGACTGCAGTACTTCTGTGCCTGC
 TTACGAGCCACTGGATAGCCTAGATCGCAGGCGGGATGGTTGGTCTTGGACCGGGACAGAGGTGATCGA
 GATCTGCCAGCAGCAGAGACCAGCCTAGGAAGCGAAGGCTGCCTGAGGAGAGTGGAGGACGTATCTGG
 ATAGGTCTCTGAGAGTGACCGCCACGAAAACGTCACCTGCGCTCCTTCTCTGACCGCAGTCCAGAATT
 GAGCAGTAGCCGGGATCGTTACAACAGCGACAATGATCGATCTTCCCGTCTTCTTGGAAAAGCCCTCT
 CCAATCAGAGACAGACGAGGTAGTTTGGAGAAGAGCCAGGTGACAAGCGAGACCGTAAAAACTCTGCAT
 CAGCTGAACGAGATAGGAAGCACCGGACAACGCTCCACTGAGGGAAAAAGCCCTTGAAAAAAGAAGA
 CCGCTCTGATGGGAGTGCACCTAGCACCAGCACTGCTTCTCCAAGCTGAAGTCCCGTCCCAGAAACAG
 GATGGGGGGACAGCCCTGTGGCATCAGCCTCTCCAAAACCTGTGTTGGCCTGGCAGGGCATGCTTCTAC
 TGAAGAACAGCAACTTCTTCCAAATGCATCTGTTGCAGGGTACCTCCAAGTGGCTAGTAGTCTTCT
 TGTGGAGGTTCAACTGGAGGCAAAGTGGCCAGCTCAAGATCACTCAGCGTCTCCGTTTGGACCAGCCC
 AAGTTGGATGAAGTAACTCGACGCATCAAAGTAGCAGGGCCCAATGGTTATGCCATTCTTTTGGCTGTGC
 CTGGAAGTTCTGACAGCCGCTCCTCTTCTCAGCTGCATCAGACACTGCCACTTCTACTCAGAGGCC
 ACTTAGGAACCTTGTGTCTATTTAAAGCAAAGCAGGCAGCCGGGTGATCAGCCTCCCTGTGGGGGGC
 AACAAAGACAAGGAAAACACCGGGTCTTCATGCCTTCCACCTTGTGAGTTCTCCAGCAGTTCTCTGG
 ATTCCCTGCCAAGGCACTGGCCAAATCTGAAGAAGATTACCTGGTCATGATCATTGTCCGTGGGTTTGG
 TTTTCAGATAGGAGTTAGGTATGAGAACAAGAAGAGAGAAAACCTTGGCGCTGACCCTGTAA

ACGCGTACGCGGCCGCTCGAGCAGAAACTCATCTCAGAAGAGGATCTGGCAGCAAATGATATCCTGGATT
 ACAAGGATGACGACGATAAGGTTTAA

Protein Sequence: >RC214777 representing NM_022768
Red=Cloning site Green=Tags(s)

```
MRTAGRDPVPRRSRWRRAVPLCETSAGRRVTQLRGDDLRRPATMKGKERSPVKAKRSRGGEDSTRGER
SKKLGSGSGSNGSSSGKTDSGGGSRRSLHDKSSSRGGSREYDTGGGSSSRLHSYSSPSTKNSSGGGES
RSSSRGGGGSRSSSGAASAPGGGDGAETKTKI SELGSQLSDEAVEDGLFHEFKRFGDVSVKISHLSGS
GSGDERVAFVNFRRPEDARAAKHARGRLVLYDRPLKIEAVYVSRRRSRSPDKDTPPSASVVGASVGGH
RHPPGGGGQSRSLSPGGAALGYRDYRLQLALGRLLPPPPPPPLPRDLERERDYPFYERVRPAYSLEPRVG
AGAGAAPFREVD E I SPEDDQRANRTLFLGNLDITVTESDLRRAFDRFGVITEVDIKRPSRQGTSTYGFLK
FENLDMSHRAKLAMSGKIIIRNPIKIGYGKATPTTRLWVGGGLPWVPLAALAREFDRFGTIRTIDYRKG D
SWAYIQYESLDAHAHAWTHMRGFPLGGPDRRLRVDFADTEHRYQQYQLPLPLTHYELVDAFGHRAPDP
LRGARDRTPPLL YRDRDRDL YPDSDWVPPPPVRRERSTRATAATSVPAYEPLDSLDRRRDGSWLD RDRGDR
DLPSSRDQPRKRRLPEESGGRHLDRSPESDRPRKRHCAPSPDRSPELSSSRDRYNSDNDRSSRLLLERPS
PIRDRRGSLEKSQGDKRDRKNSASAERDRKHRTTAPTEGKSPLKKEDRSDGSAPSTSTASSKLSKSPSQKQ
DGGTAPVASASPKLCLAWQGM LLLKNSNFP SNMHLL QGDLQVASSLL VEGSTGGKVAQLKI TQRRLDQP
KLDEVTRRIKVAGPNGYAILLAVPGSSDSRSSSSSAASDTATSTQRPLRNLVSYLKQKQAAGVISL PVGG
NKDKENTGVLHAFPPCEFSQQFLDSPA KALAKSEEDYL VMIIVRGFGFQIGVRYENKKREN LAL TLL
```

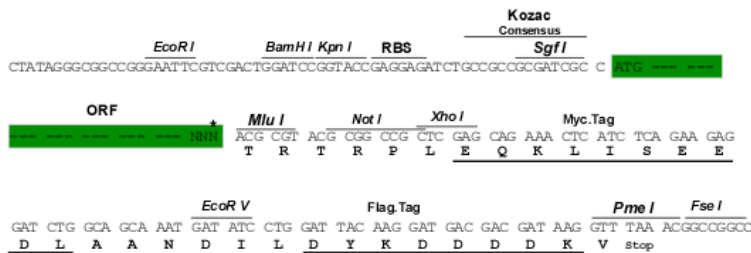
TRTRPLEQKLISEEDLAANDILDYKDDDDKV

Chromatograms: https://cdn.origene.com/chromatograms/mk8030_c12.zip

Restriction Sites: SgfI-MluI

Cloning Scheme:

Cloning sites used for ORF Shuttling:



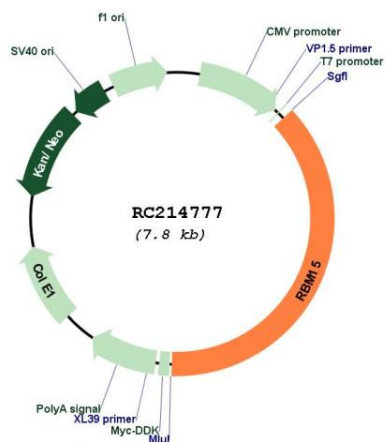
* The last codon before the Stop codon of the ORF

ACCN: NM_022768

ORF Size: 2931 bp

OTI Disclaimer:	The molecular sequence of this clone aligns with the gene accession number as a point of reference only. However, individual transcript sequences of the same gene can differ through naturally occurring variations (e.g. polymorphisms), each with its own valid existence. This clone is substantially in agreement with the reference, but a complete review of all prevailing variants is recommended prior to use. More info
OTI Annotation:	This clone was engineered to express the complete ORF with an expression tag. Expression varies depending on the nature of the gene.
Components:	The ORF clone is ion-exchange column purified and shipped in a 2D barcoded Matrix tube containing 10ug of transfection-ready, dried plasmid DNA (reconstitute with 100 ul of water).
Reconstitution Method:	<ol style="list-style-type: none">1. Centrifuge at 5,000xg for 5min.2. Carefully open the tube and add 100ul of sterile water to dissolve the DNA.3. Close the tube and incubate for 10 minutes at room temperature.4. Briefly vortex the tube and then do a quick spin (less than 5000xg) to concentrate the liquid at the bottom.5. Store the suspended plasmid at -20°C. The DNA is stable for at least one year from date of shipping when stored at -20°C.
RefSeq:	NM_022768.4 , NP_073605.4
RefSeq Size:	3450 bp
RefSeq ORF:	2934 bp
Locus ID:	64783
UniProt ID:	Q96T37
Cytogenetics:	1p13.3
Protein Families:	Transcription Factors
MW:	107 kDa
Gene Summary:	Members of the SPEN (Split-end) family of proteins, including RBM15, have repressor function in several signaling pathways and may bind to RNA through interaction with spliceosome components (Hiriart et al., 2005 [PubMed 16129689]).[supplied by OMIM, Feb 2009]

Product images:



Circular map for RC214777