

Product datasheet for RC214776

MYBPC1 (NM_206821) Human Tagged ORF Clone

Product data:

Product Type:	Expression Plasmids
Product Name:	MYBPC1 (NM_206821) Human Tagged ORF Clone
Tag:	Myc-DDK
Symbol:	MYBPC1
Synonyms:	LCCS4; MYBPCC; MYBPCS; MYOTREM; ssMyBP-C
Mammalian Cell Selection:	Neomycin
Vector:	pCMV6-Entry (PS100001)
E. coli Selection:	Kanamycin (25 ug/mL)
ORF Nucleotide Sequence:	>RC214776 ORF sequence Red=Cloning site Blue=ORF Green=Tags(s)

TTTTGTAATACGACTCACTATAGGGCGGCCGGAATTCGTCGACTGGATCCGGTACCGAGGAGATCTGCC
GCC**CGATCGCC**

ATGCCAGAACCCTAAGAAAGAGGAAAATGAAGTGCCAGCCCCAGCCCCACCCCGGAAGAACCAAGTA
AAGAGAAGGAGGCCGGAACCTACACCAGCAAAAGACTGGACCCCTTGTGAAACTCCTCTGGGAGGAACA
AGCCAAGCAGAAATGCCAACTCCCAGCTGCCATCTTGTTCATTGAAAAACCTCAAGGAGGAACAGTGAAA
GTTGGTGAAGATACACCTTCATAGCCAAAGTCAAGGCTGAAGATCTTCTGAGAAAACCCACTATCAAAAT
GGTTCAAAGGAAAATGGATGGACCTGGCCAGCAAAGCCGGAAGCACCTTCAGCTGAAGGAAACCTTTGA
GAGGCACAGTCGGGTGTACACATTTGAGATGCAGATCATCAAGGCCAAAGATAACTTTGCAGGAAATTAC
AGATGCGAGGTCACCTATAAGGATAAGTTTGACAGCTGTTCAATTTGATCTTGAAGTGCACGAATCTACTG
GGACTACTCCAACATTGACATCAGATCTGCTTTCAAGAGAAGTGGAGAAGGTCAAGAGGATGCAGGAGA
ACTTGACTTTAGTGGTCTCCTGAAACGTAGGGAGGTGAAGCAGCAGGAGGAAGAACCCAGGTGGACGTA
TGGGAGTTGCTGAAGAACGCGAAACCCAGTGAGTACGAGAAGATCGCCTTCCAGTATGGAATCACCGACC
TGCCGGCATGCTCAAGCGACTCAAGCGCATGCGCAGAGAGGAGAAGAAGAGCGCAGCTTTTGCAAAAAT
TCTTGATCCTGCATATCAGGTTGACAAAGGAGGAGAGTGAGGTTTGTGTGGAGCTGGCAGATCCAAG
TTGGAGGTGAAATGGTATAAAAATGGTCAAGAAATTCGACCCAGTACCAAATACATCTTTGAACACAAAG
GATGCCAGAGAATCCTGTTTATCAATAACTGTCAGATGACAGATGATTCAGAGTATTATGTGACAGCCGG
TGATGAGAAATGTTCCACTGAGCTCTTCGTAAGAGAGCCTCCAATTATGGTGACCAAACAGCTGGAAGAT
ACAACCTGCTTATTGTGGGAGAGAGTGGAAATTAGAATGTGAGGTGTCTGAAGATGATGCCAATGTA AAAAT
GGTTTAAGAAATGGTGAAGAGATTATCCCTGGTCCAAAATCAAGATACCGAATTAGAGTTGAGGGTAAAAA
ACACATCTTGATCATAGAGGGAGCAACAAAGGCTGATGCTGCAGAATATTCAGTAATGACAACAGGAGGA
CAATCATCTGCTAACTTAGTGTGACTTGAAACCTCTGAAGATTTTGACTCCTCTGACTGATCAGACTG
TAAATCTTGAAAAGAAATCTGCCTGAAGTGTGAAATCTCTGAAAACATACCAGGAAAATGGACTAAAAA
TGGCTACCTGTTCAAGGAGTAGCCGCTAAAGGTGGTTCACAAGGGAAGGATCCACAAGTTAGTGATA



[View online »](#)

GCCAATGCCCTCACTGAAGATGAAGGTGATTATGTATTTGCACCTGATGCCTACAATGTTACTCTGCCTG
CCAAAGTTCATGTTATTGATCCTCCTAAGATCATCCTGGATGGTCTTGATGCTGACAACACAGTGACAGT
GATTGCAGGAAACAAGCTTCGTCTTGAGATCCCCATCAGCGGAGAACCACCTCCTAAAGCCATGTGGAGC
CGGGGAGATAAGGCTATTATGGAAGGCAGTGGCCGGATAAGAACAGAATCTTACCCTGATAGCAGCACTC
TGGTCATTGATATAGCTGAAAGAGATGACTCTGGTGTTTACCACATCAATCTGAAAAACGAAGCTGGAGA
GGCACATGCAAGCATCAAGGTTAAAGTTGTGGACTTCCCTGATCCTCCAGTGGCACCAGCTCTCCAATCCTAGGAT
GTGGGAGATGACTGGTGTATCATGAACTGGGAGCCTCTGCCTACGACGGAGGCTCTCCAATCCTAGGAT
ATTTTATTGAGAGGAAGAAGAAACAAGCTCCAGGTGGATGAGGCTGAATTTTGATCTCTGCAAAGAAAC
AACTTTTGAAGCAAGAAGATGATTGAAGGTGTGGCCTATGAGGTCCGCATCTTTGCAGTCAATGCCATT
GGCATCTCCAAGCCAGTATGCCCTCCAGGCTTTTGTTCCTTTGGCTGTAACAAGCCCTCTACTCTTC
TGACTGTGGACTCTGTCACTGACACGACTGTCACGATGAGGTGGCGCCCCCAGACCACATTGGTGCAGC
AGGTTTAGATGGCTATGTGCTAGAGTATTGCTTTGAAGGAAGTGGAGTGGATAGTTGCAAACAAAGAT
CTGATTGACAAGACGAAGTTCACCATCACAGGTCTGCCAACAGATGCAAAGATCTTTGTGCGTGTGAAGG
CTGTTAATGCAGCTGGTCCAGCGAGCCCAAGTACTATTCTCAGCCATTCTCGTGAAGGAAATCATAGA
ACCTCAAAGATTTCGATTCCAAGACACCTGAAGCAAACCTATATCCGCAGAGTTGGAGAAGCTGTCAAT
CTGTTTATACCTTCCAGGGAAAACCAAGACCAGAATTAAGTGAAGAAGGATGGTGCAGAAATTGATA
AGAATCAATAAACATTCGCAACTCTGAGACTGATACAATCATATTTATTAGAAAAGCAGAGAGGAGCCA
CTCTGGGAAATATGATCTGCAAGTCAAAGTGGACAAATTCGTGGAGACCGCATCAATTGACATCCAGATC
ATTGACCGTCCAGGTCCACCCAAATTTGTGAAGATTGAGGATGTCTGGGGAGAAAATGTCGCTCTCATAT
GGACTCCACCAAGGATGATGGAATGCTGCTATCACAGGCTATACCATTGAGAAGGCTGACAAGAAGAG
CATGGAATGGTTTACTGTCTTGGAGCATTATCATCGAACCAGTCCACCATTACTGAATTGGTCTATAGGG
AATGAATATTACTCCGGTCTTTTCTGAAAACATGTGTGGCCTCAGTGGATGCCACCATGACTAAAG
AGAGTGCAGTGCAGCCAGGGATGGTAAAATCTACAAAAATCCAGTGTATGAAGACTTTGATTTCTCAGA
GGCACCCATGTTTACTCAGCCTTTGGTTAACACCTATGCCATAGCTGGTTACAATGCCACCTAAACTGC
AGTGTGAGAGGAAATCCTAAGCCTAAAATAACCTGGATGAAAAACAAAGTTGCTATTGTGGATGATCCAA
GATACAGGATGTTGAGCAACCAGGGAGTGTACCCTGGAAATTCGCAAGCCAGCCCTATGATGGAGG
CACTTACTGCTGCAAAGCAGTCAATGACCTTGGGACAGTGGAGATTGAATGCAAAGTGGAGGTGAAAGTC
ATTGCACAA

ACGCGTACGCGGCGCTCGAGCAGAACTCATCTCAGAAGAGGATCTGGCAGCAATGATATCCTGGATT
ACAAGGATGACGACGATAAGGTTTAA

Protein Sequence: >RC214776 protein sequence
Red=Cloning site Green=Tags(s)

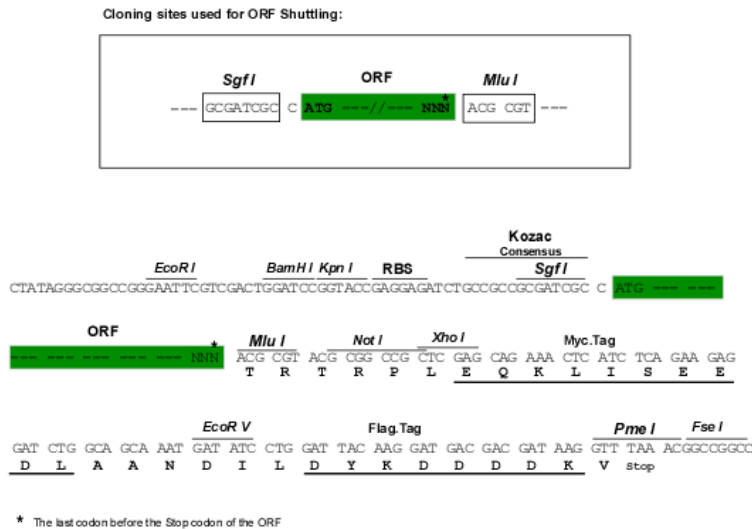
MPEPTKKEENEVPAPAPPPEEPSKEKEAGTTPAKDWTLVETPPGEEQAKQNANSQLSILFIEKPQGGTVK
 VGEDITFIKVKAE DLLRKPTIKWFKGKWM DLASKAGKHLQLKETFERHSRVYTFEMQIIKAKDNFAGNY
 RCEVTYKDKFDSCSFDELEVHESGTTPNIDIRSAFKRSGEGQEDAGELDFSGLLKRREVKQEEEPQVDV
 WELLKNAKPSEYEKIAFYQGITDLRGLMLKRLKMRREEKKSAAFAKILDPAYQVDKGGRRVRFVVELADPK
 LEVKWYKNGQEIRPSTKYIFEHKGQRILFINNCQMTDDSEYYVTAGDEKSTELFVREPPIMVTQLED
 TTAYCGERVELECEVSEDDANVKWFKNGEEIIPGPKSRYRIRVEGKKHILIEGATKADAAEYSVMTTGG
 QSSAKLSVDLPLKIL TPLTDQTVNLGKEICLKCEISENIPGKWTKNGLPVQESDRLKVVHKGRIHKLVI
 ANALTEDEGDYVFPDAYNVTLPAKVHVIDPPKIILDGLDADNTVTVIAGNKLRLIEPISGEPKKAMWS
 RGDKAIMEGSGRIRTESYDSSSTLVIDIAERDDSGVYHINLKNEAGEAHASIKVKVVDFFDPPVAPTUTE
 VGDDWCIMNWEPAYDGGSPILGYFIERKKKQSSRWMLNFDLCKETTFEPKMIEGVAYEVRIFAVNAI
 GISKSPMPSRPFVPLAVTSPPTLLTVDSVTDTTVMRWRPPDHIGAAGLDGYVLEYCFEGTEDWIVANKD
 LIDKTKFTITGLPTDAKIFVRVKAVNAAGASEPKYYSQPILVKEIEPPKIRIPRHLKQTYIRRVEAVN
 LVIPFQKPRPELTWKKDGAEIDKNQINIRNSETDTIIFIRKAERSHSGKYDLQVKVDFVETASIDIQI
 IDRPGPPQIVKIEDVWGENVALTWTPPKDDGNAAITGYTIQKADKKSMEWFTVIEHYHRTSATITELVIG
 NEYYFRVFSENMCGLSEDATMTKESAVIARDGKIYKNPVYEDFDFSEAPMFTQPLVNTYAIAGYNATLNC
 SVRGNPKPKITWMKNKVAIVDDPRYRMFSNQGVC TLEIRKPSPYDGGTYCCKAVNDLGTVEIECKLEVKV
 IAQ

TRTRPLEQKLISEEDLAANDILDYKDDDDKV

Chromatograms: https://cdn.origene.com/chromatograms/mk6600_d10.zip

Restriction Sites: SgfI-MluI

Cloning Scheme:

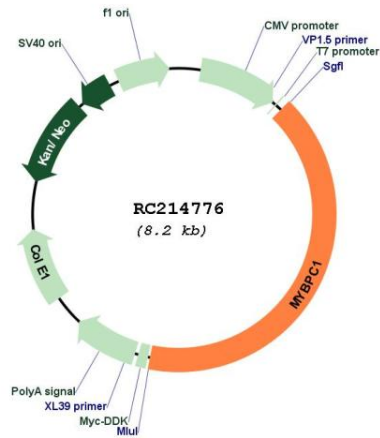


ACCN: NM_206821

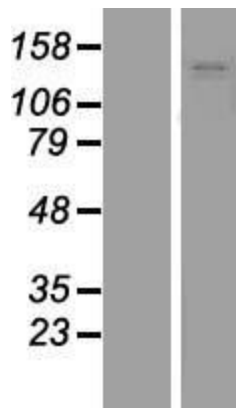
ORF Size: 3369 bp

OTI Disclaimer:	The molecular sequence of this clone aligns with the gene accession number as a point of reference only. However, individual transcript sequences of the same gene can differ through naturally occurring variations (e.g. polymorphisms), each with its own valid existence. This clone is substantially in agreement with the reference, but a complete review of all prevailing variants is recommended prior to use. More info
OTI Annotation:	This clone was engineered to express the complete ORF with an expression tag. Expression varies depending on the nature of the gene.
Components:	The ORF clone is ion-exchange column purified and shipped in a 2D barcoded Matrix tube containing 10ug of transfection-ready, dried plasmid DNA (reconstitute with 100 ul of water).
Reconstitution Method:	<ol style="list-style-type: none">1. Centrifuge at 5,000xg for 5min.2. Carefully open the tube and add 100ul of sterile water to dissolve the DNA.3. Close the tube and incubate for 10 minutes at room temperature.4. Briefly vortex the tube and then do a quick spin (less than 5000xg) to concentrate the liquid at the bottom.5. Store the suspended plasmid at -20°C. The DNA is stable for at least one year from date of shipping when stored at -20°C.
RefSeq:	NM_206821.2 , NP_996557.1
RefSeq Size:	3860 bp
RefSeq ORF:	3372 bp
Locus ID:	4604
UniProt ID:	Q00872
Cytogenetics:	12q23.2
MW:	126.5 kDa
Gene Summary:	This gene encodes a member of the myosin-binding protein C family. Myosin-binding protein C family members are myosin-associated proteins found in the cross-bridge-bearing zone (C region) of A bands in striated muscle. The encoded protein is the slow skeletal muscle isoform of myosin-binding protein C and plays an important role in muscle contraction by recruiting muscle-type creatine kinase to myosin filaments. Mutations in this gene are associated with distal arthrogyriposis type I. Alternatively spliced transcript variants encoding multiple isoforms have been observed for this gene. [provided by RefSeq, Dec 2011]

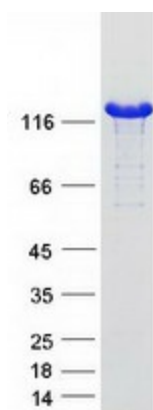
Product images:



Circular map for RC214776



Western blot validation of overexpression lysate (Cat# [LY404225]) using anti-DDK antibody (Cat# [TA50011-100]). Left: Cell lysates from untransfected HEK293T cells; Right: Cell lysates from HEK293T cells transfected with RC214776 using transfection reagent MegaTran 2.0 (Cat# [TT210002]).



Coomassie blue staining of purified MYBPC1 protein (Cat# [TP314776]). The protein was produced from HEK293T cells transfected with MYBPC1 cDNA clone (Cat# RC214776) using MegaTran 2.0 (Cat# [TT210002]).