

Product datasheet for **RC214767**

HTR3C (NM_130770) Human Tagged ORF Clone

Product data:

Product Type:	Expression Plasmids
Product Name:	HTR3C (NM_130770) Human Tagged ORF Clone
Tag:	Myc-DDK
Symbol:	HTR3C
Mammalian Cell Selection:	Neomycin
Vector:	pCMV6-Entry (PS100001)
E. coli Selection:	Kanamycin (25 ug/mL)



[View online »](#)

ORF Nucleotide Sequence:

>RC214767 ORF sequence
 Red=Cloning site Blue=ORF Green=Tags(s)

TTTTGTAATACGACTCACTATAGGGCGGCCGGAATTCGTCGACTGGATCCGGTACCGAGGAGATCTGCC
 GCC**GCGATCGCC**

ATGGAAGGAGGGTGGCCTGCAAGGCAGAGTGCCTCCTCTGCCTCACTGTCACTTCTCTGCTCAAGGAA
 GAGGCGACGCTTTTACCATCAATTGCTCAGGCTTTGACCAGCATGGGGTTGACCCTGCTGTCTTCCAAGC
 AGTGTGTTGACAGAAAGCCTTCCGTCCATTACCAACTACAGCATCCCTACCCGTGTCAACATCTCCTTC
 ACCCTGTCTGCCATCCTGGGAGTGGATGCACAGCTCCAGCTGCTGACATCATTCTGTGGATGGATTGG
 TATGGGACAATCCTTTTATTAAATTGGAACCCAAAAGAGTGTGTTGGCATCAATAAACTCACAGTATTAGC
 TGAAAACCTGTGGCTCCCAGACATCTTCATCGTGAATCCATGGATGTGGATCAGACGCCTTCCGGTCTC
 ACTGCCTATATCAGCAGTGAAGTGAATTAAGTATGATAAGCCAATGAGGGTGACCAGCATCTGTAACC
 TGGACATCTTCTACTTCCCTTTTGACCAACAGAAGTGTACCTTCCCTTCCAGTCTTCTCCTACACAGT
 GGACAGCATGCTGCTGGGCATGGACAAGGAGGTGTGGGAGATCACAGACAGCTCTCGAAAGTCATCCAA
 ACCCAGGGGGAGTGGGAGCTCTTGGGCATCAACAAGGCCACCCCAAAGATGTCCATGGGCAACAACCTAT
 ATGACCAGATCATGTTTTATGTGGCCATCAGGCGCAGGCCAAGCCTCTACATCATAAACCTGCTGGTGCC
 CAGTAGCTTTCTGGTTGCCATTGATGCCCTCAGCTTCTACCTGCCAGCAGAGAGCGAGAATCGTGCCCA
 TTCAAGATAAACTTCTGCTGGGCTACAACGTCTTCTGCTCATGATGAATGACTTGCTCCCTGCCAGTG
 GCACCCCTCATCAGTGTCTACTTCGCCCTGTGCCTGTCCCTGATGGTGGTCAAGCTGCTGGAGACCGT
 CTTTATTACCTACCTGCTGCACGTGGCCACCACCCAGCCCCACCCATGCCTAGGTGGCTTCACTCCCTG
 CTGCTCCACTGCACCAGCCAGGGAGATGCTGTCCACTGCGCCCCAGAAGGAAATAAGGGCCTGGGTC
 TCACCTCACCCACCTGCCTGGCCAAAAGGAGCCGGGGGAGTTAGCAGGGAAGAAGCTGGGACCCAGAGA
 GACCGAGCCAGATGGGGCTCAGGATGGACAAGACCCAGCTAATGGAGCTGTGGGTGCAGTTCAGCCAC
 GCGATGGACACCTGCTCTTCCGCTCTACCTGCTCTTTCATGGCCTCCTCCATCCTTACTGTCATTGTCC
 TCTGGAACACC

ACGCGTACGCGGCCGCTCGAGCAGAACTCATCTCAGAAGAGGATCTGGCAGCAATGATATCCTGGATT
 ACAAGGATGACGACGATAAGGTTTAA

Protein Sequence:

>RC214767 protein sequence
 Red=Cloning site Green=Tags(s)

MEGGWPARQSALLCLTVSLLLQGRGDAFTINCSGFDQHGVDPAVFAQVFDKAFRPFNTNYSIPTRVNI
 TLSAILGVDAQLQLLSFLWMDLVWDNPFINWNPKECVGINKLTVLAENLWLPDIFIVESMDVDQTPSGL
 TAYISSEGRIKYDKPMRVTSICNLDFYFPDQDNCTFFSSFLYTVDSMLLGMDKEVWEITDTSRKVIQ
 TQGEWELLGINKATPKMSMGNNLYDQIMFYVAIRRRPSLYIINLLVPSSFLVAIDALSFYLP
 AESENRAPFKITLLLGYNVFLMMNDLLPASGTPLISVYFALCLSLMVVSLETVFITYLLHVATTQPP
 PMPRWLHSLLLHCTSPGRCCPTAPQGNKGLGLTLTHLPGPKPEGELAGKLGPRETEPDGGSGWTKTQ
 LMELWVQFSHAMDTLLFRLYLLFMASILLTVIVLWNT

TRTRPLEQKLISEEDLAANDILDYKDDDDKV

Chromatograms:

https://cdn.origene.com/chromatograms/mk6440_c01.zip

Restriction Sites:

SgfI-MluI

Cloning Scheme:


ACCN: NM_130770

ORF Size: 1341 bp

OTI Disclaimer: The molecular sequence of this clone aligns with the gene accession number as a point of reference only. However, individual transcript sequences of the same gene can differ through naturally occurring variations (e.g. polymorphisms), each with its own valid existence. This clone is substantially in agreement with the reference, but a complete review of all prevailing variants is recommended prior to use. [More info](#)

OTI Annotation: This clone was engineered to express the complete ORF with an expression tag. Expression varies depending on the nature of the gene.

Components: The ORF clone is ion-exchange column purified and shipped in a 2D barcoded Matrix tube containing 10ug of transfection-ready, dried plasmid DNA (reconstitute with 100 ul of water).

- Reconstitution Method:**
1. Centrifuge at 5,000xg for 5min.
 2. Carefully open the tube and add 100ul of sterile water to dissolve the DNA.
 3. Close the tube and incubate for 10 minutes at room temperature.
 4. Briefly vortex the tube and then do a quick spin (less than 5000xg) to concentrate the liquid at the bottom.
 5. Store the suspended plasmid at -20°C. The DNA is stable for at least one year from date of shipping when stored at -20°C.

RefSeq: [NM_130770.3](#)

RefSeq Size: 1745 bp

RefSeq ORF: 1344 bp

Locus ID: 170572

UniProt ID: [Q8WXA8](#)

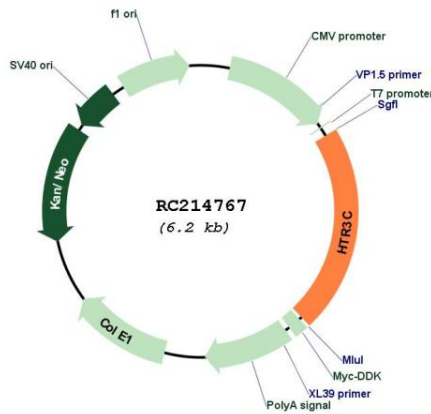
Cytogenetics: 3q27.1

Protein Families: Druggable Genome, Ion Channels: Cys-loop Receptors, Transmembrane

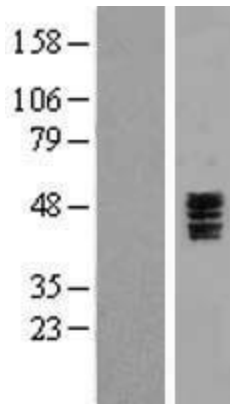
MW: 50.2 kDa

Gene Summary: The product of this gene belongs to the ligand-gated ion channel receptor superfamily. This gene encodes subunit C of the type 3 receptor for 5-hydroxytryptamine (serotonin), a biogenic hormone that functions as a neurotransmitter, a hormone, and a mitogen. This receptor causes fast, depolarizing responses in neurons after activation. Genes encoding subunits C, D and E form a cluster on chromosome 3. [provided by RefSeq, Jul 2008]

Product images:



Circular map for RC214767



Western blot validation of overexpression lysate (Cat# [LY408933]) using anti-DDK antibody (Cat# [TA50011-100]). Left: Cell lysates from untransfected HEK293T cells; Right: Cell lysates from HEK293T cells transfected with RC214767 using transfection reagent MegaTran 2.0 (Cat# [TT210002]).