

Product datasheet for **RC214764**

TBL1Y (NM_134258) Human Tagged ORF Clone

Product data:

Product Type:	Expression Plasmids
Product Name:	TBL1Y (NM_134258) Human Tagged ORF Clone
Tag:	Myc-DDK
Symbol:	TBL1Y
Synonyms:	DFNY2; TBL1
Mammalian Cell Selection:	Neomycin
Vector:	pCMV6-Entry (PS100001)
E. coli Selection:	Kanamycin (25 ug/mL)



[View online »](#)

ORF Nucleotide
Sequence:

>RC214764 ORF sequence
Red=Cloning site Blue=ORF Green=Tags(s)

TTTTGTAATACGACTCACTATAGGGCGGCCGGAATTCGTCGACTGGATCCGGTACCGAGGAGATCTGCC
GCCGCGATCGCC

ATGAGCATAACCACTGACGAGGTGAACCTTCTGGTTTATCGGTATCTCCAGGAGTCAGGTTTTCTCACT
CGGCTTTACGTTTGGGATCGAGAGCCACATCAGCCAGTCCAACATCAATGGGACTAGTGCCACCGTC
TGCCCTCATCTCCATTCTCCAGAAGGGACTGCAGTATGTAGAGGCTGAGATAAGCATCAACAAGGATGGC
ACAGTGTTCGACAGCCGCCCTATAGAGTCCCTGTCCCTGATAGTTGCTGTGATTCTGATGTGGTGCAGA
TGCGGCAGCAGGCATTTGGAGAGAAGCTCACTCAGCAGCAAGCCAGTGCAGCAGCCACAGAGGCATCAGC
AATGGCAAAGGCGCAACCATGACCCAGCTGCTATTTCCAGCAAAAATCCTCCAAGAACCAGAGAGGCC
ACAGTGAACGGGAAGAGAATGGAGCACATGAAATCAATAATCACTCAAAGCCAATGAAATAGATGGGG
ATGTTGAGATCCACCAACAAAGCCACAGTCTTCGGGGCCACGAGTCTGAGGTGTTTCATTTGTCCCTG
GAACCCTGTCAGTATTTGCTAGCCTCTGGATCTGGAGACTCAACTGCAAGGATATGGAACCTGAATGAG
AATAGCAACGGGGCTCCACCCAGCTCGTGTGAGACATTGTATACGAGAAGGGGGCACGACGTCCTCAA
GTAATAAAGATGTCACCTCACTGGACTGGAACAGTGTGGAACACTATTGGCTATGGGTTTATATGATGG
TTTCGCAAGAATATGGACAGAAAATGGTAACCTGGCCAGCACCTTAGGCCAACATAAAGGCCCATCTTC
GCTCTGAAATGGAACAAAAGGGGAATTATGTTTTGAGTGTGGTGTAGACAAAACAATAATTTGGG
ATGCTCACACAGGAGAAGCCAAACAGCAGTTTCCTTTTTCATTAGCCCCCGCCCTTGATGTGGACTGGCA
GAACAACATGACCTTTGCCTCCTGTAGCACAGACATGTGTATCCATGTGTGCAGGCTCGGCTGTGACCAC
CCAGTCAAAACCTTCCAGGGACACAAACGAGGTCAATGCCATCAAATGGGATCCTTCTGGAATGTTGC
TGCGCTCTGCTCGGATGACATGACATTGAAGATCTGGAGTATGAAGCAGGATGCATGCCATCCAGTCT
TCAGGCTCACAGCAAGAGATCTACACCATCAAGTGGAGCCCCACCGGGCCTGCCACCAGCAACCCAAAC
TCCAGCATCATGTTGGCAAGTGCTTCATTTGATTCTACAGTGCAGTGTGGGATGTGGAGCAAGGTGCT
GCACCCACACACTCATGAAGCATCAAGAGCCTGTCTACAGTGTAGCTTTAGCCCCGATGGAAGTACTT
GGCTAGTGGATCCTTTGACAAGTATGTTTATCTGGAATACTCAGAGTGGAAAGTCTCGTCCACAGCTAC
CAAGGCACTGGCGGTATCTTCGAGGTGTCTGGAACGCCCGAGGAGATAAAGTGGGCGCCAGCGCTCTG
ATGGCTCTGTGTGTTCTGGATCTG

ACGCGTACGCGGCCGCTCGAGCAGAACTCATCTCAGAAGAGGATCTGGCAGCAAATGATATCTGGATT
ACAAGGATGACGACGATAAGGTTTAA

Protein Sequence:

>RC214764 protein sequence
Red=Cloning site Green=Tags(s)

MSITSDEVNFLVYRYLQESGFSHAFTFGIESHISQSNINGTLVPPSALISILQKGLQYVEAEISINKDG
TVFDSRPIESLSLIVAVIPDVVQMRQQAFGEKLTQQQASAAATEASAMAKAATMPAAISQNPKNREA
TVNGEENGAHEINNHSKPMIDGDVEIPPNKATVLRGHESEVFCAWNVPVDLLASGSGDSTARIWNLNE
NSNGGSTQLVLRHCIREGGHDVPSNKDVTSLDWNDSGTLAMGSYDGFARIWTENGLASTLQHKGPFI
ALKWNNKGNVLSAGVDKTTIIWDAHTGEAKQQFPFHSAPALDWDWQNNMTFASCSTDMCIHVCRLGCDH
PVKTFQGHTNEVNAIKWDPSGMLLASCSDDMTLKIWSMKQDACVHDLQAHSKEIYTIKWSPTGPATSNPN
SSIMLASASFDSTVRLWDVEQGVCTHTLMKHQEPVYSVAFSPDGKYLASGSFDKYVHIWNTQSGSLVHSY
QGTGGIFEVCWNARGDKVGASASDGSVCVLDL

TRTRPLEQKLISEEDLAANDILDYKDDDDKV

Chromatograms:

https://cdn.origene.com/chromatograms/mk6606_d08.zip

Restriction Sites:

SgfI-MluI

Cloning Scheme:



ACCN: NM_134258

ORF Size: 1566 bp

OTI Disclaimer: The molecular sequence of this clone aligns with the gene accession number as a point of reference only. However, individual transcript sequences of the same gene can differ through naturally occurring variations (e.g. polymorphisms), each with its own valid existence. This clone is substantially in agreement with the reference, but a complete review of all prevailing variants is recommended prior to use. [More info](#)

OTI Annotation: This clone was engineered to express the complete ORF with an expression tag. Expression varies depending on the nature of the gene.

Components: The ORF clone is ion-exchange column purified and shipped in a 2D barcoded Matrix tube containing 10ug of transfection-ready, dried plasmid DNA (reconstitute with 100 ul of water).

- Reconstitution Method:
1. Centrifuge at 5,000xg for 5min.
 2. Carefully open the tube and add 100ul of sterile water to dissolve the DNA.
 3. Close the tube and incubate for 10 minutes at room temperature.
 4. Briefly vortex the tube and then do a quick spin (less than 5000xg) to concentrate the liquid at the bottom.
 5. Store the suspended plasmid at -20°C. The DNA is stable for at least one year from date of shipping when stored at -20°C.

RefSeq: [NM_134258.1](#), [NP_599020.1](#)

RefSeq Size: 2376 bp

RefSeq ORF: 1569 bp

Locus ID: 90665

UniProt ID: [Q9BQ87](#)

Cytogenetics: Yp11.2

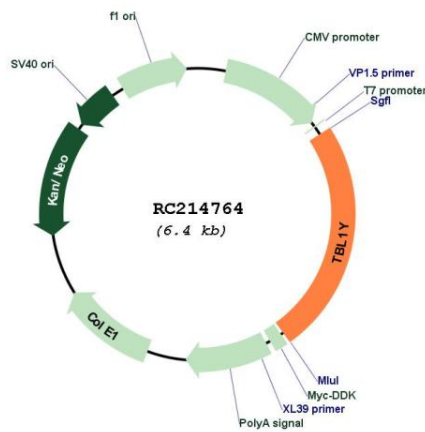
Protein Families: Transcription Factors

Protein Pathways: Wnt signaling pathway

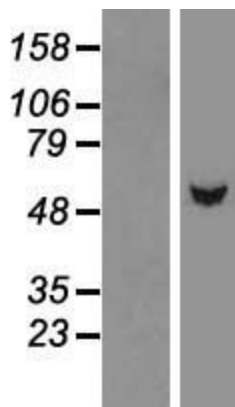
MW: 56.7 kDa

Gene Summary: The protein encoded by this gene has sequence similarity with members of the WD40 repeat-containing protein family. The WD40 group is a large family of proteins, which appear to have a regulatory function. It is believed that the WD40 repeats mediate protein-protein interactions and members of the family are involved in signal transduction, RNA processing, gene regulation, vesicular trafficking, cytoskeletal assembly and may play a role in the control of cytotypic differentiation. This gene is highly similar to TBL1X gene in nucleotide sequence and protein sequence, but the TBL1X gene is located on chromosome X and this gene is on chromosome Y. This gene has three alternatively spliced transcript variants encoding the same protein. [provided by RefSeq, Jul 2008]

Product images:



Circular map for RC214764



Western blot validation of overexpression lysate (Cat# [LY409606]) using anti-DDK antibody (Cat# [TA50011-100]). Left: Cell lysates from untransfected HEK293T cells; Right: Cell lysates from HEK293T cells transfected with [RC220139] using transfection reagent MegaTran 2.0 (Cat# [TT210002]).



Coomassie blue staining of purified TBL1Y protein (Cat# [TP314764]). The protein was produced from HEK293T cells transfected with TBL1Y cDNA clone (Cat# RC214764) using MegaTran 2.0 (Cat# [TT210002]).