

Product datasheet for **RC214758**

MRG15 (MORF4L1) (NM_206839) Human Tagged ORF Clone

Product data:

Product Type:	Expression Plasmids
Product Name:	MRG15 (MORF4L1) (NM_206839) Human Tagged ORF Clone
Tag:	Myc-DDK
Symbol:	MRG15
Synonyms:	Eaf3; FWP006; HsT17725; MEAF3; MORFRG15; MRG15; S863-6
Mammalian Cell Selection:	Neomycin
Vector:	pCMV6-Entry (PS100001)
E. coli Selection:	Kanamycin (25 ug/mL)
ORF Nucleotide Sequence:	>RC214758 representing NM_206839 Red=Cloning site Blue=ORF Green=Tags(s)

TTTTGTAATACGACTCACTATAGGGCGGCCGGAATTCGTCGACTGGATCCGGTACCGAGGAGATCTGCC
GCC**CGATCGCC**

ATGGCGCCGAAGCAGGACCCGAAGCCTAAATCCAGGAGGGTGAGCGAGTGCTGTGCTTTCATGGGCCTC
TTCTTTATGAAGCAAAGTGTGTAAGGTTGCCATAAAGGACAAACAAGTAAATACTTCATACATTACAG
TGTTTGAATAAAAAAGTGTGTGAGGCCAGGCGCTCTGAAAAATCTTTGAAGACACATGAGGATATT
GTAGCCCTTTTCTGTTCCTGAAGGAGCTCCCTCAGTACACCACCCCTCTGACCTCTAGTTGGGATG
AATGGGTTCCGGAGAGCAGAGTACTCAAATACGTGGACACCAATTTGCAGAAACGCGAGAATTCAAAA
AGCCAATCAGGAGCAGTATGCAGAGGGGAAGATGAGAGGGGCTGCCCCAGGAAAGAAGACATCTGGTCTG
CAACAGAAAAATGTTGAAGTAAAAACGAAAAAGAACAAACAGAAAAACCTGGAAATGGAGATGGTGCA
GTACCAGTGAACAGAGTTGAAGTTAAAGTAAAGATTCTGAAGAGCTAAACCGTGGCTTGTGATGAC
TGGGACTTAATTACCAGGCAAAAACAGCTCTTTTATCTTCTGCCAAGAAGAATGTGGATTCCATTCTTG
AGGATTATGCAAATTACAAGAAATCTCGTGAAACACAGATAATAAGGAGTATGCGGTTAATGAAGTTGT
GGCAGGGATAAAAAGAATACTTCAACGTAATGTTGGGTACCCAGCTACTCTATAAAATTTGAGAGACCACAG
TATGCTGAAATCTTGCAGATCATCCCGATGCACCCATGTCCAGGTGTATGGAGGCCACATCTCCTGA
GATTATTTGTACGAATTGGAGCAATGTTGGCTTATACACCTCTGGATGAGAAGAGCCTTGCTTTATTACT
CAATTATCTTACGATTTCTAAAGTACCTGGCAAAGAATTCTGCAACTTTGTTCACTGCGCAGGATTAT
GAAGTGGCTCCTCTGAGTACCATCGAAAGCTGTG

ACGCGTACGCGGCCGCTCGAGCAGAACTCATCTCAGAAGAGGATCTGGCAGCAAATGATATCCTGGATT
ACAAGGATGACGACGATAAGGTTTAA



[View online »](#)

Protein Sequence: >RC214758 representing NM_206839
Red=Cloning site Green=Tags(s)

MAPKQDPKPKFQEGERVLCFHGPLL YEAKCVKVAIKDKQVKYFIHYSWGNKKS AVRPRRSEKSLKTHEDI
 VALFPVPEGAPSVHHPLLTSSWDEWVPE SRVLKYVDNLQKQRELQKANQE QYAEGKMRGAAPGKKTSGL
 QQKNVEVKTKKNKQKTPGNGDGGSTSETPQPPRKRARVDPTVENEETF MNRVEVKVKIPEELKPLVDD
 WDLITRQKQLFYLP AKKNVDSILEDYANYKKS RGN TDNKEYAVNEVVAGIKEYFNVM LGTQLLYKFERPQ
 YAEILADHPDAPMSQVYGAPHLRL FVRIGAMLAYTPLDEKSLALLLN YLHDFLKYLAKNSATLFSASDY
 EVAPPEYHRKAV

TRTRPLEQKLISEEDLAANDILDYKDDDDKVK

Chromatograms: https://cdn.origene.com/chromatograms/mk8054_h01.zip

Restriction Sites: SgfI-MluI

Cloning Scheme:



ACCN: NM_206839

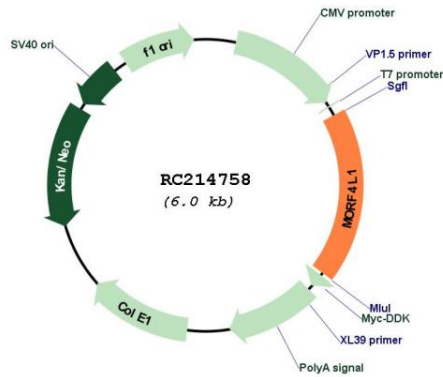
ORF Size: 1086 bp

OTI Disclaimer: Due to the inherent nature of this plasmid, standard methods to replicate additional amounts of DNA in E. coli are highly likely to result in mutations and/or rearrangements. Therefore, OriGene does not guarantee the capability to replicate this plasmid DNA. Additional amounts of DNA can be purchased from OriGene with batch-specific, full-sequence verification at a reduced cost. Please contact our customer care team at custsupport@origene.com or by calling 301.340.3188 option 3 for pricing and delivery.

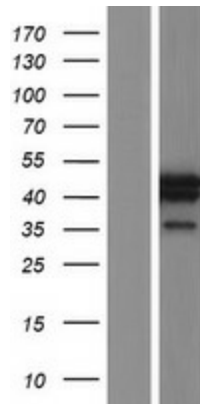
The molecular sequence of this clone aligns with the gene accession number as a point of reference only. However, individual transcript sequences of the same gene can differ through naturally occurring variations (e.g. polymorphisms), each with its own valid existence. This clone is substantially in agreement with the reference, but a complete review of all prevailing variants is recommended prior to use. [More info](#)

OTI Annotation:	This clone was engineered to express the complete ORF with an expression tag. Expression varies depending on the nature of the gene.
Components:	The ORF clone is ion-exchange column purified and shipped in a 2D barcoded Matrix tube containing 10ug of transfection-ready, dried plasmid DNA (reconstitute with 100 ul of water).
Reconstitution Method:	<ol style="list-style-type: none">1. Centrifuge at 5,000xg for 5min.2. Carefully open the tube and add 100ul of sterile water to dissolve the DNA.3. Close the tube and incubate for 10 minutes at room temperature.4. Briefly vortex the tube and then do a quick spin (less than 5000xg) to concentrate the liquid at the bottom.5. Store the suspended plasmid at -20°C. The DNA is stable for at least one year from date of shipping when stored at -20°C.
RefSeq:	NM_206839.2
RefSeq Size:	1969 bp
RefSeq ORF:	1089 bp
Locus ID:	10933
UniProt ID:	Q9UBU8
Cytogenetics:	15q25.1
Protein Families:	Transcription Factors
MW:	41.3 kDa
Gene Summary:	Component of the NuA4 histone acetyltransferase (HAT) complex which is involved in transcriptional activation of select genes principally by acetylation of nucleosomal histones H4 and H2A. This modification may both alter nucleosome - DNA interactions and promote interaction of the modified histones with other proteins which positively regulate transcription. This complex may be required for the activation of transcriptional programs associated with oncogene and proto-oncogene mediated growth induction, tumor suppressor mediated growth arrest and replicative senescence, apoptosis, and DNA repair. The NuA4 complex ATPase and helicase activities seem to be, at least in part, contributed by the association of RUVBL1 and RUVBL2 with EP400. NuA4 may also play a direct role in DNA repair when directly recruited to sites of DNA damage. Also component of the mSin3A complex which acts to repress transcription by deacetylation of nucleosomal histones. Required for homologous recombination repair (HRR) and resistance to mitomycin C (MMC). Involved in the localization of PALB2, BRCA2 and RAD51, but not BRCA1, to DNA-damage foci. [UniProtKB/Swiss-Prot Function]

Product images:



Circular map for RC214758



Western blot validation of overexpression lysate (Cat# [LY404237]) using anti-DDK antibody (Cat# [TA50011-100]). Left: Cell lysates from untransfected HEK293T cells; Right: Cell lysates from HEK293T cells transfected with RC214758 using transfection reagent MegaTran 2.0 (Cat# [TT210002]).