

Product datasheet for RC214757

GHRHR (NM_001009824) Human Tagged ORF Clone

Product data:

Product Type:	Expression Plasmids
Product Name:	GHRHR (NM_001009824) Human Tagged ORF Clone
Tag:	Myc-DDK
Symbol:	GHRHR
Synonyms:	GHRFR; GHRHRpsv; GRFR; IGHD1B
Mammalian Cell Selection:	Neomycin
Vector:	pCMV6-Entry (PS100001)
E. coli Selection:	Kanamycin (25 ug/mL)
ORF Nucleotide Sequence:	>RC214757 representing NM_001009824 Red=Cloning site Blue=ORF Green=Tags(s)

TTTTGTAATACGACTCACTATAGGGCGGCCGGAATTCGTCGACTGGATCCGGTACCGAGGAGATCTGCC
GCC**CGATCGCC**

ATGGACCGCCGGATGTGGGGGGCCACGTCTTCTGCGTGTGAGCCGTTACCGACCGTATTGGGCCACA
TGCACCCAGAATGTGACTTCATCACCCAGCTGAGAGAGGATGAGAGTGCCTGTCTACAAGCAGCAGAGGA
GATGCCAACACCACCCTGGGCTGCCCTGCGACCTGGGATGGGCTGCTGTGCTGGCCACGGCAGGCTCT
GGCGAGTGGTCAACCCTCCCCTGCCGGATTTCTTCTCACTTCAGCTCAGAGTCAGGGGCTGTGAAAC
GGGATTGTACTATCACTGGCTGGTCTGAGCCCTTCCACCTTACCCTGTGGCCTGCCCTGTGCCTCTGGA
GCTGCTGGCTGAGGAGGAATCTTACTTCTCCACAGTGAAGATTATCTACACCGTGGGCCATAGCATCTCT
ATTGTAGCCCTCTTCGTGGCCATCACCATCCTGTTGCTCTCAGGAGGCTCCACTGCCCCCGGAACCTACG
TCCACACCCAGCTGTTCACTTTTATCCTCAAGGCGGGAGCTGTGTTCTGAAGGATGCTGCCCTTTT
CCACAGCGACGACTGACCACTGCAGCTTCTCCACTGTTCTATGCAAGGTCTCTGTGGCCGCTCCCAT
TTCGCCACCATGACCAACTTCAGCTGGCTGTTGGCAGAAGCCGTACCTGAAGTGCCTCCTGGCCTCCA
CCTCCCCAGCTCAAGGAGAGCCTTCTGGTGGCTGGTTCGCTGGTGGGGGCTGCCGTGCTCTTAC
TGGCACGTGGGTGAGCTGCAAAGTGGCCTTCGAGGACATCGCGTGGTGGGACCTGGACGACACCTCCCC
TACTGGTGGATCATCAAAGGGCCATTGCTCCTCGGTGGGTGAACTTGGGCTTTTCTCAATATTA
TCCGCATCCTGGTGGGAACTGGAGCCAGCTCAGGGCAGCCTCCATACCCAGTCTCAGTATTGGTACTG
TGTGTTGTGCTGGGATACTGGGAAAGGG

ACGCGTACGCGGCCGCTCGAGCAGAACTCATCTCAGAAGAGGATCTGGCAGCAAATGATATCCTGGATT
ACAAGGATGACGACGATAAGGTTTAA



[View online »](#)

Protein Sequence: >RC214757 representing NM_001009824
Red=Cloning site Green=Tags(s)

MDRRMWGAHVFCVLSPLPTVLGHMPECDFITQLREDESACLQAAEEMPNTTLGCPATWDGLLCWPTAGS
 GEWVTLPCPDDFFSHFSSESGAVKRDCTITGWSEPFPPYPVACPVLELLAEESYFSTVKIITYTVGHSIS
 IVALFVAITILVALRRLHCPRNYVHTQLFTTFILKAGAVFLKDAALFHSDTDHCSFSTVLCKVSAASH
 FATMTNFSWLLAEAVYLNCLLASTSPSSRRAFWWLVLAGWGLPVLFTGTWVWVSKLAFEDIACWDLDDTSP
 YWWIIGPIVLSVGVNFGFLNIIRILVRKLEPAQGLHTQSQYWYCVFVSGDTGKG

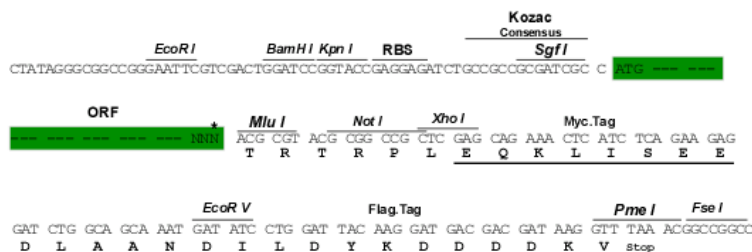
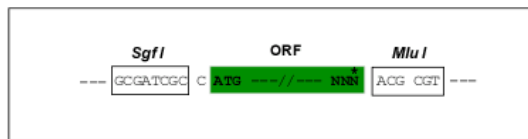
TRTRPLEQKLISEEDLAANDILDYKDDDDKV

Chromatograms: https://cdn.origene.com/chromatograms/mk8053_b05.zip

Restriction Sites: SgfI-MluI

Cloning Scheme:

Cloning sites used for ORF Shuttling:



* The last codon before the Stop codon of the ORF

ACCN: NM_001009824

ORF Size: 1011 bp

OTI Disclaimer: The molecular sequence of this clone aligns with the gene accession number as a point of reference only. However, individual transcript sequences of the same gene can differ through naturally occurring variations (e.g. polymorphisms), each with its own valid existence. This clone is substantially in agreement with the reference, but a complete review of all prevailing variants is recommended prior to use. [More info](#)

OTI Annotation: This clone was engineered to express the complete ORF with an expression tag. Expression varies depending on the nature of the gene.

Components: The ORF clone is ion-exchange column purified and shipped in a 2D barcoded Matrix tube containing 10ug of transfection-ready, dried plasmid DNA (reconstitute with 100 ul of water).

Reconstitution Method:

1. Centrifuge at 5,000xg for 5min.
2. Carefully open the tube and add 100ul of sterile water to dissolve the DNA.
3. Close the tube and incubate for 10 minutes at room temperature.
4. Briefly vortex the tube and then do a quick spin (less than 5000xg) to concentrate the liquid at the bottom.
5. Store the suspended plasmid at -20°C. The DNA is stable for at least one year from date of shipping when stored at -20°C.

RefSeq: [NM_001009824.1](#), [NP_001009824.1](#)

RefSeq Size: 1130 bp

RefSeq ORF: 1013 bp

Locus ID: 2692

Cytogenetics: 7p14.3

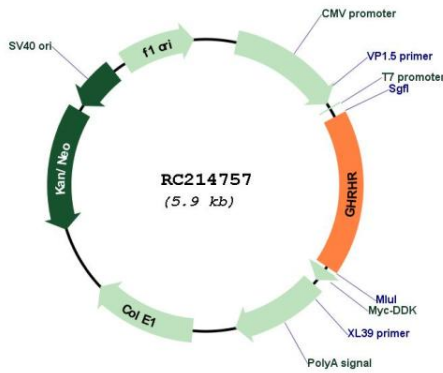
Protein Families: Druggable Genome, GPCR, Transmembrane

Protein Pathways: Neuroactive ligand-receptor interaction

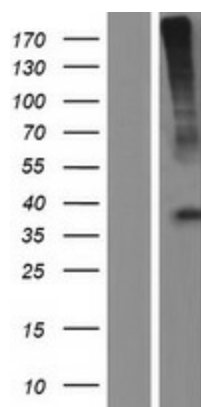
MW: 37.3 kDa

Gene Summary: This gene encodes a receptor for growth hormone-releasing hormone. Binding of this hormone to the receptor leads to synthesis and release of growth hormone. Mutations in this gene have been associated with isolated growth hormone deficiency (IGHD), also known as Dwarfism of Sindh, a disorder characterized by short stature. [provided by RefSeq, Jun 2010]

Product images:



Circular map for RC214757



Western blot validation of overexpression lysate (Cat# [LY423140]) using anti-DDK antibody (Cat# [TA50011-100]). Left: Cell lysates from untransfected HEK293T cells; Right: Cell lysates from HEK293T cells transfected with RC214757 using transfection reagent MegaTran 2.0 (Cat# [TT210002]).