

Product datasheet for **RC214746**

ABLIM2 (NM_032432) Human Tagged ORF Clone

Product data:

Product Type:	Expression Plasmids
Product Name:	ABLIM2 (NM_032432) Human Tagged ORF Clone
Tag:	Myc-DDK
Symbol:	ABLIM2
Mammalian Cell Selection:	Neomycin
Vector:	pCMV6-Entry (PS100001)
E. coli Selection:	Kanamycin (25 ug/mL)



[View online »](#)

ORF Nucleotide Sequence:

>RC214746 representing NM_032432
 Red=Cloning site Blue=ORF Green=Tags(s)

TTTTGTAATACGACTCACTATAGGGCGGCCGGAATTCGTCGACTGGATCCGGTACCGAGGAGATCTGCC
 GCC**CGCATCGCC**

ATGAGTGCAGTGTGCGAGCCCCAGGCTGCTCCAGCCCCGCTGGAGAAGTCGCCAGCACGGCGATCCTGT
 GCAACACGTGTGGGAATGTGTGCAAGGGCGAGGTGCTGCGGGTGCAGGACAAGTACTTCCACATCAAGTG
 CTTCTGTGTAAGCATGTGGCTGCGACCTGGCCGAGGGCGGCTTCTTCGTGCGGAGGGCGAGTACATC
 TGCACGCTGGACTACCAGAGGCTCTACGGCACCCGCTGCTTCAGCTGCGACCAGTTCATTGAGGGTGAGG
 TGGTGTGCGGCGTGGCAAGACCTACCACCCGACTGCTTCGTGTGTGCCGTCTGCCGGTGCCTTCCC
 CCCCAGGGACCGAGTGACCTTCAACGGGAAGGAATGCATGTGCCAGAAGTGTTCCTGCCGTATCGGTG
 GGCAGCAGCGCACCTGTCCAGGGCCTCCGAAGTTGTGGGGTCTGCGGCACAGAAATCAAGAATGGCC
 AGGCCCTGGTAGCCTTGGACAAGCACTGGCACTGGGCTGTTTTAAGTGAAGAGCTGTGGGAAGCTCCT
 GAATGCCGAGTACATCAGCAAGGATGGGCTGCCCTACTGCGAAGCTGACTATCACGCCAAGTTCGGCATC
 CGCTGTGACAGCTGTGAGAAATACATCACGGGGCGCGTGTGGAGCCGGAGAGAAGCACTACCACCTT
 CCTGCGCGCTATGTGTCAGGTGCGGCCAGATGTTTGCAGAAGGCCAAGAGATGTATCTTCAAGTTCCCTC
 CATCTGGCATCCGGCGTGTGCAACAAGCAGCCAGAACTGAAGACAGAAACAAGGAAACCAGAACTTCTCTCA
 GAGAGCATCATTCTGTCCCTGCTTCCAGCACCTCAGGGTCTCCGAGCCGTGTGATTTATGCCAAGCTTG
 GTGGTGAGATCCTGGACTACAGGGACTTGGCAGCCCTTCTAAAAGTAAAGCCATCTATGACATCGACCCG
 CCCCAGACATGATCTCTACTCACCTACATCAGCCACTCTGCAGGGGACAGGCAGAGCTACGGCGAGGGG
 GATCAGGATGACCGTCTACAAGCAGTGTGCGACCTCCAGCCAAAGCTCCACTGGTTCGTTAGCCTCG
 GCGCTACACTCCGACCTCACGGTACCCACAGCACTACAGCCGTCAGCTGCCAGGCGATCGGATCGGGA
 GGATGGAAGCTTGGACCAGGATAACAGGAAGCAGAAGAGCAGCTGGCTGATGCTCAAGGGGGATGCAGAC
 ACAAGGACCAATTCTCCAGACCTGGACACCCAGTCTTGTCCACAGCAGCGGGACCGACAGAGACCCTC
 TCCAAAGGATGGCAGGGGACAGCTTCACTCACAATAACAAGTCTATCCGTATGACTCCCTCATCGTCAC
 AAACCGAATTGCGGTGAAACTGCCCAAAGACGTGGACCGACGAGACTGGAGAGACACTTGTGCCCCGAG
 GAGTTCAGGAAGTGTGGGATGAGCATCGAGGAGTTTGACCGCTGCCCTCTGGAAGAGGAATGACC
 TTAAGAAGAAAGCCCTTTGTTC

ACGCGTACGCGGCCGCTCGAGCAGAAACTCATCTCAGAAGAGGATCTGGCAGCAAATGATATCCTGGATT
 ACAAGGATGACGACGATAAGGTTTAA

Protein Sequence:

>RC214746 representing NM_032432
 Red=Cloning site Green=Tags(s)

MSAVSQQAAPSPLEKSPSTAILCNTCGNVCKGEVLRVQDKYFHIKCFVCKACGCDLAEGGFFVRQGEYI
 CTLDYQRLYGTRCFSCDQFIEGEVVSALGKTYHPDCFVCAVCRLPFPFGDRVTFNGKECMCQKCSLPVSV
 GSSAHLSQLRSCGGCGTEIKNGQALVALDKHWHLGCFKCKSCGKLLNAEYISKDGLPYCEADYHAKFGI
 RCDSCEKYITGRVLEAGEKHYHPSCALCVRGQMFAGEEMYLQSSIIWHPACRQAARTEDRNKETRTSS
 ESIIISVPASSTSGSPSRVIYAKLGGIILDYRDLAALPKSKAIYIDRPMISYSPYISHSAGDRQSYGEG
 DQDDRSYKQCRSTSSPSTGSVSLGRYTPTSRSPQHYSRPAARRSDGEDGSLDQDNRKQKSSWMLKGDAD
 TRTNSPDLDTQSLSHSSGTDRDPLQRMAGDSFHSQYKIYPYDSLIVTNRIRVKLPKDVDRTRLERHLSPE
 EFQEVFGMSIEEFDRLALWKRNDLKKKALLF

TRTRPLEQKLISEEDLAANDILDYKDDDDKV

Chromatograms:

https://cdn.origene.com/chromatograms/mk8065_f09.zip

Restriction Sites:

Sgfl-Mlul

Cloning Scheme:


ACCN: NM_032432

ORF Size: 2063 bp

OTI Disclaimer: The molecular sequence of this clone aligns with the gene accession number as a point of reference only. However, individual transcript sequences of the same gene can differ through naturally occurring variations (e.g. polymorphisms), each with its own valid existence. This clone is substantially in agreement with the reference, but a complete review of all prevailing variants is recommended prior to use. [More info](#)

OTI Annotation: This clone was engineered to express the complete ORF with an expression tag. Expression varies depending on the nature of the gene.

Components: The ORF clone is ion-exchange column purified and shipped in a 2D barcoded Matrix tube containing 10ug of transfection-ready, dried plasmid DNA (reconstitute with 100 ul of water).

Reconstitution Method:

1. Centrifuge at 5,000xg for 5min.
2. Carefully open the tube and add 100ul of sterile water to dissolve the DNA.
3. Close the tube and incubate for 10 minutes at room temperature.
4. Briefly vortex the tube and then do a quick spin (less than 5000xg) to concentrate the liquid at the bottom.
5. Store the suspended plasmid at -20°C. The DNA is stable for at least one year from date of shipping when stored at -20°C.

RefSeq: [NM_032432.5](#)

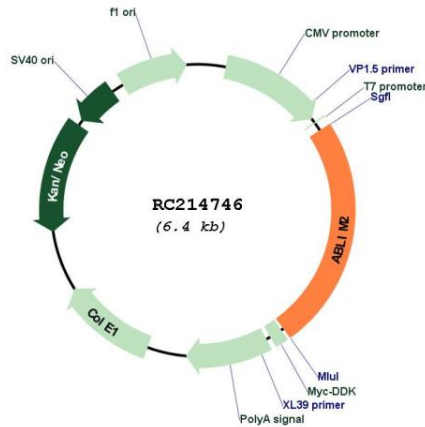
RefSeq Size: 3416 bp

RefSeq ORF: 1566 bp

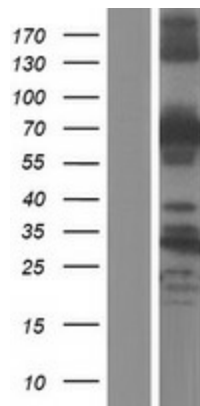
Locus ID: 84448

UniProt ID: [Q6H8Q1](#)

Cytogenetics: 4p16.1
Domains: LIM, VHP
Protein Pathways: Axon guidance
MW: 57.8 kDa
Gene Summary: May act as scaffold protein. May stimulate ABRA activity and ABRA-dependent SRF transcriptional activity.[UniProtKB/Swiss-Prot Function]

Product images:


Circular map for RC214746



Western blot validation of overexpression lysate (Cat# [LY410126]) using anti-DDK antibody (Cat# [TA50011-100]). Left: Cell lysates from untransfected HEK293T cells; Right: Cell lysates from HEK293T cells transfected with RC214746 using transfection reagent MegaTran 2.0 (Cat# [TT210002]).