

## Product datasheet for **RC214738**

### ZNF205 (NM\_003456) Human Tagged ORF Clone

#### Product data:

Product Type:	Expression Plasmids
Product Name:	ZNF205 (NM_003456) Human Tagged ORF Clone
Tag:	Myc-DDK
Symbol:	ZNF205
Synonyms:	RhitH; Zfp13; ZNF210
Mammalian Cell Selection:	Neomycin
Vector:	pCMV6-Entry (PS100001)
E. coli Selection:	Kanamycin (25 ug/mL)



[View online »](#)

**ORF Nucleotide Sequence:**

>RC214738 ORF sequence  
 Red=Cloning site Blue=ORF Green=Tags(s)

TTTTGTAATACGACTCACTATAGGGCGGCCGGAATTCGTCGACTGGATCCGGTACCGAGGAGATCTGCC  
 GCC**CGGATCGCC**

ATGCTGCAGACGGCGGAGGCATCCAGGACACCCAGGACAAGGAGACACCCCGGAGGTTCCAGATCGTG  
 GACATCCTCATCAGGAAATGCCTTCTAAGCTGGGGGAGGCGGTACCTTCAGGGGACGCTCAGGAGTCACT  
 GCACATTAAGATGGAGCCGAAGAGCCACACTCCGAGGGGCATCGCAGGAGGATGGGGCTCAAGGTGCC  
 TGGGGCTGGGCACCCCTAAGTCACGGCTCTAAGGAGAAAGCTCTCTTCTGCCTGGCGGAGCCCTCCCT  
 CCCCCGGATCCCGTGTCTTCCCGAGAGGGGAGGACCAGAGACCGGCAGATGGTGCAGCGCTCTCAC  
 TGCCTGGTCCCAGATGCCAGTACTTTCGAGGATGTGGCCTTGTACCTCTCCCGGAGGAGTGGGGACGG  
 CTGGACCACGCAGCAGAATTCTACAGGATGTCTGCAGAAGAAAAATGGGTGTACTGGGCTTTC  
 CCTTCAGCAGGCTTTCTGGGCCCTCAAGCGCACGGCAAGGGTGAAGCCTCGGGCTCCAGCCGGCAGGC  
 AGGAGATGAGAAGGAGTGGAGAGCGCGTGCACAGGAGCCGTGAGGTGGGGCAGAGGTCAGACCTCA  
 TCCGTGGCAGCCCTTGGGAATGTGAAGCCCTTCAGAACCAGGGCAGGGAGTCCAGTGGGGCGTCCCGC  
 AGTGCGCGCAGGAAGCAGCCTGCGGCCGGAGCTCAGGGCCGGCCAAAGACTCCGGGCAGCCGGCTGAGCC  
 AGATCGCACCCCGGATGCAGCTCCGCCAGACCCAGTCCACGGAGCCCGAGGATACCGCGTCCCGGAG  
 AAGCCCAACGAGGAGGAGAAGGGCGCCCGGAGAGTGGCAGGAGGGCCTGGCCCTGACAGTGAAGTGG  
 GCAGGAAGAGTACCGGTGCGAGCAGTGCAGCAAGGGCTTCAGCTGGCACTCGCACCTGGTGACGCACCG  
 GCGCACGCACAGGGCGAGAAGCCCTACGCCTGCACTGACTGCGGAAGCGCTTCGGCCGACGCTCGCAC  
 CTCATCCAGCACCAGATCATCCACACGGCGGAGAAGCCCTACACTGCCCCGCTGCCGGAAGAGCTTCA  
 GCCACCACTCCACGCTGATTACGACACAGCGCATCCACACCGGAGAGAAGCCCTACGTTGCCGCGCTG  
 CGCCAAGCGCTTACCCGCGCTCGGACTTGGTACCCACAGGGCACCCACAGGGCGCCAAGCCGCAC  
 AAGTGCCCATCTGCGCCAAGTGCTTACGCGAGGCTCGGCGTGTAGTACCCACCAGCGCACCCACACTG  
 GGGTCAAGCCCTATCCGTGCCCGAGTGCAGCAAGTGCTTCAAGCAGGTTCCAACCTCATCGGCACAA  
 CCGCACACACAGGCGAGAAGCCCTACCACTGCCTCGACTGCGGCAAGAGCTTCAAGCAGCTCGCAC  
 CTCACCGCGCACAGCGCACCCACCGTGGCGTGCAGCCCTACGCCTGCCGTTGTGCGGCAAGAGCTTCA  
 GCCGGCGCTCCAACCTGCACCGGCAGAGAAGATCCACACCACCGGGCCCAAGGCCCTGGCCATGCTGAT  
 GCTGGGGCGGGCGGGGGGCTCTGGCCACACCCCAACCGCTCCACC

**ACGCGT**ACGCGGCCGCTCGAGCAGAAACTCATCTCAGAAGAGGATCTGGCAGCAAATGATATCCTGGATT  
 ACAAGGATGACGACGATAAGGTTTAA

**Protein Sequence:**

>RC214738 protein sequence  
 Red=Cloning site Green=Tags(s)

MSADGGGIQDTQDKETPPEVPDRGPHQEMPSKLGAVPSGDAQESLHIKMEPEEPHSEGASQEDGAQGA  
 WGWAPLSHGSKEKALFLPGGALPSRIPVLSREGRTDRQMAAALLTAWSQMPVTFEDVALYL SREEWGR  
 LDHTQQNFYRDVQLQKNGLSLGFPFSRPFWAPQAHGKGEASGSSRQAGDEKEWRGACTGAVEVQQRVQTS  
 SVAALGNVVPFRTRAGRVQWVQPQAEAAACGRSSGPAKDSGQPAEPDRTPDAAPPDPSPTPEQYRVPE  
 KPNEEEKGAPESGEEGLAPDSEVGRKSYRCEQCGKGF SWHSHLVTHRRHTGKPYACTDCGKRFGRSSH  
 LIQHQLIHTGKPYTCPACRKSFSHSTLIQHQLIHTGKPYVCDRCAKRFTRRSDLVTHQGTHTGAKPH  
 KCPICAKCFTQSSALVTHQRTHGVKPYPCPECGKCF SQRSNLIAHNRHTGKPYHCLDCGKSFSSSH  
 LTAHQRTHRGVRYACPLCGKFSRRSNLHRHEKIHHTGPKALAMLMLGAAAAGALATPPPAPT

**TR**TRPLEQKLI SEEDLAANDILDYKDDDDKV

**Chromatograms:**

[https://cdn.origene.com/chromatograms/mk6572\\_g06.zip](https://cdn.origene.com/chromatograms/mk6572_g06.zip)

**Restriction Sites:**

Sgfl-Mlul

**Cloning Scheme:**

Cloning sites used for ORF Shutting:



\* The last codon before the Stop codon of the ORF

**ACCN:** NM\_003456

**ORF Size:** 1662 bp

**OTI Disclaimer:** The molecular sequence of this clone aligns with the gene accession number as a point of reference only. However, individual transcript sequences of the same gene can differ through naturally occurring variations (e.g. polymorphisms), each with its own valid existence. This clone is substantially in agreement with the reference, but a complete review of all prevailing variants is recommended prior to use. [More info](#)

**OTI Annotation:** This clone was engineered to express the complete ORF with an expression tag. Expression varies depending on the nature of the gene.

**Components:** The ORF clone is ion-exchange column purified and shipped in a 2D barcoded Matrix tube containing 10ug of transfection-ready, dried plasmid DNA (reconstitute with 100 ul of water).

**Reconstitution Method:**

1. Centrifuge at 5,000xg for 5min.
2. Carefully open the tube and add 100ul of sterile water to dissolve the DNA.
3. Close the tube and incubate for 10 minutes at room temperature.
4. Briefly vortex the tube and then do a quick spin (less than 5000xg) to concentrate the liquid at the bottom.
5. Store the suspended plasmid at -20°C. The DNA is stable for at least one year from date of shipping when stored at -20°C.

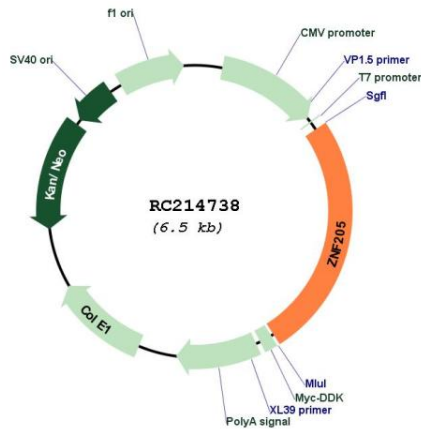
**RefSeq:** [NM\\_003456.2](#), [NP\\_003447.2](#)
**RefSeq Size:** 2077 bp

**RefSeq ORF:** 1665 bp

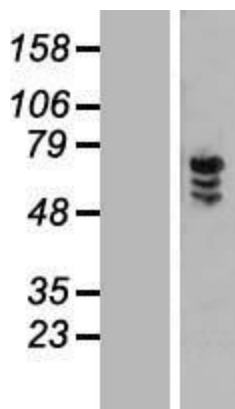
**Locus ID:** 7755

**UniProt ID:** [O95201](#)

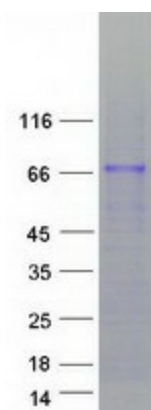
**Cytogenetics:** 16p13.3  
**Protein Families:** Transcription Factors  
**MW:** 60.6 kDa  
**Gene Summary:** May be involved in transcriptional regulation.[UniProtKB/Swiss-Prot Function]

**Product images:**


Circular map for RC214738



Western blot validation of overexpression lysate (Cat# [LY418666]) using anti-DDK antibody (Cat# [TA50011-100]). Left: Cell lysates from untransfected HEK293T cells; Right: Cell lysates from HEK293T cells transfected with RC214738 using transfection reagent MegaTran 2.0 (Cat# [TT210002]).



Coomassie blue staining of purified ZNF205 protein (Cat# [TP314738]). The protein was produced from HEK293T cells transfected with ZNF205 cDNA clone (Cat# RC214738) using MegaTran 2.0 (Cat# [TT210002]).