

Product datasheet for **RC214735**

PPAR delta (PPARD) (NM_006238) Human Tagged ORF Clone

Product data:

Product Type:	Expression Plasmids
Product Name:	PPAR delta (PPARD) (NM_006238) Human Tagged ORF Clone
Tag:	Myc-DDK
Symbol:	PPAR delta
Synonyms:	FAAR; NR1C2; NUC1; NUCI; NUCII; PPARB
Mammalian Cell Selection:	Neomycin
Vector:	pCMV6-Entry (PS100001)
E. coli Selection:	Kanamycin (25 ug/mL)



[View online »](#)

ORF Nucleotide Sequence:

>RC214735 representing NM_006238
 Red=Cloning site Blue=ORF Green=Tags(s)

TTTTGTAATACGACTCACTATAGGGCGGCCGGAATTCGTCGACTGGATCCGGTACCGAGGAGATCTGCC
 GCC**GCGATCGCC**

ATGGAGCAGCCACAGGAGGAAGCCCTGAGGTCGGGAAGAGGAGGAGAAAGAGGAAGTGGCAGAGGCAG
 AAGGAGCCCCAGAGCTCAATGGGGGACCACAGCATGCACTTCTTCCAGCAGCTACACAGACCTCTCCCG
 GAGCTCCTCGCCACCCTCACTGCTGGACCAACTGCAGATGGGCTGTGACGGGGCCTCATGCGGCAGCCTC
 AACATGGAGTGCCGGGTGTGCGGGGACAAGGCATCGGGCTTCCACTACGGTGTTCATGCATGTGAGGGGT
 GCAAGGGCTTCTCCGTCGTACGATCCGCATGAAGCTGGAGTACGAGAAGTGTGAGCGCAGCTGCAAGAT
 TCAGAAGAAGAACCGCAACAAGTCCAGTACTGCCGCTTCCAGAAGTGCCTGGCACTGGGCATGTCACAC
 AACGCTATCCGTTTTGGTCGGATGCCGGAGGCTGAGAAGAGGAAGCTGGTGGCAGGGCTGACTGCAAACG
 AGGGGAGCCAGTACAACCCACAGGTGGCCGACCTGAAGGCCTTCCAAGCACATCTACAATGCCTACCT
 GAAAAACTTCAACATGACCAAAAAGAAGGCCCGCAGCATCTCACGGCAAAGCCAGCCACACGGCGCCC
 TTTGTGATCCACGACATCGAGACATTGTGGCAGGCAGAGAAGGGGCTGGTGTGGAAGCAGTTGGTGAATG
 GCCTGCCTCCCTACAAGGAGATCAGCGTGCACGTCTTCTACCGCTGCCAGTGCACCACAGTGGAGACCGT
 GCGGGAGCTCACTGAGTTCGCCAAGAGCATCCCCAGCTTCCAGCAGCCTTCTCTCAACGACCAGGTTACC
 CTTCTCAAGTATGGCGTGCACGAGGCCATCTTCGCCATGCTGGCCTCTATCGTCAACAAGGACGGGCTGC
 TGGTAGCCAACGGCAGTGGCTTTGTCAACCGTGAAGTTCCTGCGCAGCCTCCGCAAACCTTCAGTGAAT
 CATTGAGCCTAAGTTTGAATTTGCTGTCAAGTTCAACGCCCTGGAAGTTCAGTACAGTGCCTGGCCCTA
 TTCATTGCGGCCATCATTCTGTGTGGAGACCGCCAGGCCATGAACGTTCCACGGGTGGAGGCATCC
 AGGACACCATCCTGCGTGCCTCGAATTCACCTGCAGGCCAACCCCTGATGCCAGTACCTCTTCCC
 CAAGCTGCTGCAGAAGATGGCTGACCTGCGGCAACTGGTCAACGAGCACGCCAGATGATGCAGCGGATC
 AAGAAGACCGAAACCGAGACCTCGCTGCACCCTCTGCTCCAGGAGATCTACAAGGACATGTAC

ACGCGTACGCGGCCGCTCGAGCAGAAACTCATCTCAGAAGAGGATCTGGCAGCAAATGATATCCTGGATT
 ACAAGGATGACGACGATAAGGTTTAA

Protein Sequence:

>RC214735 representing NM_006238
 Red=Cloning site Green=Tags(s)

MEQPQEEAPEVREEEKEEVAEAEAGAPELNGGPQHALPSSSYTDLSSSSPPSLLDQLQMGCDGASCGSL
 NMECRVCGDKASGFHYGVHACEGCKGFFRRTIRMKLEYEKERSCKIQKKNRNKCQYCRFQKCLALGMSH
 NAIRFGRMPEAEKRKL VAGL TANEGSQYNPQVADLKAFSKHIYNAYLKNFNMTKKKARSILTGKASHTAP
 FVIHDIETLWQAEKGLVWKQLVNLPPYKEISVHVFYRCQCTTVETVRELTEFAKSIKPSFSSFLNDQVT
 LLYKGVHEAIFAMLASIVNKDGLLVANGSGFVTRFLRSLRKPFSDIIEPKFEFAVKFNALELDDSDLAL
 FIAAIIILCGDRPGLMNVPRVEAIQDTILRALEFHLQANHPDAQYLFKLLQKMDLRQLVTEHAQMMQRI
 KKTETETSLHPLLQEIYKDMY

TRTRPLEQKLISEEDLAANDILDYKDDDDKV

Chromatograms:

https://cdn.origene.com/chromatograms/mk6270_a10.zip

Restriction Sites:

SgfI-MluI

Cloning Scheme:


ACCN: NM_006238

ORF Size: 1323 bp

OTI Disclaimer: Due to the inherent nature of this plasmid, standard methods to replicate additional amounts of DNA in E. coli are highly likely to result in mutations and/or rearrangements. Therefore, OriGene does not guarantee the capability to replicate this plasmid DNA. Additional amounts of DNA can be purchased from OriGene with batch-specific, full-sequence verification at a reduced cost. Please contact our customer care team at custsupport@origene.com or by calling 301.340.3188 option 3 for pricing and delivery.

The molecular sequence of this clone aligns with the gene accession number as a point of reference only. However, individual transcript sequences of the same gene can differ through naturally occurring variations (e.g. polymorphisms), each with its own valid existence. This clone is substantially in agreement with the reference, but a complete review of all prevailing variants is recommended prior to use. [More info](#)

OTI Annotation: This clone was engineered to express the complete ORF with an expression tag. Expression varies depending on the nature of the gene.

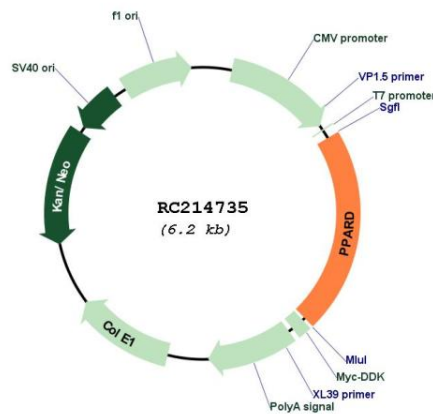
Components: The ORF clone is ion-exchange column purified and shipped in a 2D barcoded Matrix tube containing 10ug of transfection-ready, dried plasmid DNA (reconstitute with 100 ul of water).

- Reconstitution Method:**
1. Centrifuge at 5,000xg for 5min.
 2. Carefully open the tube and add 100ul of sterile water to dissolve the DNA.
 3. Close the tube and incubate for 10 minutes at room temperature.
 4. Briefly vortex the tube and then do a quick spin (less than 5000xg) to concentrate the liquid at the bottom.
 5. Store the suspended plasmid at -20°C. The DNA is stable for at least one year from date of shipping when stored at -20°C.

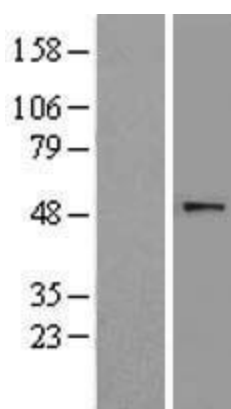
RefSeq: [NM_006238.5](#)

RefSeq Size:	3328 bp
RefSeq ORF:	1326 bp
Locus ID:	5467
UniProt ID:	Q03181
Cytogenetics:	6p21.31
Domains:	HOLI, zf-C4
Protein Families:	Druggable Genome, Nuclear Hormone Receptor, Transcription Factors
Protein Pathways:	Acute myeloid leukemia, Pathways in cancer, PPAR signaling pathway, Wnt signaling pathway
MW:	49.7 kDa
Gene Summary:	This gene encodes a member of the peroxisome proliferator-activated receptor (PPAR) family. The encoded protein is thought to function as an integrator of transcriptional repression and nuclear receptor signaling. It may inhibit the ligand-induced transcriptional activity of peroxisome proliferator activated receptors alpha and gamma, though evidence for this effect is inconsistent. Expression of this gene in colorectal cancer cells may be variable but is typically relatively low. Knockout studies in mice suggested a role for this protein in myelination of the corpus callosum, lipid metabolism, differentiation, and epidermal cell proliferation. Alternative splicing results in multiple transcript variants encoding distinct protein isoforms. [provided by RefSeq, Aug 2017]

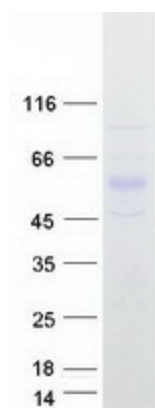
Product images:



Circular map for RC214735



Western blot validation of overexpression lysate (Cat# [LY416782]) using anti-DDK antibody (Cat# [TA50011-100]). Left: Cell lysates from untransfected HEK293T cells; Right: Cell lysates from HEK293T cells transfected with RC214735 using transfection reagent MegaTran 2.0 (Cat# [TT210002]).



Coomassie blue staining of purified PPARD protein (Cat# [TP314735]). The protein was produced from HEK293T cells transfected with PPARD cDNA clone (Cat# RC214735) using MegaTran 2.0 (Cat# [TT210002]).