

Product datasheet for RC214734

Archaemetzincin 2 (AMZ2) (NM_001033574) Human Tagged ORF Clone

Product data:

Product Type:	Expression Plasmids
Product Name:	Archaemetzincin 2 (AMZ2) (NM_001033574) Human Tagged ORF Clone
Tag:	Myc-DDK
Symbol:	Archaemetzincin 2
Mammalian Cell Selection:	Neomycin
Vector:	pCMV6-Entry (PS100001)
E. coli Selection:	Kanamycin (25 ug/mL)
ORF Nucleotide Sequence:	>RC214734 representing NM_001033574 Red=Cloning site Blue=ORF Green=Tags(s)

TTTTGTAATACGACTCACTATAGGGCGGCCGGAATTCGTCGACTGGATCCGGTACCGAGGAGATCTGCC
GCC**CGATCGCC**

ATGCAAATAATACGGCACTCCGAACAGACACTAAAAACAGCTCTCATCTCAAAGAACCCAGTGCTTGTAT
CACAGTATGAGAAATTAATGCTGGGGAACAACGTTTAAATGAATGAAGCCTTCCAGCCAGCCAGTGATCT
CTTTGGACCCATTACCTTGCATTCTCCATCAGATTGGATCACCTCCCACCCTGAGGCTCCCCAAGACTTT
GAACAGTTCCTCAGTGATCCTTACAGAAAGACACCCTTCCAAACAAACGCAGCATTATATACAGTCCA
TTGGGGACATCCTGAAGTCTTGAAAAAGAAGAAACCTGAAGATGCCTTCTGTGTTGGGAATAACAAT
GATTGATCTTTACCCAAGAGACTCGTGGAATTTTGTCTTTGGACAGGCCTCTTTCAGAGATGGTGTGGGG
ATATTCAGCTTTGCCAGGTATGGCAGTATTTTTATAGCATGCACTATAAAGGCAAAGTGAAGAAGCTCA
AGAAAACATCTTCAAGTACTATTCAATTTTCGACAACACTATTATTCAGAAATAACTAGTGTCTTACT
ACTTCGATCCTGTAAGACTTTAACCATGAGATCGGACACATATTTGGACTGCGACACTGCCAGTGGCTT
GCATGCCTCATGCAAGGCTCCAACCACTTGAAGAAGCTGACCGGCGCCCTCTAAACCTTTGCCCTATCT
GTTTGACAAGTTGCAGTGTGCTGTTGGCTTCAGCATTGTAGAAAGATACAAAGCACTGGTGAAGTGGAT
TGATGATGAATCTTCTGACACACCTGGAGCAACTCCAGAACACAGTCACGAGGATAATGGGAATTTACCG
AAACCCGTGGAAGCCTTTAAGGAATGAAAGAGTGGATAATAAAATGCCTGGCTGTTCTCCAAAAA

ACGCGTACGCGGCCGCTCGAGCAGAAACTCATCTCAGAAGAGGATCTGGCAGCAAATGATATCCTGGATT
ACAAGGATGACGACGATAAGGTTTAA



[View online »](#)

Protein Sequence: >RC214734 representing NM_001033574
Red=Cloning site Green=Tags(s)

MQIIRHSEQLTKTALISKNPVLVSQYEKLNAGEQRLMNEAFQPASDLFGPITLHSPSDWITSHPEAPQDF
 EQFFSDPYRKTPSPNKRSIYIQSIGDILKFLKKKKPEDAFVVGITMIDLYPRDSWNFVFGQASLTDGVG
 IFSFARYGSDFYSMHYKGVKLLKKTSSSDYSIFDNYIPEITSVLLLRCKTLTHEIGHIFGLRHCQWL
 ACLMQGSNHLEEDRRPLNLCPICLHKLQCAVGF SIVERYKALVRWIDDESSDTPGATPEHSHEDGNLPL
 KPVEAFKEWKEWIKCLAVLQK

TRTRPLEQKLISEEDLAANDILDYKDDDDKV

Chromatograms: https://cdn.origene.com/chromatograms/mk8050_f12.zip

Restriction Sites: Sgfl-MluI

Cloning Scheme:

Cloning sites used for ORF Shuttling:



* The last codon before the Stop codon of the ORF

ACCN: NM_001033574

ORF Size: 906 bp

OTI Disclaimer: The molecular sequence of this clone aligns with the gene accession number as a point of reference only. However, individual transcript sequences of the same gene can differ through naturally occurring variations (e.g. polymorphisms), each with its own valid existence. This clone is substantially in agreement with the reference, but a complete review of all prevailing variants is recommended prior to use. [More info](#)

OTI Annotation: This clone was engineered to express the complete ORF with an expression tag. Expression varies depending on the nature of the gene.

Components: The ORF clone is ion-exchange column purified and shipped in a 2D barcoded Matrix tube containing 10ug of transfection-ready, dried plasmid DNA (reconstitute with 100 ul of water).

Reconstitution Method:

1. Centrifuge at 5,000xg for 5min.
2. Carefully open the tube and add 100ul of sterile water to dissolve the DNA.
3. Close the tube and incubate for 10 minutes at room temperature.
4. Briefly vortex the tube and then do a quick spin (less than 5000xg) to concentrate the liquid at the bottom.
5. Store the suspended plasmid at -20°C. The DNA is stable for at least one year from date of shipping when stored at -20°C.

RefSeq: [NM_001033574.1](#), [NP_001028746.1](#)

RefSeq Size: 1806 bp

RefSeq ORF: 909 bp

Locus ID: 51321

UniProt ID: [Q86W34](#)

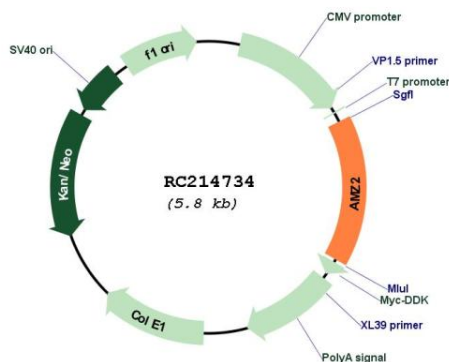
Cytogenetics: 17q24.2

Protein Families: Druggable Genome

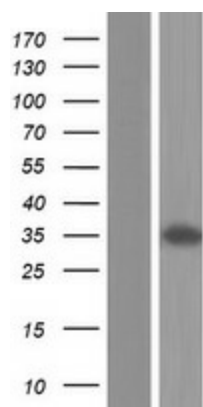
MW: 34.4 kDa

Gene Summary: The protein encoded by this gene is a zinc metalloprotease that displays some activity against angiotensin-3. The encoded protein is inhibited by the aminopeptidase inhibitor amastatin, as well as by the general inhibitors o-phenanthroline and batimastat. Defects in this gene may be associated with lung tumorigenesis. [provided by RefSeq, Oct 2016]

Product images:



Circular map for RC214734



Western blot validation of overexpression lysate (Cat# [LY422399]) using anti-DDK antibody (Cat# [TA50011-100]). Left: Cell lysates from untransfected HEK293T cells; Right: Cell lysates from HEK293T cells transfected with RC214734 using transfection reagent MegaTran 2.0 (Cat# [TT210002]).