

## Product datasheet for RC214728

### Calcipressin 1 (RCAN1) (NM\_203418) Human Tagged ORF Clone

#### Product data:

**Product Type:** Expression Plasmids  
**Product Name:** Calcipressin 1 (RCAN1) (NM\_203418) Human Tagged ORF Clone  
**Tag:** Myc-DDK  
**Symbol:** Calcipressin 1  
**Synonyms:** ADAPT78; CSP1; DSC1; DSCR1; MCIP1; RCN1  
**Mammalian Cell Selection:** Neomycin  
**Vector:** pCMV6-Entry (PS100001)  
**E. coli Selection:** Kanamycin (25 ug/mL)  
**ORF Nucleotide Sequence:** >RC214728 representing NM\_203418  
Red=Cloning site Blue=ORF Green=Tags(s)

TTTTGTAATACGACTCACTATAGGGCGCCGGAATTCGTCGACTGGATCCGGTACCGAGGAGATCTGCC  
GCC**CGATCGCC**

ATGCATTTTAGAACTTTAACTACAGTTTTAGCTCCCTGATTGCCTGTGTGGCAAACAGTGATATCTTCA  
GCGAAAGTGAAACCAGGGCCAAATTTGAGTCCCTCTTAGGACGTATGACAAGGACATCACCTTTTCAGTA  
TTTTAAGAGCTTCAAACGAGTCAGAATAAACTTCAGCAACCCCTCTCCGAGCAGATGCCAGGCTCCAG  
CTGCATAAGACTGAGTTTCTGGAAAGGAAATGAAGTTATATTTTCTCAGACCTTACACATAGGAAGCT  
CACACCTGGCTCCGCAAATCCAGACAAGCAGTTTCTGATCTCCCTCCCGCCTCTCCGCCAGTGGGATG  
GAAACAAGTGGAAGATGCGACCCAGTCATAAACTATGATCTTATATGCCATCTCCAAGCTGGGGCCA  
GGGAAAAGTATGAATTGCACGCAGCGACTGACACCCTCCAGCGTGGTGGTCCATGTATGTGAGAGTG  
ATCAAGAGAAGGAGGAAGAAGAGGAAATGGAAAGAATGAGGAGACCTAAGCCAAAATTATCCAGACCAG  
GAGGCCGAGTACACGCCGATCCACCTCAGC

**ACGCGT**ACGCGGCCGCTCGAGCAGAACTCATCTCAGAAGAGGATCTGGCAGCAAATGATATCCTGGATT  
ACAAGGATGACGACGATAAGGTTTAA

**Protein Sequence:** >RC214728 representing NM\_203418  
Red=Cloning site Green=Tags(s)

MHFRNFNYSFSSLIACVANSDFSESETRAKFESLFRITYDKDITFQYFKSFKRVRINFSNPFSAADARLQ  
LHKTEFLGKEMKLYFAQTLHIGSSHLAPPNDKQFLISPPASPPVGWKQVEDATPVINYDLLYAIKSLGP  
GEKYLHAATDTPSVVVHVCESDQEKEEEEEEMERMRRPKKIIQTRRPEYTPIHLS

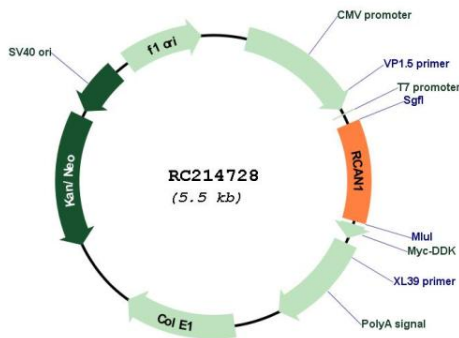
**TRTRPLEQKLI**SEEDLAANDILDYKDDDDKV



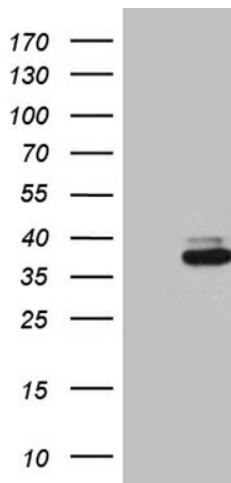


**UniProt ID:** [P53805](#)  
**Cytogenetics:** 21q22.12  
**Protein Families:** Transcription Factors  
**MW:** 22.6 kDa  
**Gene Summary:** The protein encoded by this gene interacts with calcineurin A and inhibits calcineurin-dependent signaling pathways, possibly affecting central nervous system development. This gene is located in the minimal candidate region for the Down syndrome phenotype, and is overexpressed in the brain of Down syndrome fetuses. Chronic overexpression of this gene may lead to neurofibrillary tangles such as those associated with Alzheimer disease. Alternative splicing results in multiple transcript variants. [provided by RefSeq, Nov 2013]

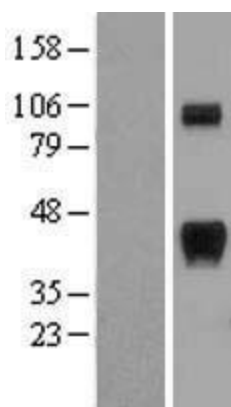
**Product images:**



Circular map for RC214728



HEK293T cells were transfected with the pCMV6-ENTRY control (Cat# [PS100001], Left lane) or pCMV6-ENTRY RCAN1 (Cat# RC214728, Right lane) cDNA for 48 hrs and lysed. Equivalent amounts of cell lysates (5 ug per lane) were separated by SDS-PAGE and immunoblotted with anti-RCAN1 (1:2000) (Cat# [TA810470]). Positive lysates [LY403714] (100ug) and [LC403714] (20ug) can be purchased separately from OriGene.



Western blot validation of overexpression lysate (Cat# [LY403714]) using anti-DDK antibody (Cat# [TA50011-100]). Left: Cell lysates from untransfected HEK293T cells; Right: Cell lysates from HEK293T cells transfected with RC214728 using transfection reagent MegaTran 2.0 (Cat# [TT210002]).