

## Product datasheet for **RC214727**

### SRP72 (NM\_006947) Human Tagged ORF Clone

#### Product data:

Product Type:	Expression Plasmids
Product Name:	SRP72 (NM_006947) Human Tagged ORF Clone
Tag:	Myc-DDK
Symbol:	SRP72
Synonyms:	BMFF; BMFS1; HEL103
Mammalian Cell Selection:	Neomycin
Vector:	pCMV6-Entry (PS100001)
E. coli Selection:	Kanamycin (25 ug/mL)



[View online »](#)

ORF Nucleotide  
Sequence:

>RC214727 representing NM\_006947  
Red=Cloning site Blue=ORF Green=Tags(s)

TTTTGTAATACGACTCACTATAGGGCGGCCGGAATTCGTGACTGGATCCGGTACCGAGGAGATCTGCC  
GCCGCGATCGCC

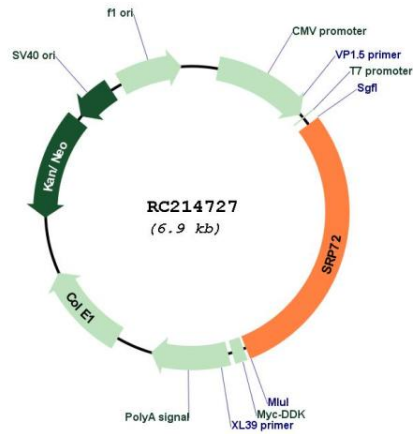
ATGGCGAGCGCGGCAGCGGGGGTGTACGTACCTGCGCTGTGGAGTGAAGTGAACCGGTATGGCCAGA  
ACGGCGACTTCACGCGCGCTCTCAAGACCGTCAATAAGATACTACAGATCAACAAAGATGACGTAATGC  
CCTGCATTGTAAAGTGGTATGCCTTATCCAGAATGGAAGTTTCAAGGAAGCTTTGAATGTCATCAATACT  
CACACCAAAGTGTAGCCAATACTCTCTCTCTTTGAAAAGGCATATTGCGAGTACAGGCTGAACAGAA  
TTGAGAATGCCTGAAGACAATAGAAAGTGCCAACCGAGCAGACAGACAACTGAAGGAGCTTTATGGACA  
AGTGTATATCGTTTGAACGCTATGATGAATGCTTAGCAGTGTATAGAGATCTCGTCCGAACTCCCAA  
GATGATTATGATGAGGAGAGGAAAACAAACCTTTCAGCAGTTGTTGCAGCTCAAAGCAATTGGGAAAAAG  
TGGTTCAGAGAACCTGGGCCTCCAAGAAGGCACACATGAGCTGTGCTACAACACTGCATGTGACTGAT  
AGGCCAAGGCCAGCTGAACCGCCATGAAAATCTACAAAAGCTGAAGATCTTGGCCCGTTTACCTA  
TCAGAAGACACTGATGGGACTGAGGAAGACCCACAGGCAGAACTGGCCATCATTATGGTCAGATGGCTT  
ATATTCTGCAGCTTCAGGTCGAACAGAGGAGGCTTTGCAACTTTACAATCAAATAATAAACTAAAACC  
AACAGATGTGGGATTACTAGCTGTAATTGCAAATAACATCATTACCATTAAACAAGGACAAAAATGTCTTT  
GACTCCAAGAAGAAAGTGAATTAACCAATGCGGAAGGAGTAGAGTTTAAAGCTTTCCAAGAAACAACCTAC  
AAGCTATAGAATTTAACAAGCTTTACTTGCTATGTACACAAACCAGGCTGAACAATGCCGCAAAATATC  
TGCCAGTTTACAGTCCCAAAGTCCCGAGCATCTTTACCTGTGTTAATCCAAGCTGCCAGCTCTGCCGT  
GAAAAGCAGCACACAAAAGCAATAGAGCTGCTTCAGGAATTTTCAGATCAGCATCCAGAAAATGCAGCTG  
AAATTAAGCTGACCATGGCAGTTGAAAATTTCTCAAGTAATATTTCTAAAGCATGTCTAATATTGAG  
AAGCATAGAGGAGTTAAAGCATAAACCAGGCATGGTATCTGCATTAGTTACCATGTATAGCCATGAAGAA  
GATATTGATAGTGCCATTGAGGTCTTACACAAGCTATCCAGTGGTATCAAAACCATCAGCCAAAATCTC  
CTGCTCATTGTCTTGATAAGAGAAGCTGCAAACTTCAAACCTCAAATATGGGCGGAAGAAGGAGGCAAT  
TAGTGACCTACAACAGCTGTGGAAACAAAATCCAAAAGATATTACACCCCTGGCAGCTTATTTCTGCT  
TACTCACTTGTAGATCCAGAGAAAGCCAAAGCTTTAGTAAACACTTGCCATCGTCAGATAGTATGTCTC  
TAAAAGTAGATGTTGAGGCTCTTGAATTTCTGCTGGTGTACATACATTGGAAGAAGGGTGGAAAAGT  
TACTGGAGATAGTCAACCAAGGAACAAGGACAGGAGATTTGAAAAGAAGAAAAGAAAAGAAAGGGA  
AAATTGCCTAAGAATTATGACCCAAAAGTTACCCAGATCCAGAAAGATGGCTGCCAATGCGAGAACGTT  
CTTACTACCGGGGAAAGAAGGGTAAAAGAAGGATCAGATTGAAAAGGGACCCAGGGAGCAACTGC  
AGGAGCTTCATCTGAACTGGATGCCAGTAAAACCTGTGAGCAGCCACCCACCTCCCAAGACCTGGCAGT  
GCTGCAACAGTATCTGCCTCTACAAGTAACATCATACCCCAAGACACCAGAAAACCTGCAGGGGCTCCAG  
CAACAAAAGAAAACAGCAACAGAAAAGAAAGGTTGAAAAGGTGGTGG

ACGCGTACGCGGCCGCTCGAGCAGAACTCATCTCAGAAGAGGATCTGGCAGCAATGATATCCTGGATT  
ACAAGGATGACGACGATAAGGTTTAA

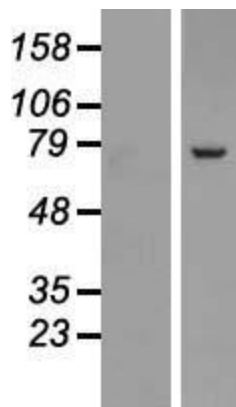


<b>Reconstitution Method:</b>	<ol style="list-style-type: none"><li>1. Centrifuge at 5,000xg for 5min.</li><li>2. Carefully open the tube and add 100ul of sterile water to dissolve the DNA.</li><li>3. Close the tube and incubate for 10 minutes at room temperature.</li><li>4. Briefly vortex the tube and then do a quick spin (less than 5000xg) to concentrate the liquid at the bottom.</li><li>5. Store the suspended plasmid at -20°C. The DNA is stable for at least one year from date of shipping when stored at -20°C.</li></ol>
<b>RefSeq:</b>	<a href="#">NM_006947.4</a>
<b>RefSeq Size:</b>	3852 bp
<b>RefSeq ORF:</b>	2016 bp
<b>Locus ID:</b>	6731
<b>UniProt ID:</b>	<a href="#">O76094</a>
<b>Cytogenetics:</b>	4q12
<b>Domains:</b>	TPR
<b>Protein Pathways:</b>	Protein export
<b>MW:</b>	74.4 kDa
<b>Gene Summary:</b>	<p>This gene encodes the 72 kDa subunit of the signal recognition particle (SRP), a ribonucleoprotein complex that mediates the targeting of secretory proteins to the endoplasmic reticulum (ER). The SRP complex consists of a 7S RNA and 6 protein subunits: SRP9, SRP14, SRP19, SRP54, SRP68, and SRP72, that are bound to the 7S RNA as monomers or heterodimers. SRP has at least 3 distinct functions that can be associated with the protein subunits: signal recognition, translational arrest, and ER membrane targeting by interaction with the docking protein. Mutations in this gene are associated with familial bone marrow failure. Alternatively spliced transcript variants encoding different isoforms have been found for this gene. [provided by RefSeq, Jun 2012]</p>

Product images:



Circular map for RC214727



Western blot validation of overexpression lysate (Cat# [LY416310]) using anti-DDK antibody (Cat# [TA50011-100]). Left: Cell lysates from untransfected HEK293T cells; Right: Cell lysates from HEK293T cells transfected with RC214727 using transfection reagent MegaTran 2.0 (Cat# [TT210002]).