

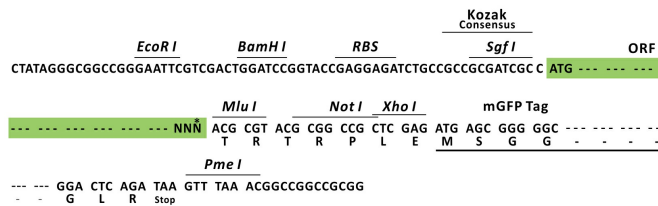
Product datasheet for RC214724L2

SRP68 (NM_014230) Human Tagged Lenti ORF Clone

Product data:

Product Type:	Expression Plasmids
Product Name:	SRP68 (NM_014230) Human Tagged Lenti ORF Clone
Tag:	mGFP
Symbol:	SRP68
Mammalian Cell Selection:	None
Vector:	pLenti-C-mGFP (PS100071)
E. coli Selection:	Chloramphenicol (34 ug/mL)
ORF Nucleotide Sequence:	The ORF insert of this clone is exactly the same as(RC214724).
Restriction Sites:	Sgfl-MluI
Cloning Scheme:	

Cloning sites used for ORF Shuttling:



* The last codon before the Stop codon of the ORF.

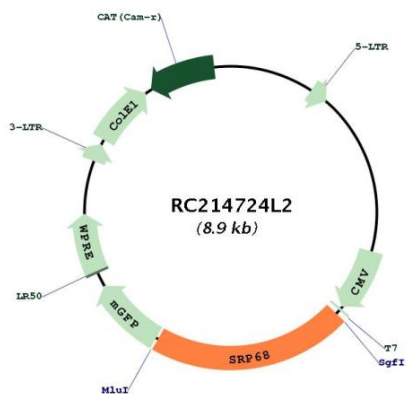
ACCN:	NM_014230
ORF Size:	1881 bp



[View online »](#)

OTI Disclaimer:	The molecular sequence of this clone aligns with the gene accession number as a point of reference only. However, individual transcript sequences of the same gene can differ through naturally occurring variations (e.g. polymorphisms), each with its own valid existence. This clone is substantially in agreement with the reference, but a complete review of all prevailing variants is recommended prior to use. More info
OTI Annotation:	This clone was engineered to express the complete ORF with an expression tag. Expression varies depending on the nature of the gene.
Components:	The ORF clone is ion-exchange column purified and shipped in a 2D barcoded Matrix tube containing 10ug of transfection-ready, dried plasmid DNA (reconstitute with 100 ul of water).
Reconstitution Method:	<ol style="list-style-type: none">1. Centrifuge at 5,000xg for 5min.2. Carefully open the tube and add 100ul of sterile water to dissolve the DNA.3. Close the tube and incubate for 10 minutes at room temperature.4. Briefly vortex the tube and then do a quick spin (less than 5000xg) to concentrate the liquid at the bottom.5. Store the suspended plasmid at -20°C. The DNA is stable for at least one year from date of shipping when stored at -20°C.
RefSeq:	NM_014230.2
RefSeq Size:	2515 bp
RefSeq ORF:	1884 bp
Locus ID:	6730
UniProt ID:	Q9UHB9
Cytogenetics:	17q25.1
Protein Pathways:	Protein export
MW:	70.5 kDa
Gene Summary:	This gene encodes a subunit of the signal recognition particle (SRP). The SRP is a ribonucleoprotein complex that transports secreted and membrane proteins to the endoplasmic reticulum for processing. The complex includes a 7S RNA and six protein subunits. The encoded protein is the 68kDa component of the SRP, and forms a heterodimer with the 72kDa subunit that is required for SRP function. Alternatively spliced transcript variants encoding multiple isoforms have been observed for this gene, and three pseudogenes of this gene are located within the Smith-Magenis syndrome region on chromosome 17. [provided by RefSeq, May 2012]

Product images:



Circular map for RC214724L2