

## Product datasheet for RC214713

### IFNA16 (NM\_002173) Human Tagged ORF Clone

#### Product data:

**Product Type:** Expression Plasmids  
**Product Name:** IFNA16 (NM\_002173) Human Tagged ORF Clone  
**Tag:** Myc-DDK  
**Symbol:** IFNA16  
**Synonyms:** IFN-alpha-16; IFN-alphaO  
**Mammalian Cell Selection:** Neomycin  
**Vector:** pCMV6-Entry (PS100001)  
**E. coli Selection:** Kanamycin (25 ug/mL)  
**ORF Nucleotide Sequence:** >RC214713 representing NM\_002173  
 Red=Cloning site Blue=ORF Green=Tags(s)

TTTTGTAATACGACTCACTATAGGGCGGCCGGAATTCGTCGACTGGATCCGGTACCGAGGAGATCTGCC  
 GCC**CGATCGCC**

ATGGCCCTGTCTTTTCTTTACTGATGGCCGTGCTGGTGCTCAGCTACAAATCCATCTGTTCTCTGGGCT  
 GTGATCTGCCTCAGACTCACAGCCTGGGTAATAGGAGGGCCTTGATACTCCTGGCACAAATGGGAAGAAT  
 CTCTCATTTCTCCTGCCTGAAGGACAGATGATTTCCGATTCCCCAGGAGGTGTTGATGGCAACCAG  
 TTCCAGAAGGCTCAAGCCATCTCTGCCTCCATGAGATGATCCAGCAGACCTTCAATCTCTCAGCACAA  
 AGGATTCTCTGCTGCTGGGATGAGACCCTCCTAGACAAATTCTACATTGAACTTTCCAGCAACTGAA  
 TGACCTAGAAGCCTGTGTGACACAGGAGGTTGGGGTGGAAAGAGATTGCCCTGATGAATGAGGACTCCATC  
 CTGGCTGTGAGGAAATACTTTCAAAGAATCACTCTTTATCTGATGGGGAAGAAATACAGCCCTTGTGCCT  
 GGGAGGTTGTGAGAGCAGAAATCATGAGATCCTTCTCTTTTTCAACAACTTGCAAAAAGGATTAAGAAG  
 GAAGGAT

**ACGCGT**ACGCGGCCGCTCGAGCAGAAACTCATCTCAGAAGAGGATCTGGCAGCAATGATATCCTGGATT  
 ACAAGGATGACGACGATAAGGTTTAA

**Protein Sequence:** >RC214713 representing NM\_002173  
 Red=Cloning site Green=Tags(s)

MALSFLLMAVLVLSYKSICSLGCDLPQTHSLGNRRALILLAQMGRISHFSLKDRYDFGFPPQEVFDGNQ  
 FQKAQAISAFHEMIQQTFNLFSTKDSSAAWDETLDDKFIYELFQQLNDLEACVTQEVGVVEIALMNEDSI  
 LAVRKYFQRITLYLMGKKYSPCAWEVRAEIMRSFSFSTNLQKGLRRKD

**TRTRPLEQKLI**SEEDLAANDILDYKDDDDKV



[View online »](#)

**Chromatograms:** [https://cdn.origene.com/chromatograms/mg3718\\_g01.zip](https://cdn.origene.com/chromatograms/mg3718_g01.zip)

**Restriction Sites:** SgfI-MluI

**Cloning Scheme:**



**ACCN:** NM\_002173

**ORF Size:** 567 bp

**OTI Disclaimer:** The molecular sequence of this clone aligns with the gene accession number as a point of reference only. However, individual transcript sequences of the same gene can differ through naturally occurring variations (e.g. polymorphisms), each with its own valid existence. This clone is substantially in agreement with the reference, but a complete review of all prevailing variants is recommended prior to use. [More info](#)

**OTI Annotation:** This clone was engineered to express the complete ORF with an expression tag. Expression varies depending on the nature of the gene.

**Components:** The ORF clone is ion-exchange column purified and shipped in a 2D barcoded Matrix tube containing 10ug of transfection-ready, dried plasmid DNA (reconstitute with 100 ul of water).

**Reconstitution Method:**

1. Centrifuge at 5,000xg for 5min.
2. Carefully open the tube and add 100ul of sterile water to dissolve the DNA.
3. Close the tube and incubate for 10 minutes at room temperature.
4. Briefly vortex the tube and then do a quick spin (less than 5000xg) to concentrate the liquid at the bottom.
5. Store the suspended plasmid at -20°C. The DNA is stable for at least one year from date of shipping when stored at -20°C.

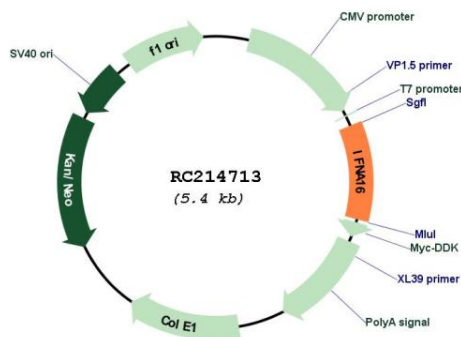
**Note:** Plasmids are not sterile. For experiments where strict sterility is required, filtration with 0.22um filter is required.

**RefSeq:** [NM\\_002173.3](#), [NP\\_002164.1](#)

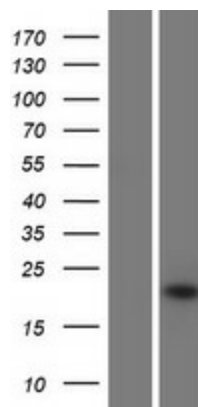
**RefSeq Size:** 941 bp

**RefSeq ORF:** 570 bp  
**Locus ID:** 3449  
**UniProt ID:** [P05015](#)  
**Cytogenetics:** 9p21.3  
**Protein Families:** Druggable Genome, Secreted Protein  
**Protein Pathways:** Antigen processing and presentation, Autoimmune thyroid disease, Cytokine-cytokine receptor interaction, Cytosolic DNA-sensing pathway, Jak-STAT signaling pathway, Natural killer cell mediated cytotoxicity, Regulation of autophagy, RIG-I-like receptor signaling pathway, Toll-like receptor signaling pathway  
**MW:** 21.5 kDa  
**Gene Summary:** Produced by macrophages, IFN-alpha have antiviral activities. Interferon stimulates the production of two enzymes: a protein kinase and an oligoadenylate synthetase. [UniProtKB/Swiss-Prot Function]

### Product images:



Circular map for RC214713



Western blot validation of overexpression lysate (Cat# [LY419490]) using anti-DDK antibody (Cat# [TA50011-100]). Left: Cell lysates from untransfected HEK293T cells; Right: Cell lysates from HEK293T cells transfected with RC214713 using transfection reagent MegaTran 2.0 (Cat# [TT210002]).