

Product datasheet for **RC214710**

BTBD3 (NM_014962) Human Tagged ORF Clone

Product data:

Product Type:	Expression Plasmids
Product Name:	BTBD3 (NM_014962) Human Tagged ORF Clone
Tag:	Myc-DDK
Symbol:	BTBD3
Synonyms:	dj742j24.1
Mammalian Cell Selection:	Neomycin
Vector:	pCMV6-Entry (PS100001)
E. coli Selection:	Kanamycin (25 ug/mL)



[View online »](#)

ORF Nucleotide Sequence:

>RC214710 representing NM_014962
 Red=Cloning site Blue=ORF Green=Tags(s)

TTTTGTAATACGACTCACTATAGGGCGGCCGGAATTCGTCGACTGGATCCGGTACCGAGGAGATCTGCC
 GCC**CGGATCGCC**

ATGGTAGATGACAAGGAAAAGAACATGAAATGTCTCACCTTCTTCTTGATGCTTCCAGAGACGGTAAAGA
 ACAGGTCCAAGAAAAGCTCAAAGAAAGCAAATACCAGCAGCAGCAGTAGCAACAGCAGCAAGTTGCCACC
 AGTTTGTATGAAATAATTACCTTGAAGACTAAAAAGAAGAAGATGGCTGCTGATATATCCCCCGTAAA
 AAGCCAGCCAACCTCCAGCAGCACCAGCGTCCAGCAGTACCACCAGCAGAACTCAGTAACAACAACCTTA
 TCCCGGCCCAAACCTGGCAGGGTCTTTATCCCACCATTAGAGAGAGAAAATGCGATGATGTTCAATAATGA
 TTTGATGCGAGATGTACATTTTGTGGTTGGGCCACCAGGTGGGACTCAACGGTTGCCAGGACACAAATAT
 GTTTTAGCTGTTGGGAGCTCTGTGTTCCATGCGATGTTTTACGGAGAACTGCAGAGGACAAAGATGAAA
 TCCGTATACCAGATGTGAACTGCTGCTTTTCTCGCTATGCTGAAATATATCTATTGTGATGAAATTGA
 CTTGGCTGCTGACACAGTCTGGCCACACTTTATGCTGCCAAAAGTACATTGTCCCTCACCTTGCCAGA
 GCCTGTGTTAATTTCTGGAGACCAGCCTGAGTGCCAAGAATGCCTGTGTGCTCCTCCAGAGCTGCC
 TGTTCCAGGAGCCAGACCTGACCAGCGTTGCTGGGAGGTGATTGATGCCAGGCTGAGTTAGCTCTCAA
 GTCTGAGGGATTCTGCGATATTGACTTCCAGACACTAGAAAAGTATTCTCCGTAGGGAAAACCTGAATGCC
 AAAGAAATTTGGGTTTTTGGAGCAGCTCTCAACTGGGCTGAAGTAGAATGCCAACGACAAGATCTGGCGT
 TGAGCATTGAAAATAAACGCAAGGTTCTAGGAAAGGCACCTTACTTGTATCCGCATACCCACAATGGCCCT
 CGATGATTTTGCAATGGTGTGTCACAGTCCGGGGTATTAAGTCTCAATGAGACCAACGACATCTTCCTC
 TGGTATACTGCAGCCAAAAGCCTGAGCTTCAGTTTGTGAGTAAAGCCCGTAAGGGCCTTGTCGCCAGC
 GCTGTACCCGTTTCCAGTCGTGTGCCTATCGAAGCAACCAATGGCGCTATCGTGGTCTGTGACAGCAT
 CCAGTTTGCAGTTGATAAAAGAGTGTTCATTGCTGGCTTTGGGCTGTATGGCTCCAGCTGGGTTCTGCA
 GAATACAGTGCCAAGATTGAACTTAAGCGGCAGGGCGTTGCTCCTGGGCGAGAAGTTGAGCAAGTACTTCT
 CAGATGGTCCAGCAATACCTTTCCCGTATGGTTTGAATACCCAGTGCAGATCGAGCCAGACACCTTCTA
 CACAGCCAGTGTGATACTGGATGGCAATGAACTCAGCTACTTTGGACAAGAAGGCATGACAGAAGTTCAG
 TGTGGCAAAGTGACTGTCCAGTTTCACTGCTCCTCAGATAGCACCAATGGCACTGGGGTACAGGGAGGGC
 AGATCCCTGAACCTATATTCTATGCT

ACGCGTACGCGGCCGCTCGAGCAGAAACTCATCTCAGAAGAGGATCTGGCAGCAAATGATATCCTGGATT
 ACAAGGATGACGACGATAAGGTTTAA

Protein Sequence:

>RC214710 representing NM_014962
 Red=Cloning site Green=Tags(s)

MVDDKEKNMKCLTFFLMLPETVKNRSKSKKANTSSSSSNSSKLPVCEIITLTKKKKMAADIFPRK
 KPANSSTSVQYHQQLSNNLIPAPNWQGLYPTIRERNAMFNNDLMADVHFVVGPPGGTQRLPGHKY
 VLAVGSSVFHAMFYGELAEDKDEIRIPDVEPAFLAMLKYIYCDEIDLAADTVLATLYAAKKYIVPHLAR
 ACVNFLETSLSAKNACVLLSQSCLFEEDLTQRCWEVIDAQAELALKSEGFCDIDFQTLESILRRETLNA
 KEIVVFEAALNWAIEVCQRQDLALSIENKRKVLGKALYLIRIPTMALDDFANGAAQSGVLTNETNDIFL
 WYTAAKKPELQFVSKARKGLVPQRCHRFSQAYRSNQWRYRGRCDISIQFVDKRVFIAGFGLYGSSCGSA
 EYSAKIELKRQGVVLGQNL SKYFSDGSSNTFPVWFYEPVQIEPDTFYTASVILDGNELSYFGQEGMTEVQ
 CGKVTVQFQCSSDSTNGTGVQGGQIPELIFYA

TRTRPLEQKLISEEDLAANDILDYKDDDDKV

Chromatograms:

https://cdn.origene.com/chromatograms/mk6481_b12.zip

Restriction Sites:

Sgfl-MluI

Cloning Scheme:


ACCN: NM_014962

ORF Size: 1566 bp

OTI Disclaimer: Due to the inherent nature of this plasmid, standard methods to replicate additional amounts of DNA in E. coli are highly likely to result in mutations and/or rearrangements. Therefore, OriGene does not guarantee the capability to replicate this plasmid DNA. Additional amounts of DNA can be purchased from OriGene with batch-specific, full-sequence verification at a reduced cost. Please contact our customer care team at custsupport@origene.com or by calling 301.340.3188 option 3 for pricing and delivery.

The molecular sequence of this clone aligns with the gene accession number as a point of reference only. However, individual transcript sequences of the same gene can differ through naturally occurring variations (e.g. polymorphisms), each with its own valid existence. This clone is substantially in agreement with the reference, but a complete review of all prevailing variants is recommended prior to use. [More info](#)

OTI Annotation: This clone was engineered to express the complete ORF with an expression tag. Expression varies depending on the nature of the gene.

Components: The ORF clone is ion-exchange column purified and shipped in a 2D barcoded Matrix tube containing 10ug of transfection-ready, dried plasmid DNA (reconstitute with 100 ul of water).

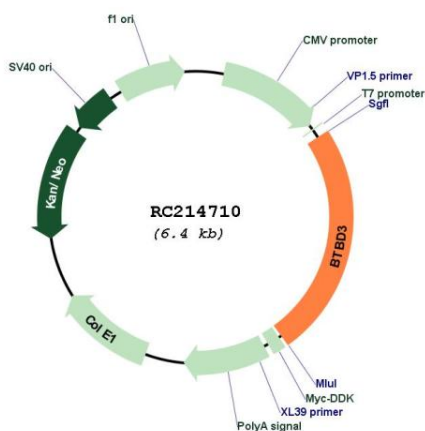
- Reconstitution Method:**
1. Centrifuge at 5,000xg for 5min.
 2. Carefully open the tube and add 100ul of sterile water to dissolve the DNA.
 3. Close the tube and incubate for 10 minutes at room temperature.
 4. Briefly vortex the tube and then do a quick spin (less than 5000xg) to concentrate the liquid at the bottom.
 5. Store the suspended plasmid at -20°C. The DNA is stable for at least one year from date of shipping when stored at -20°C.

RefSeq: [NM_014962.4](#)

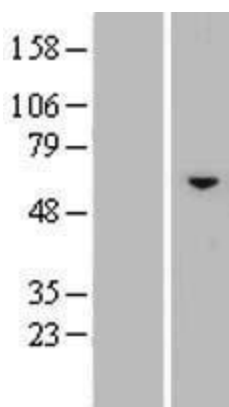
RefSeq Size: 4857 bp
 RefSeq ORF: 1569 bp
 Locus ID: 22903
 UniProt ID: [Q9Y2F9](#)
 Cytogenetics: 20p12.2
 Domains: BTB
 MW: 58.2 kDa

Gene Summary: Acts as a key regulator of dendritic field orientation during development of sensory cortex. Also directs dendrites toward active axon terminals when ectopically expressed (By similarity). [UniProtKB/Swiss-Prot Function]

Product images:



Circular map for RC214710



Western blot validation of overexpression lysate (Cat# [LY414891]) using anti-DDK antibody (Cat# [TA50011-100]). Left: Cell lysates from untransfected HEK293T cells; Right: Cell lysates from HEK293T cells transfected with RC214710 using transfection reagent MegaTran 2.0 (Cat# [TT210002]).