

Product datasheet for RC214696

CLEC16A (NM_015226) Human Tagged ORF Clone

Product data:

Product Type:	Expression Plasmids
Product Name:	CLEC16A (NM_015226) Human Tagged ORF Clone
Tag:	Myc-DDK
Symbol:	CLEC16A
Synonyms:	Gop-1; KIAA0350
Mammalian Cell Selection:	Neomycin
Vector:	pCMV6-Entry (PS100001)
E. coli Selection:	Kanamycin (25 ug/mL)
ORF Nucleotide Sequence:	>RC214696 representing NM_015226 Red=Cloning site Blue=ORF Green=Tags(s)

TTTTGTAATACGACTCACTATAGGGCGGCCGGAATTCGTCGACTGGATCCGGTACCGAGGAGATCTGCC
GCC**CGATCGCC**

ATGTTTGGCCGCTCGCGGAGCTGGGTGGGCGGGGCCATGGCAAGACTTCCCGCAACATCCACTCCTTGG
ACCACCTCAAGTATCTGTACCACGTTTTGACCAAAAACACCACAGTCACAGAACAGAACCGGAACCTGCT
AGTGGAGACCATCCGTTCCATCACTGAGATCCTGATCTGGGGAGATCAAATGACAGCTCTGATTTGAC
TTCTTCTGGAGAAGAATATGTTTGTCTTCTTGAACATCTTGCAGCAAAAGTCGGGCCGTTATGTGT
GCGTTCAGCTGCTGCAGACCTTGAACATCCTCTTGAACATCAGTCACGAGACCTCACTTTATTATTT
GCTCTCAAATAACTACGTAATTCATCATCGTTCATAAATTTGACTTTTCTGATGAGGAGATTATGGCC
TATTATATATCGTTCCTGAAAACACTTTCGTTAAAACCAACAACCACACTGTCCATTTCTTTATAATG
AGCACACCAATGACTTTGCCCTGTACACAGAAGCCATCAAGTTTTTCAACCACCTGAAAGCATGGTTAG
AATTGCTGAAGAACCATAACTTTGAATGTCTATAAAGTGGAATAACCAGGCCATGCTGCACTACATCCGA
GATAAACTGCTGTTCTTACTTCTCAATTTGGTCTGGTTCATTGGGAGCCATGTGATCGAACTCGATG
ACTGCGTGCAGACTGATGAGGAGCATCGGAATCGGGTAACTGAGTGATCTGGTGGCAGAGCACCTAGA
CCACCTGCACTATCTCAATGACATCCTGATCATCAACTGTGAGTTCCTCAACGATGTGCTCACTGACCAC
CTGCTCAACAGGCTCTTCTGCCCCTCTACGTGTACTCACTGGAGAACCAGGACAAGGGAGGAGAACGGC
CGAAAATTAGCCTGCGGTGTCTTTATCTTCTGTCACAGGTCTTCTTAATTATACATCATGCACCGCT
GGTGAACCTCGTTAGCTGAAGTCATTCTGAATGGTATCTGTCTGAGATGTACGCTAAGACTGAACAGGAT
ATTCAGAGAAGTTCTGCCAAGCCAGCATTCTGGTCTTCAATAAACCACCGAGACTCGAGCGGTCCC
TTGAGATGAACAAGCACAAAGGGCAAGAGGCGGGTGCAAAAAGAGACCCAACTACAAAAACGTTGGGGAAGA
AGAAGATGAGGAGAAAGGGCCACCGAGGATGCCAAGAAGACCGCGAGAAGGCTAAAGGTACAGAGGGT
GGTTCAAAGGCATCAAGACGAGTGGGGAGAGTGAAGAGATCGAGATGGTATCATGGAGCGTAGCAAGC
TCTCAGAGCTGGCCGCCAGCACCTCCGTGCAGGAGCAGAACACCACGGACGAGGAGAAAAGCGCCCGCC
CACCTGCTCTGAGAGCACGCAATGGAGCAGACCCTTCTGGATATGGTGTACCACGCGCTGGACAGCCCG



GATGATGATTACCATGCCTGTTTCGTGCTCTGCCTCCTCTATGCCATGTCTCATAATAAAGGCATGGATC
 CTGAAAAATTAGAGCGAATCCAGCTCCCGTGCCAAATGCGGCCGAGAAGACCACCTACAACCACCCGCT
 AGCTGAAAGACTCATCAGGATCATGAACAACGCTGCCAGCCAGATGGGAAGATCCGGCTGGCGACGCTG
 GAGCTGAGCTGCCTGTTCTGAAGCAGCAAGTCTGATGAGTGTGGCTGCATCATGAAGGACGTGCACC
 TGGCCTGCCTGGAGGGTGCAGAGAAGAAAGTGTTCACCTGTACGACATTTTTATAAGGGAGAAGACAT
 TTTTTGGACATGTTTGAAGATGAGTATAGGAGCATGACAATGAAGCCCATGAACGTGGAATATCTCATG
 ATGGACGCCTCCATCCTGCTGCCCAACAGGCACGCCACTGACGGGCATTGACTTCGTGAAGCGGCTGC
 CGTGTGGCGATGTGGAGAAGACCCGCGGGCCATCCGGGTGTTCTTCATGCTGCGTTCCTGTCACTGCA
 ATTGCGAGGGGAGCCTGAGACACAGTTGCCGCTGACTCGGGAGGAGACCTGATCAAGACTGATGATGTC
 CTGGATCTGAATAACAGCGACTTGATTGCATGTACAGTATCACCAAGGATGGCGCATGGTCCAGCGAT
 TCCTGGCTGTGGATATTTACCAGATGAGTTGGTGGAGCCTGATGTGTCCAGGCTTGGCTGGGGAGTGGT
 CAAGTTTGCAGGCCTATTGCAGGACATGCAGGTGACTGGCGTGGAGGACGACAGCCGTGCCCTGAACATC
 ACCATCCACAAGCCTGCGTCCAGCCCCATTCCAAGCCCTTCCCATCCTCCAGGCCACCTTCATCTTCT
 CAGACCACATCCGCTGCATCATCGCAAGCAGCGCTGGCCAAAGGCCGATCCAGGCAAGGCGCATGAA
 GATGCAGAGAATAGCTGCCCTCCTGGACCTCCCAATCCAGCCCACCACTGAAGTCTGGGGTTTGGACTC
 GGCTCCTCCACCTCCACTCAGCAGCTGCCTTTCGGCTTCTACGACCAGGGGCGCCGGGGCAGCAGCGACC
 CCACAGTGCAGCGCTCCGTGTTTGCATCGTGGACAAGGTGCCAGGCTTCGCCGTGGCCAGTGCATAAA
 CCAGCACAGCTCCCGTCCCTGTCTCACAGTCGCCACCCTCCGCCAGCGGGAGCCCCAGCGGCAGCGGG
 AGCACCAGCCACTGCGACTCTGGAGGCACCAGCTCGTCTCCACCCCTCCACAGCCCAGAGTCCAGCAG
 ATGCCCCATGAGTCCAGAACTGCCTAAGCCTCACCTTCTGACCAGTTGGTAATCGTCAACGAAACGGA
 AGCAGACTCTAAGCCCAGCAAGAAGCTGGCCAGGAGCGCAGCCGTGGAGACAGCCAGCCTGTCCCCAGC
 CTCGTCCCTGCCCGCAGCCACCATTTCCTGCTCTGCGAGGACACGGCTGACACGCTGAGCGTGAAT
 CGCTGACCCTTGTCCCCAGTTGACCCCCACAGCCTCCGACGCTCACCGGCATGCCCCGCTGTCCAC
 GCGGCTGCCGCTGCACAGAGCCATGGGCGAAGAGGCTGCATGTGCTGACCTGTGGCACCGCTGAG
 GAC

ACGCGTACGCGGCCGCTCGAGCAGAACTCATCTCAGAAGAGGATCTGGCAGCAATGATATCCTGGATT
 ACAAGGATGACGACGATAAGGTTTAA

Protein Sequence:

>RC214696 representing NM_015226
 Red=Cloning site Green=Tags(s)

MFGRSRSWVGGHGKTSRNIHSLDHLKYLHYVLTKNNTVTEQNRNLLVETIRSITEILIWGDQNDSSVFD
 FFLEKNMFVFFLNILRQKSGRYVCVQLLQTLNILFENISHETSLYYLLSNNYVNSIIVHKFDFDSEIIMA
 YYISFLKTLSLKLNHTVHFFYNEHTNDFALYTEAIKFFNHPESMVRIAVRTITLNVYKVDNQAMLHYIR
 DKTAVPYFVSNLWVFIGSHVIELDDCVQDDEEHRNRGKLSLVAEHLDHLHYLNDILIIINCEFLNDVLDH
 LLNRLFPLVYVYSLNQDKGGERPKISLPVSLYLLSQVFLIIHHAPLVNSLAEVILNGDLSEMYAKTEQD
 IQRSSAKPSIRCFIKPTETLERSLEMNKHGKRRVQKRPNYKNVGEEDDEEKGPTEDAQEDAERKAGTEG
 GSKGIKTSGESEIEMVIMERSKLSLAASTSVQEQNTTDEEKSAATCESTQWSRPFLLDMVYHALDSP
 DDDYHALFVLCLLYAMSHNKGMDEKLERIQLPVPNAEKTYYNHPLAERLIRIMNNAAPQDGKIRLATL
 ELSCLLLKQQVLMASAGIMKDVHLACLEGAREESVHLVRHFYKGEDIFLDMFEDEYRSMTMKPMNVEYLM
 MDASILLPPTGTPLTGIDFVKRLPCGDVEKTRRAIRVFFMLRSLSLQLRGEPELQPLTREEDLIKTDVV
 LDLNNSDLIACTVITKDGGMVQRFLAVDIYQMSLVEPDVSRLLGWGVVVFAGLLQDMQVTGVEDDSRALNI
 TIHKPASSPHSKPFPILQATFIFSDHIRCIIAKQRLAKGRIQARRMKMQRIAALLDLPIQPTTEVLGFLG
 GSSTSTQHLPPRFYDQRRGSSDPTVQRSVFASVDKVPGFVAQCINQHSPPSLSSQSPPSASGSPSGS
 STSHCDSSGTSSSSTPSTAQSPADAPMPELKPPLPDQLVIVNETEADSKPSKNVARSAAVETASLSPS
 LVPARQPTISLLCEDTADTLVSESLTLVPPVDPHSLRSLTGMPPPLSTPAAACTEPMGEEAACAEVGTAE
 D

TRTRPLEQKLI SEEDLAANDILDYKDDDDKV

Restriction Sites:

Sgfl-MluI

Cloning Scheme:


ACCN: NM_015226

ORF Size: 3153 bp

OTI Disclaimer: The molecular sequence of this clone aligns with the gene accession number as a point of reference only. However, individual transcript sequences of the same gene can differ through naturally occurring variations (e.g. polymorphisms), each with its own valid existence. This clone is substantially in agreement with the reference, but a complete review of all prevailing variants is recommended prior to use. [More info](#)

OTI Annotation: This clone was engineered to express the complete ORF with an expression tag. Expression varies depending on the nature of the gene.

Components: The ORF clone is ion-exchange column purified and shipped in a 2D barcoded Matrix tube containing 10ug of transfection-ready, dried plasmid DNA (reconstitute with 100 ul of water).

Reconstitution Method:

1. Centrifuge at 5,000xg for 5min.
2. Carefully open the tube and add 100ul of sterile water to dissolve the DNA.
3. Close the tube and incubate for 10 minutes at room temperature.
4. Briefly vortex the tube and then do a quick spin (less than 5000xg) to concentrate the liquid at the bottom.
5. Store the suspended plasmid at -20°C. The DNA is stable for at least one year from date of shipping when stored at -20°C.

RefSeq: [NM_015226.3](#)

RefSeq Size: 6786 bp

RefSeq ORF: 3162 bp

Locus ID: 23274

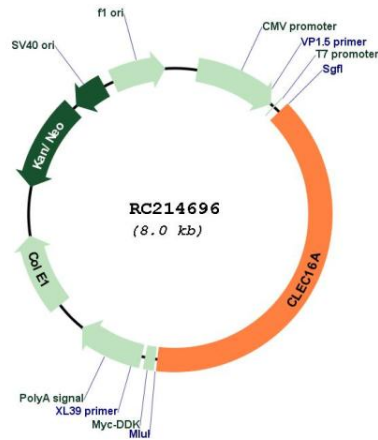
UniProt ID: [Q2KHT3](#)

Cytogenetics: 16p13.13

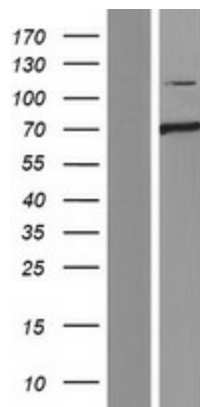
MW: 117.5 kDa

Gene Summary: This gene encodes a member of the C-type lectin domain containing family. Single nucleotide polymorphisms in introns of this gene have been associated with diabetes mellitus, multiple sclerosis and rheumatoid arthritis. Multiple transcript variants encoding different isoforms have been found for this gene. [provided by RefSeq, Aug 2011]

Product images:



Circular map for RC214696



Western blot validation of overexpression lysate (Cat# [LY414698]) using anti-DDK antibody (Cat# [TA50011-100]). Left: Cell lysates from untransfected HEK293T cells; Right: Cell lysates from HEK293T cells transfected with RC214696 using transfection reagent MegaTran 2.0 (Cat# [TT210002]).