

## Product datasheet for RC214695

### C1orf229 (NM\_207401) Human Tagged ORF Clone

#### Product data:

Product Type:	Expression Plasmids
Product Name:	C1orf229 (NM_207401) Human Tagged ORF Clone
Tag:	Myc-DDK
Symbol:	C1orf229
Synonyms:	FLJ45717
Mammalian Cell Selection:	Neomycin
Vector:	pCMV6-Entry (PS100001)
E. coli Selection:	Kanamycin (25 ug/mL)
ORF Nucleotide Sequence:	>RC214695 representing NM_207401 Red=Cloning site Blue=ORF Green=Tags(s)

TTTTGTAATACGACTCACTATAGGGCGGCCGGAATTCGTCGACTGGATCCGGTACCGAGGAGATCTGCC  
GCC**CGATCGCC**

ATGGGCCTGTGCACCCTCCAGCCCCTGGGCCCTCCTCGAAAATCCTCCACATCCTGCGGGACCTGGACCG  
CCAGCGGCCTCCAAGCCTGGGCCATTTGCCCGTCGCTCCGCCTGGCATTGACTTCTTAGAACCGCG  
GGCAGGAGGGCAGCGTGGGGCAGTGGTGGCTGTCAGTCCACGCGGGCCGCCGAGAGGACGCGCCACCC  
CACCTCCAACGCCGTCTCTGCTTCAGCCAGAGCCGTCCCTGACATGGGCCAGGGACGCGGTGCA  
GAGGCCACTTCCGGTCACTCCCCGCTGCGGCCCTCGCGCTCCGGGAGCCGACCCTCCGCTGCGCCAGCTC  
CGACCGCAGTCTTCGGGAGCAGAAGCAGCGCCGCGGGGCCCTGACCCACACCCCTCCCGCGCCTCCG  
CCTGCAGGACCCCGCCCTCCCGGGCTCGCTGGGTCCCTCCGCCCGGCCGCTCCCGCACCGCGCGCG  
GTGCTACGAGCTCCAAGGCGGCAGCAAGACGGTCCCGCCAAGCGGCGGTGGGTGCGACCCAC  
CACGGGCCCGGCACCGCGGGGAGGGCGCGCTCCTAGGCTGCGGGAGCGGACGGACCCCTCCGACTTCG  
GCCACCTGGCGCCGCGCTCCTCCCGCCGAAGTCCCTCCCGGGCAGCCGCCCAAATTTCCGGAGC  
GGGAGCGACTG

**ACGCGT**ACGCGGCCGCTCGAGCAGAACTCATCTCAGAAGAGGATCTGGCAGCAAATGATATCCTGGATT  
ACAAGGATGACGACGATAAGGTTTAA



[View online »](#)

**Protein Sequence:** >RC214695 representing NM\_207401  
 Red=Cloning site Green=Tags(s)

MGLCTLQPLGPPRKSSTSCGTWTASGLPSLGHLPRRLRLAFDFLEPRARGQRGGSGGCQSTRAAERTRPP  
 HPPNAVLLLQPEPSL TWAQGRGCRGHFRSLPAAASRSGSRTLRCASSDRSLREQKQRAGPDPTPSPAPP  
 PAGPRPSPGSLGPSAAPRTARGAYELQGGASQDGPQAAVGATPTTGPGTGGEGALLCGSGRTPPTS  
 ATWRRRLLPAEVPPGAAAANFPERERL

TRTRPLEQKLISEEDLAANDILDYKDDDDKV

**Chromatograms:** [https://cdn.origene.com/chromatograms/mk8030\\_d11.zip](https://cdn.origene.com/chromatograms/mk8030_d11.zip)

**Restriction Sites:** SgfI-MluI

**Cloning Scheme:**



**ACCN:** NM\_207401

**ORF Size:** 711 bp

**OTI Disclaimer:** The molecular sequence of this clone aligns with the gene accession number as a point of reference only. However, individual transcript sequences of the same gene can differ through naturally occurring variations (e.g. polymorphisms), each with its own valid existence. This clone is substantially in agreement with the reference, but a complete review of all prevailing variants is recommended prior to use. [More info](#)

**OTI Annotation:** This clone was engineered to express the complete ORF with an expression tag. Expression varies depending on the nature of the gene.

**Components:** The ORF clone is ion-exchange column purified and shipped in a 2D barcoded Matrix tube containing 10ug of transfection-ready, dried plasmid DNA (reconstitute with 100 ul of water).

- Reconstitution Method:**
1. Centrifuge at 5,000xg for 5min.
  2. Carefully open the tube and add 100ul of sterile water to dissolve the DNA.
  3. Close the tube and incubate for 10 minutes at room temperature.
  4. Briefly vortex the tube and then do a quick spin (less than 5000xg) to concentrate the liquid at the bottom.
  5. Store the suspended plasmid at -20°C. The DNA is stable for at least one year from date of shipping when stored at -20°C.

**RefSeq:** [NM\\_207401.2](#), [NP\\_997284.1](#)

**RefSeq Size:** 2258 bp

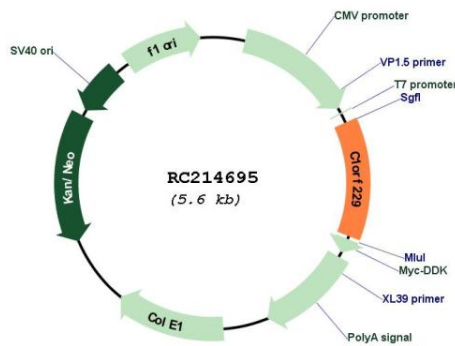
**RefSeq ORF:** 714 bp

**Locus ID:** 388759

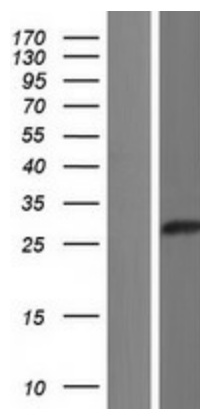
**Cytogenetics:** 1q44

**MW:** 24.2 kDa

**Product images:**



Circular map for RC214695



Western blot validation of overexpression lysate (Cat# [LY404009]) using anti-DDK antibody (Cat# [TA50011-100]). Left: Cell lysates from untransfected HEK293T cells; Right: Cell lysates from HEK293T cells transfected with RC214695 using transfection reagent MegaTran 2.0 (Cat# [TT210002]).